

Influence of Admission Glucose Level on Long-Term Prognosis in Patients With Acute Coronary Syndrome

Stella M. Macín, Eduardo R. Perna, María L. Coronel, Jorge O. Kriskovich, Pablo A. Bayol, Valeria A. Franciosi, Jorge L. Riera-Stival, Bilda González-Arjol, and Jorge R. Badaracco

Unidad de Cuidados Intensivos Coronarios, Instituto de Cardiología Juana F. Cabral, Corrientes, Argentina

Introduction and objectives. Hyperglycemia can increase the risk of death or a poor outcome following myocardial infarction. Our objective was to investigate the value of the admission glucose level in predicting long-term outcome in patients with acute coronary syndrome.

Methods. The study population comprised 565 patients admitted with acute coronary syndrome within 24 hours of the start of symptoms. The final diagnosis was myocardial infarction in 56% and unstable angina in 44%.

Results. The patients' mean glucose level was 143 (77) mg/dL. During follow-up (42 [6] months), 55 (9.7%) patients died. The area under the receiver operating characteristic curve for the optimum cut point for predicting death from the glucose level was 0.67; the cut point was 128 mg/dL, with a sensitivity of 85% and a specificity of 62%. Patients were divided into 2 groups according to blood glucose level: in group 1 (36.8%), it was ≥ 128 mg/dL; in group 2, < 128 mg/dL. There were differences between the groups in the incidence of diabetes (47.2% vs 12.6%; $P < .001$), systolic blood pressure (138 [33] mm Hg vs 133 [33] mm Hg; $P < .001$), and ejection fraction (48.3 [0.9]% vs 55.2 [12.4]%; $P = .004$). At 4 years, the survival rates were 40% and 77% in groups 1 and 2, respectively (log rank test $P < .001$). The following were independent predictors of mortality: admission glucose level ≥ 128 mg/dL (hazard ratio [HR] = 2.41; $P = .021$), admission systolic blood pressure (HR = 0.97; $P < .001$), admission troponin-T level (HR = 4.88; $P < .001$), and the development of heart failure (HR = 1.04; $P = .001$). A rise of 10 mg/dL in glucose level was associated with a 2.56-fold increase in the risk of death ($P = .012$).

Conclusions. In patients with acute coronary syndrome, hyperglycemia at admission (cut point ≥ 128 mg/dL) was associated with increased long-term risk and, in addition, was a strong independent predictor of mortality.

Key words: Acute coronary syndrome. Glycemia. Hyperglycemia. Prognosis.

Influencia de la concentración de glucemia en el momento del ingreso en la evolución a largo plazo de los pacientes con síndrome coronario agudo

Introducción y objetivos. La hiperglucemia puede incrementar el riesgo de muerte y evolución adversa después del infarto. Analizamos el valor pronóstico a largo plazo de la concentración de glucemia en el momento del ingreso en pacientes con síndrome coronario agudo (SCA).

Métodos. La población estaba constituida por 565 pacientes hospitalizados con SCA dentro de las 24 h siguientes al inicio de los síntomas. El diagnóstico fue infarto agudo de miocardio en el 56% y angina inestable en el 44%.

Resultados. La glucemia media fue de 143 ± 77 mg/dl. Durante el seguimiento (42 ± 6 meses) se registraron 55 muertes (9,7%). El área bajo la curva ROC para determinar el mejor punto de corte de glucemia en la predicción de muerte fue 0,67; el punto de corte de 128 mg/dl mostró una sensibilidad del 85% y una especificidad del 62%. Los pacientes fueron clasificados en grupo 1 (glucemia ≥ 128 mg/dl), con un 36,8%, o grupo 2 (glucemia < 128 mg/dl). Ambos grupos difirieron en la diabetes (el 47,2 frente al 12,6%; $p < 0,001$), la presión arterial sistólica ($138,3 \pm 33$ frente a 133 ± 33 mmHg; $p < 0,001$) y la fracción de eyección ($48,3 \pm 0,9$ frente a $55,2 \pm 12,4$ %; $p = 0,004$). La supervivencia a 4 años fue del 40 y el 77% en los grupos 1 y 2, respectivamente (test de rangos logarítmicos; $p < 0,001$). En el momento del ingreso, un valor de glucemia ≥ 128 mg/dl (hazard ratio [HR] = 2,41; $p = 0,021$), la presión arterial sistólica (HR = 0,97; $p < 0,001$), la troponina T (HR = 4,88; $p < 0,001$) y el desarrollo de insuficiencia cardíaca (HR = 1,04; $p = 0,001$) fueron predictores independientes de mortalidad. Un incremento de 10 mg en la glucemia supuso un aumento del riesgo de muerte de 2,56 ($p = 0,012$).

Conclusiones. En pacientes con síndrome coronario agudo, la hiperglucemia en el momento del ingreso, con un punto de corte ≥ 128 mg/dl, se asoció con un mayor riesgo a largo plazo y fue, además, un fuerte predictor independiente.

Palabras clave: Síndrome coronario agudo. Glucemia. Hiperglucemia. Pronóstico.

Correspondence: Dra. S.M. Macín.
Unidad de Cuidados Intensivos Coronarios.
Instituto de Cardiología Juana F. Cabral.
Bolívar, 1334. 3400 Corrientes. Argentina.
E-mail: stellam@gigared.com or macinucic@hotmail.com

Manuscript received January 5, 2006.
Accepted for publication September 14, 2006.

ABBREVIATIONS

CK-MB: creatine kinase MB isoenzyme
 HR: hazard ratio
 CI: confidence interval
 ACEI: angiotensin converting enzyme inhibitors

INTRODUCTION

Hyperglycemia may be observed at admission in patients with acute myocardial infarction, independently of prior history of diabetes, and is associated with an increase in mortality.^{1,2} The increased mortality may be explained by larger infarct size and a higher rate of heart failure and cardiogenic shock in that population.³⁻⁵

In some patients, elevated glucose levels may simply be a marker of preexisting but as yet undetected disease, type 2 diabetes or glucose intolerance,⁶ leading to an increase in lipolysis and an excess of circulating free fatty acids, more severe myocardial damage, and even more severe coronary disease.^{5,7-10}

Little is known about the role of hyperglycemia at admission in patients with acute coronary syndrome, since only a few studies have analyzed this marker in the population of patients with non-ST-segment elevation myocardial infarction and unstable angina, and in those that have, the follow-up period has been limited. Even less is known in Latin American populations, as diagnosis of infarction is often delayed and glucose levels may be just another simple marker in this situation. This study addressed the hypothesis that patients with acute coronary syndrome and increased glucose levels show worse long-term outcome.

The aim of the study was to analyze the long-term prognostic value of glucose concentration at admission in patients with acute coronary syndrome.

METHODS**Population**

A prospective observational study was performed in a population of 565 consecutive patients admitted between December 1997 and December 2001 to the Coronary Care Unit of the Instituto de Cardiología, Corrientes, Argentina, with a diagnosis of acute coronary syndrome within 24 hours of the onset of symptoms.

Inclusion Criteria

1. Acute coronary syndrome, defined as typical precordial pain for at least 20 minutes along with the presence of 1 or more of the following conditions: new or presumably new ST-segment deviation, altered enzyme levels (creatinine kinase MB isoenzyme [CK-MB] level

above the reference limit in 2 or more samples obtained within a period of more than 6 hours and/or troponin T \geq 0.02 ng/mL).

2. Acute myocardial infarction, defined as the presence of at least 2 of the following 3 conditions: *a*) appearance of new Q waves, *b*) CK-MB levels above the reference limit, and *c*) precordial pain lasting at least 30 minutes. According to the above criteria, the remaining patients were considered to have unstable angina.

Exclusion Criteria

Admission more than 24 hours after onset of symptoms, cardiogenic shock, acute pulmonary edema, suspected myocarditis, pulmonary thromboembolism, congenital disease, dilated cardiomyopathy, cardiac hypertrophy, valve disease or pericardial disease, and difficulty in completion of follow-up.

Study Protocol

The study protocol was approved by the Department of Research and Teaching of our institution. Patients were informed regarding inclusion in the study and provided signed consent.

All patients were admitted to the coronary care unit, where a full medical history was taken along with a physical examination, 12-lead electrocardiogram (ECG) at admission and 2 hours after reperfusion therapy in those patients in whom ST-segment elevation was observed, chest radiograph at admission and 24 hours later, analysis of enzyme concentrations (CK, CK-MB) at admission, 2 hours after admission or reperfusion therapy, at 6, 12, and 24 hours, and then every 24 hours until enzyme concentrations returned to normal, and concentrations of troponin T as a marker of myocardial necrosis at admission.

Final diagnosis was acute myocardial infarction (AMI) in 56% of patients (n=317) and unstable angina in 44% (n=248).

Definitions

– Hyperglycemia: The population was split into 2 groups according to the cut point obtained from the receiver operating characteristics (ROC) curve to predict mortality. Group 1 and group 2 contained patients with glucose concentrations of \geq 128 mg/dL, and $<$ 128 mg/dL, respectively.

– Diabetes: presence of fasting glucose concentrations $>$ 126 mg/dL, diagnosed prior to admission.

– Q-wave infarction: defined after 24 hours according to the presence of new Q waves in the V1-V3 leads or the development of Q waves \geq 0.03 seconds in leads I, II, aVL, aVF, V4, V5, and V6.¹¹

– Non-Q-wave infarction: considered in the absence of new Q waves in the ECG 24 hours after admission. It

should be noted that the old definition of infarction was used.

– Heart failure: defined by the presence of typical symptoms, rales, S3 gallop, and evidence of pulmonary congestion in the chest radiograph (flow redistribution, interstitial edema, and/or alveolar edema), necessitating the use of intravenous diuretics, vasodilators, and/or inotropic drugs.

– Mortality: all-cause death was calculated at the end of follow-up.

Follow-Up and Endpoints

The follow-up period lasted until 6 months after inclusion of the last patient. Follow-up was performed using hospital medical records and patients were assessed in the ischemic heart disease clinic (82%) or by their cardiologist (13%); the remaining 5% were contacted by telephone or through their primary care physician. The mean follow-up period was 42 (9) months.

Hospital Treatment

Following admission, most patients received oral aspirin (100-325 mg/day). Patients with ST-segment elevation admitted in the 12 hours following onset of symptoms were treated by primary angioplasty or with thrombolytic drugs. Intravenous nitroglycerin was administered in 92% of patients and, in the absence of contraindications, intravenous or oral β -blockers and angiotensin converting enzyme inhibitors (ACEI) were also prescribed.

Statistical Analysis

A ROC curve was constructed to determine the best cut point for glucose concentration in the prediction of death during follow-up; using this method, hyperglycemia was classified as a glucose concentration ≥ 128 mg/dL. The characteristics of the patients with glucose levels greater than or equal to and below the cutoff were compared by χ^2 test for qualitative variables and the results were expressed as percentages. Quantitative variables were expressed as means (SD) and analyzed using the Student *t* test for normally distributed variables and the Mann-Whitney U test for variables that were not normally distributed. Two Cox proportional hazards models were constructed to identify independent predictors of mortality during follow-up. The following variables, which were significant in the univariate analysis, were included in both models: male sex, systolic blood pressure, heart rate, and troponin-T level at admission, diagnosis of infarction, and heart failure during hospital stay, and in addition, glucose concentration was included as a qualitative variable with a cutoff of ≥ 128 mg/dL (model 1) and as a quantitative variable with increments of 10

mg/dL (model 2). Differences were considered statistically significant when $P < .05$. Kaplan-Meier survival analysis was applied and log-rank tests were used to compare curves. Analysis was performed using the statistical package SPSS 10.0 for Windows (SPSS Inc, Chicago, Illinois, USA). Eleven patients were lost to follow-up.

RESULTS

Patient Characteristics

The general characteristics of the study population are shown in Table 1. The mean glucose level at admission was 143 (77) mg/dL. A ROC curve was constructed to determine the best cut point for prediction of mortality during follow-up. The area under the curve was 0.67 (95% confidence interval [CI], 0.60-0.75) (Figure 1). A total of 208 patients (36.8%) had glucose levels ≥ 128 mg/dL at admission (group 1); the remaining patients made up group 2.

The mean age was similar in both groups (63.1 [11.5] vs 61.2 [12.5] years, $P = .76$). Among the demographic characteristics of the patients at admission, a higher proportion of diabetes and hypertension, and a larger number of women were found in group 1 (Table 1).

When clinical characteristics were analyzed, it was observed that group 1 had more hypertension and tachycardia at admission, with a larger number of affected coronary vessels, higher concentrations of markers of myocardial necrosis, and a lower left ventricular ejection fraction (Tables 2 and 3).

Treatment

In this series of patients included in the 24 hours following onset of symptoms, reperfusion therapy with thrombolytic drugs was used to a similar extent in both groups. However, there was greater use of primary angioplasty in patients with infarction in the

TABLE 1. Demographic Characteristics of Patients With Glucose Levels ≥ 128 mg/dL or < 128 mg/dL*

Variable	Glucose Level ≥ 128 mg/dL (Group 1)	Glucose Level < 128 mg/dL (Group 2)	P
Patients	208 (36.8%)	357 (63.2%)	–
Age, mean (SD), y	63.1 (11.5)	61.2 (12.5)	.76
Men	168 (80.7%)	182 (50.9%)	.008
Hypertension	196 (94.2%)	208 (58.2%)	$< .001$
Dyslipidemia	88 (42.3%)	116 (32.4%)	.42
Diabetes	117 (56.2%)	40 (11.2%)	$< .001$
Smoking	85 (40.8%)	107 (29.9%)	.48
Previous myocardial infarction	69 (33.1%)	74 (20.7%)	.13

*Data are shown as number (%) unless otherwise indicated.

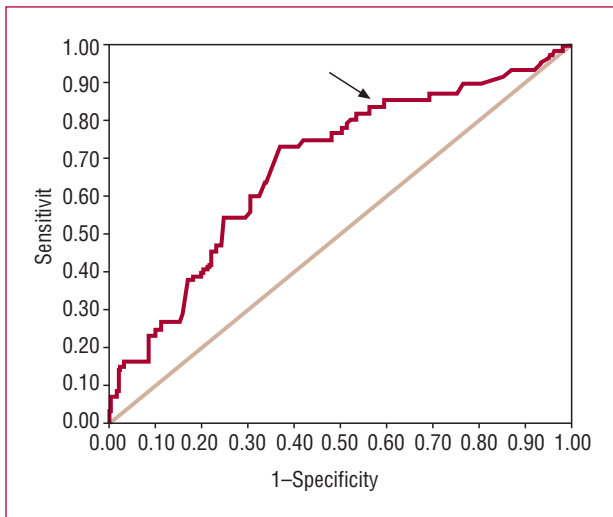


Figure 1. Receiver operating characteristic (ROC) curve for prediction of death at 4-year follow-up. ROC curve for glucose level (area below the curve, 0.67; 95% confidence interval, 0.60-0.75); cut point, 128 mg/dL; sensitivity, 85%; specificity, 62%.

TABLE 2. Clinical Characteristics of Patients With Glucose Levels ≥ 128 mg/dL or < 128 mg/dL*

Variable	Glucose Level ≥ 128 mg/dL (Group 1)	Glucose Level < 128 mg/dL (Group 2)	P (95% CI)
Systolic blood pressure, mm Hg	138.3 (33)	133 (19)	.001
Heart rate, beats/min	78 (21)	76 (15)	<.001
Glucose level, mg/dL	197 (0.88)	99 (15)	<.001
Urea, mg/dL	97 (19)	39 (16)	.011
Creatinine, mg/dL	1.58 (0.92)	1.28 (0.86)	.01
Diagnosis of infarction, n (%)	133 (55.4%)	107 (44.6%)	<.001
Number of affected vessels by angiography	2.10 (0.90)	1.75 (1.0)	.001
LVEF, %	48.32 (0.9)	55.22 (12.4)	.002

*Data are shown as means (SD), except where otherwise indicated. LVEF: left ventricular ejection fraction.

TABLE 3. Markers of Myocardial Necrosis in Patients With Acute Myocardial Infarction and Unstable Angina in Groups 1 and 2*

Variable	Glucose Level ≥ 128 mg/dL (Group 1)	Glucose Level < 128 mg/dL (Group 2)	P
CK-MB max, U/L	647.7 (788.6)	354.9 (500)	.016
CK max, U/L	1107.3 (1806.9)	389.2 (757)	.020
Troponin T in infarction, ng/mL	2.25 (4.5)	1.02 (1.57)	<.0001
Troponin T in angina, ng/mL	0.060 (0.20)	0.041 (0.096)	<.0001

*Data are shown as means (SD). CK: creatine kinase; CK-MB: creatine kinase MB isoenzyme.

TABLE 4. Treatment in Both Groups

Variable	Glucose Level ≥ 128 mg/dL (Group 1)	Glucose Level < 128 mg/dL (Group 2)	P*
ACEI	164 (66.1%)	164 (51.7%)	<.001
Diuretics	10 (4%)	12 (3.8%)	.52
β -blockers	147 (59.3%)	223 (70.3%)	.004
Aspirin	231 (93.1%)	296 (93.4%)	.51
Clopidogrel	30 (14.4%)	59 (22.9%)	.22
Heparin	125 (50.7%)	148 (46.7%)	.21
Statins	32 (12%)	53 (16.7%)	.12
Myocardial revascularization in ST-segment elevation infarctions	11 (4.4%)	13 (4.1%)	.50
Thrombolytics	32 (24%)	53 (33.4%)	.12
Primary angioplasty	86 (34.6%)	72 (22.8%)	.028

*Data are shown as number (%). ACEI: angiotensin converting enzyme inhibitors.

hyperglycemic group. The patients in group 1 were more often prescribed ACEI, while β -blockers were used more often in group 2 (Table 4).

Predictors of Mortality and Analysis of Survival

Mortality during follow-up was 9.7%. Mortality was 3 times higher in patients with glucose levels ≥ 128 mg/dL (16.1% vs 4.7%; $P < .0001$). Heart failure was developed during the period of hospital admission in 12.7% of the population, with a higher proportion in group 1 (21.4% vs 6%, $P < .001$) (Table 5).

The following variables were independent predictors of mortality at admission (Table 6, model 1): a glucose level ≥ 128 mg/dL (hazard ratio [HR], 2.41; 95% CI, 1.11-5.10), systolic blood pressure (HR, 0.97; 95% CI, 0.96-0.99), troponin T (HR, 4.88; 95% CI, 2.66-8.97), and development of heart failure (HR, 1.04; 95% CI, 1.01-1.06). A 10-mg increase in glucose level was associated with an increase in the risk of death of 2.56 (95% CI, 1.12-5.32) (Table 6, model 2).

The actuarial survival at 4 years was 40% and 77% in groups 1 and 2, respectively (log-rank tests, $P < .001$) (Figure 2). Follow-up was completed in 98% of patients, with a mean period of 42 (6) months.

DISCUSSION

In this study, undertaken in an unselected population of patients with acute coronary syndrome admitted to hospital in the 24 hours following the onset of symptoms, glucose levels ≥ 128 mg/dL, present in more than a third of the population, were associated with an independent increase in the risk of long-term mortality.

TABLE 5. Events During Hospital Stay and Follow-Up*

Variable	Total in Population	Glucose Level ≥ 128 mg/dL (Group 1)	Glucose Level < 128 mg/dL (Group 2)	P
Death during follow-up	55 (9.7%)	40 (16.1%)	15 (4.7%)	$<.0001$
Heart failure during hospital stay	72 (12.7%)	53 (21.4%)	19 (6%)	$<.001$

*Data are shown as number (%).

TABLE 6. Predictors of Death in Cox Proportional Hazards Model*

Variables	Univariate P	P	Model 1 1 HR (95% CI)	P	Model 2 HR (95% CI)
Men, yes/no	$<.008$.23	0.233 (0.85-1.23)	.44 (0.78-1.56)	0.291
Blood pressure at admission, mm Hg	$<.0001$	$<.001$	0.978 (0.967-0.990)	$<.001$	0.976 (0.963-0.988)
Diagnosis of infarction, yes/no	$<.001$.52	0.485 (0.74-2.85)	.64	0.574 (0.61-1.85)
Heart rate at admission, beats/min	.004	.09	0.547 (0.78-2.14)	.12	0.358 (0.79-1.95)
TnTc at admission, ng/dL	.012	$<.001$	4.887 (2.660-8.979)	$<.001$	4.471 (2.412-8.288)
Glucose level at admission ≥ 128 mg/dL, yes/no	$<.0001$.021	2.416 (1.114-5.100)		
Glucose level at admission, increments of 10 mg/dL	$<.0001$.012	2.563 (1.123-5.328)
Heart failure during hospital stay, yes/no	$<.001$.001	1.040 (1.016-1.065)	$<.001$	3.379 (1.776-6.429)

HR: hazard ratio; CI: confidence interval; TnTc: cardiac troponin T.

*Model 1 included glucose level as a qualitative variable (≥ 128 mg/dL at admission) while model 2 included it as a quantitative variable (increments of 10 mg/dL).

Hyperglycemia and Stress

It is known that stress during acute infarction can lead to increased glucose levels in the first few hours.^{4,5} Excessive secretion of catecholamines causes, in addition to signs and symptoms, an increase in cardiac oxygen consumption due to the release of fatty acids. This favors glycogen breakdown and contributes to an increase in glucose levels that, in association with increased concentrations of glucagon and cortisol, leads to a reduction in glucose tolerance and reduced myocardial contractility. These changes are associated with a greater incidence of deleterious effects such as no-reflow phenomenon^{3,12,13} and heart failure during the period of hospital admission.⁵ Stress hyperglycemia may be an indicator of more extensive myocardial damage, which would be reflected in increased concentrations of markers of myocardial necrosis, with or without more extensive coronary disease^{14,15} and worse prognosis.¹⁶⁻²⁰ The results of this study confirm those findings, given the observed increase in the level of those markers.

Hyperglycemia as a Predictor of Mortality

In this study, we observed that hyperglycemia at admission was associated with a 2.41-fold increase in the risk of mortality in patients with acute coronary syndrome. Most studies have been undertaken in populations of patients with acute ST-segment elevation myocardial infarction, in whom an increase in mortality has been demonstrated along with the development of heart failure, cardiogenic shock, and arrhythmias.^{5,9}

However, this unselected patient series also included non-ST-segment elevation infarctions and high-risk unstable angina. Elevated glucose concentrations have been independently associated with negative outcome.^{5,20-24} In a previous study, we observed that for each gram per liter increase in the glucose level there was a 1.7-fold increase in the risk of death during follow-up in patients with acute infarction.¹¹ Another interesting observation in this study was that while 27.8% of the total population had a history of diabetes, the definition proposed for hyperglycemia at admission allowed detection of 36.8% of cases, almost 10% higher in the overall population. Nowadays, it is known that recent onset diabetes represents a high risk and that its presence is associated with similar risk to that of previous infarction.²⁵

Patients with hyperglycemia more often suffer heart failure during the period of hospital admission, reflecting greater impairment of the cardiac muscle, a lower ejection fraction, increased release of markers of myocardial necrosis, and more severe coronary disease.^{26,27} We believe that it is important to have access to an appropriate parameter for the identification of left ventricular dysfunction at the time of presentation of acute coronary syndrome, as well as for the detection of potentially reversible myocardial dysfunction that may benefit from revascularization; this may facilitate the earliest possible initiation of treatment to prevent remodeling.²⁸

An increased troponin level at admission was shown to be a prognostic marker in patients with or without ST-segment elevation. A metaanalysis of 7 clinical trials and

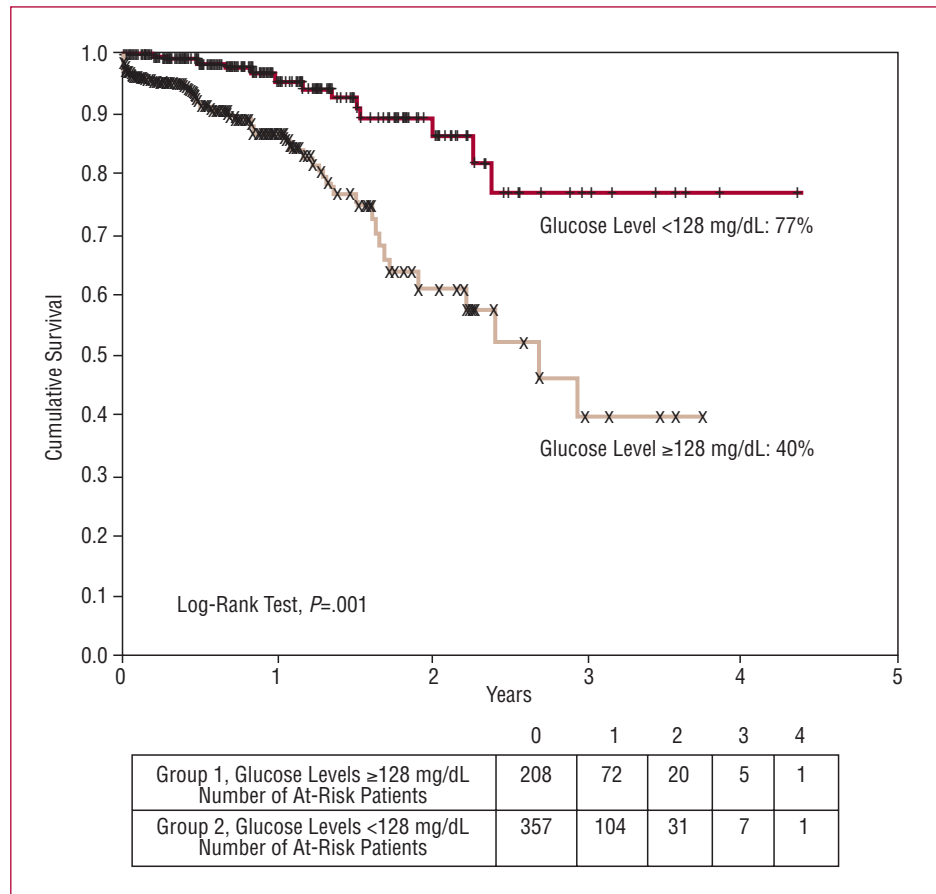


Figure 2. Kaplan-Meier survival curves for groups 1 and 2.

19 cohort studies showed that patients with positive results for troponin had higher mortality, with a 3-fold to 8-fold increase in the risk of death.²⁹ In patients with ST-segment elevation, increased troponin levels at admission have been associated with increased mortality, as well as with greater development of heart failure and cardiogenic shock at 30-day follow-up.³⁰ The increased mortality may be simply a function of the longer duration of symptoms, the presence of prior silent ischemic events that caused troponin release, or greater myocardial vulnerability.³¹ In our study, elevated troponin T at admission was a much better prognostic marker than hyperglycemia, with more than 4 times the risk of death during follow-up for every nanogram increase per deciliter.

Hypotension at admission was also a prognostic marker: for each 1 mm Hg reduction in blood pressure the risk increased by 2.2%.

Other studies have shown that hyperglycemia is an indicator of worse long-term outcome.^{6,7} Bolk et al⁴ reported an overall mortality of 19.3% at 1-year follow-up in an unselected population of 336 consecutive patients with AMI, and that rate increased to 44% in patients with glucose levels greater than 11.1 mmol/L. In our study, patients with glucose levels ≥ 128 mg/dL showed worse survival at 4-year follow-up (40% compared with 77%) and if we look carefully at the survival curves we see

that they separate initially during the period of hospitalization and that the divergence is more marked after 18 months. This finding indicates that elevated glucose levels at admission allow selection of a group of patients at high clinical risk.

Limitations

Despite showing data from the “real world,” the study does not provide information on the treatment provided during hospital stay in patients with hyperglycemia. In addition, glucose level was not monitored periodically during hospital stay. The inclusion of acute coronary syndromes up to 24 hours following onset of symptoms may encompass various initial therapeutic strategies, which may influence long-term prognosis.

Clinical Implications

The results of this study show that in patients with acute coronary syndromes hyperglycemia (cut point, ≥ 128 mg/dL) allows identification of a group of individuals at high risk of adverse events during follow-up and lower survival at 4 years. The clinical usefulness of these findings should be complemented with the implementation of a diet low in carbohydrates, provision

of insulin during the acute event,³²⁻³⁶ as shown in the DIGAMI study,³² and with the use of antithrombotic drugs such as clopidogrel and statins, and invasive strategies such as primary angioplasty, and early revascularization for unstable angina, or non-Q-wave infarction.³⁷⁻⁴⁰

It is important to remember that through this simple method, available in any hospital, it is possible to identify at-risk individuals at admission, allowing the best strategies possible to be offered or for the patient to be referred to another hospital.

Other possible changes in the future would consist of early recognition of hyperglycemia and the application of dietary measures and insulin treatment,^{41,42} since optimization of treatment for diabetes and glucose intolerance could improve cardioprotection and reduce morbidity and mortality in these syndromes.¹³

CONCLUSIONS

In patients with acute coronary syndrome, hyperglycemia at admission (cut point ≥ 128 mg/dL) is associated with an increase in long-term risk that, in addition, is a strong independent predictor.

REFERENCES

- Klamann A, Sarfert P, Schulte G, Launhardt V, Schemiegel W, Nauck MA. Myocardial infarction in diabetic versus non-diabetic subjects: relation of survival and infarct size following therapy with sulfonylurea (glibenclamide). *Eur Heart J*. 2000;21:220-9.
- Meier JJ, Deifuss S, Klamann A, Launhardt V, Schmiegel WH, Nauck MA. Plasma glucose at hospital admission and previous metabolic control determine myocardial infarct size and survival in patients with and without type 2 diabetes. *Diabetes Care*. 2005;28:2551-3.
- Iwakura K, Ito H, Ikushima M, Kawano S, Okamura A, Asano K, et al. Association between hyperglycemia and the no reflow phenomenon in patients with acute myocardial infarction. *J Am Coll Cardiol*. 2003;41:1-7.
- Bolk J, van der Ploeg T, Coronel JH, Arnold AE, Sepers J, Uman VA. Impaired glucose metabolism predicts mortality after a myocardial infarction. *Int J Cardiol*. 2001;79:207-14.
- Capes S, Hunt D, Malmberg K, Gerstein H. Stress hyperglycaemia and increased risk of death after myocardial infarction in patients with and without diabetes: a systematic overview. *Lancet*. 2000;355:773-8.
- Ceriello A. Acute hyperglycaemia: a "new" risk factor during myocardial infarction. *Eur Heart J*. 2005;26:328-31.
- Nazneen N, Cowden E, Pearce N, Gardner M, Merry H, Cox J. Is blood glucose an independent predictor of mortality in acute myocardial infarction in the thrombolytic era? *J Am Coll Cardiol*. 2002;40:1748-54.
- Kosiborod M, Rathore S, Inzucchi S, Masoudi F, Wang Y, Havranek E. Admission glucose and mortality in elderly patients hospitalized with acute myocardial infarction. *Circulation*. 2005;111:3078-86.
- Suleiman M, Hammerman H, Boulous M, Kapeliovich M, Suleiman A, Agmon Y, et al. Fasting glucose is an important independent risk factor for 30 day mortality in patients with acute myocardial infarction. *Circulation*. 2005;111:754-60.
- Depre C, Vanoverschelde JL, Taegtmeyer H. Glucose for the heart. *Circulation*. 1999;99:578-88.
- Macín SM, Perna ER, Augier N, Cialzeta J, Farías EF, Fontana M, et al. Características clínicas y evolución a largo plazo de pacientes con insuficiencia cardiaca como complicación del infarto agudo de miocardio. *Rev Esp Cardiol*. 2005;58:789-96.
- Lopaschuk G, Stanley W. Glucose metabolism in the ischemic heart. *Circulation*. 1997;95:313-5.
- Taegtmeyer H, McNulty P, Young M. Adaptation and maladaptation of the heart in diabetes: Part I. General concepts. *Circulation*. 2002;105:1727-33.
- Monteiro P, Goncalves L, Providencia LA. Diabetes and cardiovascular disease: the road to cardioprotection. *Heart*. 2005;91:1621-5.
- Bartnik M, Malmberg K, Ryden L. Managing heart disease diabetes and the heart: compromised myocardial function-a common challenge. *Eur Heart J*. 2003;5 Suppl B:33-41.
- Bolk J, van der Ploeg T, Cornel J, Arnold A, Sepers J, Umans V. Impaired glucose metabolism predicts mortality after a myocardial infarction. *Int J Cardiol*. 2001;79:207-14.
- Williams S, Goldfine A, Timimi F, Ting H, Roddy M, Simonson D, et al. Acute hyperglycemia attenuates endothelium-dependent vasodilation in humans in vivo. *Circulation*. 1998;97:1695-701.
- Wahab NN, Cowden EA, Pearce NJ, Gardner MJ, Merry H, Cox JL. On behalf of the ICONS Investigators. *J Am Coll Cardiol*. 2002;40:1748-54.
- Stentz F, Umpierrez G, Cuervo R, Kitabchi A. Proinflammatory cytokines, markers of cardiovascular risks, oxidative stress, and lipid peroxidation in patients with hyperglycemic crises. *Diabetes*. 2004;53:2079-86.
- Chaudhuri A, Janicke D, Wilson M, Tripathy D, Garg R, Bandyopadhyay A, et al. Anti-inflammatory and profibrinolytic effect of insulin in acute ST segment elevation myocardial infarction. *Circulation*. 2004;109:849-54.
- Norhammar A, Tenerz A, Nilsson G, Hamsten A, Efendic S, Ryden L, et al. Glucose metabolism in patients with acute myocardial infarction and no previous diagnosis of diabetes mellitus: a prospective study. *Lancet*. 2002;359:2140-4.
- Marfella R, Siniscalchi M, Esposito K, Sellitto A, de Fanis U, Romano C, et al. Effects of stress hyperglycemia on acute myocardial infarction. *Diabetes Care*. 2003;26:3129-35.
- Jagasia D, Whiting J, Concato J, Pfau S, McNulty P. Effect of non-insulin-dependent diabetes mellitus on myocardial insulin responsiveness in patients with ischemic heart disease. *Circulation*. 2001;103:1734-9.
- Wahab NN, Cowden EA, Pearce NJ, Gardner MJ, Merry H, Cox JL, and ICONS Investigators. Is blood glucose an independent predictor of mortality in acute myocardial infarction in the thrombolytic era? *J Am Coll Cardiol*. 2002;40:1748-54.
- Pajunen P, Koukkunen H, Ketonen M, Jerkkola T, Immonen-Raiha P, Karja-Koskenkari J, et al. Myocardial infarction in diabetic and non-diabetic persons with and without prior myocardial infarction: the FINAMI Study. *Diabetologia* 2005;48:2519-24.
- Wu A, Parsons L, Every N, Bates E. Hospital outcome in patients presenting with congestive heart failure complicating acute myocardial infarction. A report from the Second National Registry of Myocardial Infarction (NRMI-2). *J Am Coll Cardiol*. 2002;40:1389-94.
- Hellermann JP, Jacobsen SJ, Gersh BJ, Rodeheffer RJ, Reeder GS, Roger VL. Heart failure after myocardial infarction: a review. *Am J Med*. 2002;113:324-30.
- Dargie H. Heart failure post-myocardial infarction: a review of issues. *Heart*. 2005;91 Suppl II:3-6
- Heidenreich PA, Alloggiamento T, Melsop K, McDonald KM, Go A, Hlatky MA. The prognostic value of troponin in patients with non-ST elevation acute coronary syndromes: a meta-analysis. *J Am Coll Cardiol*. 2001;38:478-85.
- Magnus Ohman E, Armstrong PW, White HD, Granger CHB, Wilcox RG, Douglas Weaver W, et al. Risk stratification with a point of care cardiac troponin T test in acute myocardial infarction. *Am J Cardiol*. 1999;84:1281-6.
- Bueno, H. Prevención y tratamiento de la cardiopatía isquémica en pacientes con diabetes mellitus. *Rev Esp Cardiol*. 2002;55:975-86.

32. Malmberg K, Ryden L, Efendic S, Herlitz J, Nicol P, Waldenstrom A, et al. Randomized trial of insulin-glucose infusion followed by subcutaneous insulin treatment in diabetic patients with acute myocardial infarction (DIGAMI study): effects on mortality at 1 year. *J Am Coll Cardiol*. 1995;26:57-65.
33. Mehta SR, Yusuf S, Díaz R, Zhu J, Pais, Xavier D, et al. Effect of glucose-insulin-potassium infusion on mortality in patients with acute ST-segment elevation myocardial infarction: The CREATE-ECIA Randomized Controlled Trial. *JAMA*. 2005;293:437-46.
34. Wang P, Chatman J. Onset of diabetes in Zucker diabetic fatty (ZDF) rats leads to improved recovery of function after ischemia in the isolated perfused heart. *Am J Physiol Endocrinol Metabolism*. 2004;286:E725-36.
35. van der Horst I, Zijlstra F, van't Hof A, Doggen C, de Boer M, Suryapranata H, et al. Glucose-insulin-potassium infusion in patients treated with primary angioplasty for acute myocardial infarction. *J Am Coll Cardiol*. 2003;42:784-91.
36. Bloomgarden Z. Inpatient diabetes control. *Diabetes Care*. 2004;27:2272-7.
37. Giuliano R, Branunwald E. The year in non-ST-Segment elevation acute coronary syndromes. *J Am Coll Cardiol*. 2005;46:906-19.
38. Schwartz GG, Olsson AG. The case for intensive statin therapy after acute coronary syndromes. *Am J Cardiol*. 2005;96:45F-53F.
39. de Winter R, Windhausen F, Coronel JH, Dunselman PHJM, Janus CH, Bendermacher PEF, et al. Early invasive versus selectively invasive management for acute coronary syndromes. *N Engl J Med*. 2005;353:1095-104.
40. Chen ZM, Pan HC, Chen YP, Peto R, Collins R, Jiang LX, et al. COMMIT (Clopidogrel and metoprolol in myocardial infarction trial) collaborative group. Early intravenous then oral metoprolol in 45852 patients with acute myocardial infarction: randomized placebo-controlled trial. *Lancet*. 2005;366:1622-32.
41. Zamora A, Marrugat J. Pronóstico de los pacientes diabéticos con cardiopatía isquémica. *Rev Esp Cardiol*. 2002;55:751-62.
42. Jiménez-Navarro M, Curiel E, Hernández García J, Briales J, Domínguez Franco A, Gómez Doblaz J, et al. Influencia de la diabetes mellitus en los resultados clínicos tras revascularización coronaria percutánea. *Rev Esp Cardiol*. 2002;55:365-71.