

## Original article

## Cardioprotective Effect of Ranolazine in the Process of Ischemia-reperfusion in Adult Rat Cardiomyocytes

Eva M. Calderón-Sánchez,<sup>a</sup> Alejandro Domínguez-Rodríguez,<sup>a,b</sup> José López-Haldón,<sup>c</sup> Manuel F. Jiménez-Navarro,<sup>d</sup> Ana M. Gómez,<sup>b</sup> Tarik Smani,<sup>a</sup> and Antonio Ordóñez<sup>a,c,\*</sup><sup>a</sup> Grupo de Fisiopatología Cardiovascular, Instituto de Biomedicina de Sevilla (IBIS), Hospital Universitario Virgen del Rocío/CSIC/Universidad de Sevilla, Sevilla, Spain<sup>b</sup> Inserm, Labex Lermite, Université Paris Sud, Chatenay-Malabry, France<sup>c</sup> Unidad de Imagen Cardiovascular, Área del Corazón, Hospital Universitario Virgen del Rocío, Sevilla, Spain<sup>d</sup> UGC del Corazón, Instituto de Biomedicina de Málaga (IBIMA), Hospital Clínico Universitario Virgen de la Victoria, Universidad de Málaga, RIC (Red de Investigación Cardiovascular), Málaga, Spain

## Article history:

Received 21 November 2014

Accepted 27 February 2015

Available online 14 July 2015

## Keywords:

Ischemia-reperfusion

Cardioprotection

Ca<sup>2+</sup>

Ranolazine

## ABSTRACT

**Introduction and objectives:** Ranolazine is used as a complementary treatment for angina in symptomatic patients who are inadequately controlled with first-line antianginal therapies. Ranolazine inhibits sodium voltage-dependent channels, suggesting their possible involvement in the reperfusion process by preventing the sodium and calcium overload that occurs during ischemia. In this study, we characterized the effect of ranolazine on calcium homeostasis in isolated adult cardiac myocytes from rats subjected to a simulated ischemia and reperfusion protocol.

**Methods:** The effects of ranolazine on changes in intracellular calcium concentration were evaluated at different times using field electrostimulation. The study of intracellular calcium was performed using microfluorimetry with the fluorescent indicator, Fura-2, and by confocal microscopy with the indicator, Fluo-3.

**Results:** We found that cardiomyocytes subjected to ischemia-reperfusion showed an increase in the diastolic calcium concentration and a decrease in the amplitude of intracellular calcium transients. The application of ranolazine during ischemia significantly improved intracellular calcium handling, preventing intracellular calcium overload, decreasing the diastolic calcium concentration, increasing the sarcoplasmic reticulum calcium load, and preserving the amplitude of the intracellular calcium transient, which was reflected by successful recovery in the process of excitation-contraction coupling during reperfusion. However, these effects of ranolazine did not occur when it was applied during reperfusion or when applied in both ischemia and reperfusion.

**Conclusions:** Ranolazine shows beneficial effects in cardiomyocytes exposed to ischemia/reperfusion but only when applied during ischemia. This effect is achieved through its improvement of calcium handling during ischemia.

© 2015 Sociedad Española de Cardiología. Published by Elsevier España, S.L.U. All rights reserved.

## Efecto cardioprotector de la ranolazina en el proceso de isquemia-reperusión en cardiomiocitos de rata adultos

## RESUMEN

**Introducción y objetivos:** La ranolazina se emplea como tratamiento complementario de la angina en pacientes sintomáticos insuficientemente controlados con los tratamientos antianginosos de primera línea. La ranolazina inhibe los canales de sodio operados por voltaje, lo cual indica su posible intervención en el proceso de reperusión al prevenir la sobrecarga de sodio y calcio que se produce durante la isquemia. En este estudio, se ha caracterizado el efecto de la ranolazina en la homeostasis del calcio en miocitos cardíacos adultos de ratas a las que se aplicó un protocolo de isquemia y reperusión simuladas.

**Métodos:** Se evaluaron los efectos de la ranolazina en los cambios de la concentración de calcio intracelular en diferentes momentos empleando electroestimulación de campo. El estudio del calcio intracelular se llevó a cabo mediante microfluorimetría utilizando el indicador fluorescente Fura-2 y por microscopía confocal utilizando el indicador Fluo-3.

**Resultados:** Se observó que los cardiomiocitos a los que se aplicaba la isquemia-reperusión mostraban un aumento de la concentración de calcio diastólica y una disminución de la amplitud de los transitorios de calcio intracelular. La aplicación de la ranolazina durante la isquemia mejoró significativamente la regulación del calcio evitando la sobrecarga de calcio intracelular, reduciendo la concentración de calcio

## Palabras clave:

Isquemia-reperusión

Cardioprotección

Ca<sup>2+</sup>

Ranolazina

\* Corresponding author: Instituto de Biomedicina de Sevilla, Hospital Universitario Virgen del Rocío, Avenida Manuel Siurot s/n, 41013 Sevilla, Spain.  
E-mail addresses: antorfernan@us.es, tasmani@us.es (A. Ordóñez).

diastólica, aumentando la carga de calcio en el retículo sarcoplásmico y preservando la amplitud del transitorio de calcio intracelular, lo cual se reflejaba en una recuperación satisfactoria en el proceso de acoplamiento de excitación-contracción durante la reperfusión. Sin embargo, estos efectos de la ranolazina no se produjeron cuando el fármaco se aplicó solo durante la reperfusión o cuando se aplicó tanto en la isquemia como en la reperfusión.

**Conclusiones:** La ranolazina muestra unos efectos favorables en los cardiomiocitos expuestos a isquemia-reperfusión, pero solo cuando se aplica durante la isquemia. Este efecto se alcanza mejorando la regulación del calcio durante la isquemia.

© 2015 Sociedad Española de Cardiología. Publicado por Elsevier España, S.L.U. Todos los derechos reservados.

## Abbreviations

I/R: ischemia/reperfusion  
 $I_{NaL}$ : late  $Na^+$  current  
 NCX:  $Na^+/Ca^{2+}$  exchanger

## INTRODUCTION

Ischemic heart disease is the leading cause of death in the western world.<sup>1</sup> The most devastating expression of this disease is ST-segment elevation myocardial infarction, which is due to acute coronary artery occlusion known to cause ischemic myocardial cell death. After ST-segment elevation myocardial infarction, rapid myocardial reperfusion by thrombolytic therapy or primary percutaneous coronary intervention is the most effective strategy to reduce myocardial infarct size and thus improve clinical outcome.<sup>2</sup> Reperfusion therapy has a substantial impact on early mortality after ST-segment elevation myocardial infarction. However, a high percentage (20% to 30%) of patients develops adverse remodeling in our hospital.<sup>3</sup> Early and effective reperfusion limits the extent of myocardial necrosis by reducing the incidence of left ventricular remodeling and dysfunction, but even with the best reperfusion therapy, paradoxically, a proportion of cardiomyocytes dies due to restoration of blood flow.<sup>4</sup> This phenomenon is called ischemia/reperfusion (I/R) injury.<sup>5</sup>

Oxygen deprivation and calcium overload during cardiac ischemia and reactive oxygen species production during reperfusion cause cardiomyocyte death by necrosis and apoptosis.<sup>6</sup> The major adverse changes that occur in the ischemic myocardium consist of an increase of intracellular  $Na^+$  concentration due to failure of the sarcolemma  $Na^+/K^+$  pump in the absence of energy and acidification of cytosol by anaerobic glycolysis. The cell attempts to solve this intracellular  $Na^+$  increase through the  $Na^+/Ca^{2+}$  exchanger (NCX) acting in the reverse mode, extruding  $Na^+$  and introducing  $Ca^{2+}$  inside the cells. This leads to an intracellular  $Ca^{2+}$  overload and a mishandling of  $Ca^{2+}$  by the cells.<sup>7</sup>

Ranolazine is a piperazine derivative with a novel mechanism of action that was first approved by the Food and Drug Administration in 2006 for the symptomatic treatment of patients with chronic angina. Due to its pharmacological properties, it is able to block the late  $Na^+$  current ( $I_{NaL}$ ) in cardiomyocytes and steer the oxidation of fatty acids toward glucose oxidation, making oxygen use more efficient in the heart.<sup>8,9</sup> However, the mechanism of action of ranolazine is not yet precisely known. The beneficial effects of ranolazine reside in its action of reducing the  $Na^+$  influx into myocardial cells through  $Na^+$  channels, which in pathologic situations fail during their inactivation or else they open again.<sup>10</sup> Ranolazine has also been suggested to decrease calcium overload in myocardial cells during ischemia by blocking the  $I_{NaL}$  current.<sup>9</sup>

At therapeutic plasma concentrations ( $\leq 10$ – $21$  mmol/L), ranolazine selectively inhibits  $I_{NaL}$ , reduces intracellular accumulation of  $Na^+$  and subsequent  $Na^+$ -induced  $Ca^{2+}$  overload, as well as mechanical, electrical, and metabolic abnormalities in ischemic or insufficient myocardium.<sup>11</sup> However, at this concentration, ranolazine does not alter the peak of  $Na^+$  current responsible for step 0 of the action potential, the input current of  $Ca^{2+}$ , or the activity of NCX and  $Na^+/H^+$  exchanger.<sup>12</sup>

Nowadays, the use of ranolazine has been approved as an adjunctive therapy for symptomatic angina in patients who are inadequately controlled with first-line antianginal therapies.<sup>12</sup> The development of a substance capable of inhibiting or reducing the deleterious effects of a pathological increase in intracellular  $Ca^{2+}$  concentration in cardiomyocytes during ischemia processes would be a hugely important clinical and therapeutic contribution. In this study, we hypothesized that ranolazine might have a novel action in reperfusion procedures, preventing the  $Na^+$  and  $Ca^{2+}$  overload that occurs in ischemic hearts and helping cells to improve  $Ca^{2+}$  handling at reperfusion.

## METHODS

Animals were handled in accordance with the recommendations of the Royal Decree 53/2013 in agreement with Directive 2010/63/EU of the European Parliament. The study was approved by the local Ethics Committee on Human Research of the Virgen del Rocío University Hospital of Seville and the Animal Research Committee of the University of Seville.

### Isolation of Ventricular Myocytes

We used adult male Wistar rats weighing approximately 250 g to 350 g, which were previously heparinized (4 IU/g intraperitoneally) and anesthetized by intraperitoneal administration of sodium thiopental (1 mL/250 g). The heart was quickly removed and mounted on a Langendorff perfusion system with a constant flow. Ventricular myocytes were isolated by perfusion using type II collagenase (251 IU/mL, Worthington Biochemical; Lakewood, New Jersey, United States).<sup>13</sup> Cardiomyocytes were maintained in the Tyrode solution (mM): 140 NaCl, 4 KCl, 1.1  $MgCl_2$ , 10 HEPES, 10 glucose, 1.8  $CaCl_2$  (pH 7.4), supplemented with 1.8 mM  $CaCl_2$ . All experiments were conducted on rod-shaped cells at room temperature (24 °C to 26 °C).

### Intracellular $Ca^{2+}$ Measurement With Microfluorimetry

Intracellular  $Ca^{2+}$  transients were recorded using the imaging system Incyt high speed Im2 (Intracellular Imaging Inc.; Imsol, United Kingdom) in freshly isolated cardiomyocytes loaded with the fluorescence  $Ca^{2+}$  dye, Fura-2AM. During experiments, cells

were continuously superfused with normal Tyrode (mM) or with simulated ischemia (mM): 140 NaCl, 3.6 KCl, 1.2 MgCl<sub>2</sub>, 1.8 CaCl<sub>2</sub>, 20 HEPES, 20 Lactate-Na and 2 NaCN (pH 6.22). To evoke intracellular Ca<sup>2+</sup> transients, cardiomyocytes were field stimulated throughout the experiment at 0.5 Hz using 2 parallel platinum electrodes, as previously described.<sup>14</sup>

### Intracellular Ca<sup>2+</sup> Measurement With Confocal Microscopy

Confocal microscopy experiments were performed in freshly isolated cardiomyocytes loaded with Fluo-3AM. Images were obtained with confocal microscopy (Leica TCS SP2 AOBS, objective W.I. 63 × and N.A. 1.2) by scanning the cell with an Argon laser every 1.54 ms. To evoke intracellular Ca<sup>2+</sup> transients, the cardiomyocytes were field stimulated at 0.5 Hz, as previously described.<sup>14</sup> The sarcoplasmic reticulum Ca<sup>2+</sup> load was estimated by rapid caffeine application in Fluo-3-loaded cardiomyocytes using the Leica SP5, objective 40 × W.I., N.A. 1.2, scanning in the line scan mode at 700 Hz, with a white light laser at 500 nm. In both cases, emission was collected at > 510 nm, as previously described.<sup>14,15</sup>

### Treatment Protocols

Group 1: ischemia/reperfusion (I/R). After stabilization with control solution, cells were exposed to simulated ischemia by the perfusion of ischemic solution for 6 minutes, followed by 10 minutes of reperfusion with control solution.

Group 2: ranolazine applied at the onset of reperfusion (I/R+Ran). Cells were exposed to 6 minutes of simulated ischemia and 10 min of reperfusion with the control solution containing 10 μM of ranolazine.

Group 3: ranolazine applied at ischemia and during reperfusion (I+Ran/R+Ran). Cells were exposed to 6 minutes of simulated ischemia in the presence of 10 μM of ranolazine followed by 10 minutes of reperfusion with control solution containing 10 μM of ranolazine.

Group 4: ranolazine applied only during ischemia (I+Ran/R). Cells were exposed to 6 minutes of simulated ischemia with 10 μM of ranolazine followed by 10 minutes of reperfusion with control solution.

Using these protocols, 50% to 60% of cardiomyocytes subjected to I/R protocol showed a significant hypercontraction compared with control cells.

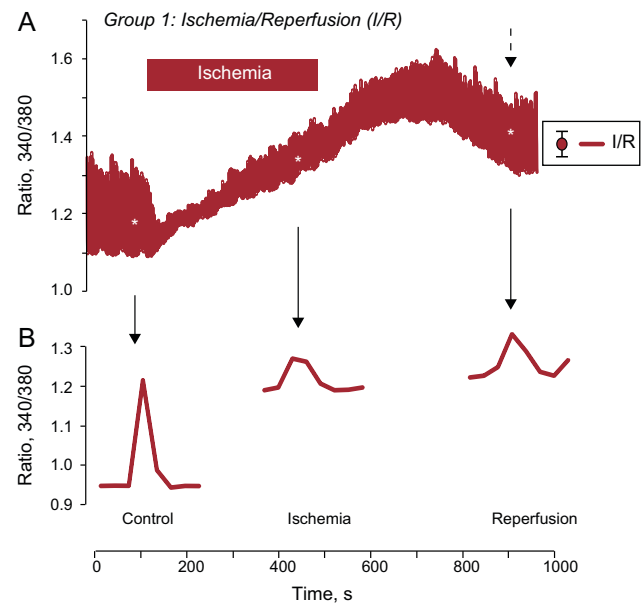
### Data Analysis

Group data are presented as mean ± (standard error of the mean). The single or paired Student's *t* test was used to determine the statistical significance of the data. The significance between multiple groups was evaluated using analysis of variance followed by the Tukey test. Results with a *P*-value < .05 were considered significant. Drugs were purchased from Sigma–Aldrich.

## RESULTS

### Intracellular Ca<sup>2+</sup> Changes During Ischemia-reperfusion

Changes in intracellular Ca<sup>2+</sup> were examined in cardiomyocytes subjected to I/R that were field stimulated at 0.5 Hz. Ischemia induced a significant decrease in the amplitude of intracellular Ca<sup>2+</sup> transients that was partially recovered after reperfusion (Figure 1A). This effect was accompanied by an increase in diastolic



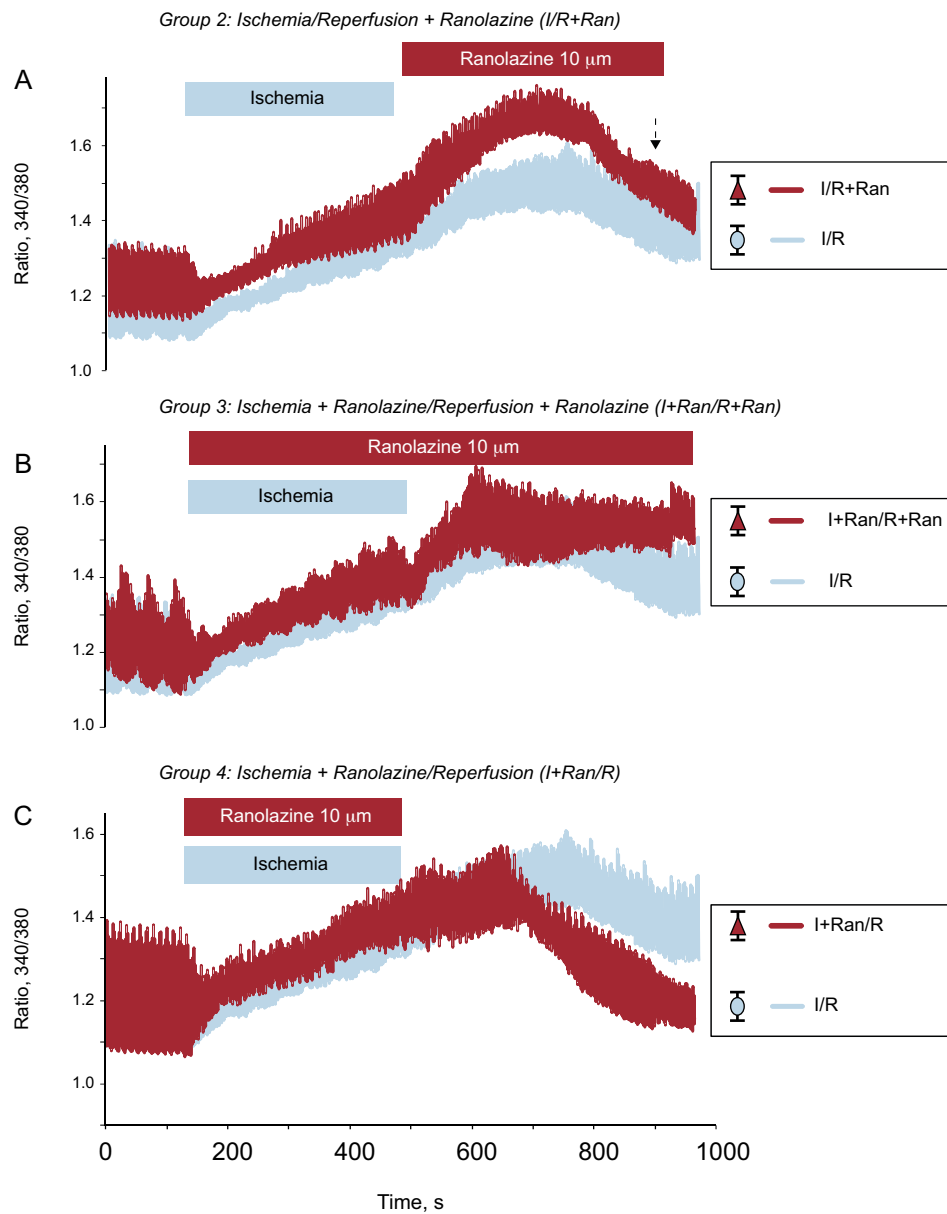
**Figure 1.** Effect of ischemia-reperfusion on intracellular Ca<sup>2+</sup> transients. A: shows the mean trace of changes in intracellular Ca<sup>2+</sup> transients from several isolated adult cardiomyocytes loaded with the fluorescent indicator, Fura-2AM, and subjected to a protocol of simulated I/R. The cells were stimulated at a frequency of 0.5 Hz. B: shows a representative individual [Ca<sup>2+</sup>]<sub>i</sub> transient recorded in control solution, during ischemia, and after cell reperfusion. I/R: ischemia/reperfusion. The dashed arrow indicates the standard error of the mean, which is shown on the right in Figure A. \* *P* < .05.

intracellular Ca<sup>2+</sup> level during ischemia and during early reperfusion and was not restored at the end of reperfusion (Figure 1B). As depicted, intracellular Ca<sup>2+</sup> baseline levels were stable in the control situation, but continued to increase during simulated ischemia, impeding the recovery of Ca<sup>2+</sup> transient at reperfusion.

### Ranolazine Modulates Intracellular Ca<sup>2+</sup> During Ischemia-reperfusion

To check the effect of ranolazine on intracellular Ca<sup>2+</sup> handling, we first sought to determine the appropriate timing of its application. To do this, isolated adult cardiomyocytes were subjected to a protocol of I/R in which the drug was applied in 3 stages: a) at the time of reperfusion; b) during I/R, and c) during ischemia only. First, we applied ranolazine (10 μM) at the onset of reperfusion as a treatment suitable for clinic applications during primary angioplasty and therefore cardiac cells were subjected to simulated ischemia for 6 minutes and were then exposed to 10 minutes of reperfusion with a control solution containing 1.8 mM CaCl<sub>2</sub> and 10 μM ranolazine (Figure 2A). Using this protocol, we observed no improvement in the change of intracellular Ca<sup>2+</sup>. Moreover, the increase of diastolic intracellular Ca<sup>2+</sup> caused by ischemia further increased with the application of the drug at the time of reperfusion.

Next, to determine whether ranolazine had a greater protective effect when applied during I/R, cardiomyocytes were treated with a solution of simulated ischemia supplemented with 10 μM ranolazine for 6 minutes and were then reperused with control solution also supplemented with ranolazine for 10 minutes. As a result of this experiment, we observed a progressive and sustained increase in diastolic intracellular Ca<sup>2+</sup> that did not improve at any time during reperfusion (Figure 2B). Finally, adult cardiomyocytes were subjected to 6 minutes of simulated ischemia solution containing 10 μM ranolazine, followed by 10 min of reperfusion in the absence of the drug. The increase in diastolic intracellular



**Figure 2.** Effect of ranolazine applied in different experimental groups. Traces show the time course of changes in the mean intracellular  $\text{Ca}^{2+}$  transients recorded in cardiomyocytes subjected to I/R (blue traces;  $n = 59$ ) and in cells treated with ranolazine applied at different times (red traces). A: ranolazine ( $10 \mu\text{M}$ ) was applied at the onset of reperfusion ( $n = 16$ ). B: ranolazine ( $10 \mu\text{M}$ ) was added during ischemia and reperfusion ( $n = 24$ ). C: ranolazine ( $10 \mu\text{M}$ ) was applied during ischemia only ( $n = 31$ ). I+Ran/R, ischemia + ranolazine/reperfusion; I+Ran/R+Ran, ischemia + ranolazine/reperfusion + ranolazine; I/R, ischemia/reperfusion; IR+Ran, ischemia-reperfusion + ranolazine. The dashed arrow indicates the standard error of the mean, shown on the right.

$\text{Ca}^{2+}$  generated during ischemia decreased significantly at reperfusion with the control solution (Figure 2C). After application of ranolazine during simulated ischemia only, the intracellular  $\text{Ca}^{2+}$  transient significantly improved at reperfusion in cardiac cells compared with the other protocols (Figure 3). Indeed, the  $\text{Ca}^{2+}$  overload generated by ischemia was significantly reduced during reperfusion in this group. In addition, the intracellular  $\text{Ca}^{2+}$  transient amplitude recovered significantly during reperfusion without ranolazine (Figure 3B).

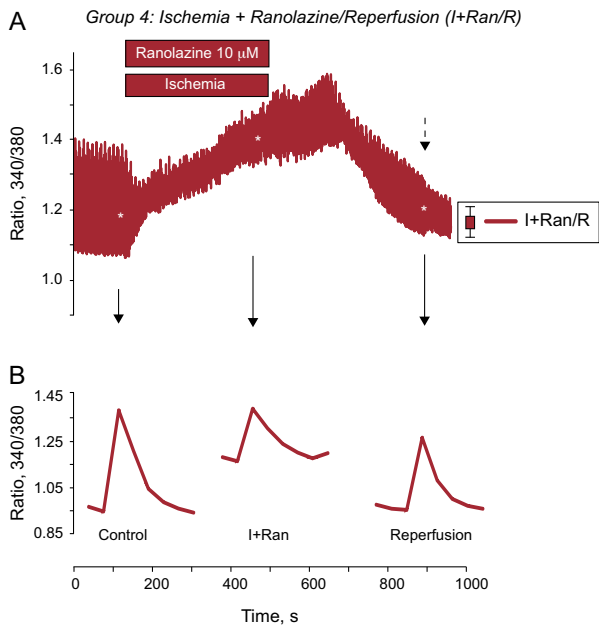
#### Ranolazine Prevents Intracellular $\text{Ca}^{2+}$ Overload by Decreasing Diastolic Intracellular $\text{Ca}^{2+}$ in Ischemic Cardiomyocytes

A detailed analysis of diastolic intracellular  $\text{Ca}^{2+}$  showed that it increased progressively, was higher in the I/R group, and did not recover initial values at reperfusion. Meanwhile, the addition of

ranolazine to the ischemic solution produced a similar intracellular  $\text{Ca}^{2+}$  increase during ischemia, but in this case it was restored to preischemic values at reperfusion without ranolazine (Figure 4A). Treating the cells with ranolazine during ischemia restored the systolic increase of intracellular  $\text{Ca}^{2+}$  to levels similar to preischemic values (Figure 4B). Diastolic intracellular  $\text{Ca}^{2+}$  decreased during reperfusion in the I+Ran/R group ( $105.86\% \pm 3.07\%$ ) and was significantly lower than in the I/R group ( $116.65\% \pm 1.83\%$ ) (Figure 4C).

#### Ranolazine Improves $[\text{Ca}^{2+}]_i$ Transient Amplitude in Cardiomyocytes Submitted to Ischemia-reperfusion. Records With Confocal Microscopy

To gain greater insight into the cardiomyocyte contraction process, we repeated the experiments by confocal imaging using



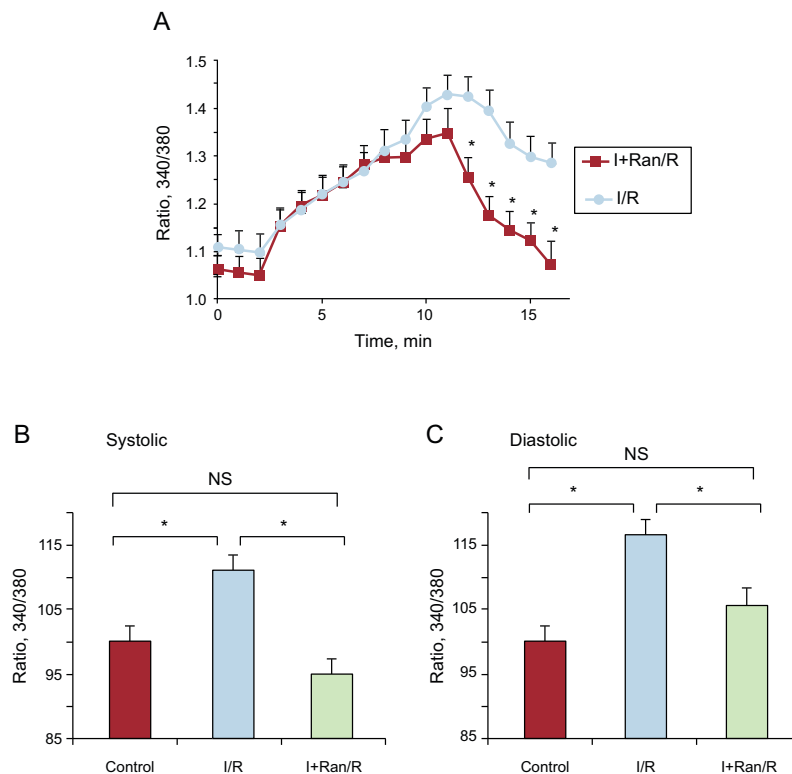
**Figure 3.** Ranolazine addition during ischemia restored the amplitude of intracellular  $[Ca^{2+}]$  transients. A: traces show the mean for recording of intracellular  $Ca^{2+}$  transients in cardiomyocytes treated with ranolazine applied during ischemia (grey). B: representative recording of an individual intracellular  $Ca^{2+}$  transient showing significant recovery at reperfusion. The dashed arrow indicates the standard error of the mean, shown on the right. I+Ran, ischemia + ranolazine; I+Ran/R, ischemia + ranolazine/reperfusion. \*  $P < .05$ .

the line scan model.<sup>14</sup> By scanning the long axis of the cardiomyocytes, the “rigor” of the cells can be followed as the contractures during diastole. First, we analyzed intracellular  $Ca^{2+}$  transients, which confirmed the results of  $Ca^{2+}$  measurements with microfluorimetry (Figure 5). We observed a marked recovery of intracellular  $[Ca^{2+}]$  transients after submission of cardiomyocytes to the I/R protocol, using ranolazine (10  $\mu$ M) during ischemia and removing it at the beginning of reperfusion (Figure 5A). The bar graph in Figure 5B indicates a significant decrease of the amplitudes of intracellular  $[Ca^{2+}]$  transients that recovered partially during reperfusion. Meanwhile, Figure 5C shows a significant recovery in the amplitude of the intracellular  $[Ca^{2+}]$  transients corresponding to the I+Ran/R protocol. Figure 5C also shows that the amplitude of intracellular  $[Ca^{2+}]$  transients during ischemia was maintained in the presence of ranolazine but not in its absence.

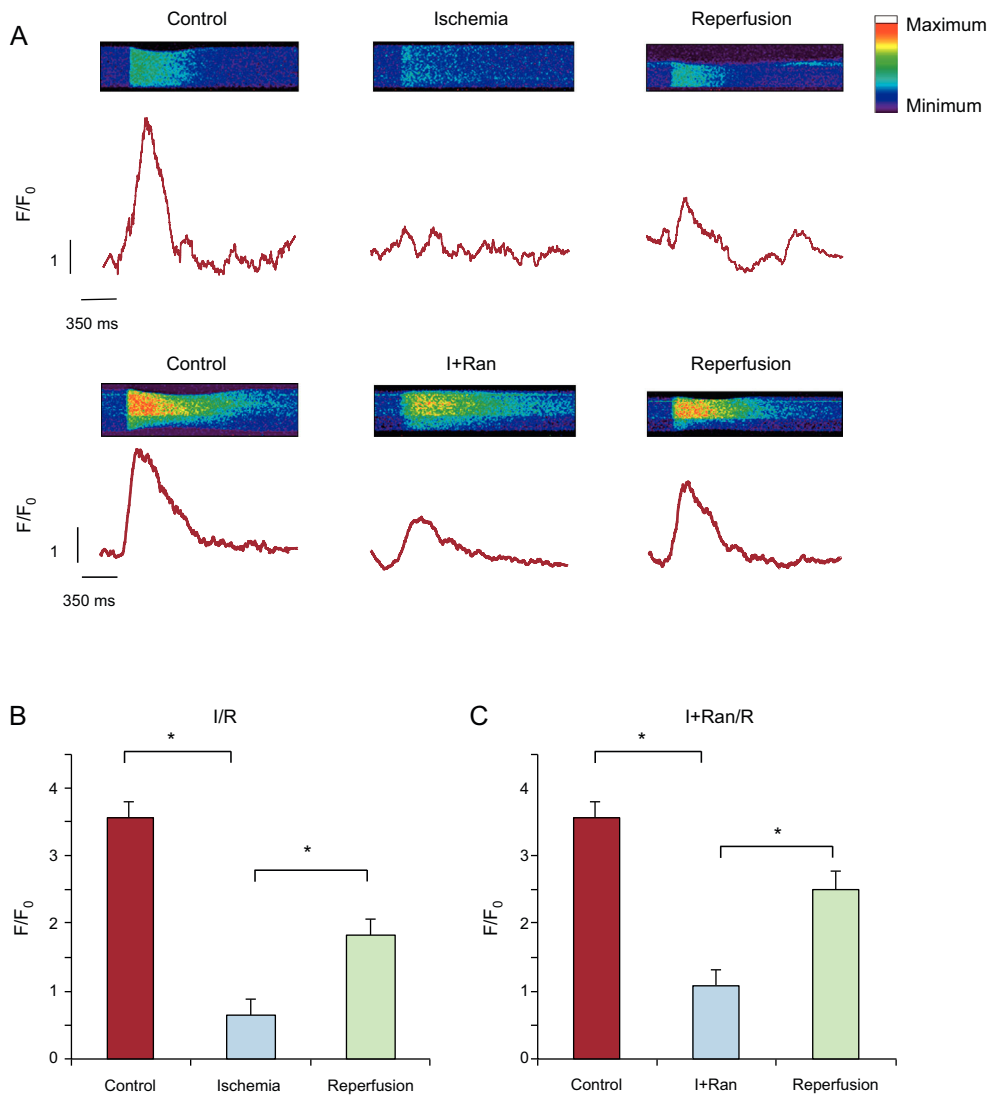
Furthermore, the pattern of diastolic intracellular  $[Ca^{2+}]$  using confocal microscopy showed a significant increase in diastolic intracellular  $[Ca^{2+}]$  during ischemia and a minimum recovery on reperfusion in cells subjected to I/R (Figure 6A). However, compared with the I+Ran/R protocol, the increase in diastolic intracellular  $[Ca^{2+}]$  during ischemia and at reperfusion was lower than values in the I/R group. Finally, ranolazine did not improve cell shortening recovery in cells submitted to the I+Ran/R protocol compared with those subjected to I/R (Figure 6B).

### Ranolazine Increased Sarcoplasmic Reticulum $Ca^{2+}$ Load but did not Stimulate $Na^+/Ca^{2+}$ Exchanger

Because NCX is very important for  $Ca^{2+}$  homeostasis in adult cardiomyocyte, we tested its involvement in  $Ca^{2+}$  handling during



**Figure 4.** Ranolazine restored the diastolic intracellular  $Ca^{2+}$  transients at reperfusion after ischemia. A: graphic representation of changes in diastolic intracellular  $Ca^{2+}$  during the experiment in cardiomyocytes submitted to I/R and cardiomyocytes submitted to I+Ran/R. The concentration of diastolic  $Ca^{2+}$  recovered significantly in cells treated with ranolazine. B: the bar graph summarizes the amplitude of end systolic intracellular  $Ca^{2+}$  in control solution, I/R (n = 59), and I+Ran/R (n = 30). C: the bar graph summarizes the amplitude of end diastolic intracellular  $Ca^{2+}$  in control solution, I/R (n = 59), and I+Ran/R (n = 30). I+Ran/R, ischemia + ranolazine/reperfusion; I/R, ischemia/reperfusion; NS, not significant. \*  $P < .05$ .



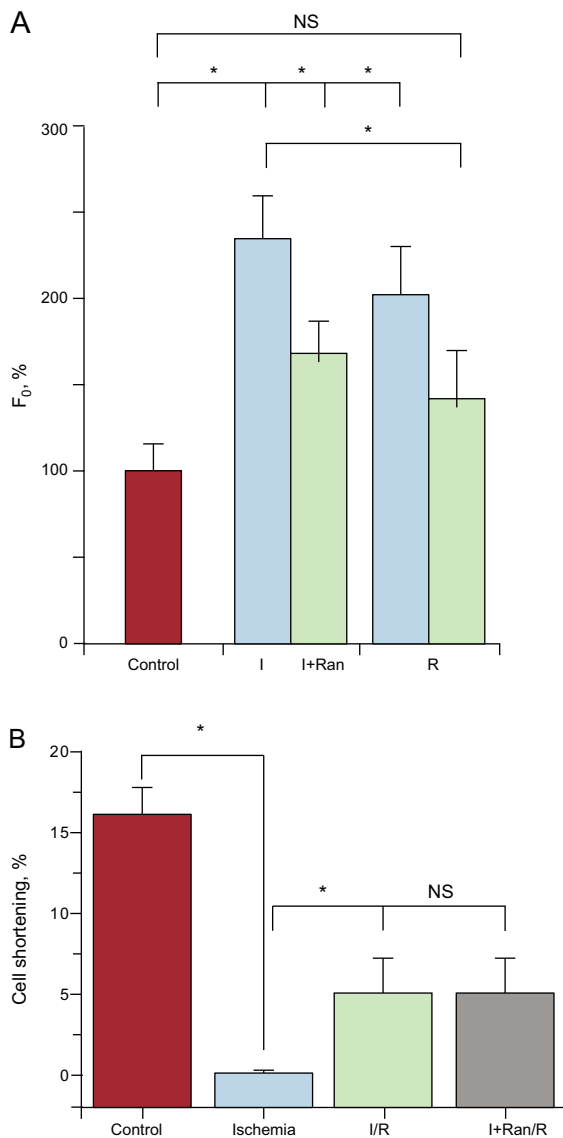
**Figure 5.** Effect of ranolazine on intracellular Ca<sup>2+</sup> transients measured using confocal microscopy. A: representative line scan images (upper panel) showing intracellular Ca<sup>2+</sup> transients in cardiomyocytes from I/R and I+Ran/R stimulated at a frequency of 0.5 Hz and the corresponding amplitude of these transients (lower panel). B and C: bar graphs showing summary data of the change in the amplitude of intracellular Ca<sup>2+</sup> transients in experiment as in (A) (n = 4-6). I+Ran, ischemia + ranolazine; I+Ran/R, ischemia + ranolazine/reperfusion; I/R, ischemia/reperfusion. \* *P* < .05.

I+Ran/R. For this purpose, we used I+Ran/R and, 3 minutes after reperfusion, we applied 10 mM of caffeine. In the presence of caffeine, we studied the tau of recovery to baseline Ca<sup>2+</sup>, which was mainly due to Ca<sup>2+</sup> extrusion through the NCX. Ranolazine did not alter this parameter, suggesting that the NCX exchanger is not involved in the intracellular Ca<sup>2+</sup> enhancement by ranolazine during ischemia (Figure 7A). However, the analysis of sarcoplasmic reticulum Ca<sup>2+</sup> load, estimated by caffeine-evoked intracellular Ca<sup>2+</sup> transients, indicates that it was higher in cells treated with ranolazine compared with untreated cells, indicating that ranolazine promoted sarcoplasmic reticulum load in cardiomyocytes (Figure 7B).

## DISCUSSION

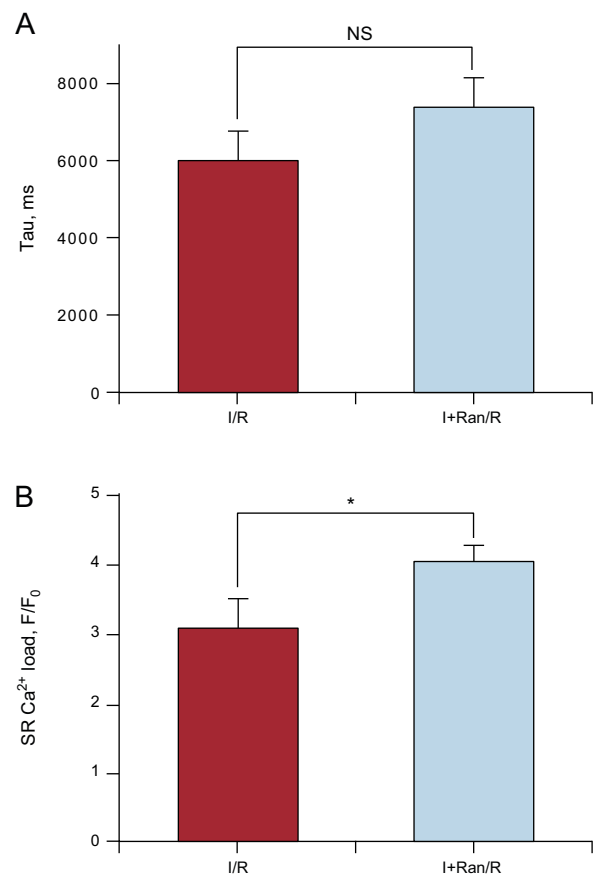
Since the early 1950s, intensive research has been conducted in the field of myocardial protection, the main objective being to characterize the cellular and molecular mechanisms involved in

myocardial protection after the myocardium has undergone a process of I/R.<sup>15</sup> First, in a previous study,<sup>14</sup> we confirmed the feasibility of our experimental I/R model for isolated cardiomyocytes, in which we were able to analyze in vivo structural and intracellular Ca<sup>2+</sup> changes that occur in the process of I/R.<sup>14</sup> Next, in the present study, we provide new evidence that ranolazine, which is widely used for antianginal therapies,<sup>16</sup> can protect cardiomyocytes against I/R injury through regulation of intracellular Ca<sup>2+</sup> handling independently of its effect on I<sub>NaL</sub>. Using 2 different approaches to analyze intracellular Ca<sup>2+</sup> changes, we studied changes in intracellular Ca<sup>2+</sup> in cardiomyocytes subjected to ischemia and/or reperfusion and the role of ranolazine, which is able to reduce the Ca<sup>2+</sup> overload generated in I/R processes. In this study, we confirm that application of ranolazine during myocardial ischemia significantly restores the amplitude of intracellular Ca<sup>2+</sup> transients in reperfusion. Moreover, we not only noticed improvement in the amplitude of the transients but also observed that diastolic intracellular Ca<sup>2+</sup>, which remained elevated throughout ischemia, returned to baseline levels after treatment with



**Figure 6.** Changes in diastolic intracellular Ca<sup>2+</sup> in cells treated with ranolazine. A: bar graph comparing the amplitude of diastolic Ca<sup>2+</sup> concentration recorded in control solution (red), ischemia, and reperfusion in the ischemia-reperfusion (blue, n = 6) and in ischemia + ranolazine/reperfusion (green, n = 4) using confocal microscopy. B: cell shortening in cardiomyocytes (n = 10) from control solution (red), ischemia (blue), ischemia-reperfusion (green) and ischemia + ranolazine/reperfusion (grey). I+Ran, ischemia + ranolazine; I+Ran/R, ischemia + ranolazine/reperfusion; I/R, ischemia/reperfusion; NS, not significant. \* P < .05.

ranolazine during ischemia. These data are consistent with studies conducted by Hwang et al,<sup>17</sup> in Langendorff-perfused rat hearts, in which ranolazine was applied prior to ischemia. These authors observed that intracellular Ca<sup>2+</sup> transients, abolished by the interruption of left ventricular function after a certain period of ischemia, were rapidly restored during postischemic reperfusion with ranolazine.<sup>17</sup> However, in this study, residual intracellular Ca<sup>2+</sup> remained significantly high compared with baseline values prior to ischemia induction.<sup>17</sup> Furthermore, in this study, the analysis of caffeine-evoked intracellular Ca<sup>2+</sup> transients suggested that ranolazine increased the efficiency of the sarcoplasmic reticulum Ca<sup>2+</sup> load, which is essential to preserve efficient excitation-contraction coupling in cardiomyocytes after an



**Figure 7.** Effect of ranolazine effect on the Na<sup>+</sup>/Ca<sup>2+</sup> exchanger and sarcoplasmic reticulum Ca<sup>2+</sup> load. A: the bar graph shows the analysis of the decay in the intracellular Ca<sup>2+</sup> transient (tau, milliseconds) induced by 10 mM caffeine, which evaluates Na<sup>+</sup>/Ca<sup>2+</sup> exchanger function. B: caffeine-evoked Ca<sup>2+</sup> transients peak, which estimates sarcoplasmic reticulum Ca<sup>2+</sup> load. I+Ran/R, ischemia + ranolazine/reperfusion; I/R, ischemia/reperfusion; NS, not significant; SR, sarcoplasmic reticulum. Data are from cells submitted to ischemia-reperfusion protocol and from cells treated with ranolazine in ischemia (ischemia + ranolazine/reperfusion). Summary data are from 37 cells. \*Statistical significance.

ischemic period. Moreover, the analysis of the decay time constant of the intracellular Ca<sup>2+</sup> transient (tau) showed that ranolazine treatment during ischemia did not enhance intracellular Ca<sup>2+</sup> extrusion via the NCX. Thus, NCX seemed not to be implicated in the diastolic intracellular Ca<sup>2+</sup> increase in reperfusion when cells were treated with ranolazine during ischemia. Therefore, alternative mechanisms must be involved in this effect of ranolazine on intracellular Ca<sup>2+</sup>, which are worth investigating.

Most previous studies have applied ranolazine prior to ischemia.<sup>17,18</sup> Here, we applied the drug once ischemia had been started and/or at reperfusion. We aimed to reproduce what might happen in the clinical scenario when drugs should be administered at the onset of reperfusion. Significant beneficial effects on intracellular Ca<sup>2+</sup> regulation were only observed only ranolazine was applied during ischemia, which might limit its use for clinical application in patients with ST-segment elevation myocardial infarction. However, we believe that it is still important to understand these effects on the Ca<sup>2+</sup> homeostasis of cardiomyocytes in I/R.

In recent decades, there has been an explosion of information regarding changes in contractility following I/R myocardial syndrome, as in the case of processes known as “stunned myocardium” (stunning) and hibernating heart.<sup>19,20</sup> Ca<sup>2+</sup> plays a central role in the regulation of contraction and heart rate and has

been associated with prevailing heart disease, directly or indirectly, and to changes in the behavior of intracellular  $\text{Ca}^{2+}$ .<sup>21–23</sup> The intracellular  $\text{Ca}^{2+}$  overload causes an increase in diastolic interaction of the myofilaments actin/myosin and increased left ventricular diastolic pressure (eg, “stiffness”, inability to relax normally). This diastolic disorder occurs due to prolongation of action potentials and slowing of biochemical pumps, which are necessary for the reuptake of intracellular calcium.<sup>24,25</sup> As a result, contractile myocardial work, oxygen consumption, and the compression of the vascular space during diastole may be abnormally high. The compression of the vascular space leads to a reduction of myocardial blood flow that decreases oxygen supply, especially in the subendocardial region of the left ventricle, while increasing the demand for oxygen to support contractile work. This pattern of cause and effect has the characteristics of a deleterious positive “feedback” system, in which ischemia generates further ischemia.<sup>26,27</sup> With the experiments performed in our research, we demonstrated that intracellular diastolic intracellular  $\text{Ca}^{2+}$  recovered significantly in adult rat cardiomyocytes subjected to a protocol of I/R when we applied ranolazine during ischemia. These data are in line with the results of other studies,<sup>18,28</sup> in which the effect of ranolazine occurred with the inhibition of the  $I_{\text{NaL}}$  using a model of a full heart. Ranolazine reduced the overload of intracellular  $\text{Ca}^{2+}$ , returning postischemic diastolic intracellular  $\text{Ca}^{2+}$  values close to baseline preischemic levels. Sossalla et al<sup>29</sup> studied the potential effect of ranolazine on diastolic intracellular  $\text{Na}^+$  and  $\text{Ca}^{2+}$  overload and its ability to improve diastolic function in the muscle fibers of ventricles of human hearts from patients with end-stage heart failure undergoing heart transplantation.<sup>29</sup> Furthermore, to investigate the beneficial effect of ranolazine on diastolic pressure, they used *Anemonia sulcata* toxin II (40 nM) to increase intracellular  $\text{Na}^+$  concentration in rabbit ventricular myocytes. In the presence of ranolazine,  $I_{\text{NaL}}$  current, as well as diastolic intracellular  $\text{Na}^+$  and intracellular  $\text{Ca}^{2+}$ , decreased in all pacing rates. In addition, ranolazine significantly accelerated the decline of the  $\text{Ca}^{2+}$  transient, which was initially slowed by *A. sulcata* toxin II.<sup>30</sup>

## CONCLUSIONS

In conclusion, our results clearly show that, when administered during ischemia, ranolazine protects isolated adult rat cardiomyocytes from damage by I/R, improving the excitation-contraction coupling process and decreasing  $\text{Ca}^{2+}$  overload in reperfusion, which is of major interest to preserve heart contractility from I/R injuries.

## ACKNOWLEDGEMENTS

We thank Florence Lefevbre for her help with cell isolation.

## FUNDING

This study was supported by the Spanish Ministry of Science and Innovation (BFU2013-45564-C2-2); *Instituto de Salud Carlos III* (PI12/00941) and RIC (*Red de Investigación Cardiovascular*) (RD12/0042/0041; RD12/0042/0030); by The Andalusia Government (PI-0108-2012; P10-CVI-6095), and by the French ANR (*Agence Nationale de la Recherche*) (ANR-13-BSV1-0023-01).

## CONFLICTS OF INTEREST

None declared.

## REFERENCES

- Townsend N, Wickramasinghe K, Bhatnagar P, Smolina K, Nichols M, Leal J, et al.; British Heart Foundation Health Promotion Research Group. Coronary heart disease statistics. A compendium of health statistics 2012 edition. Oxford: University of Oxford Edition British Heart Foundation; 2012.
- O’Gara PT, Kushner FG, Ascheim DD, Casey Jr DE, Chung MK, De Lemos JA, et al.; American College of Emergency Physicians; Society for Cardiovascular Angiography and Interventions. 2013 ACCF/AHA guideline for the management of ST-elevation myocardial infarction: a report of the American College of Cardiology Foundation/American Heart Association Task Force on Practice Guidelines. *J Am Coll Cardiol.* 2013;61:e78–140.
- Urbano-Moral JA, Lopez-Haldon JE, Fernandez M, Mancha F, Sanchez A, Rodriguez-Puras MJ, et al. Prognostic value of different serum biomarkers for left ventricular remodelling after ST-elevation myocardial infarction treated with primary percutaneous coronary intervention. *Heart.* 2012;98:1153–9.
- Prescimon T, Lionetti V, Cabiati M, Caselli C, Aquaro GD, Matteucci M, et al. Apoptotic transcriptional profile remains activated in late remodeled left ventricle after myocardial infarction in swine infarcted hearts with preserved ejection fraction. *Pharmacol Res.* 2013;70:41–9.
- Eltzschig HK, Collard CD. Vascular ischaemia and reperfusion injury. *Br Med Bull.* 2004;70:71–86.
- Kristján T, Siesjö BK. Calcium in Ischemic Cell Death. *Stroke.* 1998;29:705–18.
- Ruiz-Meana M, David García-Dorado D. Fisiopatología del daño miocárdico por isquemia-reperusión: nuevas oportunidades terapéuticas en el infarto agudo de miocardio. *Rev Esp Cardiol.* 2009;62:199–209.
- Hale SL, Leeka JA, Kloner RA. Improved Left Ventricular Function and Reduced Necrosis after Myocardial Ischemia/Reperfusion in Rabbits Treated with Ranolazine, an Inhibitor of the Late Sodium Channel. *J Pharmacol Exp Ther.* 2006;318:418–23.
- Cheng JW. Ranolazine for the management of coronary artery disease. *Clin Ther.* 2006;28:1996–2007.
- Belardinelli L, Shryock JC, Fraser H. The mechanism of ranolazine action to reduce ischemia-induced diastolic dysfunction. *Eur Heart J Suppl.* 2006;8:A10–3.
- Cordero A, Agudo P, Bertomeu-Martínez V. Utilidades terapéuticas de la ranolazina en la cardiopatía isquémica. *Rev Esp Cardiol Supl.* 2010;10(B):55–61.
- Tamargo J, Amorós I, Barana A, González M, Dolz P, Gómez R, et al. Farmacología clínica de la ranolazina, un nuevo fármaco en el tratamiento de la angina crónica estable. *Rev Esp Cardiol Supl.* 2010;10(B):41–54.
- Calderón-Sánchez E, Delgado C, Ruiz-Hurtado G, Domínguez-Rodríguez A, Cachofeiro V, Rodríguez-Moyano M, et al. Urocortin induces positive inotropic effect in rat heart. *Cardiovasc Res.* 2009;83:717–25.
- Calderón-Sánchez EM, Ruiz-Hurtado G, Smani T, Delgado C, Benitah JP, Gómez AM, Ordóñez A. Cardioprotective action of urocortin in postconditioning involves recovery of intracellular calcium handling. *Cell Calcium.* 2011;50:84–90.
- Calderón Sánchez EM. Potenciación de los mecanismos endógenos de protección miocárdica frente al síndrome de isquemia-reperusión [PhD thesis]. Sevilla: Universidad de Sevilla; 2009.
- Kloner R, Dowl J, Bhandari A. The antianginal agent ranolazine is a potent antiarrhythmic agent that reduces ventricular arrhythmias: through a mechanism favoring inhibition of late sodium channel. *Cardiovasc Ther.* 2011;29:e36–41.
- Hwang H, Arcidi Jr JM, Hale SL, Simkhovich BZ, Belardinelli L, Dhalla AK, et al. Ranolazine as a Cardioplegia Additive Improves Recovery of Diastolic Function in Isolated Rat Hearts. *Circulation.* 2009;120(11 Suppl):S16–21.
- Soliman D, Wang L, Hamming KS, Yang W, Fatehi M, Carter CC, et al. Late sodium current inhibition alone with ranolazine is sufficient to reduce ischemia- and cardiac glycoside-induced calcium overload and contractile dysfunction mediated by reverse-mode sodium/calcium exchange. *J Pharmacol Exp Ther.* 2012;343:325–32.
- Kloner RA, Jennings RB. Consequences of brief ischemia: stunning, preconditioning, and their clinical implications: part 1. *Circulation.* 2001;104:2981–9.
- Duncker DJ, Schulz R, Ferrari R, Garcia-Dorado D, Guarnieri C, Heusch G, et al. “Myocardial stunning” remaining questions. *Cardiovasc Res.* 1998;38:549–58.
- Hove-Madsen L. Asociación de la miocardiopatía chagásica con el comportamiento anormal del calcio diastólico. *Rev Esp Cardiol.* 2011;64:451–2.
- Marban E, Koretsune Y, Corretti M, Chacko VP, Kusuoka H. Calcium and its role in myocardial cell injury during ischemia and reperfusion. *Circulation.* 1989;80(6 Suppl). IV17–22.
- Lee JA, Allen DG. Mechanisms of acute ischemic contractile failure of the heart. Role of intracellular calcium. *J Clin Invest.* 1991;88:361–7.
- Armoundas AA, Rose J, Aggarwal R, Stuyvers BD, O’roure B, Kass DA, et al. Cellular and molecular determinants of altered  $\text{Ca}^{2+}$  handling in the failing rabbit heart: primary defects in SR  $\text{Ca}^{2+}$  uptake and release mechanisms. *Am J Physiol Heart Circ Physiol.* 2007;292:H1607–18.
- Wickenden AD, Kaprielian R, Kassiri Z, Tsoporis JN, Tsushima R, Fishman GI, et al. The role of action potential prolongation and altered intracellular calcium handling in the pathogenesis of heart failure. *Cardiovasc Res.* 1998;37:312–23.
- Luna Ortiz P, Serrano Valdes X, González Chon O, Santibañez Escobar F. Disfunción ventricular izquierda en el perioperatorio de cirugía cardíaca. *Rev Mex Anest.* 2002;25:112–28.
- Belardinelli L, Shryock JC, Fraser H. Inhibition of the late sodium current as a potential cardioprotective principle: effects of the late sodium current inhibitor ranolazine. *Heart.* 2006;92:IV6–14.



28. Aldakkak M, Camara AKS, Heisner JS, Yang M, Stowe DF. Ranolazine reduces  $\text{Ca}^{2+}$  overload and oxidative stress and improves mitochondrial integrity to protect against ischemia reperfusion injury in isolated hearts. *Pharmacol Res.* 2011;64:381–92.
29. Sossalla S, Wagner S, Rasenack EC, Ruff H, Weber SL, Schöndube FA, et al. Ranolazine improves diastolic dysfunction in isolated myocardium from failing human hearts—Role of late sodium current and intracellular ion accumulation. *J Mol Cell Cardiol.* 2008;45:32–43.
30. Fraser H, Belardinelli L, Wang L, Light PE, McVeigh JJ, Clanachan AS. Ranolazine decreases diastolic calcium accumulation caused by ATX-II or ischemia in rat hearts. *J Mol Cell Cardiol.* 2006;41:1031–8.