

Image in cardiology

Left Ventricular Pseudo-pseudoaneurysm



Seudoseudoaneurisma ventricular izquierdo

Alberto García-Lledó,^{a,*} José Luis Moya Mur,^b and Javier García Segovia^a

^aServicio de Cardiología, Hospital Universitario Príncipe de Asturias, Alcalá de Henares, Madrid, Spain

^bServicio de Cardiología, Hospital Universitario Ramón y Cajal, Madrid, Spain

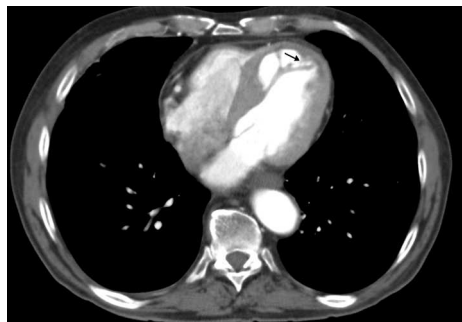


Figure 1.

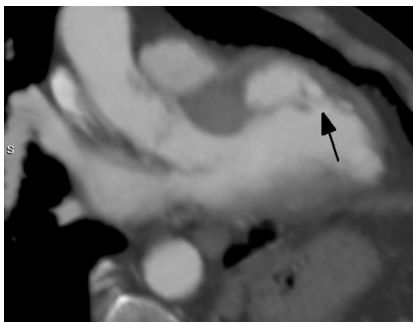


Figure 2.



Figure 3.

Left ventricular pseudo-pseudoaneurysm is a rare type of subepicardial aneurysm. It consists of an intramyocardial dissecting hematoma communicating with the ventricular cavity through a thin neck. Very few cases have been reported, most of them after a myocardial infarction.

The figures show 3 multislice computed tomography scan views of a septal pseudo-pseudoaneurysm. It appears as an intramyocardial dissecting chamber with the subepicardial myocardium clearly visible. An arrow marks the neck. Figure 1 shows a horizontal section and Figures 2 and 3 show long and short axis views, respectively, of the left ventricle, generated by multiplanar reconstruction. Images were obtained from a 72-year-old male patient who experienced an anteroseptal myocardial infarction 16 years ago. The patient was asymptomatic. The pseudo-pseudoaneurysm was previously known and has not changed in size during the last 7 years.

* Corresponding author:

E-mail address: alberto.garcia-lledo@uah.es (A. García-Lledó).

Available online 27 June 2014