

Original article

Molecular Analysis of *BMPR2*, *TBX4*, and *KCNK3* and Genotype-Phenotype Correlations in Spanish Patients and Families With Idiopathic and Hereditary Pulmonary Arterial Hypertension



Paula Navas,^{a,b,◇} Jair Tenorio,^{c,d,◇} Carlos Andrés Quezada,^{a,b} Elvira Barrios,^e Gema Gordo,^{c,d} Pedro Arias,^{c,d} Manuel López Meseguer,^{c,f} Alejandro Santos-Lozano,^{g,h} Julian Palomino Doza,^{b,i} Pablo Lapunzina,^{c,d,◇} and Pilar Escribano Subías^{a,b,◇,*}

^aRed de Investigación Cardiovascular, Instituto de Salud Carlos III, Madrid, Spain

^bUnidad Multidisciplinar de Hipertensión Pulmonar, Servicio de Cardiología, Hospital Universitario 12 de Octubre, Madrid, Spain

^cCentro de Investigación Biomédica en Red de Enfermedades Raras (CIBERER), Instituto de Salud Carlos III, Madrid, Spain

^dInstituto de Genética Médica y Molecular (INGEMM), Hospital Universitario La Paz, Madrid, Spain

^eServicio de Cardiología Pediátrica, Hospital Ramón y Cajal, Madrid, Spain

^fServicio de Neumología, Hospital Universitario Vall d'Hebron, Barcelona, Spain

^gGrupo de Investigación en Discapacidad Física y Sensorial (GIDFYS), Departamento de Ciencias de la Salud, Universidad Europea Miguel de Cervantes, Valladolid, Spain

^hInstituto de Investigación Hospital Universitario 12 Octubre (i+12), Madrid, Spain

ⁱUnidad de Cardiopatías Familiares, Hospital Universitario 12 de Octubre, Madrid, Spain

Article history:

Received 6 October 2015

Accepted 30 March 2016

Available online 21 July 2016

Keywords:

Idiopathic pulmonary arterial hypertension

Hereditary pulmonary arterial hypertension

BMPR2

TBX4

KCNK3

Screening

ABSTRACT

Introduction and objectives: Recent advances in genetics have led to the discovery of new genes associated with pulmonary arterial hypertension, such as *TBX4* and *KCNK3*. The phenotype and prognosis associated with these new genes have been scarcely described and their role in the Spanish population is unknown. The aim of this study was to characterize the genetics of a Spanish cohort of patients with idiopathic and hereditary pulmonary arterial hypertension and to describe the phenotype and prognostic factors associated with *BMPR2* and the new genes (*KCNK3* and *TBX4*).

Methods: A total of 165 adult patients were screened for *BMPR2*, *KCNK3*, and *TBX4* mutations, 143 with idiopathic pulmonary arterial hypertension and 22 with hereditary pulmonary arterial hypertension. Baseline characteristics and survival were compared among the different subgroups and predictors of poor outcomes were analyzed. We also performed family screening.

Results: The genetic study identified a possibly associated mutation in 11.10% of the idiopathic cases ($n = 16$) and in 68.18% of the hereditary cases ($n = 15$). There were 19 mutations in *BMPR2*, 4 in *TBX4*, and 3 in *KCNK3*. The forms associated with *TBX4* showed the highest survival rate ($P < .01$). Advanced functional class at diagnosis was the only factor associated with poor outcomes in the hereditary forms. In the family screening, 37.5% of relatives tested positive.

Conclusions: The genetics of pulmonary arterial hypertension in the Spanish population may differ from other populations, with a lower proportion of *BMPR2* causative mutations. In our cohort, *TBX4*-related forms of pulmonary arterial hypertension showed a more benign course and late diagnosis was the only predictor of adverse outcomes in the hereditary forms of the disease.

© 2016 Sociedad Española de Cardiología. Published by Elsevier España, S.L.U. All rights reserved.

Análisis de los genes *BMPR2*, *TBX4* y *KCNK3* y correlación genotipo-fenotipo en pacientes y familias españolas con hipertensión arterial pulmonar

RESUMEN

Introducción y objetivos: Avances recientes en genética han permitido el descubrimiento de nuevos genes relacionados con la hipertensión arterial pulmonar, como *TBX4* y *KCNK3*. El fenotipo y el pronóstico asociado a ellos se han detallado escasamente y se desconoce su papel en la población española. El objetivo de este estudio es caracterizar genotípicamente una cohorte española de pacientes con hipertensión arterial pulmonar idiopática y hereditaria, describiendo el fenotipo y los factores pronósticos asociados a *BMPR2* y a los nuevos genes (*KCNK3* y *TBX4*).

Palabras clave:

Hipertensión arterial pulmonar idiopática

Hipertensión arterial pulmonar heredable

BMPR2

TBX4

KCNK3

Cribado

SEE RELATED ARTICLE:

<http://dx.doi.org/10.1016/j.rec.2016.05.026>, Rev Esp Cardiol. 2016;69:1003–4.

* Corresponding author: Unidad Multidisciplinar de Hipertensión Pulmonar, Servicio de Cardiología, Hospital Universitario 12 de Octubre, Avenida de Córdoba s/n, 28041 Madrid, Spain.

E-mail address: mariapilar.escribano@salud.madrid.org (P. Escribano Subías).

◇ These authors have contributed equally to this work.

<http://dx.doi.org/10.1016/j.rec.2016.03.029>

1885-5857/© 2016 Sociedad Española de Cardiología. Published by Elsevier España, S.L.U. All rights reserved.

Métodos: Se seleccionó a 165 pacientes adultos con hipertensión arterial pulmonar: 143 con hipertensión arterial pulmonar idiopática y 22 con hipertensión arterial pulmonar familiar. Se compararon las características basales y la supervivencia libre de eventos entre los distintos subgrupos, se analizaron los factores predictores de mal pronóstico y se llevó a cabo el cribado familiar.

Resultados: El estudio genético fue positivo en 16 pacientes con hipertensión arterial pulmonar idiopática (11,1%) y 15 con hipertensión arterial pulmonar familiar (68,18%), y se hallaron 19 mutaciones en *BMPR2*, 4 en *TBX4* y 3 en *KCNK3*. Se observó mayor supervivencia libre de eventos en las formas asociadas a *TBX4* ($p < 0,01$). El diagnóstico en clases funcionales avanzadas fue el único factor pronóstico en las formas heredables. El cribado de familiares fue positivo en el 37,5%.

Conclusiones: En la población española con hipertensión arterial pulmonar puede existir un sustrato genético diferente, con menor proporción de mutaciones en *BMPR2*. A la vista de nuestros resultados, las formas asociadas a *TBX4* podrían conllevar un fenotipo más benigno, y el diagnóstico tardío sería un factor de mal pronóstico en las formas heredables de la enfermedad.

© 2016 Sociedad Española de Cardiología. Publicado por Elsevier España, S.L.U. Todos los derechos reservados.

Abbreviations

BMPR2: bone morphogenetic protein receptor type 2
HPAH: hereditary pulmonary arterial hypertension
IPAH: idiopathic pulmonary arterial hypertension
KCNK3: potassium channel subfamily K, member 3
PAH: pulmonary arterial hypertension
TBX4: transcription factor T Box 4 gene

INTRODUCTION

Pulmonary arterial hypertension (PAH) is an uncommon disease associated with a poor prognosis in untreated individuals. Its forms of presentation are diverse and include idiopathic PAH (IPAH), which has no known cause, and hereditary PAH (HPAH), which is related to a genetic alteration or shows familial aggregation.

Idiopathic PAH is a rare disease affecting 5.6 adults/million population in Spain, with 1.2 new cases per million population a year according to data from the *Registro Español de Hipertensión Arterial Pulmonar* (REHAP), a voluntary Spanish registry of patients with PAH founded in 2007. The methodology of this registry has been detailed elsewhere.¹

The first gene linked to the development of HPAH was *BMPR2*.² This gene encodes the bone morphogenetic protein receptor type 2 and regulates multiple cellular functions. Mutations in *BMPR2* have been described in 75% of the hereditary forms of PAH and 25% of the idiopathic forms. These mutations show an autosomal dominant inheritance pattern, incomplete penetrance (~20%) varying by sex (42% in women vs 14% in men),^{2,3} and variable expressivity.^{4–7} The underlying molecular mechanisms are still unknown.^{8–12}

There are more than 300 known mutations in *BMPR2* spread throughout its 13 exons and 4 protein domains.^{4,5} Most of these mutations (70%) are frameshifts, nonsense mutations, or deletions⁴; the remainder (30%) are missense mutations.

Recent advances in genetics, such as massively parallel sequencing, have enabled the discovery of new genes related to HAP,^{4,13–20} such as *KCNK3*, encoding for a pH-dependent potassium channel,¹³ *TBX4*, encoding for the *TBX4* transcription factor¹⁴ involved in embryonic development and related to small patella syndrome, and the *CAV1*,¹⁵ *TOPBP1*, *SMADS*, and *NOTCH3*^{4,13–20} genes. In addition, *EIF2AK4* has been linked to the development of recessive forms of pulmonary veno-occlusive disease.^{16,17} Thus, PAH is a genetically complex disease with a growing number of implicated genes, although there is little understanding of the phenotype associated with each gene.

The objectives of this study were to genetically and phenotypically characterize a Spanish cohort of IPAH and HPAH patients and analyze the prognostic impact associated with the genetic variants, the predictors of death or placement on the lung transplant list, and the familial impact in terms of penetrance and family screening dynamics.

METHODS

This multicenter Spanish study of PAH genetics was begun in November 2011. It involved an observational and ambispective study of adult IPAH/HPAH patients recruited in 2 Spanish centers (*Hospital Universitario 12 de Octubre*, Madrid, and *Hospital Universitario Vall d'Hebron*, Barcelona, and included in the *Biobanc* tissue bank of the *Hospital Clínic de Barcelona*). Patients with veno-occlusive disease were excluded from the present analysis. The study comprised 2 cohorts: a cohort of consecutive patients treated in the *Hospital Universitario 12 de Octubre* and *Hospital Universitario Vall d'Hebron* (January 2011–May 2015) and a cohort of patients included in the *Biobanc* tissue bank of the *Hospital Clínic de Barcelona* (January 2013–March 2014). The diagnosis of PAH was made according to international recommendations.²¹ Prior to the genetic analysis and based on the presence of a family history of PAH, the patients were classified as having HPAH (positive family history) or IPAH (negative family history). After the genetic analysis, they were reclassified after the genetic analysis as having idiopathic forms (negative family history and without genetic alterations) and hereditary forms (patients with a positive family history and positive genetic test results, patients with a positive family history and negative genetic test results, and patients with a negative family history but positive test results). Clinical data were obtained from REHAP and the genetic testing was performed in the Institute of Medical and Molecular Genetics (INGEMM) of the *Hospital Universitario La Paz*, Madrid.

Clinical Characterization

The following data were collected in all patients at diagnosis: demographic characteristics (age and sex), clinical features (New York Heart Association [NYHA] functional class, 6-minute walk test, syncope), hemodynamic variables (right atrial pressure, mean pulmonary artery pressure, cardiac index and arterial pulmonary vascular resistance, acute vasodilator test response), and pulmonary function parameters (forced expiratory flow in 1 s, forced vital capacity, and carbon monoxide diffusing capacity). Clinical and radiological screening for small patella syndrome was performed in carriers of the *TBX4* mutation.

Molecular Study

Sanger sequencing was performed of all exon and exon-intron boundaries of *BMPR2*, *KCNK3*, and *TBX4*. Screening for structural variants and chromosome rearrangements was performed using MLPA (multiplex ligation-dependent probe amplification) (Appendix 1 of the supplementary material).

The variants identified were classified according to their frequency in the general population. Variants absent from public databases (Exome Variant Server, 1000G, and ExAc¹⁵⁻³⁵ of the supplementary material) or with very low allele frequencies (< 0.01%) were considered mutations. The pathogenicity of variants was assessed by taking into account their effect on the protein level, their presence in previous reports in the literature, the evidence of cosegregation with the disease, and the *in silico* predicted impact on the protein using widely used software (Polyphen2, MutationTaster^{45,55} of the supplementary material, SIFT [Sorting Intolerant from Tolerant], MutPred, SNPs&GO). The variants identified were classified as pathogenic, possibly pathogenic, variants of unknown significance, and nonpathogenic variants (Appendix 2 of the supplementary material). Once the proband study was completed, a genetic study of the first-degree relatives of the mutation carriers was performed and the genealogical tree was constructed.

Statistical Analysis

The statistical software Stata (version 13, Stata Corp.; College Station, Texas, United States) and IBM SPSS 22 (SPSS, Inc.; Chicago, Illinois, United States) were used for the statistical analysis and the data are presented as mean \pm standard deviation with a level of significance of $P \leq .05$. Kaplan-Meier univariate survival analysis used the time of diagnosis as the start of follow-up and the 15th June 2015 as the end of follow-up, with a maximum follow-up of 15 years (generalized type I censoring). The log rank test was used to compare the survival rates of the IPAH

and HPAH patients and the forms associated with the different genes; outcome was defined as death or placement on the lung transplant waiting list. The hazard ratio and 95% confidence interval were calculated for classical prognostic factors (right atrial pressure, cardiac index, 6-minute walk test, NYHA functional class at diagnosis, sex, mean pulmonary artery pressure, and pulmonary vascular resistance), as well as hereditary disease. Also evaluated was the interaction of the classical prognostic factors with hereditary disease. Those variables showing a significance level of $P < .10$ in the univariate analysis were included in the multivariate Cox regression model, using forward and backward stepwise selection to confirm the results.

The study was performed in accordance with the principles of the Declaration of Helsinki and Spanish law on data protection and was approved by the ethics committees of the participating centers. All patients provided informed consent.

RESULTS

Of the 165 patients diagnosed with PAH between November 1st 2011 and May 1st 2015; 143 (86.6%) had IPAH and 22 (13.3%) had HPAH. The baseline characteristics of these patients are shown in Table 1.

Clinical and Genetic Classification of the Patients With Idiopathic Pulmonary Arterial Hypertension/Hereditary Pulmonary Arterial Hypertension

A positive genetic test was observed in 31 probands (18.78%). Specifically, in 16 patients with IPAH (11.10%) and in 15 patients with HPAH (68.18%). Nineteen *BMPR2* variants (Table 1S of the supplementary material) were identified in 24 probands, as well as 3 *TBX4* variants in 4 probands and 2 *KCNK3* variants in 3 probands (Table 2S of the supplementary material). The baseline clinical characteristics according to the affected gene are shown in Table 2.

Table 1

Baseline Characteristics of the Population. Comparison of Hereditary Pulmonary Arterial Hypertension and Idiopathic Pulmonary Arterial Hypertension

	Total population (n = 165)	HPAH (n = 38)	IPAH (n = 127)	P
Pre-GA subtype†	143 IPAH, 22 HPAH	16 IPAH, 22 HPAH	127 IPAH	—
Age, y	40.68 \pm 16.13	35.18 \pm 17.51	42.84 \pm 15.22	.006
Male sex, %	24.8	38.4	20.63	.02
NYHA, %				.054
I-II	33.4	43.6	30.1	
III	61.8	43.6	66.6	
IV	4.2	8.1	3.1	
Syncope at diagnosis, %	38.2	17.9	44.4	.003
Acute responder, %	33.30	12.82	39.68	.001
Chronic responder, %	20.60	2.63	26.10	.005
FVC, %	88.89 \pm 16.9	93.67 \pm 11.35	87.54 \pm 18.25	.03
FEV ₁ , %	87.29 \pm 14.89	92.44 \pm 12.1	85.89 \pm 15.46	.01
DLCO, %	72.23 \pm 20.67	76.00 \pm 24.14	71.91 \pm 21.10	NS
6MWT, m	410.61 \pm 116.76	417.19 \pm 106.64	405.14 \pm 116.09	NS
RAP, mmHg	7.59 \pm 4.79	8.16 \pm 5.58	7.42 \pm 4.53	NS
mPAP, mmHg)	55.77 \pm 14.43	59.28 \pm 15.54	54.69 \pm 13.95	NS
CI (L/m/m ²)	2.34 \pm 0.72	2.31 \pm 0.67	2.36 \pm 0.67	NS
PVR, WU	13.67 \pm 10.93	15.57 \pm 9.03	12.79 \pm 5.47	.02

6MWT, 6-minute walk test; CI, cardiac index; DLCO, diffusing capacity of carbon monoxide; FEV₁, forced expiratory volume in the first second; FVC, forced vital capacity; HPAH, hereditary pulmonary arterial hypertension; IPAH, idiopathic pulmonary arterial hypertension; NS, not significant; NYHA, New York Heart Association; mPAP, mean pulmonary artery pressure; Pre-GA subtype, PAH subtype before genetic analysis; PVR, pulmonary vascular resistance; RAP, right atrial pressure.

Table 2
Baseline Characteristics According to the Affected Gene

	IPAH (N = 127)	BMPR2 mutation (n = 24)	KCNK3 mutation (n = 3)	TBX4 exon 8 mutation (n = 2)	TBX4 exon 3 mutation (n = 2)	HPAH without mutation (n = 7)
Age, y	42.84 ± 15.22	37.07 ± 15.83	17.52 ± 10.11	7.55 ± 3.5	43 ± 22.3	38.29 ± 18.04
Pre-GA subtype, %	100.0 IPAH	52.1 IPAH	66.6 IPAH	100.0 IPAH	50.0 IPAH	0.0 IPAH
Male sex, %	20.63	38.40	33.30	50.00	0.00	57.10
NYHA III or IV, %	69.9	52.0	66.0	50.0	100.0	42.9
Syncope at diagnosis, %	44.40	23.07	33.3	0.00	0.00	14.28
Acute responder, %	39.68	3.80	33.00	50.00	0.00	42.80
Chronic responder, %	26.1	0.0	0.0	50.00	0.0	0.0
FVC, %	87.54 ± 18.25	95.91 ± 9.37	74.50 ± 4.94	100.00	84.50 ± 19.09	88.66 ± 11.34
FEV ₁ , %	85.89 ± 15.46	95.94 ± 10.16	80.50 ± 4.94	100.00	75.50 ± 9.19	83.33 ± 10.69
DLCO, %	71.91 ± 21.10	78.64 ± 19.09	68.00 ± 12.72	NA	29.00	67.83 ± 14.70
6MWT, m	405.14 ± 116.09	391.33 ± 162.83	415.00 ± 127.28	525.00	406.00 ± 28.80	486.14 ± 74.90
RAP, mmHg	7.42 ± 4.53	6.92 ± 4.36	17.57 ± 9.80	4.50 ± 3.50	10.50 ± 6.38	8.14 ± 4.60
mPAP, mmHg	54.69 ± 13.95	57.59 ± 15.43	73.33 ± 11.84	51.50 ± 28.99	47.00 ± 4.24	60.86 ± 16.83
PVR, WU	12.79 ± 5.47	14.37 ± 6.73	33.90 ± 16.40	10.60 ± 7.63	10.50 ± 0.70	13.15 ± 5.35
CI, L/m/m ²	2.36 ± 0.67	2.33 ± 0.75	2.44 ± 1.01	2.60 ± 0.42	NA	2.32 ± 0.62

6MWT, 6-minute walk test; CI, cardiac index; DLCO, diffusing capacity of carbon monoxide; FEV₁, forced expiratory volume in 1 second; FVC, forced vital capacity; HPAH, hereditary pulmonary arterial hypertension; IPAH, idiopathic pulmonary arterial hypertension; MUT, mutation; NA, not available; NYHA, New York Heart Association; mPAP, mean pulmonary artery pressure; Pre-GA subtype, pulmonary arterial hypertension subtype before genetic analysis; PVR, pulmonary vascular resistance; RAP, right atrial pressure.

Mutations in BMPR2

The genetic study revealed a *BMPR2* variant in 9.1% of the IPAH patients and 50.0% of the HPAH patients. The 19 *BMPR2* variants (8 missense mutations) were found in 24 probands from 20 unrelated families, with 2 unrelated probands showing the same variant (p.Asp491Glu) (Table 1S of the [supplementary material](#)). Eight of these variants have been described in the literature. Of the other 11, 9 were considered pathogenic: 7 involved radical changes (frameshifts, structural variants, or intronic variants with probable effects on splicing) and 2 were located in residues previously described to be mutated in patients with PAH ((p.Cys420Phe located in the same codon as p.Cys420Tyr¹²⁵⁻¹³⁵ of the [supplementary material](#) and p.Cys420Arg^{145,155} of the [supplementary material](#), and p.As487His located in the same codon as p.Asp487Val⁹⁵ of the [supplementary material](#)).). The remaining 2 (p.Cys34Phe and p.Arg365His) were considered possibly pathogenic due to the results of the bioinformatic prediction software. Cosegregation was only demonstrated in 1 family (p.Asn442ThrfsX31). Cosegregation could not be ruled out for the other variants but could not be confirmed given the incomplete penetrance associated with *BMPR2* mutations (Table 3). The baseline characteristics of the patients according to the type of mutation are shown in Table 3S of the [supplementary material](#).

Mutations in KCNK3

Two novel missense mutations (p.Leu214Arg and p.Gly106Arg) were identified in exon 2 of *KCNK3* in a patient with IPAH and 2 related patients with HPAH. p.Gly106Arg was identified in a homozygous state in a proband with an aggressive form of PAH and was considered pathogenic given its cosegregation with the disease. p.Leu214Arg was classified as possibly pathogenic and its *in silico* analysis suggested a probable pathogenic effect (Table 3 and table 2S of the [supplementary material](#)).

Mutations in TBX4

Two missense mutations (p.Met451Val and p.Asn475His) were detected in exon 8 of *TBX4* in 2 patients with IPAH. A 3-nucleotide

insertion in exon 3 was found in 2 related patients with HPAH. The latter variant was considered pathogenic. p.Asn475His was considered possibly pathogenic because bioinformatic analysis suggested a deleterious effect. p.Met451Val was considered of unknown significance because it was classified as benign by pathogenicity prediction software and, although it was absent from the control populations analyzed, the amino acid affected is not evolutionarily well conserved. These findings seemed to indicate that this variant is probably benign. None of the patients met the criteria for small patella syndrome (Table 3 and table 2S of the [supplementary material](#)).

Prognostic Impact of the Genetic Alterations (Kaplan-Meier Survival Analysis)

The mean follow-up was 7.74 ± 4.46 years. Survival analysis failed to show significant differences between IPAH and HPAH (Figure A) and only showed differences among the HPAH forms associated with *TBX4*, *KCNK3*, and *BMPR2* (Figure B).

Analysis of the Factors Predicting Death or Transplant (Cox Regression)

The results of the univariate and multivariate analyses are shown in Table 4 and Table 5 (log likelihood function = -103.29; log-rank chi-square = 13.03; *P* = .005).

Family Screening

The genetic study was refused by 2 of 19 families and accepted by 72 of the 90 family members (80%) belonging to the remaining 17 families. The study identified 21 healthy carriers (29.1%) and 6 affected carriers (8.3%). The characteristics of the carriers are shown in Tables 4S and 5S of the [supplementary material](#). The estimated penetrance was 23.5% for *BMPR2* mutations, 25.0% for *KCNK3* mutations, and 33.0% for *TBX4* mutations.

DISCUSSION

With 165 patients, our series is the largest PAH patient series to be genetically studied in Spain, collecting 33% of idiopathic and

Table 3
Results of the Bioinformatics Study of the Pathogenicity of Previously Undescribed Variants

Gen	Inheritance	Type of PAH	cDNA position	Position in protein and aminoacidic change	Genomic localization (GRCH38/HG38)	Polyphen-2	MutationTaster	SIFT	SNPs&GO	1000G	EVS	ExAC	Splicing (Alamut)	Pathogenicity	Reference
<i>BMPR2</i>	AD	FPAH	c.1259G>T	p.Cys420Phe	chr2:203397438	Damaging (P = .990)	DC (0.999)	Damaging	DC (RI = 9)	0	0	0		Pathogenic	This study
<i>BMPR2</i>	AD	FPAH	c.1325delA	p.Asn442ThrfsX31	chr2:203407082_203407082	N/A	N/A	N/A	N/A	0	0	0		Pathogenic	This study
<i>BMPR2</i>	AD	FPAH	C.101G>T	p.Cys34Phe	chr2:203329556	Probably damaging (P = 1)	DC (0.999)	Damaging	DC (RI = 8)	0	0	0		Possibly pathogenic	This study
<i>BMPR2</i>	AD	IPAH	c.1459G>C	p.Asp487His	chr2:203417484	Probably damaging (P = 1)	DC (0.999)	Damaging	DC (RI = 8)	0	0	0		Pathogenic	This study
<i>BMPR2</i>	AD	IPAH	c.1138DelAT	p.Ile380GlnfsX18	chr2:203397317_203397318	N/A	DC (1)	N/A	N/A	0	0	0		Pathogenic	This study
<i>BMPR2</i>	AD	IPAH	c.77-5_77-2delTTTA	N/A	chr2:203329527_203329530	N/A	N/A	N/A	N/A	0	0	0	Pathogenic (loss of the acceptor canonical splice site)	Pathogenic	This study
<i>BMPR2</i>	AD	IPAH	Dup*	p.Tyr218_Arg225	chr2:203383576_203383599	N/A	DC (1)	N/A	N/A	0	0	0		Pathogenic	This study
<i>BMPR2</i>	AD	IPAH	c.1094G>A	p.Arg365His	chr2:203395643	Probably damaging (P = .529)	DC (0.999)	Tolerated	DC (RI = 0)	0	0	2/121296 Het		Possibly pathogenic	This study
<i>BMPR2</i>	AD	IPAH	Deletion of <i>BMPR2</i>	N/A	N/A	N/A	N/A	N/A	N/A	N/A	N/A	N/A		Pathogenic	This study
<i>BMPR2</i>	AD	IPAH	Deletion of exons 11,12 and 14	N/A	N/A	N/A	N/A	N/A	N/A	N/A	N/A	N/A		Pathogenic	This study
<i>BMPR2</i>	AD	IPAH	c.1277-3G	N/A	chr2:20340700	N/A	N/A	N/A	N/A	N/A	N/A	N/A	Pathogenic (loss of the acceptor canonical splice site)	Pathogenic	This study
<i>TBX4</i>	AD	IPAH	c.1351A>G	p.Met451Val	chr17:59560590	Benign (P < .0005)	Polimorphism (0.888)	Tolerated	Neutral (RI = 7)	0	0	0		Uncertain	This study
<i>TBX4</i>	AD	IPAH	c.1423A>C	p.Asn475His	chr17:59560662	Benign (P < .0005)	DC (0.995)	Tolerated	DC (RI = 0)	0	0	0		Possibly pathogenic	This study
<i>TBX4</i>	AD	FPAH	c.310_312insAAG	p.Lys103_Val104insGlu	chr17:59543208_59543209	Probably damaging (P = 1)	DC (0.991)	N/A	N/A	0	0	0		Pathogenic	This study
<i>KCNK3</i>	AD	IPAH	c.641T>G	p.Leu214Arg	chr2:26950892	Probably damaging (P = .998)	DC (0.999)	Damaging	DC (RI = 9)	0	0	0		Possibly Pathogenic	This study
<i>KCNK3</i>	AR	FPAH	c.316G>C	p.Gly106Arg	chr2:26950567	Probably damaging (P = 1)	DC (0.999)	Damaging	DC (RI = 9)	0	0	0		Pathogenic	This study

AD, autosomal dominant inheritance; AR, autosomal recessive inheritance; DC, disease causing; Dup*, duplication c.653_676dupATAAAGGCTCCTTGATGAGCG; FPAH, familial pulmonary arterial hypertension; IPAH, idiopathic pulmonary arterial hypertension; N/A, not applicable; RI, confidence scale; SIFT, Sorting Intolerant from Tolerant.

Various predictors of pathogenicity with the following scales were applied: Polyphen-2 (its scale ranges from 0 to 1: values closer to 1 have a higher probability of being classified as pathogenic ["damaging" in the Table]); MutationTaster (its scale also ranges from 0 to 1 and values close to 1 are correlated with a higher possibility of pathogenicity); SIFT (this program classifies variants as "damaging" if they are possibly pathogenic and "tolerated" if they are benign); SNPs&GO (it calculates the possibility of pathogenicity with a confidence scale of prediction ranging from 1 to 9, with 1 indicating lowest confidence and 9 indicating maximum confidence). In addition, these variants were analyzed in various control populations, as shown in the Table: EVS (Exome Variant Server), 1000G (1000 Genomes database), and ExAc (Exome Aggregation Consortium). Values equal to 0 indicate that no clear change is found in that database; for those that do show a change, the allelic content is shown with respect to the total.

Transcript used to analyze *TBX4*: ENST00000240335. Transcript used to analyze *BMPR2*: ENST00000374580. Transcript used to analyze *KCNK3*: ENST00000302909.

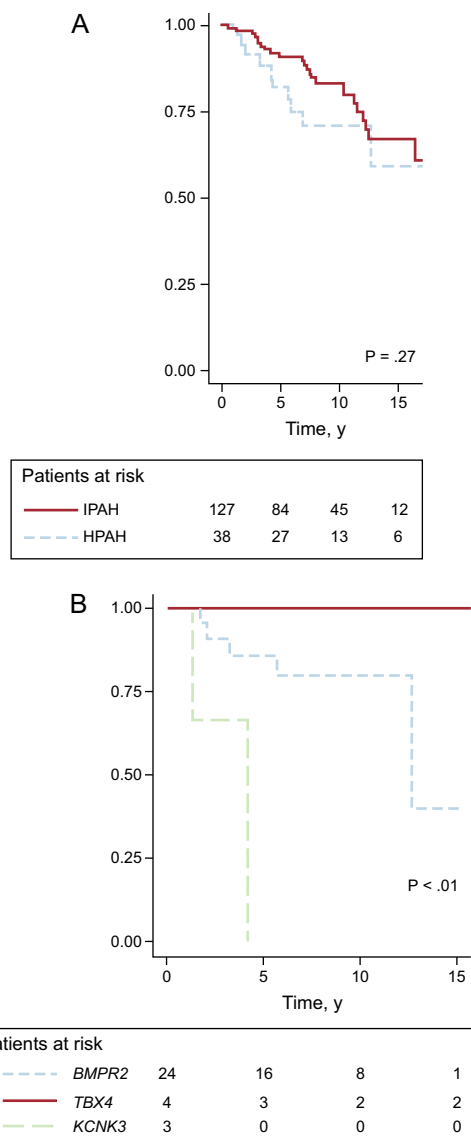


Figure. Kaplan-Meier survival curves. A: IPAH vs HPAH. B: HPAH with a *BMPR2*, *KCNK3*, or *TBX4* mutation. HPAH, hereditary pulmonary arterial hypertension; IPAH, idiopathic pulmonary arterial hypertension.

Table 4
Cox Univariate Analysis

	HR (95%CI)	P
6MWT, 30 m	0.88 (0.80-0.98)	.024
NYHA at diagnosis	1.68 (0.94-2.99)	.079
Male sex	2.55 (1.27-5.15)	.009
PVR	1.05 (1.00-1.10)	.029
Hereditary disease	1.50 (0.71-3.16)	.282
Hereditary disease · male sex	1.58 (1.02-2.45)	.04
Hereditary disease · RAP (5 mmHg)	1.28 (1.05-1.56)	.013
Hereditary disease · NYHA	1.27 (1.03-1.59)	.026
Hereditary disease · PVR	1.06 (1.01-1.05)	.007

6MWT, 6-minute walk test; 95%CI, 95% confidence interval; HR, hazard ratio; NYHA, New York Heart Association; PVR, pulmonary vascular resistance; RAP, right atrial pressure.

Table 5
Cox Multivariate Analysis

	HR (95%CI)	P
6MWT (30 m)	0.81 (0.69-0.96)	.013
Male sex	7.90 (1.12-13.5)	.041
Hereditary disease · male sex	0.26 (0.03-2.15)	.214
Hereditary disease · NYHA	3.50 (1.09-11.18)	.034

6MWT, 6-minute walk test; 95%CI, 95% confidence interval; HR: hazard ratio; NYHA, New York Heart Association.

hereditary forms registered with REHAP until November 2014¹ and 49% of patients treated in 3 referral centers. Mutations in *BMPR2* were found in 50% of the hereditary forms and in 9% of the idiopathic forms of PAH. This rate is lower than the previously reported 75% and 25% for HPAH and IPAH respectively.^{2,4,5,7,12} Inclusion of the *TBX4* and *KCNK3* mutations increased the percentage of mutation carriers to 68.1% and 11.1%, respectively, approaching the data from other groups.¹² This could indicate the presence of a different genetic background in the Spanish population, because the total percentage of patients with mutations was similar to that of other populations but showed a distinct distribution of the affected genes.^{4,7,12,19,22} However, more extensive studies are required to confirm this hypothesis.

Our work describes the phenotype associated with each type of *BMPR2* alteration, as well as the lesser known forms associated with the *KCNK3* and *TBX4* genes. Analysis of our data revealed a more aggressive profile of the forms associated with *KCNK3* vs the more benign behavior of *TBX4*, with an intermediate clinical profile for *BMPR2*. However, similar to previous reports,¹² there was no difference in survival between the hereditary and idiopathic forms. One of the most important findings of this study is the marked prognostic impact of the hereditary forms on the diagnosis of an advanced functional class, highlighting the particular importance of an early diagnosis in this subgroup of patients.

Hereditary Pulmonary Arterial Hypertension vs Idiopathic Pulmonary Arterial Hypertension

In our series, the clinical profile of hereditary forms as a whole was similar to that associated with *BMPR2*.^{4,7,9,12,19} Notably, in 31.81% of patients with HPAH, the genetic study failed to identify the causative mutation; this percentage is higher than in previous reports.^{2,3}

Mutations in *BMPR2*

Of the 19 mutations identified in *BMPR2*, 42% were missense mutations, a higher rate than previously reported.⁴ Of these, 11 were novel, showing the complexity of this gene, which continues to show new alterations^{5,20} despite having been widely studied. Although these changes were distributed throughout the gene and affected various protein domains, 8 of them (42%) were located in exon 2, which was a much higher frequency than previously described.⁴ This finding could indicate the presence of a mutation “hot spot” in this exon, at least in the Spanish population.

The identification of the c.653_676dupATAAAGGCTCTTGGAT-GAGCG mutation, a duplication of 22 base pairs, is notable because this type of change has not previously been linked to PAH development. This mutation was characterized by a higher penetrance (50.0% vs 23.5%), a novel finding with possible future implications.

The previous findings on the phenotype associated with *BMPR2* were confirmed in our series (Table 2),^{4–9,20} except that there was a lower proportion of women with the hereditary form of the

disease, another novel finding. The “respiratory advantage” of the forms associated with *BMPR2* described by Girerd^{23,24} was confirmed, absent from the idiopathic forms and the other hereditary forms. This finding could reflect a pathophysiological process distinct at the pulmonary vascular level related to the *BMPR2*/Smad pathway. There were no significant differences in the phenotype according to the type of *BMPR2* mutation, in contrast to the findings of other studies.⁸

Mutations in *KCNK3*

So far, 9 cases of PAH have been linked to *KCNK3*: 6 in the series of Ma et al.¹³ and 3 in our series, with 2 novel pathogenic variants. The identification of further mutations in *KCNK3* is expected, given that the gene has only relatively recently been linked to PAH. Our group has described for the first time a homozygous mutation in *KCNK3* (p.Gly106Arg) in a patient with consanguineous parents and an aggressive form of the disease; the mother is a heterozygous carrier of this mutation. Although further confirmatory studies are required, the presence of both mutated alleles in the index case could explain the aggressive symptoms.

Similar to the work of Ma et al.,¹³ our study suggests the presence of a more aggressive phenotype of the forms associated with *KCNK3*, even if they share certain characteristics with the forms associated with *BMPR2*, such as autosomal dominant inheritance, incomplete penetrance, and predominantly adult onset. Various experimental approaches are being attempted to reestablish the functioning of this channel,^{25,26} possibly opening a new line of treatment for these patients.

Mutations in *TBX4*

Besides our current series with 4 patients with pathogenic mutations in *TBX4*, the only other known patients with *TBX4* mutations are the 7 patients reported by Kerstjens-Frederikse et al.¹⁴ Notably, all of our patients with childhood-onset PAH showed changes in exon 8, whereas the patients with adult-onset PAH had mutations in exon 3. This phenomenon was not seen in the series of Kerstjens-Frederikse et al.,¹⁴ whose patients with childhood-onset PAH showed variations in either of the 2 exons.

The phenotype of this subgroup of patients has been poorly described, although it has been suggested that this form shows predominantly childhood onset and lower aggressiveness and is often associated with small patella syndrome. However, none of our patients met the diagnostic criteria for this skeletal dysplasia. Our results support these findings, with no death or transplant event after a mean follow-up of 21.75 years, despite the baseline hemodynamic severity. Thus, PAH associated with mutations in *TBX4* could represent the most benign form of this disease, although further studies are required to confirm this hypothesis.

Analysis of Prognostic Factors

In the population with IPAH, univariate analysis showed a prognostic impact of the classical prognostic factors derived from population registries, such as male sex, 6-minute walking distance, and arterial pulmonary vascular resistance. These results are similar to those of previous reports,^{27,28} even if the impact of hereditary disease and the baseline NYHA functional class were not significant, in contrast to previous findings (Table 4)^{12,27,28,95,145} of the [supplementary material](#). Only the 6-minute walking distance and male sex were still significant in the multivariate analysis. In HPAH patients, male sex and the classical prognostic parameters, related to advanced stages of the disease (right atrial pressure, elevated vascular resistance, and advanced functional class), also had a negative impact in the univariate analysis, although only the

functional class was still significant in the multivariate analysis of this subgroup. Thus, NYHA functional class III or IV in the HPAH subgroup was related to a 3.5 times higher risk of placement on the lung transplant list or death (Table 5), a novel finding indicating the importance of an early diagnosis.

Familial Impact

We obtained a significant percentage of negative results in the genetic and echocardiographic screening of the family members, as published by other groups.²⁸ However, due to the prognostic impact of early diagnosis, particularly in the hereditary forms, appropriate screening of family members is vital to detect asymptomatic carriers at an early stage. Thus, of particular interest is the development of follow-up programs of healthy carriers, a field being intensively investigated.^{28–30}

Regarding the penetrance of the alterations described, incomplete penetrance with considerable interfamily variability was observed in the 3 genes studied in our population. This finding highlights the marked differences according to the type of mutation in the forms associated with *BMPR2*, even if the global penetrance of *BMPR2* in our series is almost identical to that of previous findings.^{6,19} Our group is the first to describe the penetrance associated with mutations in *TBX4* and further studies are required to confirm our results.

Limitations

Although the present study has analyzed the largest Spanish cohort of patients with PAH, our findings should be interpreted with caution, largely because both prevalent and incident cases were included, which might have caused a significant dispersion in the date of the diagnosis with a possible underlying survival bias. In addition, just 3 of the genes related to the development of the disease were studied, including *BMPR2*, the main gene linked to the disease, and the many other genes linked to the disease should be included in future studies.^{13,15,16} The categorization of the pathogenicity of the mutations found was an estimate based on diverse clinical and genetic/molecular parameters. Thus, for their confirmation, further work is required that demonstrates cosegregation of the mutation with the phenotype and/or involves functional studies.

CONCLUSIONS

The present study has identified a distinguishing feature in the Spanish population with PAH with respect to other described populations, with a lower percentage of *BMPR2*-associated forms and the presence of a possible novel hot spot in exon 2 of this gene. In addition, the findings from our population suggest that the forms associated with *TBX4* might show a more benign presentation, in contrast to the more aggressive phenotype of the forms associated with *KCNK3*. No differences were seen in prognosis between the idiopathic and hereditary forms, and our study also showed the significance of the classical prognostic factors of PAH. Our results also highlight the considerable prognostic impact of early diagnosis in the hereditary forms of the disease with the consequent particular importance of adequate screening of this patient subgroup. New studies are required to confirm these findings in order to incorporate the phenotypic and prognostic nuances of each genetic alteration into daily clinical practice.

ACKNOWLEDGMENTS

We would like to thank the Spanish Pulmonary Arterial Hypertension Association, Actelion, Air Liquide Foundation, the

Biobanc tissue bank of the *Hospital Clínic de Barcelona*, and our patients for making this study possible. In addition, we thank the Exome Aggregation Consortium and the NHLBI (National Heart, Lung, and Blood Institute) GO Exome Sequencing Project and their ongoing projects (Lung GO Sequencing Project [HL-102923], WHI Sequencing Project [HL-102924], Broad GO Sequencing Project [HL-102925], Seattle GO Sequencing Project [HL-102926], and Heart GO Sequencing Project [HL-103010]) for their invaluable contributions to the scientific community.

FUNDING

This project was partially funded by the Cardiovascular Investigation Network of the *Instituto de Salud Carlos III* of Madrid (RD06/0003/0012), as well as by unconditional grants from the Spanish Pulmonary Arterial Hypertension Association, Actelion, and Foundation Air Liquide.

CONFLICTS OF INTEREST

None declared.

SUPPLEMENTARY MATERIAL



Supplementary material associated with this article can be found in the online version available at [doi:10.1016/j.rec.2016.03.029](https://doi.org/10.1016/j.rec.2016.03.029).

WHAT IS KNOWN ABOUT THE TOPIC?

- For years, *BMPR2* has been the main gene associated with PAH development, present in 75% of hereditary forms and 25% of idiopathic forms. Advances in genetics, such as massively parallel sequencing, have enabled the discovery of numerous other genes related to this disease, such as *KCNK3* and *TBX4*. According to the published data, the forms associated with *BMPR2* can be characterized by a younger age at diagnosis, greater hemodynamic severity, and reduced response to vasodilator testing, without evidence of prognostic differences. However, the phenotype and prognosis associated with *TBX4* and *KCNK3* have been scarcely described.

WHAT DOES THIS STUDY ADD?

- This work involves the largest series of patients with idiopathic and hereditary PAH genetically studied in Spain, as well as the largest study of family members published in Spain in this field. We analyzed the prevalence and genotype-phenotype correlations of mutations in *BMPR2*, *TBX4*, and *KCNK3* in Spain. This is the first study to describe PAH caused by a duplication in *BMPR2* and the first patients with a *TBX4* mutation without associated bone disease. Finally, we observed a marked prognostic impact of late diagnosis in the hereditary forms, an important finding underscoring the value of early diagnosis in this patient subgroup.

REFERENCES

1. Escribano-Subías P, Blanco I, López-Meseguer M, Jiménez López-Guarch C, Román A, Morales P, et al. Survival in pulmonary hypertension in Spain: insights from the Spanish registry. *Eur Respir J*. 2012;40:596–603.
2. Thomson JR, Machado RD, Pauciulo MW, Morgan NV, Humbert M, Elliott GC, et al. Sporadic primary pulmonary hypertension is associated with germline mutations of the gene encoding BMPR-II, a receptor member of the TGF-beta family. *J Med Genet*. 2000;37:741–5.
3. Cogan JD, Pauciulo MW, Batchman AP, Prince MA, Robbins IM, Hedges LK, et al. High frequency of BMPR2 exonic deletions/duplications in familial pulmonary arterial hypertension. *Am J Respir Crit Care Med*. 2006;174:590–8.
4. Machado R, Eickelberg O, Elliott G, Geraci MW, Hanaoka M, Loyd JE, et al. Genetics and genomics of pulmonary arterial hypertension. *J Am Coll Cardiol*. 2009;54:S32–42.
5. Momose Y, Aimi Y, Hirayama T, Kataoka M, Ono M, Yoshino H, et al. De novo mutations in the BMPR2 gene in patients with heritable pulmonary arterial hypertension. *Ann Hum Genet*. 2015;79:85–91.
6. White J, Morrell NW. Understanding the low penetrance of bone morphogenetic protein receptor 2 gene mutations. Another needle in the haystack *Circulation*. 2012;126:1818–20.
7. Austin ED, Joyd JE. Heritable forms of pulmonary arterial hypertension. *Semin Respir Crit Care Med*. 2013;34:568–80.
8. Austin E, Phillips JA, Cogan JD, Hamid R, Yu C, Stanton KC, et al. Truncating and missense BMPR2 mutations differentially affect the severity of heritable pulmonary arterial hypertension. *Respir Res*. 2009;10:1–9.
9. Girerd B, Montani D, Eyries M, Yaici A, Sztrymf B, Coulet F, et al. Absence of influence of gender and BMPR2 mutation type on clinical phenotypes of pulmonary arterial hypertension. *Respir Res*. 2010;11:73.
10. Mair KM, Yang XD, Long L, White K, Wallace E, Ewart MA, et al. Sex affects bone morphogenetic protein type II receptor signalling in pulmonary artery smooth muscle cells. *Am J Respir Crit Care Med*. 2015;191:693–703.
11. John A, Kizhakkedath P, Al-Gazali L, Ali BR. Defective cellular trafficking of the bone morphogenetic protein receptor type II by mutations underlying familial pulmonary arterial hypertension. *Gene*. 2015;561:148–56.
12. Sztrymf B, Coulet F, Girerd B, Yaici A, Jais X, Sitbon O, et al. Clinical outcomes of pulmonary arterial hypertension in carriers of BMPR2 mutation. *Am J Respir Crit Care Med*. 2008;181:851–61.
13. Ma L, Roman-Campos D, Austin ED, Eyries M, Sampson KS, Soubrier F, et al. A novel channelopathy in pulmonary arterial hypertension. *N Engl J Med*. 2013;369:351–61.
14. Kerstjens-Frederikse WS, Bongers EM, Roofthoof MT, Leter EM, Douwes JM, Van Dijk A, et al. TBX4 mutations (small patella syndrome) are associated with childhood-onset pulmonary arterial hypertension. *J Med Genet*. 2013;50:500–6.
15. Austin ED, Ma L, LeDuc C, Berman Rosenzweig E, Borczuk A, Phillips 3rd JA, et al. Whole exome sequencing to identify a novel gene (caveolin-1) associated with human pulmonary arterial hypertension. *Circ Cardiovasc Genet*. 2012;5:336–43.
16. Chida A, Shintani M, Matsushita Y, Sato H, Eitoku T, Nakayama T, et al. Mutations of NOTCH3 in childhood pulmonary arterial hypertension. *Mol Genet Genomic Med*. 2014;2:229–39.
17. Eyries M, Montani D, Girerd B, Perret C, Leroy A, Lonjou C, et al. EIF2AK4 mutations cause pulmonary veno-occlusive disease, a recessive form of pulmonary hypertension. *Nature Genetics*. 2014;4:65–9.
18. Tenorio J, Navas P, Barrios E, Fernández L, Nevado J, Quezada CA, et al. A founder EIF2AK4 mutation causes an aggressive form of pulmonary arterial hypertension in Iberian Gypsies. *Clin Genet*. 2015;88:579–83.
19. Sztrymf B, Yaici A, Girerd B, Humbert M. Genes and Pulmonary arterial hypertension. *Respiration*. 2007;74:123–32.
20. Pousada G, Balóira A, Vilarinho C, Cifrián JM, Valverde D. Novel mutations in BMPR2, ACVRL1 and KCNA5 genes and hemodynamic parameters in patients with pulmonary arterial hypertension. *PLoS One*. 2014;6:1–10.
21. Galé N, Hoeper M, Humbert M, Torbicki A, Vachiery JL, Barbera JA, et al. Guidelines for the diagnosis and treatment of pulmonary hypertension. *Eur Heart J*. 2009;30:2493–537.
22. McGoon M, Benza RL, Escribano-Subías P, Jiang X, Miller DP, Peacock AJ, et al. Pulmonary arterial hypertension epidemiology and registries. *J Am Coll Cardiol*. 2013;62 Suppl 25:D51–9.
23. Trip P, Girerd B, Bogaard HJ, De Man FS, Boonstra A, Garcia G, et al. Diffusion capacity and BMPR2 mutations in pulmonary arterial hypertension. *Eur Respir J*. 2014;43:1195–8.
24. Trip P, Nossent EJ, De Man FS, Van den Berk, Boonstra A, Groepenhoff H, et al. Severely reduced diffusion capacity in idiopathic pulmonary arterial hypertension patient characteristics and treatment responses. *Eur Respir J*. 2013;42:1575–85.
25. Humbert M, Lau EM, Montani D, Jais X, Sitbon O, Simonneau G. Advances in therapeutic interventions for patients with arterial hypertension. *Circulation*. 2014;130:2189–208.
26. Girerd B, Perros F, Antigny F, Humbert M, Montani D. KCNK3: new gene target for pulmonary hypertension? *Expert Rev Respir Med*. 2014;8:385–7.

27. Benza M, Miller D, Frost A, Frantz R, Foreman A, Badesch D, et al. The REVEAL Registry risk score calculator in patients newly diagnosed with pulmonary arterial hypertension. *Chest*. 2012;141:354–62.
28. Soubrier F, Chung WK, Machado R, Grünig E, Aldred M, Geraci M, et al. Genetics and genomics of pulmonary arterial hypertension. *J Am Coll Cardiol*. 2013;62 Suppl 25:D13–21.
29. Grünig E, Weissmann S, Ehlken N, Fijalkowska A, Fischer C, Fourme T, et al. Stress Doppler echocardiography in relatives of patients with idiopathic and familial pulmonary arterial hypertension. *Circulation*. 2009;119:1747–57.
30. Humbert M, Coghlan JG, Khanna D. Early detection and management of pulmonary arterial hypertension. *Eur Respir Rev*. 2012;21:126. 306–12.