

tion remains the most likely hypothesis explaining the improvement of the left ventricular systolic function.

Gioel Gabrio Secco,* Paolo Nicola Marino, Luca Venegoni, and Giuseppe De Luca

Dipartimento di Cardiologia, Ospedale "Maggiore della Carità", Università degli Studi del Piemonte Orientale, Novara, Italy

*Corresponding author:

E-mail address: gioel.gabrio.secco@gmail.com (G.G. Secco).

Available online 5 April 2011

REFERENCES

1. Goldberg S, Grossman W, Markis JE, Cohen MV, Baltaxe HA, Levin DC. Total occlusion of the left main coronary artery - a clinical, hemodynamic and angiographic profile. *Am J Med.* 1978;64:3–8.
2. Sugishita K, Shimizu T, Kinugawa K, Harada K, Ikenouchi H, Matsui H, et al. Chronic total occlusion of the left main coronary artery. *Intern Med.* 1997;36:471–8.
3. Koster NK, White M. Chronic effort-induced angina as presentation of a totally occluded left main coronary artery: a case report and review. *Angiology.* 2009;60:382–4.
4. Zimmern SH, Rogers WJ, Bream PR, Chaitman BR, Bourassa MG, Davis KA, et al. Total occlusion of the left main coronary artery: the Coronary Artery Surgery Study (CASS) experience. *Am J Cardiol.* 1982;49:2003–10.
5. Shahian DM, Butterly JR, Malacoff RF. Total obstruction of the left main coronary artery. *Ann Thorac Surg.* 1988;46:317.

doi:10.1016/j.rec.2010.10.031

Polymorphic Ventricular Tachycardia After Atropine Use During Stress Echocardiography

Taquicardia ventricular polimórfica tras la administración de atropina durante una ecocardiografía de esfuerzo

To the Editor,

Stress echocardiography offers diagnostic capacity for the detection of myocardial ischemia that is superior to stress testing with an electrocardiogram (ECG), irrespective of patient age or sex,¹

and its use is preferable to dobutamine stress echocardiography in subjects able to exercise.² The test is indicated in the diagnosis of ischemic heart disease in patients with suspected coronary disease or pathological baseline ECG and inconclusive conventional stress testing; in this type of patient, the test provides relevant prognostic information to predict mortality and major cardiovascular events.³

We describe a 59-year-old man with hypertension as the only cardiovascular risk factor. Some years previously, he had experienced an angina-like episode; however, the stress test was negative for ischemia and he was asymptomatic afterwards. Recently, the patient was again referred to our hospital for stress echocardiography following an episode of chest pain at rest. An

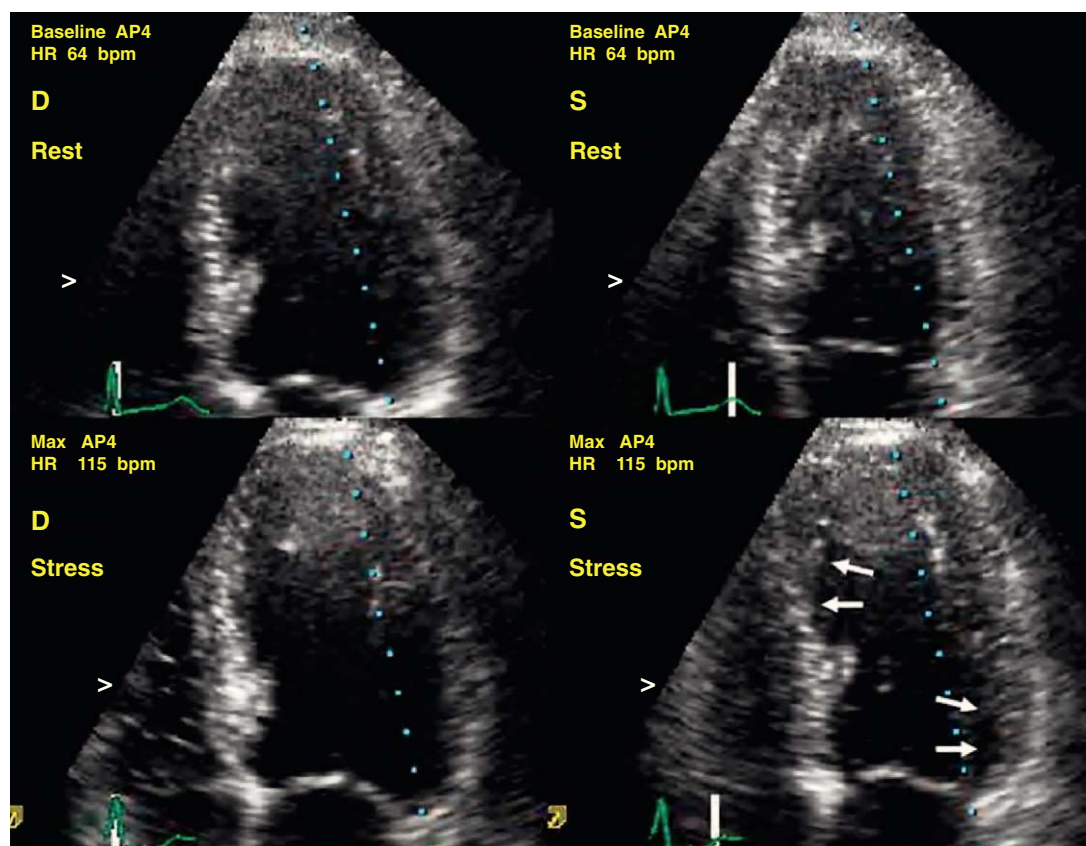


Figure 1. Stress echocardiography. Development of apical septal, lateral basal, and posterior hypokinesia during maximum exertion following the administration of intravenous atropine (arrows). bpm, beats per minute; D, end-diastolic; HR, heart rate; S, end-systolic.

echocardiographic study at rest showed no regional contractility abnormalities.

During the cycle-ergometer test without beta blockers, the patient completed World Health Organization Stage V (125 W) but did not achieve submaximal heart rate and, therefore, 1 mg of intravenous atropine was administered. At that point he developed apical septal, lateral basal, and posterior hypokinesis (Fig. 1) and symptoms of angina with concomitant vegetative syndrome. The surface electrocardiogram showed ST-segment depression >1 mm in leads I, aVL, and V3-V4 and development of bifascicular block (complete right bundle-branch block, bundle of His, and left anterior bundle-branch block), followed by runs of polymorphic ventricular tachycardia (Fig. 2). Once intravenous atenolol was administered, the ECG abnormalities and regional contractility returned to normal, and the patient remained asymptomatic. The test was considered positive, and the patient was admitted to the cardiology department to investigate potential coronary disease.

Although the enzyme panel on admission showed a maximum troponin I peak of 0.73 ng/mL (normal values, <0.3 ng/mL), the

hemodynamic study found coronary arteries without significant stenosis. A subsequent cardiac magnetic resonance showed no significant findings. The patient was discharged with follow-up by the outpatient service and remained asymptomatic in the following months.

The use of atropine during pharmacological stress echocardiography to achieve submaximal heart rate is a regular practice that is described in the clinical practice guidelines and improves test sensitivity. Nonetheless, standard use during stress echocardiography is not described in the guidelines, and the potentially serious adverse effects that result are not reported in the literature, despite routine use in some echocardiography laboratories. Although the safety of the various stress echocardiography modalities has been previously evaluated in our setting,⁴ with similar percentages of complications as in previous series,⁵ including ventricular arrhythmia (<0.5%), these studies do not include the practice of mixed protocols such as the one reflected in our case. Moreover, drugs administered during physiological stress to enhance test sensitivity and increase the heart rate may

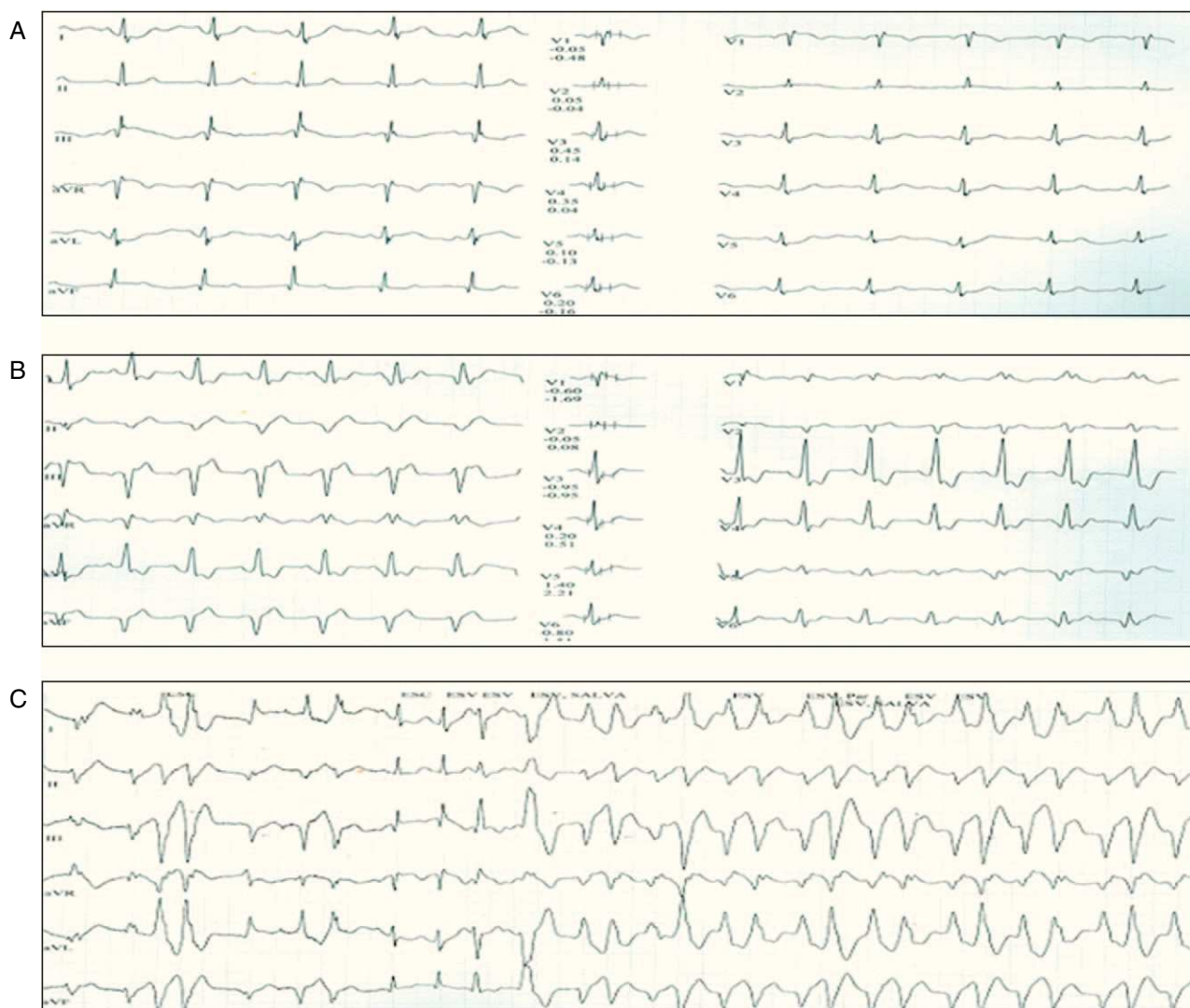


Figure 2. A, electrocardiogram at rest. B, electrocardiogram following atropine administration in World Health Organization Stage 5: ST-segment depression >1 mm in leads I, aVL, and V3-V4 and development of bifascicular block (complete right bundle-branch block, bundle of His, and left anterior bundle-branch block). C, runs of polymorphic ventricular tachycardia.

conversely reduce specificity, as observed after coronary angiography.

The complication described in the present case illustrates the risk of triggering ventricular arrhythmia during maximum stress caused by administering atropine, and could raise questions about routine use in this clinical context.

Óscar Fabregat-Andrés, Mónica Ferrando, Leandro Pérez-Boscá, and Rafael Payá*

Servicio de Cardiología, Consorcio Hospital General Universitario de Valencia, Valencia, Spain

*Corresponding author:

E-mail address: paya_rafser@gva.es (R. Payá).

Available online 12 March 2011

REFERENCES

1. Sicari R, Nihoyannopoulos P, Evangelista A, Kasprzak J, Lancelotti P, Poldermans D, et al. EAE Guidelines: Stress echocardiography expert consensus statement. *Eur J Echocardiogr*. 2008;9:415–37.
2. Pellikka PA, Nagueh S, Elhendy AA, Kuehl CA, Sawada SG. American Society of Echocardiography Recommendations for Performance, Interpretation and Application of Stress Echocardiography. *J Am Soc Echocardiogr*. 2007;20:1021–41.
3. Bouzas-Mosquera A, Peteiro J, Álvarez-García N, Broullón FJ, Mosquera VX, García-Bueno L, et al. Prediction of mortality and major cardiac events by exercise echocardiography in patients with normal exercise electrocardiographic testing. *J Am Coll Cardiol*. 2009;53:1981–90.
4. Rodríguez-García MA, Iglesias-Garriz I, Corral-Fernández F, Garrote-Coloma C, Alonso-Orcajo N, Branco L, et al. Evaluación de la seguridad de la ecocardiografía de estrés en España y Portugal. *Rev Esp Cardiol*. 2001;54:941–8.
5. Secknus MA, Marwick TH. Evolution of dobutamine echocardiography protocols and indications: safety and side effects in 3011 studies over 5 years. *J Am Coll Cardiol*. 1997;29:1234–12340.

doi:10.1016/j.rec.2010.10.022

Subacute Right Ventricular Perforation After Permanent Pacemaker Implant: Usefulness of Computed Tomography

Perforación subaguda del ventrículo derecho tras implante de marcapasos definitivo: utilidad de la tomografía computarizada

To the Editor,

Cardiac perforation is rare after implantation of pacing or defibrillation wires and mainly occurs when the leads are inserted

into the myocardial wall. Perforation is increasingly common, is usually associated with the use of small-caliber active fixation leads, and can occur beyond the first few days (subacute) or even more than a month after implantation (late).¹ The most common clinical manifestations are cardiac tamponade, hemopericardium, pneumothorax or hemothorax, or diaphragmatic or pectoral stimulation, always accompanied by data indicating lead malfunction. Radiology and echocardiography can confirm the perforation by revealing progression of the lead beyond the cardiac silhouette or indirectly visualizing the presence of pericardial or pleural effusion. On occasion, the clinical presenta-

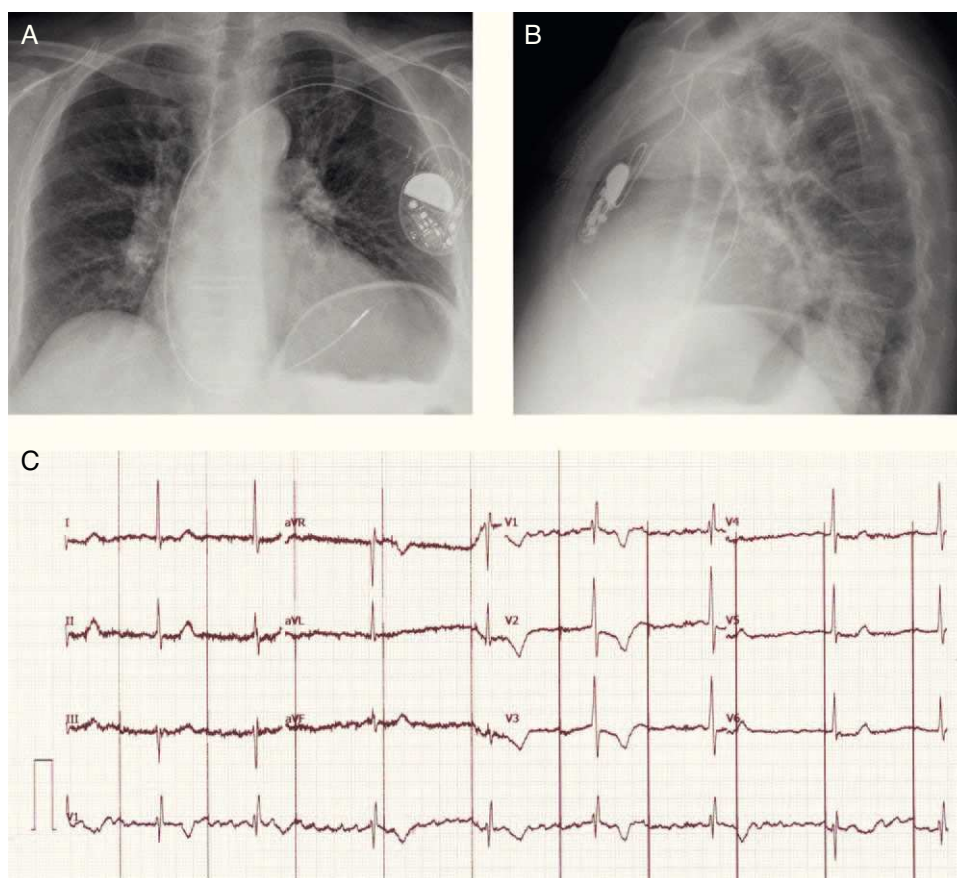


Figure 1. Chest X-ray after implantation in posteroanterior position (A) and lateral position (B). C: 12-lead electrocardiogram at the onset of chest pain, showing failure of pacemaker capture and sensing (asynchronous at 60 bpm with no ventricular capture).