

The involvement of the renin-angiotensin system gene polymorphisms in coronary heart disease

Enrique Hernández Ortega^{a,b}, Alfonso Medina Fernández-Aceituno^{a,b}, Francisco J. Rodríguez Esparragón^a, Octavio Hernández Perera^a, Francisco Melián Nuez^b, Antonio Delgado Espinosa^b, Dolores Fíuza Pérez^a, Aránzazu Anabitarte Prieto^a y José C. Rodríguez Pérez^{a,c}

^aUnidad de Investigación. ^bServicios de Cardiología y ^cNefrología. Hospital Dr. Negrín de Gran Canaria. Las Palmas de Gran Canaria.

Introduction and objectives. Previous studies angiotensin-converting enzyme gene insertion/deletion polymorphism ACE (I/D), angiotensinogen gene polymorphism, and angiotensin II AT1 receptor polymorphism in relation to coronary heart disease controversial results. This study was designed to analyze the association between these gene polymorphisms and the first coronary event in individuals residing on Grand Canary Island, Spain.

Patients and method. Case-control study. Case subjects (n=304) were recruited at the first coronary event; age-matched controls (n=315) were randomly selected from the Grand Canary population. Participants were examined for the usual risk factors. Blood samples were obtained for biochemical analyses and DNA extraction. Genotyping was performed by PCR and restriction analysis.

Results. Neither ACE (I/D) nor AT1 receptor polymorphism was associated with coronary heart disease, whereas the frequency distribution of AGT M235T genotypes among patients and control subjects (TT: 29% and 19%; MT: 48% and 50%; MM: 22% and 31%, respectively) was statistically different (P=.003). Multiple logistic regression analysis identified the TT genotype of the angiotensinogen gene (OR=1.9; 95% CI 1.1-3.4), diabetes (OR=4.4; 95% CI 2.0-9.4) and hypertension (OR=2.1; 95% CI, 1.3-3.3) as risk factors predicting the coronary event.

Conclusions. Our results provide no evidence of an association between ACE (I/D) or AT1 receptor polymorphism and coronary heart disease. However, homozygosity for the T allele of the angiotensinogen gene, diabetes and hypertension independently place individuals at higher risk of experiencing a coronary event on Grand Canary Island.

Key words: Angiotensinogen. Angiotensin-converting enzyme. Angiotensin II receptor. Coronary heart disease. Genes.

Relevancia de los polimorfismos génicos del sistema renina-angiotensina en la enfermedad coronaria

Introducción y objetivos. Estudios previos sobre la relación de la enfermedad coronaria y el polimorfismo de inserción/delección de la enzima convertidora de la angiotensina (ECA [I/D]), el polimorfismo del gen del angiotensinógeno AGT M235T, o del receptor AT1 de la angiotensina II (A1166C) han demostrado resultados controvertidos. El objetivo de este estudio fue determinar la asociación entre estos polimorfismos génicos y el primer acontecimiento coronario en la población de Gran Canaria.

Pacientes y método. Estudio de casos y controles ajustados según edad. Los casos (n = 304) se seleccionaron al padecer un primer acontecimiento coronario; los controles constituyen una muestra aleatoria poblacional (n = 315). Todos los sujetos fueron evaluados para los factores de riesgo clásicos. Se tomaron muestras sanguíneas para determinaciones analíticas y extracción de ADN. Las genotipificaciones se realizaron por PCR y análisis de restricción.

Resultados. No se encontró asociación entre el polimorfismo ECA (I/D), AT1R (A1166C) y la enfermedad coronaria, mientras que la distribución de frecuencias de los genotipos del angiotensinógeno entre pacientes y controles (TT: 29 y 19%; MT: 48 y 50%; MM: 22 y 31%, respectivamente) resultaron estadísticamente diferentes (p = 0,003). El análisis multivariado identificó como factores predictores de acontecimiento coronario al genotipo TT del gen del angiotensinógeno (OR = 1,9; IC del 95%, 1,1-3,4), la diabetes (OR = 4,4; IC del 95%, 2,0-9,4) y la hipertensión (OR = 2,1; IC del 95%, 1,3-3,3).

Conclusiones. No se ha observado asociación entre el polimorfismo ECA (I/D), AT1R (A1166C) y la enfermedad coronaria. Sin embargo, la homocigosis TT del gen del angiotensinógeno, la diabetes y la hipertensión arterial predisponen de manera independiente a la aparición de un primer acontecimiento coronario en la población canaria.

Palabras clave: Angiotensinógeno. Enzima convertidora de la angiotensina. Receptor de la angiotensina II.

SEE EDITORIAL ON PAGES 89-91

This work was developed as part of Project FIS 96/0662 and partially financed by the Colegio Oficial de Médicos de Las Palmas de Gran Canaria and the Fundación Mapfre-Guanarteme. Part of this study received an award from the Sociedad Española de Cardiología during its 1999 congress.

Correspondence: Dr. J.C. Rodríguez Pérez.

Unidad de Investigación, Hospital de Gran Canaria Dr. Negrín.

Barranco de la Ballena, s/n, 35020 Las Palmas de Gran Canaria, España.

Received 15 February 2001.

Accepted for publication 8 October 2001.

ABBREVIATIONS

AGT: angiotensinogen.
 AT1R: AT1 receptor of angiotensin II
 ACE: angiotensin-converting enzyme
 BMI: body mass index
 OR: odds ratio
 PCR: polymerase chain reaction
 RAAS: renin-angiotensin-aldosterone system

Enfermedad coronaria. Genes.

INTRODUCTION

Cardiovascular diseases—especially coronary artery disease—are the main cause of death in developed countries and their relation with certain risk factors like arterial hypertension, dyslipemia, smoking, or diabetes mellitus is well-known. It also is known that a family history of ischemic heart disease is a powerful independent coronary risk factor; this illustrates the multifactorial nature of the disease, in which environmental factors and genetic factors interact.¹

New molecular biology techniques applied to genetic diagnosis make it possible to study the mechanisms underlying individual and familial predisposition to suffering certain diseases. Specifically, in relation to coronary artery disease, the genetic markers linked to the renin-angiotensin-aldosterone system (RAAS) have received special attention, not only because of their well-known effects on vascular homeostasis,^{2,3} but also the promise of the use of angiotensin-converting enzyme inhibitor (ACEI) to reduce morbidity and mortality in ischemic heart disease.^{4,5}

The findings that relate RAAS genes to ischemic heart disease are recent and several polymorphisms in different genes of this system have been described.⁶⁻⁸ I/D polymorphism of the gene that codes for ACE consists of the presence (I) or absence (D) of 287 base pairs in intron 16 of the gene.⁶ The D allele is accompanied by higher plasma and tissue concentrations of ACE activity than the I allele,^{6,9} which could provide a pathophysiological explanation for the higher incidence of myocardial infarction and coronary artery disease in individuals with the DD genotype.¹⁰ Various studies have tried to confirm these observations, with debatable results.¹¹⁻¹⁴

The angiotensinogen gene, a second component of the RAAS, has been related with the progression of heart disease. A polymorphism in exon 2 of the gene, consisting of the substitution of methionine by treoni-

ne in position 235 of the coded protein (M235T),^{7,15} has been associated with higher angiotensinogen concentrations,^{7,16} higher blood pressure,¹⁷ and even the development of pre-eclampsia.¹⁸ A study made in Spain by our group has reported an association between the TT genotype and increased risk of coronary artery disease, independently of the presence of arterial hypertension.¹⁹

A third component of the RAAS is the gene of the AT1 receptor (*AT1R*) of angiotensin II. Most of the effects of angiotensin II are mediated through *AT1R*.⁸ A polymorphism of receptor AT1 (A1166C) has been identified in region 3' of the gene that corresponds with an A#-?C substitution in messenger RNA. The association between this polymorphism and coronary artery disease has been analyzed by different groups.^{20,21}

In this study we examined the classic risk factors and various gene polymorphisms of the RAAS that may explain the high incidence of coronary artery disease in the Canary Islands.²²

PATIENTS AND METHOD

Subjects

A study was made of cases and controls adjusted for age who met the following requirements: age over 18 years, Canary Island origin (born in the Canary Islands into a family with at least three previous generations of Canary Islanders) and absence of cardiovascular antecedents, contagious infectious diseases, and parenteral drug use.

The cases (n=304; mean age 56±10 years; 237 men) were selected consecutively in 1996-1998 after suffering a first coronary event (angina or acute myocardial infarction), which was diagnosed by clinical and electrocardiographic criteria and confirmed by coronary angiography.

The controls (n=315; mean age 54±10 years; 223 men) were selected from the census lists of different municipalities of Gran Canaria Island and the sample was stratified by a multi-stage conglomerate. In this group, the presence of previous cardiovascular events was excluded by a clinical examination.

All subjects completed a questionnaire with a trained nurse (AAP) that included demographic data: age, place of birth, habitat, hypertension, diabetes mellitus, smoking, alcohol use, physical activity, and use of oral contraceptives or hormonal replacement therapy by women. Blood pressure measurements were made in triplicate using a semiautomatic monitor (Omron Hem 705 CP), which has been homologated and validated by the British Society of Arterial Hypertension.²³ Arterial hypertension was defined as 140/90 mm Hg or more. The body mass index (BMI) was calculated as weight/height² and obesity was defined as a BMI over 26. Smokers were defined as anyone who had smoked

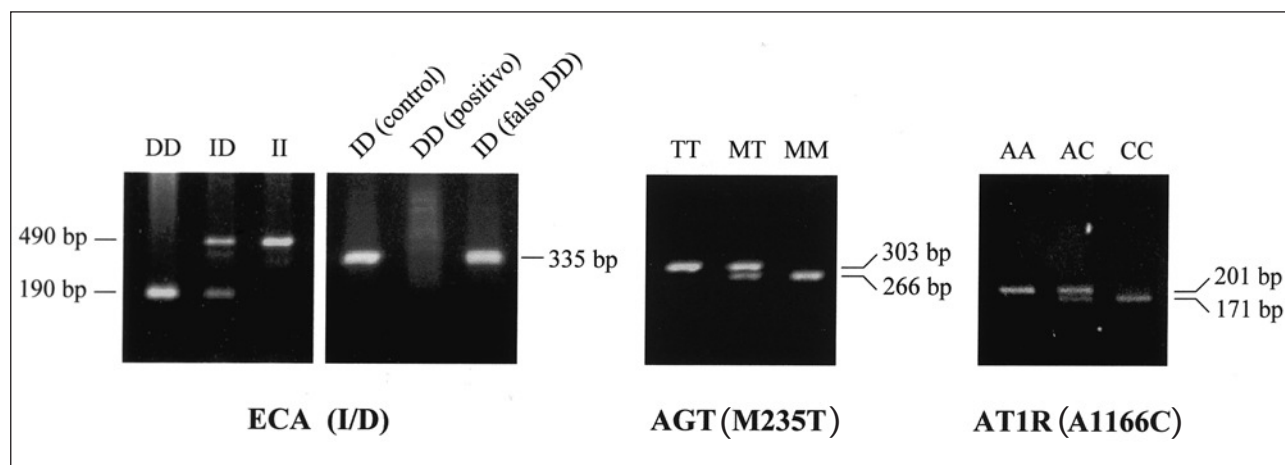


Fig. 1. Visualization of PCR products by ethidium bromide staining according to the genotypes of ACE (I/D), AGT M235T, and AT1R (A1166C) polymorphisms. False DD homozygotes were identified using specific primers for insertion (second panel): an ID control sample (lane 1) and two DD samples, as determined in the first round of PCR (lanes 2 and 3), were submitted to a second amplification cycle. The 335-bp band in lane 3 after reamplification indicates the existence of the I allele (false DD).

in the last year. Several blood samples were obtained, after a 12 h fast, for biochemical determinations and DNA extraction and at least 2 urine samples were obtained for albuminuria determination.

Laboratory methods

Plasma concentrations of glucose, creatinine, total cholesterol, HDL-C, and triglycerides were determined by enzymatic-colorimetric methods. The LDL-C was calculated using the Friedewald formula. Lp(a) was analyzed by immunoturbidimetry (Boehringer, Mannheim). Homocysteine was determined by polarized fluorescence immunoanalysis, which had a variation in the intra-assay coefficient of 1.9% (Abbott, Diagnostic Division). Microalbuminuria was measured by immunoturbidimetric analysis (Boehringer, Mannheim).

The genomic DNA used for the genetic determinations was extracted from leukocytes using a standardized procedure. The I/D genotypes of ACE were determined following the procedure described by Rigat²⁴ in 1992. Briefly, a reaction was made with 10 pmol of each primer in a final volume of 25 μ l. DNA was amplified 30 cycles with denaturation at 94°C for a minute, ringed at 58°C for a minute and extension at 72°C for 2 min. PCR generated a fragment with 190 base pairs (bp) in the case of deletion, and a 490-bp fragment in the case of the insertion.

Since the D allele is amplified in mainly heterozygotic samples,²⁵ each sample of the DD genotype of ACE was reamplified in a second round of PCR with specific primers for insertion.¹³ An amplification protocol described previously²⁶ was used and ID and II samples were used as amplification controls. Our rate of DD false positives was only 1.2% compared with 4-5% described in other published studies.

The M235T polymorphism of AGT was analyzed by the *mismatch* method described previously,¹⁵ with some modification. Genomic DNA was amplified by initial denaturation at 94°C followed by 30 cycles at 94°C for one minute, at 66°C for one minute, and at 72°C for one minute and a final extension at 72°C for 2 min. The 10 μ l of amplified product was digested overnight at 37°C with 0.3 units of *Sfa*NI. A total of 579 subjects for which a serology library and gene library were available were gene typed for the A1166C polymorphism of the *AT1R* gene. Genotypes A1166C in region 3' UTR of gene *AT1R* were determined following the protocol described by Nakachi, et al.²⁷ Amplification yielded a 201-bp product. The mutated product (A1166C) generated 171-bp and 30-bp fragments when cut with *Hae*III. The products were developed with an ethidium bromide stain after electrophoretic fractionation through agarose gels (Figure 1).

Statistical analysis

The SPSS statistical program version 8.0 for Windows was used for data analysis. Differences were considered statistically significant if $P < .05$. All continuous variables were expressed as mean \pm standard deviation. The Student t test was applied to independent samples to compare means between two groups and χ^2 analysis was used to compare differences in the distribution of genotypes and other coronary risk factors, including sex, arterial hypertension, diabetes mellitus, smoking and alcohol use, and habitat and sedentary life style between patients and the control group.

The Kolmogorov-Smirnov test was used to estimate the normal distribution of variables. The odds ratio (OR) and 95% confidence intervals (CI) were calculated to estimate the risk of coronary artery disease associated with categorized continuous variables (age < 50

TABLE 1. Population characteristics

	Controls (n = 315)	Cases (n = 304)	P
Age (years)	54 ± 10	56 ± 10	.06
Urban habitat	182 (81%)	209 (88%)	.005
Smoking habit	86 (27%)	152 (51%)	< .001
Alcohol (g/day)	11 ± 19	16 ± 27	.007
Arterial hypertension	103 (33%)	147 (49%)	.001
Systolic blood pressure (mm Hg)	135 ± 26	135 ± 24	.95
Diastolic blood pressure (mm Hg)	84 ± 12	76 ± 13	< .001
Diabetes mellitus	36 (11.5%)	103 (34%)	< .001
Glycemia (mg/dl)	105 ± 27	112 ± 50	.03
BMI (kg/m ²)	27.3 ± 3.8	27.2 ± 3.7	.8
Total cholesterol (mg/dl)	232 ± 40	198 ± 43	< .001
LDL (mg/dl)	151 ± 36	138 ± 37	< .001
HDL-C (mg/dl)	50 ± 13	35 ± 9	< .001
Total cholesterol/HDL-C	4.9 ± 1.4	5.9 ± 1.7	< .001
Triglycerides (mg/dl)	151 ± 77	124 ± 67	< .001
Lp(a) (mg/dl)	36 ± 43	54 ± 68	< .001
Homocysteine (mol/l)	15.7 ± 7.3	14.6 ± 5.2	.03
Microalbuminuria (mg/g creatinine)	27 ± 135	43 ± 150	.17
Creatinine (mg/dl)	0.87 ± 0.31	0.81 ± 0.22	.01
BMI: body mass index			

$\chi^2 = V$; squared

or =50 years; BMI <26 or = 6; alcohol use <30 or = 30 g/day; systolic blood pressure <40 or = 140 mm Hg; diastolic blood pressure <90 or = 90 mm Hg; total cholesterol = 200 or >200 mg/dl; HDL-C = 65 or >65 mg/dl; LDL-C = 160 or >160 mg/dl; triglycerides = 150 or >150 mg/dl; total cholesterol/HDL-C ratio = 5 or >; Lp(a) = 30 or >30 mg/dl; glycemia = 126 or >126 mg/dl; creatinine <1 or = 1 mg/dl; homocysteine = 15 or >15 μ mol/l, and microalbuminuria <30 or = 30 mg/g creatinine) and for discrete variables: diabetes yes/no, rural/urban habitat, hypertension yes/no, sex, smoking yes/no and sedentary life style yes/no. The Hardy-Weinberg equilibrium for the frequencies of ACE, AGT and AT1R genotypes was tested by χ^2 analysis. The OR and 95% CI were calculated to estimate the relative risk of coronary artery disease associated with the ACE (I/D), AGT M235T, and AT1R (A1166C) polymorphisms. Finally, the independent variables with predictive capacity for coronary artery disease were determined by logistic regression analysis.

RESULTS

Univariate analysis

Study of patients, life style, and cardiovascular risk factors

This study included 619 patients selected at random (460 men and 159 women), ranging in age from 25 to 80 years. All the patients completed the study protocol. In Table 1 the main characteristics of the population,

separated by cases and controls, are described. Male sex, urban habitat, smoking, arterial hypertension, and diabetes were significantly more frequent factors in the group with coronary artery disease. The control group had significantly higher HDL-C values. The groups did not differ significantly in age, BMI, systolic blood pressure, or albuminuria. Nevertheless, the diastolic blood pressure, total cholesterol, and LDL-C were lower in patients than in the control group, which probably reflects the use of antihypertensive and lipid-lowering medication as routine treatment. Coronary patients had a significant increase in the total cholesterol/HDL-C ratio and plasma Lp(a). Paradoxically, plasma homocysteine concentrations were higher in the control group than in patients, although both values were within the range of normality.

Distribution of the ACE, AGT, and AT1R genotypes between cases and controls

For the ACE (I/D), AGT M235T, and AT1R (A1166C) polymorphisms, it was confirmed that the proportion of genotypes fit the Hardy-Weinberg equilibrium.

The distribution of the frequencies of the ACE, AGT, and AT1R genotypes for the polymorphisms mentioned is described in Table 2. In our population, the frequency of the ACE DD genotype was higher (Table 3) than the frequency reported for populations of diverse ethnic origin, including other Caucasian populations.^{13,28-33} Nevertheless, the frequency of the DD genotype was not significantly greater among coronary

TABLE 2. Distribution of the ACE, AGT, and AT1R genotypes

	Controls	Cases	χ^2	P
ACE genotype				
DD	137 (43.5)	128 (42.7)	2.69	.26
ID	132 (41.9)	140 (46.7)		
II	46 (14.6)	32 (10.6)		
Total	315	300		
AGT genotype				
TT	59 (18.7)	87 (29.1)	11.61	.003
MT	157 (49.9)	145 (48.5)		
MM	99 (31.4)	67 (22.4)		
Total	315	299		
AT1R genotype				
AA	150 (49.7)	133 (48.0)	.34	.844
AC	126 (41.7)	122 (44.0)		
CC	26 (8.6)	22 (7.9)		
Total	302	277		

The figures in parenthesis indicate the percentage of the total.

patients.

Examination of the distribution of frequencies in the AGT M235T polymorphism revealed a significant difference ($X^2=11.60$; $P=.003$) between coronary patients and controls. The frequency of the TT homozygote was significantly higher ($X^2=9.08$; $P=.002$) in cases than in controls. There were no differences in the distribution of the frequencies of AT1R polymorphisms between patients and the control group. The risk (OR) of coronary artery disease among individuals with the genotypes analyzed are shown in Figure 2. The analyses adjusted for age revealed no significant changes for the ACE (I/D) and AT1R (A1166C) polymorphism. Nevertheless, the risk associated with TT homozygosis was 1.78 (95% CI, 1.22-2.59; $P<.05$), whereas participants with the MM genotype had an OR of 0.63 (95% CI, 0.43-0.90; $P<.05$). No significant differences between heterozygotic subjects were observed.

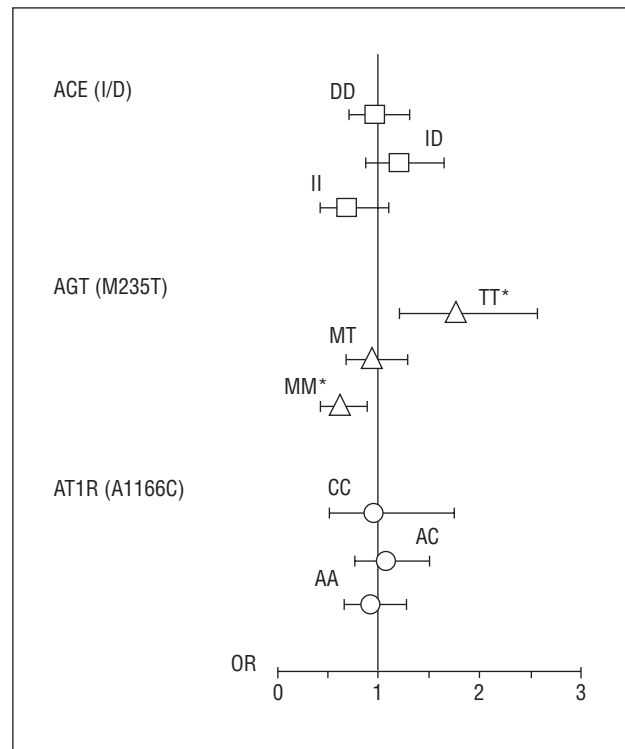


Fig. 2. Estimation of the risk of coronary artery disease related with genetic polymorphisms of the angiotensin-converting enzyme (ACE I/D), angiotensinogen (AGT M235T), and AT1R (A1166C) genes. OR indicates odds ratio. * $P<.05$.

Multivariate analysis

Step by step analysis of multiple logistic regression identified individuals at risk of presenting a coronary event. Two vectors of variables were established, one using the genotypes and the other with traditional coronary risk factors. Using 50% as the cut-off point, the model correctly classified 78% of the participants and 76% of coronary patients. The sensitivity of the model was 74% and the specificity was 80%.

In multiple logistic regression analysis adjusted for different risk factors, the TT genotype presented an OR of 1.9 (95% CI, 1.06-3.40; $P=.03$). The highest estima-

TABLE 3. Distribution of ACE genotypes in different countries

Region	Control group (n)	Genotype			Author and bibliographic reference
		DD (%)	ID (%)	II (%)	
Japan	76	18,3	48,9	32,8	Mizui et al ³²
South Asia*	442	18,3	41,8	39,8	Sagnella et al ³¹
Chile	117	18,5	49,0	32,5	Jalil et al ²⁸
Australia	51	22,0	53,0	25,0	Smith et al ³³
France	157	30,6	44,0	25,4	Marre et al ²⁹
U.S.A.	2,340	30,9	49,2	19,9	Lindpaintner et al ¹³
Germany	234	33,0	50,0	17,0	Schmidt et al ³⁰
Gran Canaria	315	43,5	41,9	14,6	Este estudio

*The study of Sagnella, et al. Includes different ethnic groups.

ted risks corresponded to diabetes (OR=4.4; 95% CI, 2.0-9.4; $P<.001$), total cholesterol/HDL-C ratio (OR=4.0; 95% CI, 2.4-6.8; $P<.001$), smoking (OR=2.7; 95% CI, 1.7-4.3; $P<.001$), alcohol use (OR=2.2; 95% CI, 1.2-4.2; $P=.02$), and hypertension (OR=2.1; 95% CI, 1.3-3.3; $P=.001$). There was no statistical evidence indicating that any genotype of ACE (I/D) or AT1R (A1166C) polymorphism could improve the capacity to predict a coronary event with respect to the traditional predictive factors cited above.

DISCUSSION

The basis of genetic approaches to complex diseases has been reviewed by Risch³⁴ in 1996, and other authors. Together with the problems derived from sample size and ethnic diversity, there is a certain tendency to publish studies in which a positive association has been demonstrated, a bias that makes it difficult to analyze association studies.^{14,35} An additional characteristic of our study was that it minimized the effect of the selection bias and loss of patients—due to early mortality—since it was a consecutive population studied during the acute phase of the coronary event.

Cambien, et al.¹⁰ were the first to describe the association between the DD genotype of the ACE gene and myocardial infarction, finding a more marked association between subjects with a low coronary risk profile according to classic risk factors. In other studies, the DD genotype has been related with coronary artery disease,²⁷ coronary restenosis,^{36,37} and a family history of myocardial infarction.¹¹ In contrast, no evidence was obtained that the genetic variations in the I/D polymorphism of the ACE gene influence the incidence of coronary artery disease in our population in a relevant way. Similarly, in the prospective study of Lindpaintner¹³ in 1995, no significant association was found between this polymorphism and ischemic heart disease, although a lower frequency of coronary events in II homozygotes was appreciated. We are found a higher than expected frequency of the DD genotype in both the patients who had suffered a coronary episode and the control population, compared with previous studies,^{28,29,31} including the study made in Spain by Espinosa, et al.,³⁸ who found the DD genotype in 33.9% of the control population.

The TT genotype of the angiotensinogen gene was present in 19% of our control population, compared with only 15% in most Western populations.⁷ Our results demonstrated a strong association between this polymorphism and the risk of coronary artery disease. Thus, TT homozygotes had a risk that was approximately two-fold,¹⁹ whereas the M235 homozygotes had a lower risk of coronary artery disease. Although studies of association suggest a role of the AGT gene in hypertensive disease, the link between the AGT gene and essential hypertension initially described by Jeunemai-

tre et al.⁷ has not been reproduced in other studies.^{39,40} In our analysis, no relation was found between the M235T polymorphism of the angiotensinogen gene and hypertension, which indicates that this polymorphism constitutes a coronary risk factor independent of the degree of arterial hypertension or antihypertensive treatment.

Multivariate analysis of logistic regression confirmed the TT genotype of angiotensinogen as a marker that identifies individuals with a two-fold greater probability of developing coronary artery disease, independently of the presence of other environmental risk factors.

Some studies of association have analyzed the risk profile of suffering a coronary event for combinations of polymorphic variants of certain RAAS genes.

Tiret, et al.²⁰ described a synergic association of DD (I/D) homozygotes of the ACE and CC gene of the A1166C polymorphism of the AT1R gene. For these authors, this gene interaction of risk for myocardial infarction might suggest a possible epistatic effect of the two genes, assuming that the C allele of AT1R is associated with a modified response of the angiotensin II receptor, thus modulating the possible risk conferred by the D allele of the ACE gene. Álvarez, et al.²¹, in a young Spanish population, developed a case-control study to determine the I/D genotypes of the ACE gene and A1166C of the gene of receptor 1 of angiotensin II. Separately, no association was observed; but the ACE-DD and AT1R-CC genotypes interacting synergically were associated with coronary artery disease (OR=5.32; 95% CI, 1.45-19.51). In contrast, Gardemann, et al.⁴¹ found no synergic interaction between the polymorphic variants of the ACE and AT1R genes and coronary artery disease in 2244 Caucasian men. Similarly, Rice, et al.⁴² demonstrated the absence of a synergic association with myocardial infarction, although they found a weak association between some genotypes (AC/II and CC/DD) and coronary stenosis. Coinciding with these studies, we found an association between AT1R (A1166C) polymorphism and coronary ischemic disease. Similarly, we found no epistatic effects between the polymorphic variants of the ACE and AT1R genes (data not shown).

Our work confirmed that diabetes mellitus—which has a prevalence of 12% in the control group—was an important risk factor for coronary artery disease, and was related to genetic and environmental factors in the Canary Island population. In addition, our population had some of the highest total cholesterol and LDL-C levels, as well as the peculiarity of being a region with a high rate of smoking.⁴³ Nevertheless, the prevalence of arterial hypertension did not differ from that of other Spanish or European regions.⁴⁴

The relation between the TT genotype of angiotensinogen and ischemic heart disease found in our study, if confirmed in more extensive studies and the rest of the

Spanish population, could have special interest with respect to the application of more aggressive preventive measures in this subpopulation.

CONCLUSIONS

The CC genotype of the AT1 receptor of angiotensin II and the DD genotype of angiotensin-converting enzyme did not behave like predictors of coronary artery disease. Nevertheless, TT homozygosis of the angiotensinogen gene predisposed independently to the appearance of a first coronary episode in the Canary Island population.

ACKNOWLEDEMENTS

We would like to thank all the doctors and nurses of different health centers, UAP, municipalities, and companies that contributed to this study. We also want to thank the patients and the people who participated disinterestedly as the control group.

REFERENCES

- Hunt SC, Williams RR, Barlow GK. A comparison of positive family history definitions for defining risk of future disease. *J Chronic Dis* 1986; 39: 809-821.
- Fuster V, Lewis A. Conner Memorial Lecture. Mechanisms leading to myocardial infarction: insights from studies of vascular biology. *Circulation* 1994; 90: 2126-2146.
- Busjahn A, Knoblauch H, Knoblauch M, Bohlender J, Menz M, Faulhaber HD et al. Angiotensin-converting enzyme and angiotensinogen gene polymorphisms, plasma levels, cardiac dimensions. A twin study. *Hypertension* 1997; 29: 165-170.
- Lonn EM, Yusuf S, Jha P, Montague TJ, Teo KK, Benedict CR et al. Emerging role of angiotensin-converting enzyme inhibitors in cardiac and vascular protection. *Circulation* 1994; 90: 2056-2069.
- Pfeffer MA, Braunwald E, Moye LA, Basta L, Brown EJ Jr, Cuddy TE et al. Effect of captopril on mortality and morbidity in patients with left ventricular dysfunction after myocardial infarction. Results of the survival and ventricular enlargement trial. The SAVE Investigators. *N Engl J Med* 1992; 327: 669-677.
- Rigat B, Hubert C, Alhenc-Gelas F, Cambien F, Corvol P, Soubrier F. An insertion/deletion polymorphism in the angiotensin I-converting enzyme gene accounting for half the variance of serum enzyme levels. *J Clin Invest* 1990; 86: 1343-1346.
- Jeunemaitre X, Soubrier F, Kotelevtsev YV, Lifton RP, Williams CS, Charru A et al. Molecular basis of human hypertension: role of angiotensinogen. *Cell* 1992; 71: 169-180.
- Bonnardeaux A, Davies E, Jeunemaitre X, Fery I, Charru A, Clauser E et al. Angiotensin II type 1 receptor gene polymorphisms in human essential hypertension. *Hypertension* 1994; 24: 63-69.
- Tiret L, Rigat B, Visvikis S, Breda C, Corvol P, Cambien F et al. Evidence, from combined segregation and linkage analysis, that a variant of the angiotensin I-converting enzyme (ACE) gene controls plasma ACE levels. *Am J Hum Genet* 1992; 51: 197-205.
- Cambien F, Poirier O, Lecerf L, Evans A, Cambou JP, Arveiler D et al. Deletion polymorphism in the gene for angiotensin-converting enzyme is a potent risk factor for myocardial infarction. *Nature* 1992; 359: 641-644.
- Tiret L, Kee F, Poirier O, Nicaud V, Lecerf L, Evans A et al. Deletion polymorphism in angiotensin-converting enzyme gene associated with parental history of myocardial infarction. *Lancet* 1993; 341: 991-992.
- Bohn M, Berge KE, Bakken A, Erikssen J, Berg K. Insertion/deletion (I/D) polymorphism at the locus for angiotensin I-converting enzyme and parental history of myocardial infarction. *Clin Genet* 1993; 44: 298-301.
- Lindpaintner K, Pfeffer MA, Kreutz R, Stampfer MJ, Grodstein F, LaMotte F et al. A prospective evaluation of an angiotensin-converting-enzyme gene polymorphism and the risk of ischemic heart disease. *N Engl J Med* 1995; 332: 706-711.
- Samani NJ, Thompson JR, O'Toole L, Channer K, Woods KL. A meta-analysis of the association of the deletion allele of the angiotensin-converting enzyme gene with myocardial infarction. *Circulation* 1996; 94: 708-712.
- Caulfield M, Lavender P, Farrall M, Munroe P, Lawson M, Turner P et al. Linkage of the angiotensinogen gene to essential hypertension. *N Engl J Med* 1994; 330: 1629-1633.
- Inoue I, Nakajima T, Williams CS, Quackenbush J, Puryear R, Powers M et al. A nucleotide substitution in the promoter of human angiotensinogen is associated with essential hypertension and affects basal transcription in vitro. *J Clin Invest* 1997; 99: 1786-1797.
- Niu T, Xu X, Rogus J, Zhou Y, Chen C, Yang J et al. Angiotensinogen gene and hypertension in Chinese. *J Clin Invest* 1998; 101: 188-194.
- Ward K, Hata A, Jeunemaitre X, Helin C, Nelson L, Namikawa C et al. A molecular variant of angiotensinogen associated with pre-eclampsia. *Nat Genet* 1993; 4: 59-61.
- Rodríguez-Pérez J, Rodríguez-Esparragón F, Hernández-Perera O, Anabitarte A, Losada A, Medina A et al. Association of Angiotensinogen M235T and A(-6)G gene polymorphisms with Coronary Heart Disease with independence of essential hypertension: The PROCAGENE Study. *J Am Coll Cardiol* 2001; 37: 1536-1542.
- Tiret L, Bonnardeaux A, Poirier O, Ricard S, Marques-Vidal P, Evans A et al. Synergistic effects of angiotensin-converting enzyme and angiotensin-II type 1 receptor gene polymorphisms on risk of myocardial infarction. *Lancet* 1994; 344: 910-913.
- Álvarez R, Reguero JR, Batalla A, Iglesias-Cubero G, Cortina A, Álvarez V et al. Angiotensin-converting enzyme and angiotensin II receptor 1 polymorphisms: association with early coronary disease. *Cardiovasc Res* 1998; 40: 375-379.
- Villar-Álvarez F, Banegas-Banegas JR, Rodríguez-Artalejo F, Del Rey-Calero J. Cardiovascular mortality in Spain and its autonomous communities (1975-1992). *Med Clin (Barc)* 1998; 110: 321-327.
- O'Brien E, Mee F, Atkins N, Thomas M. Evaluating of three devices for self-measurement of blood pressure according to the revised British Hypertension Society Protocol: The Omron HEM-705CP, Phillips HP5332, and Nissei DS-175. *Blood Press Monit* 1996; 1: 55-61.
- Rigat B, Hubert C, Corvol P, Soubrier F. PCR detection of the insertion/deletion polymorphism of the human angiotensin converting enzyme gene (DCP1) (dipeptidyl carboxypeptidase 1). *Nucleic Acids Res* 1992; 20: 1433.
- Shanmugam V, Sell KW, Saha BK. Mistyping ACE heterozygotes. *PCR Methods Appl* 1993; 3: 120-121.
- Baboolal K, Ravine D, Daniels J, Williams N, Holmans P, Coles GA et al. Association of the angiotensin I converting enzyme gene deletion polymorphism with early onset of ESRF in PKD1 adult polycystic kidney disease. *Kidney Int* 1997; 52: 607-613.
- Nakauchi Y, Suehiro T, Yamamoto M, Yasuoka N, Arai K, Kumon Y et al. Significance of angiotensin I-converting enzyme and angiotensin II type 1 receptor gene polymorphisms as risk factors for coronary heart disease. *Atherosclerosis* 1996; 125: 161-169.

28. Jalil JE, Piddo AM, Cordova S, Chamorro C, Braun S, Jalil R et al. Prevalence of the angiotensin I converting enzyme insertion/deletion polymorphism, plasma angiotensin converting enzyme activity, and left ventricular mass in a normotensive Chilean population. *Am J Hypertens* 1999; 12: 697-704.
29. Marre M, Jeunemaitre X, Gallois Y, Rodier M, Chatellier G, Sert C et al. Contribution of genetic polymorphism in the renin-angiotensin system to the development of renal complications in insulin-dependent diabetes: Genetique de la Nephropathie Diabetique (GENEDIAB) Study Group. *J Clin Invest* 1997; 99: 1585-1595.
30. Schmidt S, Stier E, Hartung R, Stein G, Bahnisch J, Woodroffe AJ et al. No association of converting enzyme insertion/deletion polymorphism with immunoglobulin A glomerulo-nephritis. *Am J Kidney Dis* 1995; 26: 727-731.
31. Sagnella GA, Rothwell MJ, Onipinla AK, Wicks PD, Cook DG, Capuccio FP. A population study of ethnic variations in the angiotensin-converting enzyme I/D polymorphism: relationships with gender, hypertension and impaired glucose metabolism. *J Hypertens* 1999; 17: 657-664.
32. Mizuiri S, Hemmi H, Inoue A, Yoshikawa H, Tanegashima M, Fushimi T et al. Angiotensin-converting enzyme polymorphism and development of diabetic nephropathy in non-insulin dependent diabetes mellitus. *Nephron* 1995; 70: 455-459.
33. Smith T, Panagiotopoulos S, Aldred P, Baker L, Jacklin C, Jerums G. Angiotensin converting enzyme (ACE) gene polymorphism in NIDDM with elevated albuminuria [resumen]. *J Am Soc Nephrol* 1995; 6: 456.
34. Risch N, Merikangas K. The future of genetic studies of complex human diseases. *Science* 1996; 273: 1516-1517.
35. Barley J, Blackwood A, Sagnella G, Markandu N, MacGregor G, Carter N. Angiotensinogen Met235→Thr polymorphism in a London normotensive and hypertensive black and white population. *J Hum Hypertens* 1994; 8: 639-640.
36. Guarda E, Fajuri A, Marchant E, Martínez A, Jalil J, Illanes G et al. El genotipo D/D del gen de la enzima conversiva de la angiotensina como factor de riesgo de reestenosis post-stent coronario. *Rev Esp Cardiol* 1999; 52: 475-480.
37. Hamon M, Bauters C, Amant C, McFadden EP, Helbecque N, Lablanche JM et al. Relation between the deletion polymorphism of the angiotensin-converting enzyme gene and late luminal narrowing after coronary angioplasty. *Circulation* 1995; 92: 296-299.
38. Espinosa JS, Rueda E, Muñoz E, Montiel A, Martínez S, Diéguez JL et al. Association between myocardial infarction and angiotensin converting enzyme gene polymorphism in young patients. *Med Clin (Barc)* 1998; 110: 488-491.
39. Brand E, Chatelain N, Keavney B, Caulfield M, Citterio L, Connell J et al. Evaluation of the angiotensinogen locus in human essential hypertension: a european study. *Hypertension* 1998; 31: 725-729.
40. Wang WY, Glenn CL, Zhang W, Benjafield AV, Nyholt DR, Morris BJ. Exclusion of angiotensinogen gene in molecular basis of human hypertension: sibpair linkage and association analyses in Australian Anglo-Caucasians. *Am J Med Genet* 1999; 87: 53-60.
41. Gardemann A, Nguyen QD, Humme J, Stricker J, Katz N, Tillmanns H et al. Angiotensin II type 1 receptor A1166C gene polymorphism. Absence of an association with the risk of coronary artery disease and myocardial infarction and of a synergistic effect with angiotensin-converting enzyme gene polymorphism on the risk of these diseases. *Eur Heart J* 1998; 19: 1657-1665.
42. Rice GI, Foy CA, Grant PJ. Angiotensin converting enzyme and angiotensin II type 1-receptor gene polymorphisms and risk of ischaemic heart disease. *Cardiovasc Res* 1999; 41: 746-753.
43. Instituto Nacional de Estadística. Encuesta de Presupuestos Familiares 1990-1991. Consumo de alimentos, bebidas y tabaco en cantidades físicas. Madrid: Instituto Nacional de Estadística, 1994.
44. Coca A. Control de la hipertension arterial en España. Resultados del estudio Controlpres 95. *Hipertension* 1995; 12: 182-188.