

Original article

# Factors Associated With Mortality in Out-of-hospital Cardiac Arrests Attended in Basic Life Support Units in the Basque Country (Spain)

Sendoa Ballesteros-Peña,<sup>a,\*</sup> Luís C. Abecia-Inchaurregui,<sup>b</sup> and Enrique Echevarría-Orella<sup>c</sup>

<sup>a</sup> Bilbao SAMUR-Protección Civil, Ayuntamiento de Bilbao, Bilbao, Vizcaya, Spain

<sup>b</sup> Departamento de Medicina Preventiva y Salud Pública, Facultad de Farmacia, Universidad del País Vasco, Vitoria-Gasteiz, Álava, Spain

<sup>c</sup> Departamento de Fisiología, Facultad de Farmacia, Universidad del País Vasco, Vitoria-Gasteiz, Álava, Spain

Article history:

Received 9 July 2012

Accepted 13 September 2012

Available online 17 December 2012

Keywords:

Cardiac arrest

Cardiopulmonary resuscitation

Emergency medical services

Ventricular fibrillation

Survival

ABSTRACT

**Introduction and objectives:** To describe the epidemiological characteristics of cardiac arrests attended in basic life support units in the Basque Country (Spain) and look for factors associated with failure of cardiopulmonary resuscitation.

**Methods:** We conducted an observational study during 18 months, including all out-of-hospital cardiopulmonary resuscitation provided by basic life support units. The variables defined in the Utstein-style were considered as independent and mortality as the dependent variable. We applied descriptive and analytical statistics and evaluated the magnitude of the association using a logistic regression model, which included variables with  $P < .05$  in the bivariate analysis.

**Results:** Of 1050 cardiac arrests attended, 15.7% of patients were revived in situ. The presumed etiology was cardiac in 55.3% of cases and 71.4% occurred at home. Cardiopulmonary resuscitation was started before the arrival of the ambulance in 22.9% of cases and in 18.2% the rhythm of presentation was shockable. Variables associated with lower mortality were: shockable rhythms (relative risk=0.44;  $P=.003$ ), patient aged <65 years (relative risk=0.44;  $P=.002$ ), time to cardiopulmonary resuscitation <8 min (relative risk=0.56;  $P=.039$ ), and out-of-home events (relative risk=0.55;  $P=.031$ ).

**Conclusions:** Cardiac arrest survival was low. Cardiopulmonary resuscitation before the arrival of the ambulance was rare. A shockable rhythm, age younger than 65 years, early cardiopulmonary resuscitation efforts, and a location away from home were associated with longer survival. It is necessary to develop strategies designed to reduce ambulance response time and educate the public in basic resuscitation.

© 2012 Sociedad Española de Cardiología. Published by Elsevier España, S.L. All rights reserved.

## Factores asociados a la mortalidad extrahospitalaria de las paradas cardiorrespiratorias atendidas por unidades de soporte vital básico en el País Vasco

RESUMEN

**Introducción y objetivos:** Describir las características epidemiológicas de las paradas cardiorrespiratorias atendidas por las unidades de soporte vital básico del País Vasco y determinar los factores asociados al fracaso de las maniobras de reanimación.

**Métodos:** Estudio observacional sobre el total de paradas cardiorrespiratorias asistidas por las unidades de soporte vital básico del País Vasco durante 18 meses. Se tomaron como variables independientes las definidas en el estilo Utstein y como variable dependiente la mortalidad extrahospitalaria. Se aplicó estadística descriptiva y analítica, evaluando la magnitud de asociación mediante el riesgo relativo aplicando un modelo de regresión logística.

**Resultados:** Se atendieron en total 1.050 paradas, de las que se reanimó in situ el 15,7%. El 55,3% de las paradas fueron de etiología cardiológica y el 71,4% aconteció en el hogar. Se intentó la reanimación antes de la llegada de la ambulancia en el 22,9% de los casos y en el 18,2% el ritmo de presentación fue desfibrilable. Las variables asociadas a menor mortalidad fueron ritmo desfibrilable (riesgo relativo = 0,44;  $p = 0,003$ ), edad del paciente < 65 años (riesgo relativo = 0,44;  $p = 0,002$ ), tiempo hasta la reanimación < 8 min (riesgo relativo = 0,56;  $p = 0,039$ ) y eventos extradomiciliarios (riesgo relativo = 0,55;  $p = 0,031$ ).

**Conclusiones:** La probabilidad de sobrevivir a una parada cardiorrespiratoria es baja. Se realizan pocos intentos de reanimación antes de la llegada de la ambulancia. Un ritmo desfibrilable, edades inferiores a 65 años, el inicio precoz de la reanimación y la localización fuera del domicilio se asocian a mayor

Palabras clave:

Parada cardíaca

Reanimación cardiopulmonar

Servicios médicos de urgencia

Fibrilación ventricular

Supervivencia

\* Corresponding author: Bilbao SAMUR-Protección Civil, Parque de bomberos de Miribilla, Juan Carlos Gortázar 3, 48003 Bilbao, Vizcaya, Spain.

E-mail address: sendoa.ballesteros@gmail.com (S. Ballesteros-Peña).

supervivencia. Deben crearse estrategias dirigidas a disminuir los intervalos de respuesta e instruir a la población en reanimación básica.

© 2012 Sociedad Española de Cardiología. Publicado por Elsevier España, S.L. Todos los derechos reservados.

## Abbreviations

ALSU: advanced life support unit  
BLSU: basic life support unit  
CPR: cardiopulmonary resuscitation  
CRA: cardiopulmonary arrest  
EMS: emergency medical system  
OHCA: out-of-hospital cardiopulmonary arrest

## INTRODUCTION

Out-of-hospital cardiopulmonary arrest (OHCA) is an important health problem because the probability of recovery is small even though the process is potentially reversible.

The exact incidence of this condition in Spain is still not known. National estimates range from 10 000<sup>1</sup> to 50 000 events per year.<sup>2</sup> This lack of data is due to the lack of a specific central registry and of national studies on OHCA, to the methodological limitations of the available studies, and to differences in the criteria they used to define cardiopulmonary arrest (CRA).<sup>3,4</sup>

It seems reasonable to think that OHCA survival has increased slightly since the creation of emergency medical systems (EMS).<sup>5,6</sup> However, many variables can have an impact on the final outcome after cardiopulmonary resuscitation (CPR) maneuvers outside the hospital setting as, in addition to the way the EMS is organized, there are the intrinsic patient characteristics to consider.

In the Basque Country, patients with OHCA are attended within the EMS, essentially through the emergency deployment of life support resources. There is usually a dual response involving the closest basic life support unit (BLSU), which is composed of nonphysician health professionals (emergency technicians and/or nurses) and starts early basic CPR, followed by an advanced life support unit (ALSU), composed of physicians and nurses with more sophisticated equipment at their disposal.

The objective of this study was to describe the epidemiological characteristics of OHCA attended by the BLSU of the emergency services network in the Basque Country and to determine the factors associated with failure of CPR efforts before transfer to a hospital emergency room.

## METHODS

The study sample comprised all cases of OHCA between July 1, 2009 and December 31, 2010 in which CPR was initiated by a BLSU of the emergency health transport system of the Basque Country with semiautomatic external defibrillators at their disposal (either as the only resource available or in combination with an ALSU).

The data were taken from the central OHCA database maintained by *Emergentziak-Osakidetza*. Entries to this database are made using the clinical information collected with a standard form by employees of the various resources integrated into the emergency network.

The independent variables included in this study were those defined in the Utstein template<sup>7</sup>: sex, age, supposed etiology of CRA, where the CRA occurred, any resuscitation attempts (such as

chest compression following instructions given by telephone from the coordination center) before the arrival of the BLSU, first electrocardiographic rhythm detected, and the time from EMS activation until the start of life support measures. The dependent variable was out-of-hospital mortality after CPR measures.

## Statistical Analysis

The results of the categorical variables are expressed as absolute frequencies and percentages while quantitative variables are expressed as medians [interquartile range].

For hypothesis testing, the chi-square test, Z test, and Mann-Whitney U test were used with a 2-tailed 95% level of significance ( $P < .05$ ).

The strength of the association was assessed by including variables with  $P < .05$  in the bivariate analysis in a multivariate logistic regression model. The relative risk (RR) of CPR failure, along with the 95% confidence interval (95%CI), were calculated according to the different variables included in the model.

The analysis was performed using the PASW 17, EpiInfo 3.5.1, and Excel 2007 software packages.

## RESULTS

During the 18 months of the study period, 1272 OHCA events with resuscitation attempts were recorded in the database; in 1050 (82.5%) of these, a basic life support resource was deployed. Case details and general characteristics are shown in Figure 1. The remaining cases (222) were attended exclusively by advanced life support resources and so were excluded from this study.

CPR outside the hospital measures were successful in 15.7% of the interventions, and the patients were transferred to hospital after the ALSU had restored spontaneous circulation. Resuscitation attempts were unsuccessful in 84.3% of the OHCA events.

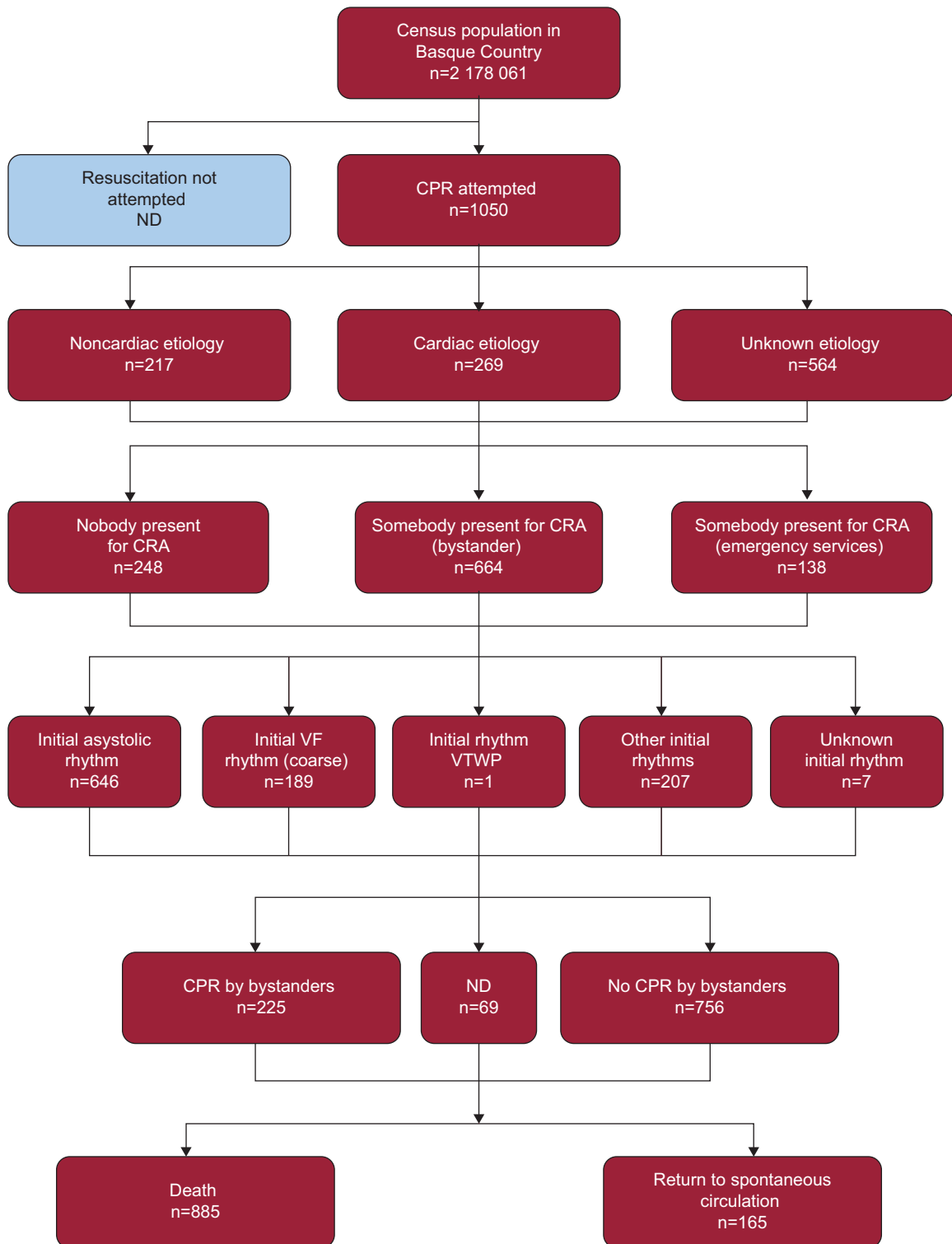
Of the patients attended, 64.2% were men, with a median age of 70 [25] years, and 35.8% were women, with a median age of 78 [20] years. The two groups (by sex) differed significantly in frequency ( $P < .001$ ) and age ( $P < .001$ ). Likewise, the median age of the patients who recovered spontaneous circulation after CPR was 65 [29.5] years, significantly younger ( $P < .001$ ) than those who died at the place where they were attended (74 [23.5] years).

The age ranges with the most incidents were 65–79 years, with 348 (33.2%) calls, and  $\geq 80$  years, with 337 (32.2%). Twelve patients (1.1%) were under 18 years of age (Fig. 2). In this latter group, 41.7% were transported to hospital after recovery of spontaneous circulation.

Information on the most probable etiology of the CRA was not defined in 53.7% of the reports. A cardiac cause was the most commonly suspected etiology in CRA—269 (55.3%) of the entire registry—followed by respiratory conditions, with 104 events (21.4%). Trauma was responsible for 39 (8%) of the OHCA events; drowning accounted for 6 (1.2%) cases. The remaining 68 (14%) cases were due to other noncardiac etiologies.

In 71.4% of the EMS calls, the CRA was attended at home, 19.3% were attended in the public streets, and a further 9.3% in various places outside the home.

In 76.4% of the cases, a third party was present. Family members and close friends were the most frequent group of witnesses (44.1% of the arrests).



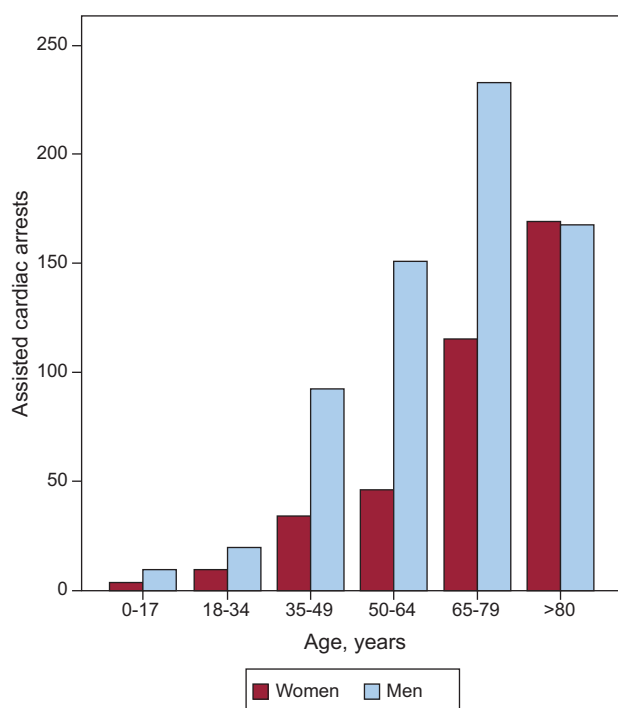
**Figure 1.** Utstein registry of out-of-hospital cardiopulmonary arrest included in the study. CPR, cardiopulmonary resuscitation; CRA, cardiopulmonary arrest; ND, no data; VF, ventricular fibrillation; VTWP, ventricular tachycardia without pulse.

Bystanders started some type of resuscitation effort before the arrival of the first unit in 22.9% of the 981 cases in which this information was recorded.

Upon arrival of emergency services personnel, shockable electrocardiographic rhythms could be detected in 18.2% of CRA. Asystolic rhythm was the most common form of presentation (61.9%), followed by pulseless electrical activity (12.4%). Fine

ventricular fibrillation (not suggestive of defibrillation) was detected as the initial rhythm in 7.4% of the cases.

The median time from EMS activation to application of the defibrillator device to the patient and the start of life support measures was 12 [8] min. This response interval was significantly lower ( $P<.001$ ) when the first rhythm detected was shockable (10 [5] min) and when the CRA occurred outside the home (10 [6] min).



**Figure 2.** Number of cardiopulmonary arrests attended, by age range and sex.

Table 1 shows the bivariate analysis of the variables associated with failure of the CPR outside the hospital measures. Table 2 shows the logistic regression model that includes the variables that achieved significance in the bivariate analysis. An initial shockable rhythm, age <65 years, delay in initiation of life support measures <8 min, and CRA outside the home are associated with lower failure rates for the resuscitation measures.

## DISCUSSION

Based on the consideration that the data source for OHCA used for this study considers all resuscitations performed by emergency health resources in the Basque Country, the ratio of OHCA cases of any etiology attended during the study period (1272) and the resident population in this autonomous community, it is possible to calculate an approximate incidence of 3.9 (95%CI, 3.6–4.2) events per 10 000 inhabitants or 18 400 cases per year if the data were extrapolated to the entire Spanish population.

However, the latter assumption should be treated with particular care and awareness of the huge sociodemographic differences between different regions of Spain. Other authors have reported regional incidences of between 2 and 5 events per 10 000 inhabitants,<sup>8–11</sup> which is close to the figure reported in our study.

Immediate survival after resuscitation techniques was 15.7% in our series, which is significantly lower than the recovery rates published in studies of other Spanish regions<sup>12</sup> or those published for the United States of 27.4% (95%CI, 26.9%–27.9%).<sup>13</sup> These differences can be attributed to differences in several factors,<sup>12</sup> such as EMS response times, characteristics of the population, and idiosyncrasies in EMS organization, among others.

The higher proportion of men in our study (64.1% compared to 35.9% women) is in agreement with most other studies.<sup>10,13,14</sup> Some recent studies have even pointed to a possible hormonal protective factor in women,<sup>15</sup> which would support the lower incidence of OHCA events of cardiac etiology in premenopausal women.

**Table 1**

General Characteristics of the Patients and Comparative Analysis According to the Immediate Outcome of the Resuscitation Measures

Variable	Total, no.	Death, no. (%)	RSC, no. (%)	P
<i>Age range</i>				
<65 years	363	284 (78.2)	79 (21.8)	<.001
≥65 years	685	599 (87.4)	86 (12.6)	
<i>Sex</i>				
Male	674	561 (83.2)	113 (16.8)	.22
Female	376	324 (86.2)	52 (13.8)	
<i>Presumed etiology</i>				
Cardiac	269	200 (74.4)	69 (25.6)	.007
Extracardiac	217	183 (84.3)	34 (15.7)	
<i>Place where OHCA occurred</i>				
Home	750	671 (89.5)	79 (10.5)	<.001
Outside the home	300	214 (71.3)	86 (28.7)	
<i>Witnesses present</i>				
Yes	802	659 (82.2)	143 (17.8)	<.001
No	248	226 (91.1)	22 (8.9)	
<i>CPR prior to EMS arrival</i>				
Yes	225	166 (73.8)	59 (26.2)	<.001
No	756	657 (86.9)	99 (13.1)	
<i>First rhythm detected</i>				
Treatable by defibrillation	190	127 (66.8)	63 (33.2)	<.001
Not treated by defibrillation	853	754 (88.4)	99 (11.6)	
<i>Delay between activation and start of life support</i>				
<8 min	137	100	37 (27%)	<.001
≥8 min	800	693 (86.6)	107 (13.4)	

CPR, cardiopulmonary resuscitation; EMS, emergency medical system; OHCA, out-of-hospital cardiopulmonary arrest; RSC, recovery of spontaneous circulation. In some groups, the sum might not reach the total because of missing values.

**Table 2**

Estimate of Adjusted Relative Risk With a Binary Logistic Regression Model for the Dependent Variable "Failure of Resuscitation Measures"

	β	P	Adjusted RR, 95%CI
Rhythm treatable by defibrillation	−0.819	.003	0.44 (0.26–0.75)
Age <65 years	−0.027	.002	0.44 (0.26–0.74)
Delay to LSM <8 min	−0.570	.039	0.56 (0.33–0.97)
OHCA outside the home	−0.587	.031	0.55 (0.3–0.5)
Constant	0.27	.266	

95%CI, 95% confidence interval; LSM, life-support measures; OHCA, extrahospital cardiopulmonary resuscitation; RR, relative risk. Only those variables that retained significance are shown.

Unlike other isolated studies (which report advantages for men<sup>8,14</sup> or for women<sup>10,16,17</sup>), in the present study sex is not independently associated with acute survival after CPR.

The highest incidence of CRA occurred in individuals in their 80s and 90s: a noteworthy increase in OHCA cases was observed beyond 65 years of age, in line with most published studies. Age less than 65 years was associated with lower failure rate of out-of-hospital resuscitation (RR=0.44). This study shows, once more, the association between advanced age and comorbidities, particularly those of cardiovascular origin.<sup>18</sup>

The available information on the most likely cause of the CRA (in the opinion of the emergency team) was not contained in the Utstein template in slightly over half the cases attended. This is the field that is most often left blank in the OHCA report, perhaps

because of the difficulty healthcare professionals have in determining the probable etiology.

Nevertheless, 55.3% of the cases with a probable cause recorded had a cardiogenic etiology listed as the likely cause for the CRA. This percentage is well below the figures reported in Spanish studies<sup>12</sup> and international studies,<sup>19,20</sup> where it is usually above 75% of all cases, although rates of around 60%, closer to those observed in our community, have been reported more recently.<sup>21</sup>

Such a difference could be explained, at least partially, by a possible bias by the healthcare team in classifying the cause of the CRA. While noncardiac causes (especially trauma, drowning, or poisoning) are usually clearly identifiable even by nonhealthcare professionals, cardiopathic causes are more subtle in terms of presentation, and diagnosis of such etiologies as the cause for sudden death may be difficult to make. Therefore, it may be that most of the cases in which the etiologic cause is not indicated may in fact be a CRA of cardiac origin.

It has been reported that most cases of OHCA occur at the patient's residence and that the mortality associated with OHCA is higher in the home than in other places.<sup>22,23</sup>

Several factors, such as longer response times of the emergency services, may be responsible for the higher home mortality, and these should be studied more closely.<sup>22,23</sup> We also should not forget that most situations in which resuscitation measures are attempted when they are not indicated because of their supposed futility (terminal patients, poor quality of life, etc.) more often occur at home. This is conditioned by the fact that the first resource to arrive on the scene is usually a BLSU. The ethical dilemma of not initiating CPR or initiating it while an ALSU awaits authorization by telephone from the emergency coordination center to then stop the measures could be resolved by implementing protocols that determine whether resuscitation is appropriate for patients receiving CRA in an out-of-hospital setting.<sup>24</sup> In addition, this is an aspect that is not contemplated in the Ustein template, which could replicate this bias in other similar epidemiologic studies.<sup>10</sup>

The presence of bystanders and their ability identify CRA are variables to be taken into account when the out-of-hospital outcomes are assessed, in particular because they will have an impact on the time-to-intervention in the survival chain. A relevant aspect highlighted by this study is that, even though a bystander was present in more than 75% of the cases of CRA, few attempts were made to initiate an attempt at CPR prior to the arrival of the first responders. Nonetheless, these factors did not have a statistically significant effect on the final outcome.

Electrocardiographic rhythms were identified, and classified according to medical criteria, from electronic records extracted from the defibrillator after use. Asystolic rhythm was the most frequently detected rhythm after application of a semiautomatic external defibrillator. It is also noteworthy that very few patients had coarse ventricular fibrillation (ie, suitable to defibrillation). The 18.2% rate we observed is among the lowest of the studies reviewed.<sup>12</sup> This simply confirms that the longer the response time, the lower the probability of finding the patient in fibrillation. The presence of a shockable rhythm when the first responders arrive is the predictive variable most strongly associated with survival after attempts at resuscitation (RR=0.44). This underscores the need to devise strategies aimed at reducing the response time before application of a semiautomatic external defibrillator.

The response time of the emergency units is among the main parameters for assessing EMS performance. In addition, the data quality is very attractive because these times are very easy to measure.

For the purposes of this study, we chose "time-to-activation of EMS-start of life support measures" as the most accurate (the times of each action are automatically recorded) and the most relevant from a clinical point of view.<sup>25</sup> This period covers the time from

receipt of the call in the emergency coordination center to the time of diagnosis of CRA, placing the defibrillator, and initiating life support. The delay will therefore include the time used to process the call, activate the emergency units, and reach the patient.

With regard to this variable, and as might be expected, a clear relationship was observed between early action and the final outcome of the resuscitation measures, with values close to those reported by other authors.<sup>9,26</sup> However, from the clinical perspective, the response times obtained are longer than is desirable.

Finally, and in view of the outcomes obtained, it may be necessary to consider, on the one hand, strategies aimed at reducing response times in CRA cases, given that this is a key factor in the outcomes of CRA measures, and on the other, the implementation of effective training programs on resuscitation techniques among the target population.

## Limitations

This study is subject to a series of methodological limitations. First is the lack of clinical data on OHCA assisted by an ALSU as the only resource at the site. However, given that the criteria for not activating a BLSU along with an ALSU in the face of CRA (within the "dual response" strategy) are purely logistical (such as not having an emergency resource available close to the site) and nonclinical, it seems reasonable to assume that the sample used is representative.

There is also a lack of follow-up of resuscitated patients, and outcomes after transfer to hospital are not known. These gaps in information are a reflection of the difficulties faced by the basic life support resources in accessing data.

Likewise, there is no record of the quality of the CPR administered, whether by bystanders or by the care team. Similarly, no data are available on the time elapsed between the patient's loss of consciousness and activation of the EMS, or from the start of resuscitation measures by the BLSU and arrival to the ALSU. Both aspects, which can be overcome through the design of new prospective studies, could be of great interest as they would partially extend the results obtained.

## CONCLUSIONS

The findings of this study show that the chances of surviving CRA in the Basque Country are low and that CPR is very seldom attempted prior to arrival of the ambulance. A shockable rhythm, age < 65 years, early initiation of life support measures, and occurrence at a site outside the home were associated with increased survival until transfer to hospital.

In addition, the findings of the present study highlight the need to strive to create strategies aimed at reducing EMS response time and informing the general population of basic resuscitation techniques.

## ACKNOWLEDGMENTS

We thank all members of the basic life support resources in the network of emergency transport of the Basque Country (Red Cross, DYA [Detente y Ayuda], Transporte Sanitario Bizkaia, Ambulancias Euskadi, Larrialdia, Gipuzkoa Emergentziak and Ambulancias Gipuzkoa) for their cooperation in collecting and sending the data, and to Emergentziak Osakidetza for providing us with access.

## CONFLICTS OF INTEREST

None declared.



## REFERENCES

1. Cosin J. Muerte súbita extrahospitalaria en España. In: Bayes de Luna A, Brugada P, Cosin Aguilar J, Navarro López F, editors. Muerte súbita cardíaca. Barcelona: Doyma; 1991. p. 13–21.
2. Álvarez JA, Reyes S, Espinosa S, Álvarez de Mon M. Out-of-hospital cardiac arrest. Resuscitation in Spain. Resuscitation. 2000;45:S11.
3. Raba Oruña S, Villa Puente M, Royano Ruiz M, Ortiz Lebaniegos I, Solar Herrera A, Díez Gutiérrez A. Errores en la cumplimentación de los certificados médicos de defunción: la parada cardiorrespiratoria como causa inmediata de muerte y sus consecuencias. Rev SEMG. 2004;65:349–53.
4. Álvarez Fernández JA. Supervivencia de la parada cardíaca. Rev Clin Esp. 2002; 202:658–64.
5. Montgomery WH. Prehospital cardiac arrest: the chain of survival concept. Ann Acad Med Singapore. 1992;21:69–72.
6. Silfvast T, Ekstrand A. The effect of experience of on-site physicians on survival from prehospital cardiac arrest. Resuscitation. 1996;31:101–5.
7. Jacobs I, Nadkarni V, Bahr J, Berg RA, Billi JE, Bossaert L, et al. Resuscitation cardiac arrest and cardiopulmonary resuscitation outcome reports: update and simplification of the Utstein templates for resuscitation registries. A statement for healthcare professionals from a task force of the International Liaison Committee on Resuscitation. Resuscitation. 2004;63:233–49.
8. Hormeño Bermejo RM, Cordero Torres JA, Garcés Ibáñez G, Escobar Escobar A, Santos García AJ, Arroyo Fernández de Aguilar J. Análisis de la asistencia a la parada cardiorrespiratoria por una Unidad Medicalizada de Emergencias. Aten Primaria. 2011;43:369–76.
9. López-Messa JB, Alonso-Fernández JI, Andrés-De Llano JM, Garmendia-Leiza JR, Ardura-Fernández J, De Castro-Rodríguez F, et al. Características generales de la parada cardíaca extrahospitalaria registrada por un servicio de emergencias médicas. Emergencias. 2012;24:28–34.
10. Navalpotro Pascual JM, Fernández Pérez C, Navalpotro Pascual S. Supervivencia en las paradas cardiorrespiratorias en las que se realizó reanimación cardiopulmonar durante la asistencia extrahospitalaria. Emergencias. 2007;19:300–5.
11. Iglesias Vázquez JA, Rodríguez Núñez A, Barreiro Díaz MV, Sánchez Santos L, Cegarra García M, Penas Penas M. Plan de desfibrilación externa semiautomática en Galicia. Resultados finales de su implantación. Emergencias. 2009;21:99–104.
12. Ballesteros Peña S. Supervivencia extrahospitalaria tras una parada cardiorrespiratoria en España: una revisión de la literatura. Emergencias. 2013 (article in press).
13. Centers for Disease Control and Prevention. Out-of-hospital cardiac arrest surveillance—Cardiac Arrest Registry to Enhance Survival (CARES), United States, October 1, 2005–December 31, 2010. MMWR. 2011;60:SS8.
14. Herlitz J, Rundqvist S, Bang A, Aune S, Lundström G, Ekström L, et al. Is there a difference between women and men in characteristics and outcome after in hospital cardiac arrest? Resuscitation. 2001;49:15–23.
15. Kitamura T, Iwami T, Nicho G, Nishiuchi T, Hayashi Y, Nishiyama C, et al. Reduction in incidence and fatality of out-of hospital cardiac arrest in female in reproductive age. Eur Heart J. 2010;31:1365–72.
16. Pell JP, Sirel J, Marsden AK, Cobbe SM. Sex differences in outcome following community-based cardiopulmonary arrest. Eur Heart J. 2000;21: 239–44.
17. Mahapatra S, Bunch TJ, White RD, Hodge DO, Packer DL. Sex differences in outcome after ventricular fibrillation in out-of-hospital cardiac arrest. Resuscitation. 2005;65:197–202.
18. Morentin B, Audicana C. Estudio poblacional de la muerte súbita cardiovascular extrahospitalaria: incidencia y causas de muerte en adultos de edad mediana. Rev Esp Cardiol. 2011;64:28–34.
19. Engdahl J, Bang A, Karlson BW, Lindqvist J, Herlitz J. Characteristics and outcome among patients suffering from out of hospital cardiac arrest of noncardiac aetiology. Resuscitation. 2003;57:33–41.
20. Pell JP, Sirel JM, Marsden AK, Ford I, Walker NL, Cobbe SM. Presentation, management, and outcome of out of hospital cardiopulmonary arrest: comparison by underlying aetiology. Heart. 2003;89:839–42.
21. Roger VL, Go AS, Lloyd-Jones DM, Adams RJ, Berry JD, Brown TM, et al. Heart disease and stroke statistics—2011 update: a report from the American Heart Association. Circulation. 2011;123:e18–209.
22. Weisfeldt ML, Everson-Stewart S, Sitlani C, Rea T, Aufderheide TP, Atkins DL, et al. Ventricular tachyarrhythmias after cardiac arrest in public versus at home. N Engl J Med. 2011;364:313–21.
23. Nakanishi N, Nishizawa S, Kitamura Y, Nakamura T, Matsumuro A, Sawada T, et al. The increased mortality from witnessed out-of-hospital cardiac arrest in the home. Prehosp Emerg Care. 2011;15:271–7.
24. Grudzen CR, Liddicoat R, Hoffman JR, Koenig W, Lorenz KA, Asch SM. Developing quality indicators for the appropriateness of resuscitation in prehospital atraumatic cardiac arrest. Prehosp Emerg Care. 2007;11:434–42.
25. Myers JB, Slovis CM, Eckstein M, Goodloe JM, Isaacs SM, Loflin JR, et al. Evidence-based performance measures for emergency medical services systems: a model for expanded EMS benchmarking a statement developed by the 2007 consortium U.S. metropolitan municipalities' EMS Medical Directors (Appendix). Prehosp Emerg Care. 2008;12:141–51.
26. Koike S, Ogawa T, Tanabe S, Matsumoto S, Akahane M, Yasunaga H, et al. Collapse-to-emergency medical service cardiopulmonary resuscitation interval and outcomes of out-of-hospital cardiopulmonary arrest: a nationwide observational study. Crit Care. 2011;15:R120.