

BRIEF REPORTS

Valvular Heart Disease Associated with Benfluorex

Josefa Rafel Ribera,^a Roser Casañas Muñoz,^a Nuria Anguera Ferrando,^a Nuria Batalla Sahún,^a Alberto Castro Gels,^b and Ramon Pujadas Capmany^a

^aServicios de Cardiología y ^bCirugía Cardíaca. Hospital del Sagrado Corazón. Barcelona. España.

We report the first case of valvular heart disease due to benfluorex. A 50-year-old woman who had been taking the anorectic agent benfluorex intermittently for one year developed severe fibrosis and regurgitation of the mitral, aortic and tricuspid valves. Clinical, echocardiographic and histopathological findings were analogous to those reported with fenfluramine and dexfenfluramine. The similarity between the histopathological lesion documented in patients treated with the appetite suppressants fenfluramine, dexfenfluramine and benfluorex and the valvular lesions reported in valve disease associated with ergot alkaloid use and carcinoid heart disease suggest a common pathophysiological mechanism and a central role for serotonin in the development of the disease.

Key words: *Valvular fibrosis. Benfluorex. Appetite suppressant.*

Full English text available at: www.revespcardiol.org

Valvulopatía cardíaca asociada al uso de benfluorex

Presentamos un caso asociado al tratamiento con benfluorex, con fibrosis tetraavalvular subaguda que inducía intensa regurgitación mitral, aórtica y tricuspídea, además de moderada insuficiencia pulmonar. Las características clínicas, ecocardiográficas e histológicas del cuadro son análogas a las descritas con fenfluramina y dexfenfluramina, por lo que debería añadirse el benfluorex a la lista de fármacos anorexígenos que pueden inducir valvulopatía. La similitud entre la histopatología valvular hallada en los pacientes tratados con estos tres tipos de anorexígenos serotoninérgicos y la asociada al consumo de alcaloides ergotamínicos y a la cardiopatía carcinoide hacen pensar en la existencia de un mecanismo fisiopatológico común y un papel central de la serotonina como mediador de la lesión valvular.

Palabras clave: *Fibrosis valvular. Benfluorex. Anorexígenos.*

INTRODUCTION

In 1997 Connolly et al¹ described the association between cardiac valve disease and combined treatment with the anorexigenic pharmaceutical agents fenfluramine and phentermine. Fenfluramine is a sympathomimetic amine whose anorexigenic effect is mediated by the activation of the cerebral serotonergic pathways, promoting its liberation, inhibiting its recapture, and exercising an agonist effect on the serotonin receptors.² Phentermine is an adrenergic agent that interferes with the pulmonary breakdown of serotonin, which explains its association with primary arterial pulmonary hypertension.^{3,4} Although initially the risk was attributed to the synergistic effect of the association of the two drugs,^{5,6} cases of valve disease were la-

ter described in patients who were treated exclusively with either fenfluramine or dexfenfluramine.

CLINICAL CASE

This was a fifty-year-old patient, with normal cardiologic examination performed 2 years previously. After 12 months of intermittent treatment with Modulator[®] (benfluorex)⁷ the patient developed stress dyspnea and was admitted for acute pulmonary edema. Examination revealed heart gallop, tachycardia of 100 beats/minute with third and fourth sounds, a pansystolic mitral regurgitation murmur, and an aortic diastolic regurgitation murmur. Chest X-ray revealed slight cardiomegaly, with signs of alveolointerstitial edema. Electrocardiogram was normal, and transthoracic echocardiogram showed thickening of the 4 cardiac valves, with a reduction in their mobility, and intense mitral aortic and tricuspid regurgitation with moderate pulmonary insufficiency. Biventricular function was hyperdynamic and acute and the arterial pulmonary systolic pressure was 72 mm Hg. Analysis, including determination of the 5-hydroxyindolacetic level and

Correspondence: Dra. J. Rafel Ribera.
Servicio de Cardiología. Hospital del Sagrado Corazón.
Viladomat, 288. 08029 Barcelona. España.
E-mail: jrafelr@airtel.net

Received 9 January 2002.
Accepted for publication 4 October 2002.

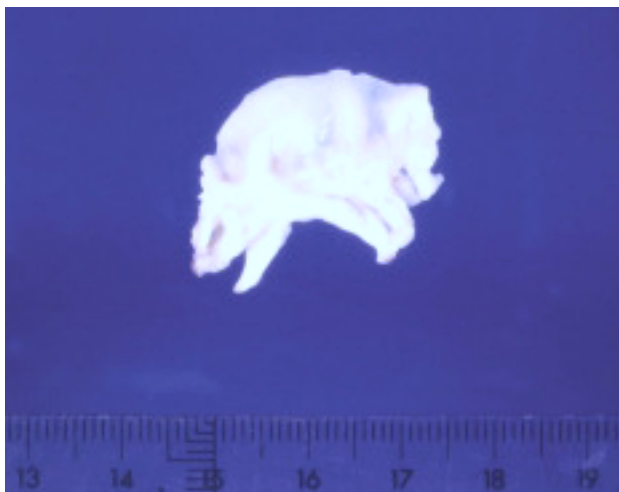


Fig. 1. Mitral valve covered by dense fibrous plaque made up of myofibroblasts in a matrix of mucopolysaccharides and collagen that has not invaded or destroyed the underlying valve architecture, but has caused a retraction of the free valve edge with consequent hemodynamic dysfunction.

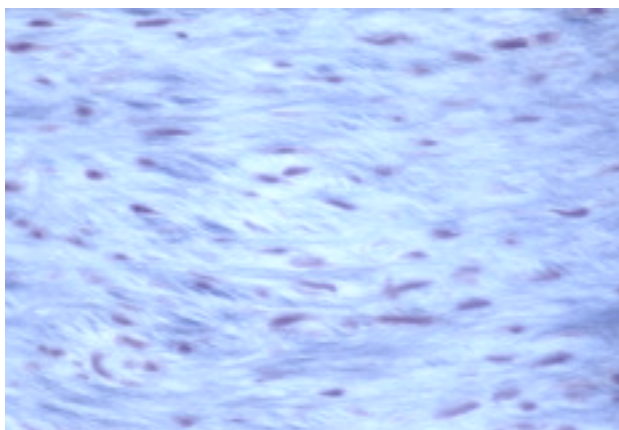


Fig. 2. Immunohistochemical preparation: dense infiltration of myofibroblasts.

the immunological profile, were normal, and blood work was negative.

The patient continued to be symptomatic despite medical treatment, and underwent mitral valve and aortic valve exchange via disk prosthesis, in addition to tricuspid valvuloplasty. The macroscopic aspect of the cardiac valves showed diffuse fibrosis. There was shortening of the mitral cords (Figure 1), a thickened tricuspid valve, and retraction of the cusps of the aortic valve. Microscopic examination of the valves revealed the presence of dense fibrous plaques made up of myofibroblasts in a matrix of mucopolysaccharides and collagen that produced a retraction of the normal

value endothelium (Figure 2). The postoperative course was normal, and the patient was discharged from the hospital ten days later.

DISCUSSION

The histological lesion described is identical to that observed in valve disease associated with the anorexigens fenfluramine and dexfenfluramine,⁸⁻¹⁰ to carcinoid heart disease,^{11,12} and to valve disease caused by ergotamine alkaloids.¹³ This gives rise to the thought that serotonin has a central physiopathological role in the genesis of these valve lesions, given the similarity in the chemical structure of serotonin, ergotamine, and methysergide.¹³ The effect of fenfluramine, dexfenfluramine, and benfluorex on the liberation of serotonin in the brain, inhibiting its re-absorption, as well as its effect on the liberation of serotonin from plaque granules may be the mechanism responsible for valve fibroproliferation; this hypothesis is becoming more and more solid as time goes by.

REFERENCES

1. Connolly HM, Crary JL, McGoon MD, Hensrud DD, Edwards BS, Edwards WD, et al. Valvular heart disease associated with fenfluramine-phentermine. *N Engl J Med* 1997;337:581-8.
2. Mitchell P, Smythe G. Hormonal response to fenfluramine in depressed and control subjects. *J Affect Disord* 1990;19:43-51.
3. Bauer L. Pulmonary hypertension. *Chir Prax* 1978;23:497.
4. Morita T, Mehendale HM. Effects of chlorphentermine and phentermine on the pulmonary disposition of 5-hydroxytryptamine in the rat *in vivo*. *Am Rev Respir Dis* 1983;127:747-50.
5. Weintraub M. Long-term weight control study: conclusions. *Clin Pharmacol Ther* 1992;51:642-6.
6. Graham DJ, Green L. Further cases of valvular heart disease associated with fenfluramine-phentermine. *N Engl J Med* 1997;337:635.
7. Raynaud PH. Tratamiento del paciente hipertenso, de la hiperlipemia y la diabetes. *Cardiología práctica* 2002;11:37.
8. Kurz X, Van Ermen A. Valvular heart disease associated with fenfluramine-phentermine. *N Engl J Med* 1997;337:1172-3.
9. Melero JM, Rodríguez I, Such M, Porras C, Olalla E, Espinosa JS. Regurgitación valvular causada por fármacos anorexígenos. *Rev Esp Cardiol* 2000;53:1667-70.
10. Biswas SS, Donovan CL, Forbess JM, Royal SH, Landolfo KP. Valve replacement for appetite suppressant-induced valvular heart disease. *Ann Thorac Surg* 1999;67:1819-22.
11. Robiolio PA, Rigolin VH, Wilson JS, Harrison JK, Sanders LL, Bashore TM, et al. Carcinoid heart disease. Correlation of high serotonin levels with valvular abnormalities detected by cardiac catheterization and echocardiography. *Circulation* 1995;92:790-5.
12. El-Rassi I, Oroujji M, Tapia M, Depoix JO, Henri I, Cormier B, et al. Cardiopathie carcinoides. *Arch Mal Coeur* 1998;91:79-82.
13. Robertson JJ. Serotonergic type-2 (5-HT₂) antagonists: a novel class of cardiovascular drugs. *J Cardiovasc Pharmacol* 1991;17(Suppl 5):48-53.