

Original article

Magnitude and Management of Metabolic Syndrome in Spain in 2008-2010: The ENRICA Study



Pilar Guallar-Castillón,^a Raúl Francisco Pérez,^a Esther López García,^a Luz M. León-Muñoz,^a M. Teresa Aguilera,^b Auxiliadora Graciani,^a Juan Luis Gutiérrez-Fisac,^a José R. Banegas,^a and Fernando Rodríguez-Artalejo^{a,*}

^a Departamento de Medicina Preventiva y Salud Pública, Facultad de Medicina, Universidad Autónoma de Madrid/IdiPaz, CIBER de Epidemiología y Salud Pública, CIBERESP, Madrid, Spain

^b Departamento Médico, Sanofi-Aventis, Barcelona, Spain

Article history:

Received 28 May 2013

Accepted 9 August 2013

Available online 14 January 2014

Keywords:

Metabolic syndrome

Cardiovascular disease

Diabetes mellitus

Hypertension

Abdominal obesity

ABSTRACT

Introduction and objectives: Few studies in Spain have reported the distribution of metabolic syndrome using the harmonized definition and that of premorbid metabolic syndrome, which consists of metabolic syndrome without diabetes mellitus or cardiovascular disease. Moreover, their regional distributions and clinical management are unknown. The present study examined the distributions and clinical management of both syndromes in Spain.

Methods: This cross-sectional study was performed from 2008 to 2010 in 11 149 representative individuals of the Spanish population aged 18 years or older. Data were obtained through standardized physical examination, and analytical measurements were done in a central laboratory.

Results: The prevalences (95% confidence interval) of metabolic syndrome and premorbid metabolic syndrome were 22.7% (21.7%-23.7%) and 16.9% (16.0%-17.8%), respectively. The frequency of both syndromes increased with age and was higher in men than in women up to 65 years; above this age, the frequency was higher in women. The communities of the south of Spain and the Balearic and Canary islands had the highest prevalence of both syndromes, in some regions reaching double that of the community with the lowest prevalence. About one third of patients with premorbid metabolic syndrome reported that they had not received health recommendations to improve their lifestyles; of those that did receive advice, adherence was low, particularly for reducing weight (31.9%) and salt intake (38.3%).

Conclusions: The prevalence of metabolic syndrome is high in Spain and considerable geographical differences exist in its distribution. There is substantial room for improvement in the clinical management of premorbid metabolic syndrome.

© 2013 Sociedad Española de Cardiología. Published by Elsevier España, S.L. All rights reserved.

Magnitud y manejo del síndrome metabólico en España en 2008-2010: Estudio ENRICA

RESUMEN

Introducción y objetivos: Pocos estudios en España han descrito la distribución del síndrome metabólico según la definición armonizada, y del síndrome metabólico premórbido, que es el síndrome metabólico sin diabetes mellitus o enfermedad cardiovascular. Además, se desconoce la distribución por comunidades autónomas y su manejo clínico. Este trabajo examina la distribución y el manejo clínico de ambos síndromes en España.

Métodos: Estudio transversal realizado de 2008 a 2010 sobre 11.149 personas representativas de la población española de 18 o más años. La información se obtuvo mediante examen físico estandarizado y las determinaciones analíticas se hicieron en un laboratorio central.

Resultados: La prevalencia (intervalo de confianza del 95%) de síndrome metabólico fue del 22,7% (21,7-23,7) y la del premórbido, el 16,9% (16,0-17,8). La frecuencia de ambos síndromes aumentó con la edad y fue mayor en varones que en mujeres hasta los 65 años; a partir de esa edad, fue mayor entre las mujeres. Las comunidades del sur de España y las insulares fueron las de mayor prevalencia de ambos síndromes, y en algún caso resultó el doble que la de la comunidad de menor prevalencia. Aproximadamente un tercio de los pacientes con síndrome metabólico premórbido declararon no recibir consejo sanitario para mejorar sus estilos de vida; entre los que recibieron consejo, el seguimiento fue bajo, especialmente para perder peso (31,9%) y reducir la sal (38,3%).

Palabras clave:

Síndrome metabólico

Enfermedad cardiovascular

Diabetes mellitus

Hipertensión

Obesidad abdominal

* Corresponding author: Departamento de Medicina Preventiva y Salud Pública, Facultad de Medicina, Universidad Autónoma de Madrid, Arzobispo Morcillo 2, 28029 Madrid, Spain.

E-mail address: fernando.artalejo@uam.es (F. Rodríguez-Artalejo).

Conclusiones: La prevalencia de síndrome metabólico es elevada en España. Hay importantes diferencias geográficas en su distribución y sustanciales oportunidades de mejora del manejo clínico del síndrome metabólico premórbido.

© 2013 Sociedad Española de Cardiología. Publicado por Elsevier España, S.L. Todos los derechos reservados.

Abbreviations

CVD: cardiovascular disease
MS: metabolic syndrome
PMS: premorbid metabolic syndrome
RF: risk factor

INTRODUCTION

Metabolic syndrome (MS) consists of the aggregation of various cardiometabolic risk factors (RFs), such as abdominal obesity, atherogenic dyslipidemia, and high blood pressure and blood glucose.¹ Individuals with MS are at an increased risk of diabetes mellitus (DM) and cardiovascular disease (CVD).^{1,2} Although the very existence of MS and its clinical utility are controversial,³ the relevance of this syndrome is 2-fold. Firstly, MS serves to signal to the clinical professional that the presence of other RFs should be investigated in those patients with multiple cardiometabolic RFs. Secondly, MS enables better identification of high-risk individuals that require intervention via both clinical and public health strategies. For the purposes of this intervention, 2 main types of patients can be distinguished: those that already have DM or CVD whose prognosis is negatively affected by the elevation of the cardiometabolic RFs and who should be carefully treated, and those free of DM and CVD, described as patients with premorbid MS (PMS). These patients are the focus of primary cardiometabolic prevention, primarily through lifestyle modification and, if necessary, drugs.³

Information on MS epidemiology has been hampered by the existence of various operational definitions. Fortunately, in 2009 an international committee proposed a harmonized definition of MS that facilitates comparisons between studies.⁴ So far, only 2 national studies in Spain have estimated the prevalence of MS using this new definition. The DARIOS study reported the frequency of MS and PMS in persons aged between 35 and 74 years via independent analyses in 10 autonomous communities in the first decade of this century,⁵ whereas the di@bet.es study characterized MS frequency in persons aged between 18 and 90 years in 2009 to 2010.⁶ However, these studies did not report the regional frequency of MS or examine the clinical management of these patients.

Accordingly, this work describes the frequency and detailed geographical distribution of MS and PMS, as well as their clinical management, in the Spanish population aged 18 years or older in 2008 to 2010.

METHODS

Study Design and Participants

The data were derived from the ENRICA study,⁷ whose methods have been previously published. ENRICA was a cross-sectional study performed with 12 948 representative persons from the noninstitutionalized Spanish population aged 18 years or older. Study participants were selected by stratified clustering sampling. First, the sample was stratified by province and municipality size.

Next, municipalities and then census tracts were selected at random. Finally, households were randomly selected in each tract using landline phone listings, and 1 person was selected in each household. Information was collected in 248 municipalities and 1241 census tracts.

From June 2008 to October 2010, data were gathered in 3 sequential stages: a) telephone interview on lifestyle and morbidity; b) first home visit to collect blood and urine samples, and c) second home visit to perform a physical examination and obtain a dietary history. The overall response rate (for all 3 data collection phases) was 51%.

ENRICA participants provided written informed consent. The study protocol was approved by the Clinical Research Ethics Committees of *Hospital La Paz* in Madrid and *Hospital Clínic* in Barcelona.

Study Variables

Metabolic Syndrome

Waist circumference was measured with a flexible inelastic tape at the midpoint between the last rib and the iliac crest at the end of a normal expiration.⁸ Blood glucose was measured by the glucose oxidase method after 12-h fasting.⁹ Blood pressure was measured under standardized conditions with validated automatic sphygmomanometers.¹⁰ Serum high-density lipoprotein cholesterol and triglyceridemia were measured by the direct method using elimination/catalase and the glycerol phosphate oxidase method, respectively.¹¹

According to the new harmonized definition,⁴ diagnosis of MS requires fulfillment of at least 3 of the following 5 criteria: a waist circumference ≥ 102 cm in men and ≥ 88 cm in women; a fasting blood glucose level ≥ 100 mg/dL or treatment with antidiabetic drugs; a systolic or diastolic blood pressure ≥ 130 mmHg or ≥ 85 mmHg, respectively, or treatment with antihypertensive medication; a triglyceride level ≥ 150 mg/dL; and a serum high-density lipoprotein cholesterol level < 40 mg/dL in men or < 50 mg/dL in women. To identify individuals with PMS, we excluded those who had a blood glucose level ≥ 126 mg/dL, were being treated with antidiabetic drugs, and had a previous diagnosis of DM or CVD (myocardial infarction, stroke, and heart failure).

Other Variables

In addition to age and sex, participants were asked about their educational level, occupation, and tobacco and alcohol consumption. Weight and height were measured under standardized conditions with electronic weighing scales and stadiometers.⁸ The body mass index (BMI) was calculated as weight (in kg) divided by the square of the height (in m), and participants were divided into 3 groups: normal (BMI < 25), overweight (BMI 25–29.9), and obese (BMI ≥ 30).

Physical activity was evaluated with a validated index that combines activity at work and at leisure.¹² Participants were classified into 4 categories: inactive, moderately inactive, moderately active, and active. Diet was assessed using a computerized dietary history, developed from that used in the Spanish EPIC cohort.^{13,14} We evaluated the extent to which the diet of the participants fulfilled the main nutritional goals^{15,16} and was in line

with the Mediterranean diet pattern, as determined by a score equal to or greater than 9 in the MEDAS index.¹⁷

To assess the clinical management of PMS through lifestyle recommendations, the following questions were used¹¹: “Has your doctor or nurse ever advised you to a) do any physical activity, specifically, walk at least 30 min several days a week; b) lose weight; c) eat healthily, concentrating on fish, fruit, vegetables, legumes, and low-fat dairy products and reducing the consumption of red and processed meat, and d) reduce salt intake?”. The possible responses were “Yes, and I am currently following their advice”; “Yes, but I am not currently following their advice”, and “No”. Regarding giving up smoking, participants were asked “Has your doctor advised you to stop smoking?” and, additionally, if a specific program was prescribed to achieve smoking cessation.

Statistical Analysis

Analyses were carried out with 11 149 participants with complete information on the variables of interest. The prevalences of MS and PMS were estimated, as well as their corresponding 95% confidence intervals, in the entire population and in socio-demographic- and lifestyle-defined subgroups. Associations between level of education and occupation and MS and PMS were summarized using odds ratios and 95% confidence intervals obtained via age-adjusted logistic regression. To compare the prevalence of MS and PMS among autonomous communities, estimations were standardized by age and sex using the direct

Table 1

Prevalence of Metabolic Syndrome and Premorbid Metabolic Syndrome in the Spanish Population Aged 18 Years or Older in 2008–2010, According to Sex, Age, and Body Mass Index

	Patients, no.	MS, % (95%CI)	PMS, % (95%CI)
Total	11 149	22.7 (21.7–23.7)	16.9 (16.0–17.8)
<i>Age ranges</i>			
18–44 years	5757	11.2 (10.2–12.3)	10.4 (9.4–11.4)
45–64 years	3342	30.5 (28.6–32.5)	23.3 (21.6–25.1)
≥65 years	2050	42.3 (39.7–44.9)	24.9 (22.6–27.2)
<i>BMI</i>			
<25	4211	3.7 (3.0–4.4)	2.8 (2.2–3.4)
25–30	4385	21.9 (20.4–23.3)	16.6 (15.2–17.9)
≥30	2457	56.9 (54.5–59.3)	41.8 (39.3–44.2)
Men	5571	26.0 (24.6–27.5)	19.6 (18.4–20.9)
<i>Age ranges</i>			
18–44 years	2996	16.2 (14.5–17.9)	15.1 (13.5–16.8)
45–64 years	1680	36.2 (33.5–38.9)	26.0 (23.6–28.5)
≥65 years	895	39.5 (35.8–43.2)	22.7 (19.6–25.9)
<i>BMI</i>			
<25	1601	4.8 (3.6–6.0)	3.6 (2.6–4.6)
25–30	2585	21.4 (19.5–23.3)	16.2 (14.5–17.9)
≥30	1334	60.4 (57.1–63.8)	45.4 (42.1–48.7)
Women	5578	19.4 (18.1–20.8)	14.2 (13.0–15.4)
<i>Age ranges</i>			
18–44 years	2762	5.8 (4.8–6.8)	5.2 (4.2–6.2)
45–64 years	1662	24.8 (22.1–27.4)	20.5 (18.1–23.0)
≥65 years	1154	44.5 (40.90–48.1)	26.7 (23.4–29.9)
<i>BMI</i>			
<25	2609	3.0 (2.2–3.7)	2.3 (1.6–2.9)
25–30	1799	22.5 (20.2–24.8)	17.0 (15.0–19.1)
≥30	1123	52.7 (49.2–56.2)	37.5 (33.9–41.1)

95%CI, 95% confidence interval; BMI, body mass index; MS, metabolic syndrome; PMS, premorbid MS.

method. Significance was established with a bilateral *P* value <.05. The main analyses were performed with the survey method in Stata v.11.¹⁸

RESULTS

The prevalence of MS was 22.7% (26.0% in men and 19.4% in women). The frequency of MS increased with age, and was higher

Table 2

Frequency of Premorbid Metabolic Syndrome According to Lifestyle, Achievement of Nutritional Goals, and Adherence to the Mediterranean Diet in the Spanish Population Aged 18 Years or Older in 2008–2010 (n=11 149)

	Prevalence, % (95%CI)
<i>Smoking</i>	
Smokers	20.4 (18.6–22.2)
Exsmokers	16.1 (14.6–17.7)
Never smoked	16.2 (15.0–17.4)
<i>Physical activity</i>	
Inactive	19.5 (17.8–21.1)
Moderately inactive	17.7 (16.3–19.2)
Moderately active	16.1 (14.4–17.8)
Active	12.7 (10.7–14.7)
<i>Alcohol consumption</i>	
Exdrinkers	15.3 (12.1–18.6)
Nondrinkers	18.5 (17.2–19.8)
Moderate drinkers	15.9 (14.4–17.3)
Excessive drinkers	17.1 (15.2–18.8)
<i>Total carbohydrates ≥50% of energy intake</i>	
Yes	15.9 (13.8–18.0)
No	17.4 (16.5–18.4)
<i>Total fats ≤35% of energy intake</i>	
Yes	16.0 (14.7–17.3)
No	17.9 (16.9–19.1)
<i>Saturated fats ≤7% of energy intake</i>	
Yes	14.7 (11.6–17.9)
No	17.5 (16.4–18.3)
<i>Monounsaturated fats ≤20% of energy intake</i>	
Yes	17.0 (16.1–17.9)
No	19.0 (16.6–21.5)
<i>Polyunsaturated fats ≤5% of energy intake</i>	
Yes	17.0 (15.5–18.5)
No	17.3 (16.3–18.3)
<i>Proteins ≤15% of energy intake</i>	
Yes	16.7 (14.7–18.7)
No	17.3 (16.4–18.3)
<i>Fiber ≥25 g/d</i>	
Yes	16.7 (15.5–18.0)
No	17.5 (16.4–18.6)
<i>Sodium <2300 mg/d</i>	
Yes	15.7 (14.3–17.1)
No	17.9 (16.9–19.0)
<i>Cholesterol ≤300 mg/d</i>	
Yes	15.3 (13.9–16.4)
No	18.9 (17.7–20.0)
<i>MEDAS ≥9</i>	
Yes	15.1 (13.0–17.1)
No	17.5 (16.6–18.6)

95%CI, 95% confidence interval; MEDAS, Mediterranean Diet Adherence Screener. Data were adjusted by age and sex.

in men than in women up to 65 years; above this age, the frequency was higher in women. MS was also more frequent in men and women with higher BMIs (Table 1). The frequency of PMS was 16.9% (19.6% in men and 14.2% in women). The distribution of PMS by sex, age, and BMI was similar to that of MS (Table 1).

In the sex- and age-adjusted analyses, the frequency of PMS was higher in smokers and was reduced with increased physical activity (Table 2). In contrast, the frequency of PMS was higher in participants whose diet failed to fulfill most of the main nutritional goals and was not in line with the Mediterranean diet pattern (MEDAS<9 points) (Table 2). The prevalence of MS and PMS showed an inverse association with educational level and was higher in manual than in nonmanual workers; these associations were slightly stronger in women than in men (Figure 1).

Abdominal obesity and high blood pressure were the 2 most frequent components of MS and PMS, although high blood pressure and obesity predominated among men and women, respectively. The frequency with which high blood pressure and blood glucose were components of MS and PMS increased with age, whereas the opposite occurred with dyslipidemia (Table 3).

The prevalence of MS and PMS in the autonomous community with the highest prevalence was approximately twice that of the community with the lowest prevalence (Figure 2). The autonomous communities of the Region of Murcia, Balearic Islands, Extremadura, and Canary Islands showed the highest prevalence of MS among men, whereas those regions with the highest prevalence among women were Extremadura, Region of Murcia, Canary Islands, and Andalusia (Figure 2). For PMS, the Principality of Asturias and Extremadura showed the highest prevalence in both sexes, together with the Region of Murcia and Balearic Islands in men and Andalusia and the Canary Islands in women (Figure 2).

Approximately one third of patients with PMS stated that they had not received health care recommendations to improve their lifestyles, such as to increase physical activity, reduce fat and cholesterol intake, lose weight, reduce dietary salt, and quit smoking (for smokers). Moreover, only 18.7% of smokers with PMS received advice on stopping smoking that was accompanied by a specific program supporting smoking cessation. Among those who received advice, adherence was low, particularly for weight loss (31.9%) and salt intake reduction (38.3%) (Table 4).

DISCUSSION

This study shows that almost a quarter of Spanish adults has MS and almost a fifth has PMS. Our results also reveal marked geographical differences in the distribution of these syndromes and substantial opportunities for improving the clinical management of PMS.

The frequencies of MS and PMS in the ENRICA study were lower than those found in the DARIOS study, which reached 31% and 34%, respectively, in persons aged 35 to 74 years.⁵ However, these data are not directly comparable because they correspond to different age groups and because the DARIOS study only included data from 10 autonomous communities. Our prevalence rates were also lower than those of the di@bet.es study, which reported an MS prevalence of 42% in men and 32.3% in women⁶; the higher prevalence of MS in the di@bet.es study may be due to the use of lower cutoff values for waist circumference (>94.5 cm for men and >89.5 cm for women) and because the mean age of the participants in the di@bet.es study was about 5 years higher than in the present study. Finally, the prevalence of MS in our study was also lower

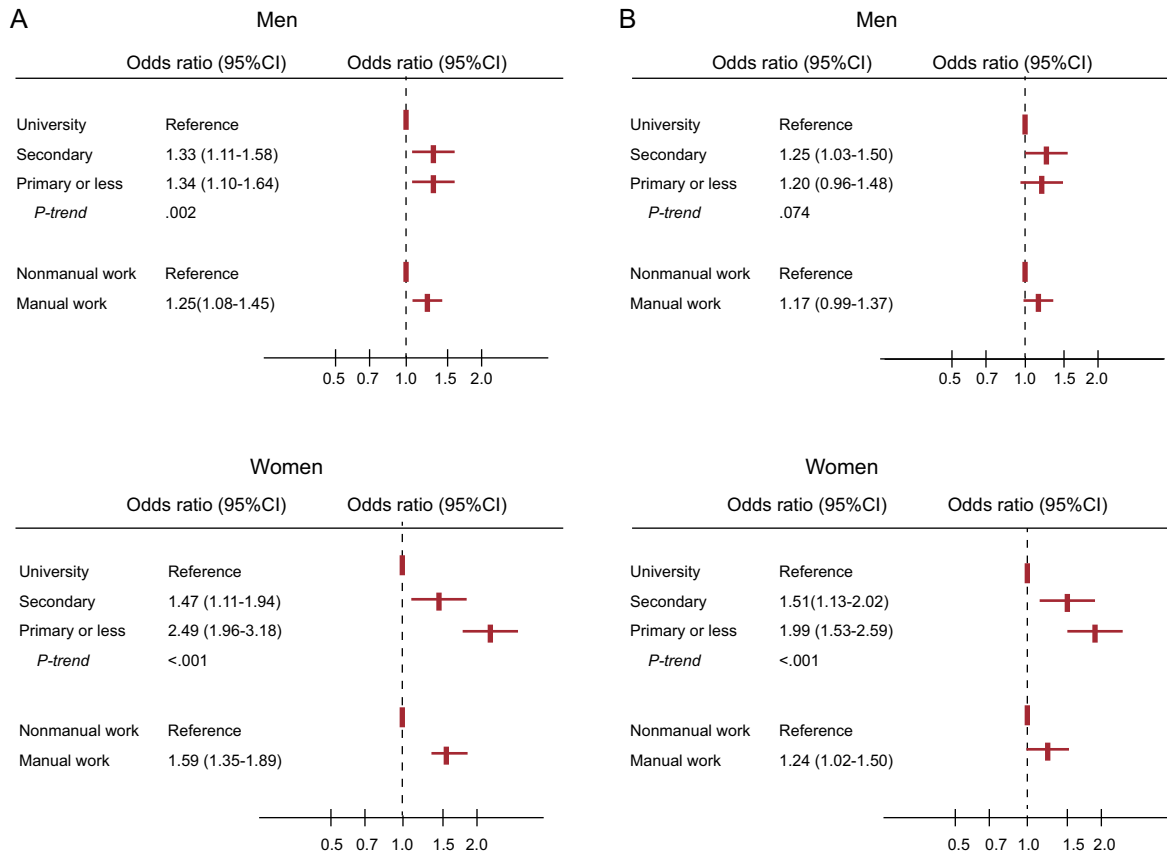


Figure 1. Odds ratios for metabolic syndrome (A) and premetabolic syndrome (B), according to education level and type of occupation, by sex. The results were adjusted by age. 95%CI, 95% confidence interval.

Table 3

Percentage of Cases of Metabolic Syndrome and Premorbid Metabolic Syndrome Showing Each of the Component Factors in the Spanish Population Aged 18 Years or Older in 2008-2010, According to Sex and Age

	Metabolic syndrome (n=2531), %				Premorbid metabolic syndrome (n=1187), %			
	Total	18-44 years	45-64 y	≥65 years	Total	18-44 years	45-64 y	≥65 years
<i>Men</i>								
Waist circumference ≥102 cm	76.7	72.8	76.4	82.4	75.2	72.6	74.8	82.1
Blood glucose level ≥100 mg/dL or antidiabetic drugs	65.7	39.8	73.9	87.2	55.2	35.9	64.2	79.3
Triglyceride level ≥150 mg/dL	61.5	74.9	63.4	39.8	66.7	75.0	67.8	45.7
HDL-C level <40 mg/dL	55.3	70.3	50.5	43.1	56.5	70.4	49.2	41.0
Blood pressure ≥130/85 mmHg or antihypertensive drugs	90.3	82.6	92.9	96.5	89.3	83.4	92.6	95.3
<i>Women</i>								
Waist circumference ≥88 cm	92.9	89.2	92.8	94.2	93.4	89.2	93.1	95.8
Blood glucose level ≥100 mg/dL or antidiabetic drugs	66.5	42.3	63.8	76.1	55.8	36.3	57.6	63.0
Triglyceride level ≥150 mg/dL	43.5	51.6	43.5	41.1	45.5	50.0	45.3	43.7
HDL-C level <50 mg/dL	63.1	85.6	63.2	55.9	64.7	87.9	63.9	54.2
Blood pressure ≥130/85 mmHg or antihypertensive drugs	86.9	69.3	83.5	95.1	84.5	70.7	82.2	93.4

HDL-C, high-density lipoprotein cholesterol.

than that in the United States, which was 36.1% in men and 32.4% in women according to the harmonized definition.¹⁹ This rate is in line with the higher prevalence of general obesity in the United States, which was 34% in the United States in 2007-2008,²⁰ and compares to 23% in Spain in 2008-2010.⁸

The distribution of MS by age, sex, and socioeconomic status (education or occupation) is because the MS epidemic is largely the result of the obesity epidemic. Accordingly, as for general obesity,

the frequency of MS in individuals younger than 65 years was higher in men than in women.⁸ The predominance of obesity and MS in young and middle-aged men is due to a greater increase in obesity among men than women in Spain in recent decades.²¹ In contrast, as for general obesity, the socioeconomic gradient of MS was higher in women than in men.^{8,22} The reasons for this disparity are not well known, although the desire to be slim may be greater for women, particularly in higher social classes; in addition, a

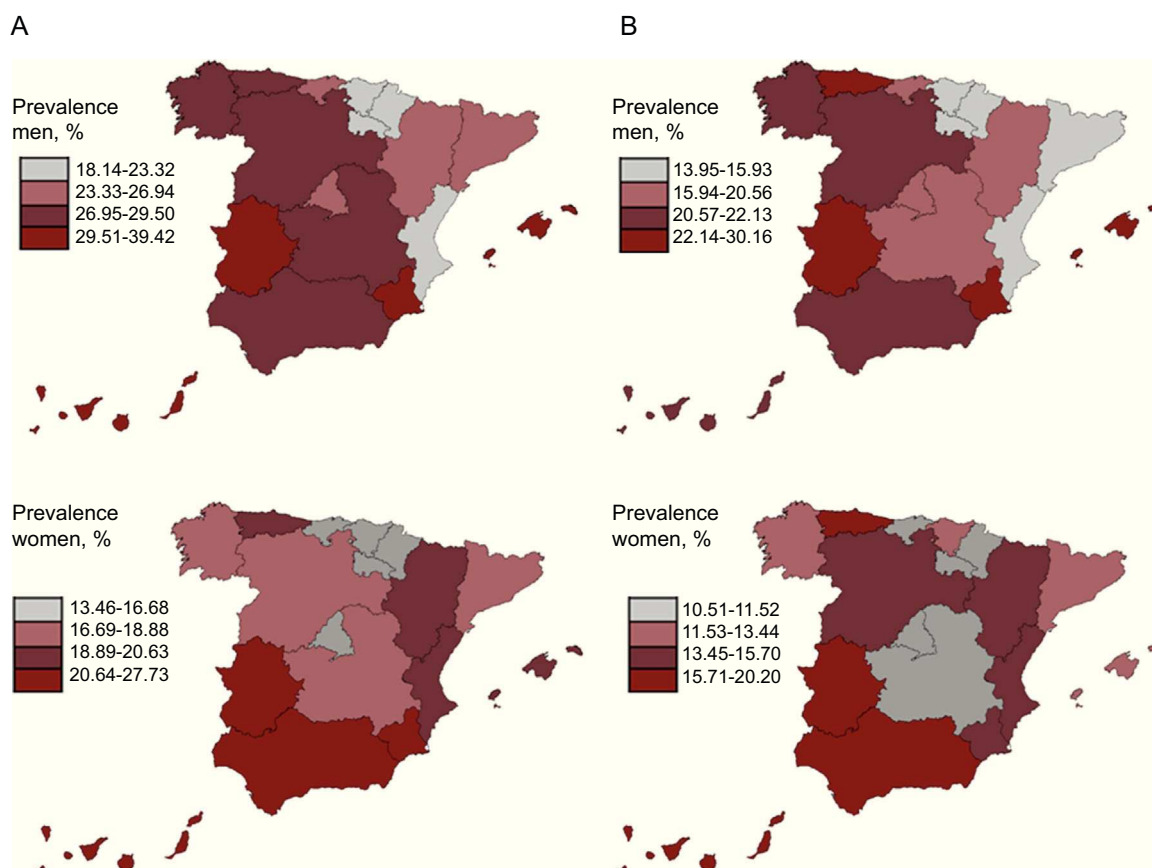


Figure 2. Prevalence of metabolic syndrome (A) and premorbid metabolic syndrome (B) in the Spanish population aged 18 years or older from 2008 to 2010, by autonomous community. Autonomous communities were classified into quartiles of prevalence. The analysis was standardized by sex and age.

Table 4

Health Advice on Lifestyle for Patients With Premorbid Metabolic Syndrome in Spain, 2008–2010 (n=1887)

	Distribution, % (95%CI)
<i>Advice on physical activity</i>	
Received advice and are following it	42.7 (39.9–45.3)
Received advice and are not following it	22.6 (20.3–24.8)
Did not receive advice	34.8 (32.3–37.3)
<i>Advice on diet low in fat and cholesterol</i>	
Received advice and are following it	62.5 (59.9–65.0)
Received advice and are not following it	8.2 (6.8–9.6)
Did not receive advice	29.3 (26.9–31.7)
<i>Advice on weight loss</i>	
Received advice and are following it	31.9 (29.4–34.3)
Received advice and are not following it	29.3 (26.9–31.7)
Did not receive advice	38.8 (36.1–41.5)
<i>Advice on reducing salt intake</i>	
Received advice and are following it	38.3 (35.8–40.9)
Received advice and are not following it	6.7 (5.5–7.9)
Did not receive advice	54.9 (52.4–57.5)
<i>Advice on giving up smoking</i>	
Received advice ^a	74.5 (69.9–79.0)
Received advice and a specific program ^b	18.7 (13.9–23.5)
Did not receive advice	25.5 (21.0–30.0)

95%CI, 95% confidence interval.

^a Calculated from 499 participants with premorbid metabolic syndrome who smoked.^b Calculated from 372 participants with premorbid metabolic syndrome who smoked and received advice.

larger body size may be an indicator of masculinity and physical power for men, independent of social status.²³ Our results on the distribution of MS by age and sex are consistent with previous results from Spain⁶ and the United States,²⁰ like those observed for the socioeconomic gradient.^{5,6,20}

PMS was associated with unhealthy lifestyles, particularly smoking, poor quality diet, and physical inactivity. This association was expected because some of these lifestyle habits, such as diet and physical activity, contribute to the pathogenesis of obesity. Our results also support the preferential use of lifestyle management in the control of PMS.

The 2 most common components of MS and PMS were abdominal obesity and high blood pressure. This finding is due to the high prevalence of abdominal obesity, which was 36%,⁸ and hypertension ($\geq 140/90$ mmHg or antihypertensive treatment), which was 33%,¹⁰ among persons aged 18 years or older in 2008 to 2010 in Spain. This result also indicates that central obesity could play a major role in the pathogenesis of MS. Moreover, the higher frequency of altered blood glucose as a component of MS with an increase in age reflects the progressive deterioration of pancreatic function as well as the increase in insulin resistance due to age-associated fat infiltration of the muscle and liver.

Our study is the first to completely characterize the variations in the frequency of MS and PMS among autonomous communities. As expected, in the age- and sex-standardized analyses, the regional frequency of MS strongly correlated with that of general abdominal obesity (Pearson's correlation, $r=0.4$ in men and $r=0.73$ in women). Moreover, the communities of the south of Spain and the Balearic and Canary Islands have shown a higher frequency of obesity and higher cardiovascular risk for many decades.^{24,25} Some factors associated with lifestyle (such as sedentary behavior, poor diet quality, and greater tobacco consumption) and, in particular, a lower socioeconomic level are a likely cause of the higher

cardiovascular risk in these regions.²⁶ The marked geographical variations in the frequency of PMS in Spain reveal a huge potential for prevention that has remained unexploited for many years. The current economic difficulties should not impede public authorities from promoting socioeconomic development and health interventions aimed at reducing health inequalities in Spain.

Finally, our study showed considerable deficiencies in lifestyle interventions, which are key to the clinical management of patients with PMS. Other studies in Europe, which also included Spanish patients, showed shortcomings in behavioral interventions for cardiometabolic risk in primary prevention.²⁷ The good news is that there is evidence that patient education and reorientation of health care systems (eg, enhancement of electronic medical records, teamwork, clinical follow-up) can reduce blood glucose, blood pressure, and cholesterol in patients at high cardiometabolic risk.²⁸

Strengths and Limitations

This study has a number of limitations and strengths. One limitation is a possible underestimation of the prevalence of MS and PMS because we omitted the institutionalized population, a group that usually has a greater number of cardiometabolic RFs. Another limitation is that the information concerning health advice on lifestyles was based on patient reports, which may be subject to errors in interpretation and memory. Among the strengths of the study are the large sample size and its representativeness of the adult population of an entire country. In this regard, the response rate in the ENRICA study was among the highest of the surveys monitoring population health performed in Europe.²⁹ In addition, the age, sex, and socioeconomic structure of the sample mirrors that of the Spanish population.⁷ Moreover, similar results were found for variables covered by comparable questions in both the ENRICA study and the European Health Survey in Spain 2009.³⁰ For example, the prevalences of diagnosed DM, diagnosed hypertension, and smoking in the ENRICA study and in the European Health Survey in Spain 2009 were 5.5% and 5.9%, 19.8% and 17.5%, and 27.5% and 29.9%, respectively. Other strengths are that the anthropometry and blood pressure measurements were performed under standardized conditions and that all analytical measurements were done in the same laboratory with appropriate quality controls.

CONCLUSIONS

This study shows a high proportion of Spanish adults with MS and PMS, conditions that carry a high relative risk of DM and CVD in the short- and medium-term. Unless the obesity epidemic is controlled and action is taken on unhealthy lifestyles through clinical strategies and public health, the high frequency of MS and PMS could threaten the achievements made in recent decades in the control of coronary heart disease in Spain.³¹ Our results also illustrate the need to improve lifestyle interventions in patients with MS and PMS in primary health care.

FUNDING

The data for this analysis came from the ENRICA study, which was financed by Sanofi-Aventis. Specific funding for this analysis came from the FIS PI12/1166 and PI11/01379 projects and from the "UAM Chair in Epidemiology and Control of Cardiovascular Risk". This study was directed by an independent scientific committee.

CONFLICTS OF INTEREST

M. Teresa Aguilera is an employee of Sanofi-Aventis. However, Sanofi-Aventis does not currently market any product for the treatment of MS.

REFERENCES

- Oda E. Metabolic syndrome: its history, mechanisms, and limitations. *Acta Diabetol.* 2012;49:89–95.
- Mottillo S, Filion KB, Genest J, Joseph L, Pilote L, Poirier P, et al. The metabolic syndrome and cardiovascular risk: a systematic review and meta-analysis. *J Am Coll Cardiol.* 2010;56:1113–32.
- Simmons RK, Alberti KG, Gale EA, Colagiuri S, Tuomilehto J, Qiao Q, et al. The metabolic syndrome: useful concept or clinical tool? Report of a WHO Expert Consultation. *Diabetologia.* 2010;53:600–5.
- Alberti KG, Eckel RH, Grundy SM, Zimmet PZ, Cleeman JI, Donato KA, et al. Harmonizing the metabolic syndrome: a joint interim statement of the International Diabetes Federation Task Force on Epidemiology and Prevention; National Heart, Lung, and Blood Institute; American Heart Association; World Heart Federation; International Atherosclerosis Society; and International Association for the Study of Obesity. *Circulation.* 2009;120:1640–5.
- Fernández-Bergés D, Cabrera de León A, Sanz H, Elosua R, Guembe MJ, Alzamora M, et al. Síndrome metabólico en España: prevalencia y riesgo coronario asociado a la definición armonizada y a la propuesta por la OMS. *Estudio DARIOS.* *Rev Esp Cardiol.* 2012;65:241–8.
- Marcuello C, Calle-Pascual AL, Fuentes M, Runkle I, Rubio MA, Montañez C, et al. Prevalence of the metabolic syndrome in Spain using regional cutoff points for waist circumference: the di@bet.es study. *Acta Diabetol.* 2013;50:615–23.
- Rodríguez-Artalejo F, Graciani A, Guallar-Castillón P, León-Muñoz LM, Zuluaga MC, López-García E, et al. Justificación y métodos del estudio sobre nutrición y riesgo cardiovascular en España (ENRICA). *Rev Esp Cardiol.* 2011;64:876–82.
- Gutiérrez-Fisac JL, Guallar-Castillón P, León-Muñoz LM, Graciani A, Banegas JR, Rodríguez-Artalejo F. Prevalence of general and abdominal obesity in the adult population of Spain, 2008–2010: the ENRICA study. *Obes Rev.* 2012;13:388–92.
- Navarro-Vidal B, Banegas JR, León-Muñoz LM, Rodríguez-Artalejo F, Graciani A. Achievement of cardiometabolic goals among diabetic patients in Spain. A nationwide population-based study. *PLoS One.* 2013;8:e61549.
- Banegas JR, Graciani A, De la Cruz-Troca JJ, León-Muñoz LM, Guallar-Castillón P, Coca A, et al. Achievement of cardiometabolic goals in aware hypertensive patients in Spain: a nationwide population-based study. *Hypertension.* 2012;60:898–905.
- Guallar-Castillón P, Gil-Montero M, León-Muñoz LM, Graciani A, Bayán-Bravo A, Taboada JM, et al. Magnitud y manejo de la hipercolesterolemia en la población adulta de España, 2008–2010, el estudio ENRICA. *Rev Esp Cardiol.* 2012;65:551–8.
- Wareham NJ, Jakes RW, Rennie KL, Schuit J, Mitchell J, Hennings S, et al. Validity and repeatability of a simple index derived from the short physical activity questionnaire used in the European Prospective Investigation into Cancer and Nutrition (EPIC) study. *Public Health Nutr.* 2003;6:407–13.
- EPIC Group of Spain. Relative validity and reproducibility of a diet history questionnaire in Spain. I. Foods. EPIC Group of Spain. European Prospective Investigation into Cancer and Nutrition. *Int J Epidemiol.* 1997;26 Suppl 1:S91–9.
- EPIC Group of Spain. Relative validity and reproducibility of a diet history questionnaire in Spain. II. Nutrients. EPIC Group of Spain. European Prospective Investigation into Cancer and Nutrition. *Int J Epidemiol.* 1997;26 Suppl 1:S100–9.
- Sociedad Española de Nutrición Comunitaria. Objetivos nutricionales intermedios y a largo plazo para la población española [accessed 2013 Jul 21]. Available at: http://www.nutricioncomunitaria.org/BDProtegidos/Consenso%20de%20la%20Sociedad%20Española%20de%20Nutrición%20Comunitaria_L_1155041570239.pdf
- Swain JF, McCarron PB, Hamilton EF, Sacks FM, Appel LJ. Characteristics of the diet patterns tested in the Optimal Macronutrient Intake Trial to Prevent Heart Disease (OmniHeart): options for a heart-healthy diet. *J Am Diet Assoc.* 2008;108:257–65.
- Schroder H, Fitó M, Estruch R, Martínez González MA, Corella D, Salas Salvadó J, et al. A short screener is valid for assessing Mediterranean diet adherence among older Spanish men and women. *J Nutr.* 2011;141:1140–5.
- Stata Corp. Stata survey data reference manual. Release 11. College Station Stata Press. 2009.
- Ford ES, Li C, Zhao G. Prevalence and correlates of metabolic syndrome based on a harmonious definition among adults in the US. *J Diabetes.* 2010;2:180–93.
- Flegal KM, Carroll MD, Ogden CL, Curtin LR. Prevalence and trends in obesity among US adults, 1999–2008. *JAMA.* 2010;303:235–41.
- Salcedo V, Gutiérrez-Fisac JL, Guallar-Castillón P, Rodríguez-Artalejo F. Trends in overweight and misperceived overweight in Spain from 1987 to 2007. *Int J Obes (Lond).* 2010;34:1759–65.
- Roskam AJ, Kunst AE, Van Oyen H, Demarest S, Klumbiene J, Regidor E, et al. Comparative appraisal of educational inequalities in overweight and obesity among adults in 19 European countries. *Int J Epidemiol.* 2010;39:392–404.
- McLaren L. Socioeconomic status and obesity. *Epidemiol Rev.* 2007;29:29–48.
- Gutiérrez-Fisac JL, Rodríguez-Artalejo F, Guallar-Castillón P, Banegas Banegas JR, Del Rey Calero J. Determinants of geographical variations in body mass index (BMI) and obesity in Spain. *Int J Obes Relat Metab Disord.* 1999;23:342–7.
- Rodríguez-Artalejo F, Guallar-Castillón P, Banegas Banegas JR, Gutiérrez-Fisac JL, Del Rey Calero J. The association between mortality from ischaemic heart disease and mortality from leading chronic diseases. *Eur Heart J.* 2000;21:1841–52.
- Rodríguez-Artalejo F, Banegas JR, García Colmenero C, Del Rey Calero J. Lower consumption of wine and fish as a possible explanation for higher ischaemic heart disease mortality in Spain's Mediterranean region. *Int J Epidemiol.* 1996;25:196–201.
- Banegas JR, López-García E, Dallongeville J, Guallar E, Halcox JP, Borghi C, et al. Achievement of treatment goals for primary prevention of cardiovascular disease in clinical practice across Europe: the EURIKA study. *Eur Heart J.* 2011;32:2143–52.
- Tricco AC, Ivers NM, Grimshaw JM, Moher D, Turner L, Galipeau J, et al. Effectiveness of quality improvement strategies on the management of diabetes: a systematic review and meta-analysis. *Lancet.* 2012;379:2252–61.
- Aromaa A, Koponen P, Tafforeau J, Vermeire C. Evaluation of Health Interview Surveys and Health Examination Surveys in the European Union. *Eur J Public Health.* 2003;13(3 Suppl):67–72.
- Instituto Nacional de Estadística. Encuesta Europea de Salud en España de 2009 [accessed 2013 Jul 21]. Available at: <http://www.ine.es/jaxi/menu.do?type=p-caxis&path=%2Ft15/p420&file=inebase>
- Orozco-Beltran D, Cooper RS, Gil-Guillen V, Bertomeu-Martinez V, Pita-Fernandez S, Durazo-Arvizu R, et al. Tendencias en mortalidad por infarto de miocardio. Estudio comparativo entre España y Estados Unidos: 1990–2006. *Rev Esp Cardiol.* 2012;65:1079–85.