

Original article

Survival and Neurologic Outcome After Out-of-hospital Cardiac Arrest. Results of the Andalusian Out-of-hospital Cardiopulmonary Arrest Registry



Fernando Rosell Ortiz,^{a,b,*} Francisco Mellado Vergel,^c Juan Bautista López Messa,^d Patricia Fernández Valle,^a María M. Ruiz Montero,^{a,b} Manuela Martínez Lara,^{a,b} Santiago Vergara Pérez,^{a,b} Itziar Vivar Díaz,^{a,b} Auxiliadora Caballero García,^b Ángel García Alcántara,^e and Javier García del Águila^{a,b}

^a Empresa Pública de Emergencias Sanitarias de Andalucía, Consejería de Salud, Junta de Andalucía, Sevilla, Spain

^b Grupo de Cuidados Cardiológicos en Emergencias, Empresa Pública de Emergencias Sanitarias de Andalucía, Málaga, Spain

^c Servicio de Urgencias, Hospital El Toyo, Retamar, Almería, Spain

^d Unidad de Cuidados Intensivos, Hospital Río Carrión, Palencia, Spain

^e Unidad de Cuidados Intensivos, Hospital Clínico Virgen de La Victoria, Málaga, Spain

Article history:

Received 4 June 2015

Accepted 30 September 2015

Available online 29 January 2016

Keywords:

Out-of-hospital cardiopulmonary arrest

Sudden cardiac death

Emergency services

Survival

Neurologic outcome

ABSTRACT

Introduction and objectives: There is a paucity of data on prehospital cardiac arrest in Spain. Our aim was to describe the incidence, patient characteristics, and outcomes of out-of-hospital emergency care for this event.

Methods: We conducted a retrospective analysis of a prospective registry of cardiopulmonary arrest handled by an out-of-hospital emergency service between January 2008 and December 2012. The registry included all patients considered to have a cardiac etiology as the cause of arrest, with a descriptive analysis performed of general patient characteristics and factors associated with good neurologic outcome at hospital discharge.

Results: A total of 4072 patients were included, with an estimated incidence of 14.6 events per 100 000 inhabitants and year; 72.6% were men. The mean age was 62.0 ± 15.8 years, 58.6% of cases occurred in the home, 25% of patients had initial defibrillable rhythm, 28.8% of patients arrived with a pulse at the hospital (58.3% of the group with defibrillable rhythm), and 10.2% were discharged with good neurologic outcome. The variables associated with this recovery were: witnessed arrest ($P = .04$), arrest witnessed by emergency team ($P = .005$), previous life support ($P = .04$), initial defibrillable rhythm ($P = .0001$), and performance of a coronary interventional procedure ($P = .0001$).

Conclusions: More than half the cases of sudden cardiac arrest occur at home, and the population was found to be relatively young. Although recovery was satisfactory in 1 out of every 10 patients, there is a need for improvement in the phase prior to emergency team arrival. Coronary interventional procedures had an impact on patient prognosis.

© 2015 Sociedad Española de Cardiología. Published by Elsevier España, S.L.U. All rights reserved.

Supervivencia y estado neurológico tras muerte súbita cardiaca extrahospitalaria. Resultados del Registro Andaluz de Parada Cardiorrespiratoria Extrahospitalaria

RESUMEN

Introducción y objetivos: No hay demasiados datos sobre la muerte súbita prehospitalaria en España. El objetivo es describir su incidencia, las características de los pacientes y los resultados de su atención por un servicio de emergencias extrahospitalario.

Métodos: Análisis retrospectivo de un registro prospectivo de parada cardiorrespiratoria atendida por un servicio de emergencias extrahospitalario entre enero de 2008 y diciembre de 2012. Se incluyó a todos los pacientes con estimación de etiología cardiaca como causa de la parada. Se realizó análisis descriptivo de las características generales de los pacientes y de los factores asociados con alta hospitalaria con buen estado neurológico.

Resultados: Se incluyó a 4.072 pacientes, con una incidencia estimada de 14,6 eventos por 100.000 habitantes y año, el 72,6% varones. La media de edad era $62,0 \pm 15,8$ años. El 58,6% de los casos ocurrieron en domicilio. El 25% de los pacientes tenían un ritmo inicial desfibrilable. El 28,8% de los pacientes llegaron con pulso al hospital, el 58,3% del grupo con ritmo desfibrilable. El 10,2% recibió el alta en buen estado neurológico. Las variables asociadas con esta recuperación fueron: parada presenciada ($p = 0,04$), parada

Palabras clave:

Parada cardiorrespiratoria extrahospitalaria

Muerte súbita cardiaca

Servicios de emergencias

Supervivencia

Estado neurológico

* Corresponding author: Servicio Provincial 061, Ctra. de Ronda 226, 6.ª planta, 04005 Almería, Spain.
E-mail address: frosell@al.epes.es (F. Rosell Ortiz).

presenciada por el equipo de emergencias ($p = 0,005$), realización previa de soporte vital ($p = 0,04$), ritmo inicial desfibrilable ($p = 0,0001$) y realización de intervencionismo coronario ($p = 0,0001$).

Conclusiones: Más de la mitad de los casos de muerte súbita ocurren en el domicilio. Afectan a una población relativamente joven. Aunque 1 de cada 10 pacientes tuvo una recuperación satisfactoria, la fase previa a la llegada de los equipos de emergencias debe mejorar. El intervencionismo coronario tuvo gran impacto en el pronóstico de los pacientes.

© 2015 Sociedad Española de Cardiología. Publicado por Elsevier España, S.L.U. Todos los derechos reservados.

Abbreviations

CPA: cardiopulmonary arrest
 CPC: Cerebral Performance Category
 ET: emergency team
 PCI: percutaneous coronary intervention
 SCD: sudden cardiac death

INTRODUCTION

Cardiovascular diseases are the main cause of death in Spain.¹ Among them, there are high rates of ischemic heart disease with sudden cardiac death (SCD) as the most common form of death.^{2,3} Overall estimates of the incidence of cardiopulmonary arrest (CPA) in general and of SCD in particular vary widely in every country,⁴ mainly because the estimates are based on calculations that use different information sources, which can entail a certain margin of error.⁵ Similar to incidence, survival after out-of-hospital CPA varies considerably between countries with similar health care structures.^{6,7} Consequently, it is not uncommon to express CPA incidence and outcomes in relation to out-of-hospital emergency service care.⁸

Around 8 out of every 10 sudden cardiac arrests are known to be of cardiac etiology (or more generally, cardiovascular) and could be labeled as SCD.^{9,10} Hence, out-of-hospital CPAs are traditionally always attributed to a cardiac etiology unless a specific cause is clearly identified.¹¹

Although some general results on out-of-hospital CPA in Spain have been published in recent years,^{12–14} there is no known figure on the true incidence of SCD in Spain. Information is also lacking on the final outcomes of patients who had an out-of-hospital CPA of possible cardiovascular cause.

The aim of this study was to describe the incidence and characteristics of out-of-hospital SCD seen by emergency teams (ETs) and the outcomes at hospital discharge in terms of survival and neurologic outcome.

METHODS

A retrospective analysis was conducted of a continuous registry of patients attended by out-of-hospital ETs for CPA between January 2008 and December 2012. The characteristics and methodology of the registry have been described previously.¹³ Briefly, the *Registro Andaluz de Parada Cardíaca Extrahospitalaria* (Andalusian Registry of Out-of-hospital Cardiac Arrest) is a prospective, ongoing registry of CPA cases seen by ETs of the *Empresa Pública de Emergencias Sanitarias de Andalucía* (EPES, Public Health Emergency Company of Andalusia). This public health service handles out-of-hospital health emergencies in Andalusia, with an actual catchment population of 5 575 128 inhabitants (67.14% of the population, as the total for Andalusia is 8 302 923). Its ETs have an on-board physician.

Inclusion Criteria and Methods

The registry is included in the EPES general information system. The information system is a real-time record of all calls and responses provided throughout Andalusia. The information system meets the legal requirements for personal data security and protection set forth in the Spanish legislation. The cardiopulmonary arrest registry automatically includes all cases in which the medical history of the encounter includes a diagnosis of CPA or ventricular fibrillation (ICD-9 [International Classification of Diseases, Ninth Revision, Clinical Modification]). These codes are recorded in the information system and are the link for automatic inclusion of the case. Along with the case, a series of variables are automatically recorded in the information system. Other variables are manually entered in the database by accessing the electronic medical records. The variables collected include epidemiology variables, prehospital event and care, hospitalization (use of hypothermia and percutaneous coronary intervention [PCI]), and final outcome, including neurologic outcome. The variables were defined using the Utstein model.¹¹

In-hospital follow-up of patients was performed using the unified electronic medical record of the *Servicio Andaluz de Salud*. Follow-up at discharge was performed by a standard telephone survey, centralized for all of Andalusia, from an EPES coordination center. The survey asked patients for consent to an interview and to use of their data. Access to the national death certificate center of the Spanish Ministry of Health is requested every year.

Quality Assurance

Patients were included according to a design intended to minimize professional intervention and to avoid inclusion and interpretation biases. The database includes internal controls to minimize transcription errors. Every 6 months, the EPES quality system audits a representative sample of medical records to check the diagnosis and degree of completion of key CPA variables.

Statistical Analysis

A descriptive analysis was performed by measures of central tendency and measures of scatter for quantitative variables and by absolute and relative distribution frequency for qualitative variables. A univariate analysis was used to compare the individual effect of each variable on the possibility of arriving with a pulse at the hospital and of good neurologic outcome at hospital discharge, expressed as Cerebral Performance Category grades 1 and 2¹⁵ (CPC 1-2). The Student *t* test was used to compare the means, and the chi-square and Fisher tests were used for categorical variables. A multivariable logistic regression analysis was performed using CPC 1-2 at hospital discharge as a dependent variable. Variables with a *P* value < .1 in the bivariate analysis and less than 5% of losses were included by the forward stepwise method, also including the odds ratio (OR) and the respective 95% confidence intervals (95%CI). Significance was set at *P* < .05 for the various analyses.

A bivariate analysis was performed to compare patients who arrived at the hospital with patients who died *in situ* and to compare the group of patients with CPC 1-2 at hospital discharge with the group with poor (CPC 3-4) or unknown neurologic outcome or in-hospital death. Logistic regression was performed using a forward stepwise multivariable analysis, with arrival with a pulse at the hospital taken as the dependent variable. Likewise, forward stepwise multivariable logistic regression was performed for the group of patients who arrived at the hospital, taking CPC 1-2 neurologic outcome at hospital discharge as the dependent variable.

RESULTS

During the period analyzed, 15 517 patients were attended in a situation of CPA and/or death. In 65.3% of these patients, the ETs only recorded patient death (by diagnosing instantaneous death or unattended death, ICD-9 codes 798.1 and 798.9, respectively). Advanced life support measures were begun in 34.6% of all patients but were stopped in 323 (2.1%) patients because the measures were considered futile. Among 5067 patients who finally received advanced life support, arrest was considered to be of cardiac etiology in 4072 (80.4%) (Figure).

The age range was 0 to 96 years: 199 patients (4.9%) were < 35 years old, 14 of them in the first year of life; 2884 (70.8%) were between 35 and 74 years old, and 989 (24.3%) ≥ 75 years old.

Based on the catchment population with EPES land-based ETs, the incidence recorded was 14.6 SCD events per 100 000 inhabitants and year (10.6% men and 4.0% women): 8.0 and 2.7 cases per 100 000 inhabitants and year of men and women between 35 and 74 years, respectively.

Men accounted for 72.6% of these patients, 25% of arrests were treated with initial defibrillable rhythm, and 32.5% of patients arrived at the hospital, although 3.7% arrived while resuscitation measures were still underway, ie, without spontaneous pulse at hospital arrival. In this group, only 1 patient was discharged from the hospital. Among patients with an initial defibrillable rhythm, up to 58.3% arrived at the hospital with a pulse. Among all patients who arrived at the hospital with a pulse, 266 patients (20.1%) required no orotracheal intubation.

In the phase prior to ET arrival, excluding arrests witnessed by health professionals, basic life support measures were performed by witnesses in 20.9% of patients. Automatic defibrillators were used in 75 patients, on 5 occasions by lay witnesses.

Final survival at discharge for the entire series was 11.2% and 10.2% of patients had good neurologic outcome (CPC 1-2). Among these patients with good neurological outcome at discharge, 43.1% were not intubated during prehospital care. The general patient and care characteristics are shown in Table 1.

The variables associated with the probability of patients arriving alive at the hospital or arrival with a pulse are listed in Table 2. During hospitalization, 20 patients were treated with hypothermia and 249 patients underwent PCI.

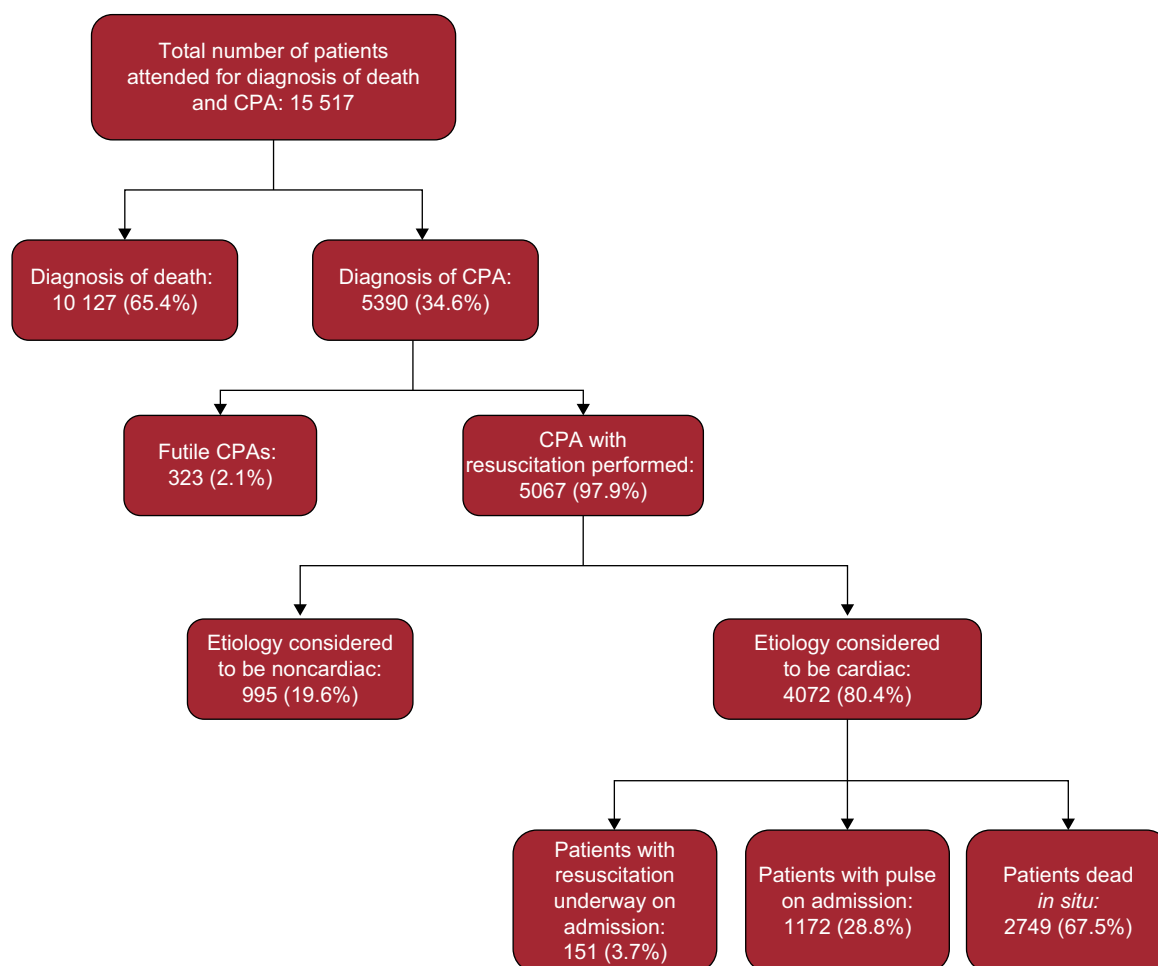


Figure. Flow chart for patients included in the analysis (January 2008-December 2012). CPA, cardiopulmonary arrest.

Table 1

Descriptive Analysis: General Characteristics of the Population and the Care Received

Variables	Distribution
Patients included, No.	4072
Age, y	62.0 ± 15.8
Men	61.4 ± 14.9
Women	65.1 ± 17.7
Men/women, %	72.6/27.4
Reason for call	
Unconscious/suspected CPA	2790 (68.6)
Chest pain	393 (9.6)
Dyspnea	378 (9.3)
Syncope	193 (4.7)
Other	318 (7.8)
Place of arrest	
Home	2311 (56.8)
Street	513 (18.6)
Public place	707 (17.4)
Out-of-hospital health services	334 (8.2)
OOHEP ambulance	74 (1.8)
Unknown	133 (3.2)
Witnessed arrest	2980 (73.2)
Lay witnesses	1784 (62.9)
Emergency team	600 (20.1)
Other health personnel	500 (17.8)
Unknown	96 (3.2)
Other	83 (3.7)
LS prior to ET	2043 (50.2)
Health personnel	1307 (64.0)
Witnesses	620 (30.3)
Nonhealth public services	116 (5.7)
Defibrillations prior to ET arrival, No.	303
With SAD, No.	75
Initial recorded rhythm	4072 (100)
Defibrillable: pulseless VF/VT	1017 (25)
Nondefibrillable	3055 (75)
Asystole	2526 (82.7)
PEA	300 (9.8)
Extreme bradycardia	162 (5.3)
Unknown	67 (2.2)
Collapse-to-ET arrival time recorded	2791 (80.4)
Time, min [*]	12 [8-19]
Call-to-arrival interval of the ET recorded	3961 (97.8)
Time, min	12 [8-19]
Patients alive on hospital admission	1172 (28.8)
Resuscitation in progress on admission	151 (3.7)
Patients with initial VF rhythm alive on admission	561 (58.3)
Alive at hospital discharge	472 (11.6)
CPC 1 at discharge	375 (9.2)
CPC 2 at discharge	42 (1)
CPC 3 at discharge	27 (0.7)
CPC 4 at discharge	21 (0.6)
Unknown	7 (0.2)

CPA, cardiopulmonary arrest; CPC, Cerebral Performance Category; ET, emergency team; LS, life support; OOHEP, out-of-hospital emergency service; PEA, pulseless electrical activity; SAD, semiautomatic defibrillator; VF, ventricular fibrillation; VT, ventricular tachycardia.

Unless otherwise indicated, data are expressed as n (%), mean ± standard deviation, or median [interquartile range].

^{*} 600 cardiopulmonary arrests witnessed by the emergency team are excluded.

Good neurologic outcome at hospital discharge in the group of admitted patients was associated with an action interval < 8 min, initial defibrillable rhythm, witnessed CPA (particularly witnessed by the ET), and interventions prior to ET arrival, life support, and defibrillation (Table 3).

The logistic regression results for variables associated with patients arriving with a pulse at the hospital and hospital discharge with good neurologic outcome (CPC 1-2) (Tables 4 and 5, respectively) yielded the following variables of interest: defibrillable rhythm, witnessed CPA, CPA not occurring at home, and hospital treatment with PCI.

DISCUSSION

We present the results of the largest SCD series analyzed in Spain. The incidence observed in our registry, 14.6 cases per 100 000 inhabitants and year, is well below the figures reported by population registries in Spain,² particularly when focusing on the

Table 2

Univariate Analysis: Variables Associated With Patients Arriving Alive at the Hospital (n = 4072)

Variables		P
Men/women, %	31.6/34.7	.06
Age at death/age alive, y	62.8/61.4	.05
Place of arrest (home/outside home), %	26.3/40.7	.0001
Call-to-arrival time, min; median, dead/alive	13/12	.06
Call-to-arrival time ≤ 8 min, dead/alive, %	30.0/37.6	.0001
Witnessed/not witnessed, %	37.3/9.3	.0001
Initial rhythm, defibrillable/nondefibrillable, %	58.4/23.9	.0001
Defibrillation prior to ET arrival (yes/no), %	56.4/30.6	.0001
Prior life support [*] (yes/no), %	37.1/24.1	.0001
CPA witnessed by ET (yes/no), %	52.2/29.1	.0001

CPA, cardiopulmonary arrest; ET, emergency team.

Statistical significance was set at $P < .05$.

^{*} Life support prior to arrival or cardiopulmonary arrests witnessed by emergency team.

Table 3

Univariate Analysis: Variables Associated With Good Neurologic Outcome at Hospital Discharge Among Admitted Patients (n = 1245; Cerebral Performance Category 1-2, n = 417)

Variables		P
Men/women, %	37.5/23.8	.0001
Mean age, y, CPC 1-2 (no/yes)	62.2/60.4	.08
Site of arrest (home/outside home), %	26.4/39.8	.0001
Call-to-arrival interval, min; median, CPC 1-2 (no/yes)	11.5/12	.1
Call-to-arrival interval ≤ 8 min, CPC 1-2 (no/yes), %	34.9/43.4	.01
Witnessed/not witnessed	36.5/17.4	.0001
CPA witnessed by ET (yes/no), %	48.7/28.7	.0001
Initial rhythm, defibrillable/nondefibrillable, %	55.6/16.1	.0001
Defibrillation prior to ET arrival (yes/no), %	50.0/31.2	.0001
Prior life support [*] (yes/no), %	38.5/19.5	.0001
CPA in progress/pulse present on admission, %	0.7/38.3	.0001
PCI (yes/no), %	52.5/6.5	.0001

CPA, cardiopulmonary arrest; CPC, Cerebral Performance Category; ET, emergency team; PCI, percutaneous coronary intervention.

Statistical significance was set at $P < .05$.

^{*} Life support prior to arrival or cardiopulmonary arrests witnessed by emergency team.

Table 4

Multivariable Analysis: Variables Associated With Patients Arriving Alive at the Hospital (Pulse Present)

Variables	OR (95%CI)	P
Age	1.01 (1.005-1.015)	.0001
Female sex	1.368 (1.135-1.649)	.001
Call-to-arrival time ≤ 8 min	1.251 (1.051-1.488)	.01
Place of arrest other than home	1.581 (1.334-1.874)	.0001
Witnessed arrest	1.706 (1.390-2.094)	.0001
Arrest witnessed by ET	2.703 (2.149-3.399)	.0001
Initial defibrillable rhythm	3.555 (2.966-4.260)	.0001
Defibrillation prior to ET arrival	1.451 (1.019-2.066)	.04

95%CI: 95% confidence interval; ET, emergency team; OR, odds ratio. Statistical significance was set at $P < .05$.

Table 5

Multivariable Analysis: Variables Associated With Good Neurologic Outcome at Hospital Discharge (n = 1245; Cerebral Performance Category 1-2, n = 417)

Variables	OR (95%CI)	P
Witnessed arrest	1.788 (1.021-3.131)	.04
Life support prior to ET	1.689 (1.021-3.131)	.04
Arrest witnessed by ET	1.933 (1.221-3.060)	.005
Initial defibrillable rhythm	3.961 (2.703-5.805)	.0001
PCI	9.113 (5.762-14.712)	.0001

95%CI, 95% confidence interval; ET, emergency team; OR, odds ratio; PCI, percutaneous coronary intervention. Statistical significance was set at $P < .05$.

age bracket with the highest prevalence of ischemic heart disease (35–74 years). In this age bracket, the population registries report figures of 21 and 5.6 cases, which are somewhat higher than 2-fold our results (8.0 men and 2.7 women per 100 000 inhabitants and year), particularly among men.³ These figures are noteworthy but are not unusual whenever registries of resuscitated arrests are compared with population data on sudden death, as the latter include all patients, even those not receiving health care. This is also a low annual incidence when compared with data from other countries that, although varying widely, have a mean of 35 and 54 cases per 100 000 inhabitants and year in Europe and North America, respectively.^{6–8} We estimated that 8 out of every 10 CPAs included in our registry were of cardiac cause, a common finding in the main registries similar to ours. This finding is of interest, particularly after the new etiologic classification of the latest recommendations on Utstein-style CPA data collection and reporting, which combines medical causes as a whole.¹⁶ This will also make it possible to compare future outcomes and to determine whether they can be carried over to our setting.

In our study, the approximate ratio of men-to-women is 3:1, and SCD affects a rather young population for the mean life expectancy of Spain. In this series, 1 out of every 4 arrests were seen after a telephone call motivated mainly for a reason other than altered consciousness. This should be taken into consideration by the coordination center for out-of-hospital emergency services because some of these situations, such as gasping, are known to be associated with a better prognosis.¹⁷

Survival with good neurologic outcome at discharge was 10.2%. A situation of ongoing resuscitation was not advantageous for patients because final survival focused on the group of patients admitted with a spontaneous pulse (almost 30% of all patients). Although noncardiac arrest has a poorer prognosis,^{18,19} the outcomes are similar to and even better than those reported by

other large registries. In addition, global data indicate that survival is 6% in North America, 2% in Asia, 11% in Australia, and 9% in Europe.⁷ On comparing more recent data with years that coincide with the study period, we found survival rates ranging from 7.8% in Japan,²⁰ 9.0% in the United States,²¹ and 10.4% in Denmark.²²

Despite these results, some aspects are very relevant and known to influence the final prognosis, thus warranting reflection.

A fourth of all CPAs were not witnessed, which made it hard to determine the time of the event and to draw conclusions on actual time intervals. Nevertheless, these intervals were longer than desirable both when the time of collapse could be estimated and when the call-to-ET arrival time was analyzed, although they were consistent with the findings published by other out-of-hospital emergency services in Spain.^{23,24} This is important because care begun within 8 minutes was associated with the probability of hospital admission. The phase prior to ET arrival reveals a critical area for improvement. Only 1 out of every 5 patients received basic life support from witnesses. Automatic defibrillators were also rarely used, a key aspect in our series, as 25% of patients had initial defibrillable rhythms and almost 60% of them arrived at the hospital alive. Despite these figures, both actions were associated with the final prognosis and the probability of patients being admitted alive to the hospital, respectively. It is essential to develop interventions that encourage public involvement in this preliminary phase. These are probably the most important actions to improve overall patient survival.²²

More than half the arrests occurred at home, a factor negatively associated with the final prognosis. Arrest at home led to a lower prevalence of initial defibrillable rhythms and had a higher percentage of unwitnessed arrests, in which delays in ET intervention and lower rates of resuscitation by witnesses are a consistent finding in different countries with distinct out-of-hospital emergency service structures.^{25–27} Patient age and sex are also known prognostic factors,^{28,29} although in our series sex and age were associated with the probability of live hospital admission, but not with survival or neurologic outcome at discharge.

Along with initial rhythm, witnessing of the arrest by the ET was associated with survival with good neurologic outcome, a finding also reported in the literature.³⁰

The proportion of specific types of care after resuscitation (hypothermia and PCI) was discrete. Because the percentages of application were low, it was to be expected that their statistical influence was not significant, as in the case of hypothermia. However, PCI correlated closely to survival and good final neurologic outcome. Although this is somewhat known,³¹ its impact on final outcome is nevertheless surprising. Because the role of hypothermia in post-resuscitation treatments is currently controversial,³² this finding is particularly noteworthy. Although possible selection biases of patients who received PCI cannot be excluded, it is an affordable strategy for facilities with primary angioplasty programs. The identification of ST-segment elevation acute myocardial infarction as the cause of the arrest and patient referral to a specific facility if the condition is identified should be part of the care provided by the ET after resuscitation. This debate on the regionalization of health care when attending CPAs is already underway.³³

Limitations

This registry is based on an automatic system for case inclusion. Although it includes mechanisms used for quality assurance, undetected errors in patient coding cannot be ruled out, which would mean that a few patients may not have been included.

The incidence of CPA was calculated based on the number of cases seen by EPES ETs. Although in our case, airborne ETs

guarantee the possibility of care throughout the entire community of Andalusia (nearly 9 million inhabitants), land-based ETs cover actual basic health care for CPA. Apart from the debate on health care resources and reality,^{34,35} we decided to estimate only the population in the catchment area. In terms of etiology, the cardiac cause of out-of-hospital CPA is an estimate. Sudden cardiac arrest is known to be associated with several heart diseases,³⁶ and autopsy reveals that it includes some deaths not strictly considered to be cardiac.^{3,6,9} However, this is a bias present in all out-of-hospital CPA registries.

The registry included patients prospectively in chronological order but was analyzed retrospectively. Consequently, there are certain variables with a loss of information that would contribute to slight differences in the outcomes. In particular, the loss of information about the time of arrest limits any analysis of the influence of collapse-to-start of resuscitation time.

CONCLUSIONS

Sudden cardiac death usually occurs at home and affects a relatively young population. Although the rates of survival with good neurologic outcome are comparable to those of similar countries, there are major areas for improvement, particularly in the stage prior to ET arrival. Coronary interventional procedures had a considerable impact on patient recovery.

FUNDING

The registry is funded by a research grant from the *Instituto Carlos III*, with cofunding from the FEDER (*Fondo Europeo de Desarrollo Regional*) funds and the *Fundación Progreso y Salud* (public research agency of the *Consejería de Salud* of the *Junta de Andalucía*).

CONFLICTS OF INTEREST

None declared.

REFERENCES

- Defunciones según la causa de muerte. Año 2013 [cited 2014 May 6]. Available at: <http://www.ine.es/prensa/np896.pdf>
- Marrugat J, Elosua R, Gil M. Muerte súbita (I). Epidemiología de la muerte súbita cardíaca en España. *Rev Esp Cardiol*. 1999;52:717–25.
- Morentin B, Audicana C. Estudio poblacional de la muerte súbita cardiovascular extrahospitalaria: incidencia y causas de muerte en adultos de edad mediana. *Rev Esp Cardiol*. 2011;64:28–34.
- Fishman GI, Chugh SS, DiMarco JP, Albert CM, Anderson ME, Bonow RO, et al. Sudden cardiac death prediction and prevention: report from a National Heart, Lung, and Blood Institute and Heart Rhythm Society Workshop. *Circulation*. 2010;122:2335–48.
- Chugh SS, Jui J, Gunson K, Stecker EC, John BT, Thompson B, et al. Current burden of sudden cardiac death: multiple source surveillance versus retrospective death certificate-based review in a large U.S. community. *J Am Coll Cardiol*. 2004;44:1268–75.
- Nichol G, Thomas E, Callaway CW, Hedges J, Powell JL, Aufderheide TP, et al. Regional variation in out-of-hospital cardiac arrest incidence and outcome. *JAMA*. 2008;300:1423–31.
- Berdowski J, Berg RA, Tijssen J, Koster RW. Global incidences of out-of-hospital cardiac arrest and survival rates: systematic review of 67 prospective studies. *Resuscitation*. 2010;81:1479–87.
- Atwood C, Eisenberg MS, Herlitz J, Rea TD. Incidence of EMS-treated out-of-hospital cardiac arrest in Europe. *Resuscitation*. 2005;67:75–80.
- Subirana MT, Juan-Babot JO, Puig T, Lucena J, Rico A, Salguero M, et al. Specific characteristics of sudden death in a Mediterranean Spanish population. *Am J Cardiol*. 2011;107:622–7.
- Hong MH, Fonarow GC, Peterson E, Curtis AB, Hernandez A, Sanders GA, et al. Systematic review of the incidence of sudden cardiac death in the United States. *J Am Coll Cardiol*. 2011;57:794–801.

- Jacobs I, Nadkarni V, Bahr J, Berg RA, Billi JE, Bossaer L, et al. Cardiac arrest and cardiopulmonary resuscitation outcome reports: update and simplification of the Utstein templates for resuscitation registries. A statement for healthcare professionals from a task force of the international liaison committee on resuscitation (American Heart Association, European Resuscitation Council, Australian Resuscitation Council, New Zealand Resuscitation Council, Heart and Stroke Foundation of Canada, InterAmerican Heart Foundation, Resuscitation Council of Southern Africa). *Resuscitation*. 2004;63:233–49.
- Ballesteros Peña S. Supervivencia extrahospitalaria tras una parada cardiorrespiratoria en España: una revisión de la literatura. *Emergencias*. 2013;25:137–42.
- Rosell Ortiz F, Mellado Vegel F, Fernández Valle P, González Lobato I, Martínez Lara M, Ruiz Montero MM, et al. Descripción y resultados iniciales del Registro Andaluz de Parada Cardíaca Extrahospitalaria. *Emergencias*. 2013;25:345–52.
- Ballesteros-Peña S, Abecia-Inchaurregui LC, Echevarría-Orella E. Factores asociados a la mortalidad extrahospitalaria de las paradas cardiorrespiratorias atendidas por unidades de soporte vital básico en el País Vasco. *Rev Esp Cardiol*. 2013;66:269–74.
- Jennett B, Bond M. Assessment of outcome after severe brain damage. *Lancet*. 1975;1:480–4.
- Perkins GD, Jacobs IG, Nadkarni VM, Berg RA, Bhanji F, Biarent D, et al.; Utstein Collaborators. Cardiac arrest and cardiopulmonary resuscitation outcome reports: update of the Utstein Resuscitation Registry Templates for Out-of-Hospital Cardiac Arrest: a statement for healthcare professionals from a task force of the International Liaison Committee on Resuscitation (American Heart Association, European Resuscitation Council, Australian and New Zealand Council on Resuscitation, Heart and Stroke Foundation of Canada, InterAmerican Heart Foundation, Resuscitation Council of Southern Africa, Resuscitation Council of Asia); and the American Heart Association Emergency Cardiovascular Care Committee and the Council on Cardiopulmonary, Critical Care, Perioperative and Resuscitation. *Circulation*. 2015;132:1286–300.
- Bobrow BJ, Zuercher M, Ewy GA, Clark L, Chikani V, Donahue D, et al. Gasping during cardiac arrest in humans is frequent and associated with improved survival. *Circulation*. 2008;118:2550–4.
- Engdahl J, Bång A, Karlson BW, Lindqvist J, Herlitz J. Characteristics and outcome among patients suffering from out of hospital cardiac arrest of non-cardiac aetiology. *Resuscitation*. 2003;57:33–41.
- Kitamura T, Kiyohara K, Sakai T, Iwami T, Nishiyama C, Kajino K, et al. Epidemiology and outcome of adult out-of-hospital cardiac arrest of non-cardiac origin in Osaka: a population-based study. *BMJ Open*. 2014;4:e006462.
- Nakahara S, Tomio J, Ichikawa M, Nakamura F, Nishida M, Takahashi H, et al. Association of bystander interventions with neurologically intact survival among patients with bystander-witnessed out-of-hospital cardiac arrest in Japan. *JAMA*. 2015;314:247–54.
- Malta Hansen C, Kragholm K, Pearson DA, Tyson C, Monk L, Myers B, et al. Association of bystander and first-responder intervention with survival after out-of-hospital cardiac arrest in North Carolina, 2010–2013. *JAMA*. 2015;314:255–64.
- Wissenberg M, Lippert FK, Folke F, Weeke P, Hansen CM, Christensen EF, et al. Association of national initiatives to improve cardiac arrest management with rates of bystander intervention and patient survival after out-of-hospital cardiac arrest. *JAMA*. 2013;310:1377–84.
- López-Messa JB, Alonso-Fernández JL, Andrés-de Llano JM, Garmendia-Leiza JR, Ardura-Fernández J, De Castro-Rodríguez F, et al. Características generales de la parada cardíaca extrahospitalaria registrada por un servicio de emergencias médicas. *Emergencias*. 2012;24:28–34.
- Socias Crespi L, Cenicerós Rozalén MI, Rubio Roca P, Martínez Cuellar N, García Sánchez A, Ripoll Vera T, et al. Características epidemiológicas de las paradas cardiorrespiratorias extrahospitalarias registradas por el sistema de emergencias 061 (SAMU) de la Comunidad Autónoma de las Islas Baleares (2009–2012). *Med Intensiva*. 2015;39:199–206.
- Holmgren C, Bergfeldt L, Edvardsson N, Karlsson T, Lindqvist J, Silfverstolpe J, et al. Analysis of initial rhythm, witnessed status and delay to treatment among survivors of out-of-hospital cardiac arrest in Sweden. *Heart*. 2010;96:1826–30.
- Iwami T, Hiraide A, Nakanishi N, Hayashi Y, Nishiuchi T, Uejima T, et al. Outcome and characteristics of out-of hospital cardiac arrest according to location of arrest: a report from a large-scale, populationbased study in Osaka, Japan. *Resuscitation*. 2006;69:221–8.
- Ballesteros Peña S. Diferencias epidemiológicas entre las paradas cardiorrespiratorias asistidas en el domicilio y en la vía pública en el País Vasco. *Emergencias*. 2014;26:125–8.
- Akahane M, Ogawa T, Koike S, Tanabe S, Horiguchi H, Mizoguchi T, et al. The effects of sex on out-of-hospital cardiac arrest outcomes. *Am J Med*. 2011;124:325–33.
- Iwami T, Hiraide A, Nakanishi N, Hayashi Y, Nishiuchi T, Yukioka H, et al. Age and sex analyses of out-of-hospital cardiac arrest in Osaka, Japan. *Resuscitation*. 2003;57:145–52.
- Hostler D, Thomas EG, Emerson SS, Christenson J, Stiell IG, Rittenberger JC, et al. Increased survival after EMS witnessed cardiac arrest. Observations from the Resuscitation Outcomes Consortium (ROC) Epistry-Cardiac arrest. *Resuscitation*. 2010;81:826–30.
- Camuglia AC, Randhawa VK, Lavi S, Walters DL. Cardiac catheterization is associated with superior outcomes for survivors of out of hospital cardiac arrest: review and meta-analysis. *Resuscitation*. 2014;85:1533–40.

32. López-de-Sa E. ¿Qué hacer con los supervivientes a una parada cardiaca? ¿Inducir hipotermia o basta evitar la hipertermia? Rev Esp Cardiol. 2015; 68:369–72.
33. Spaite DW, Bobrow BJ, Stolz U, Berg RA, Sanders AB, Kern KB, et al. Statewide regionalization of postarrest care for out-of-hospital cardiac arrest: association with survival and neurologic outcome. Ann Emerg Med. 2014;64: 496–506.
34. Martín Reyes D, Arcos González P, Castro Delgado R. Los recursos médicos y de enfermería de los sistemas de emergencias médicas y centros de coordinación de urgencias en España. Emergencias. 2014;26:7–12.
35. Olavarría Govantes L, García del Águila JJ, Álvarez Rueda JM. Recursos y actividad de los sistemas de emergencias médicas españoles: la situación en Andalucía. Emergencias. 2014;26:237–8.
36. Bayés de Luna A, Elosua R. Muerte súbita. Rev Esp Cardiol. 2012;65:1039–52.