

Figure. Kaplan-Meier survival curves according to body mass index.

0.57-1.54; $P = .805$; obesity, HR = 0.837; 95%CI, 0.49-1.42; $P = .507$). Similarly, there were no differences in the number of admissions for cardiovascular causes (obesity, HR = 0.986; 95%CI, 0.547-1.468; $P = .663$; overweight, HR = 0.981; 95%CI, 0.611-1.575; $P = .936$).

The conclusion drawn from this study, based on BMI analysis, is that obesity and overweight show no prognostic differences compared with normal weight for cardiovascular mortality, cardiovascular hospitalization, and appropriate and inappropriate therapies in this population of patients with HF and an ICD implant for primary prevention of SD.

However, the interpretation of these study results should take into account the limitations of the study. First, the conclusions are drawn from BMI analysis, which does not differentiate body fat from lean body mass. Second, we did not analyze distribution of body weight (peripheral vs abdominal) or other measurements of adiposity such as body fat percentage. In addition, no information was available on the proinflammatory and nutritional status of the study population. Furthermore, the available information on BMI was taken from the time of implantation only; therefore, possible changes in this parameter at follow-up were not considered. Lastly, the retrospective design of the study increased the risk of bias.

María Cristina González-Cambeiro,^{a,*} Moisés Rodríguez-Mañero,^b Alba Abellas-Sequeiros,^c José Moreno-Arribas,^d David Filgueira-Rama,^e and José Ramón González-Juanatey^b

^aServicio de Cardiología, Complejo Hospitalario de Pontevedra, Pontevedra, Spain

^bServicio de Electrofisiología, Hospital Clínico Universitario de Santiago de Compostela, Santiago de Compostela, A Coruña, Spain

^cServicio de Cardiología, Hospital Clínico Universitario de Santiago de Compostela, Santiago de Compostela, A Coruña, Spain

^dServicio de Electrofisiología, Hospital Universitario de San Juan, San Juan de Alicante, Alicante, Spain

^eServicio de Electrofisiología, Hospital Clínico San Carlos, Madrid, Spain

*Corresponding author:

E-mail address: cambe_cris@hotmail.com

(M.C. González-Cambeiro).

Available online 29 July 2016

REFERENCES

1. Tracy CM, Epstein AE, Darbar D, DiMarco JP, Dunbar SB, Estes NA, et al. 2012 ACCF/AHA/HRS focused update of the 2008 Guidelines for Device-Based Therapy of Cardiac Rhythm Abnormalities. A Report of the American College of Cardiology Foundation/American Heart Association Task Force on Practice Guidelines. *J Am Coll Cardiol.* 2012;60:1297-313.
2. McMurray JJ, Adamopoulos S, Anker SD, Auricchio A, Bohm M, Dickstein K, et al.; ESC Committee for Practice Guidelines. ESC Guidelines for the diagnosis and treatment of acute and chronic heart failure 2012: the task force for the diagnosis and treatment of acute and chronic heart failure 2012 of the European Society of Cardiology. Developed in collaboration with the Heart Failure Association (HFA) of the ESC. *Eur Heart J.* 2012; 14:803-69.
3. Millán Longo C, García Montero M, Tebar Márquez D, Beltrán Romero L, Banegas JR, García Puig J. Obesidad y episodios vasculares en la diabetes mellitus tipo 2. *Rev Esp Cardiol.* 2015;68:151-3.
4. Puig T, Ferrero-Gregori A, Roig E, Vázquez R, González-Juanatey JR, Pascual-Figal D, et al. Valor pronóstico del índice de masa corporal y el perímetro de cintura en los pacientes con insuficiencia cardíaca crónica (Registro Español REDINSCOR). *Rev Esp Cardiol.* 2014;67:101-6.
5. Oreopoulos A, Padwal R, Kalantar-Zadeh K, Fonarow GC, Norris CM, McAlister FA. Body mass index and mortality in heart failure: a meta-analysis. *Am Heart J.* 2008;156:13-22.
6. Choy B, Hansen E, Moss AJ, McNitt S, Zareba W, Goldenberg I; Multicenter Automatic Defibrillator Implantation Trial-III Investigators; Multicenter Automatic Defibrillator Implantation Trial-II Investigators. Relation of body mass index to sudden cardiac death and the benefit of implantable cardioverter-defibrillator in patients with left ventricular dysfunction after healing of myocardial infarction. *Am J Cardiol.* 2010;105: 581-6.

<http://dx.doi.org/10.1016/j.rec.2016.04.055>

Catheter Ablation of Premature Ventricular Contractions From the Left Ventricular Summit



Ablación con catéter de extrasístoles ventriculares del summit ventricular izquierdo

To the Editor,

Approximately 12% of idiopathic left ventricular (LV) arrhythmias (VA) originate from the LV summit: a triangular region of the epicardial LV outflow tract with the apex at the bifurcation between the left anterior descending and left circumflex coronary arteries with its base formed by an arc connecting the first septal perforator branch of the left anterior descending coronary artery

with the left circumflex coronary artery. It is transected laterally by the great cardiac vein (GCV) at its junction with the anterior interventricular vein (AIV) into an area accessible to ablation inferiorly and an inaccessible area superiorly. Electrocardiographically, right bundle branch block morphology with inferior rightward axis is typically observed. During recent years, ablation of LV summit VA has received increasing attention in the literature, given its significant frequency and the challenging technical aspects of catheter ablation.¹⁻⁴

We report the case of a 59-year-old man with a history of ischemic heart disease and normal LV function who presented with palpitations and high density (30%) premature ventricular contractions (PVC) on 24-hour Holter recording. Beta-blockers and amiodarone were ineffective and he was scheduled for an

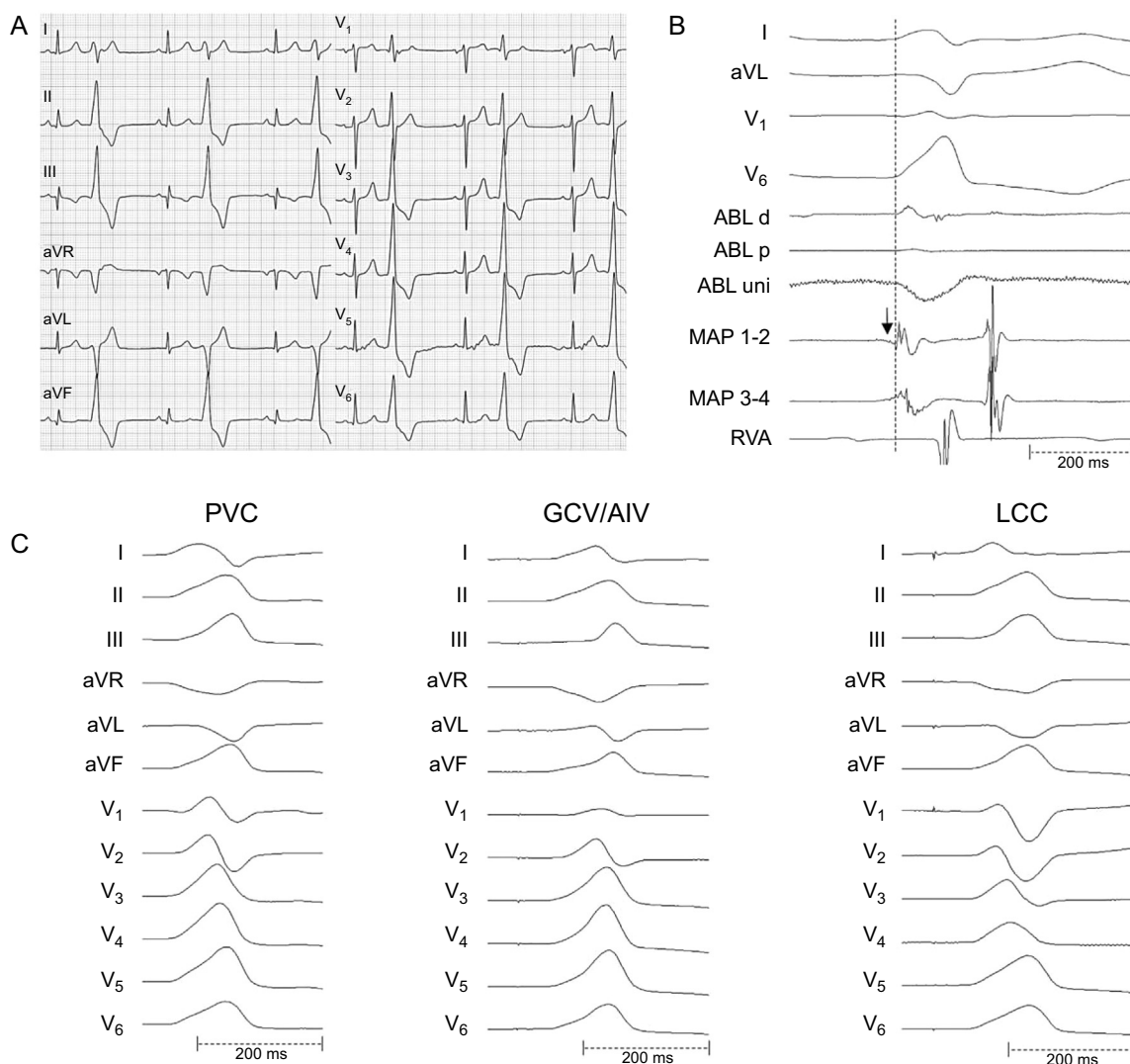


Figure 1. A: Twelve-lead electrocardiogram showing PVC; B: Intracardiac electrograms displaying an early fragmented (arrow) signal 15 ms pre-QRS on the distal bipole of the MAP catheter located at the GCV/AIV junction. A far-field rounded signal 0 ms pre-QRS was recorded on the distal bipole of the ABL catheter positioned at the left coronary cusp; C: Spontaneous PVC and pace-maps at the GCV/AIV junction and LCC with 97% and 92% concordance, respectively. ABL, ablation; AIV, anterior interventricular vein; GCV, great cardiac vein; LCC, left coronary cusp; MAP, mapping; PVC, premature ventricular contractions; RVA, right ventricular apex.

electrophysiologic study that was performed free from antiarrhythmic drugs in a conscious state. The PVC exhibited a QRS complex with a maximum duration of 147 ms, right bundle branch block morphology, QRS morphology in V₁ and inferior axis of +90° (Figure 1A), suggesting a possible LV summit/outflow origin.¹ Mapping and ablation were carried out using a 3.5 mm tip irrigated catheter (ThermoCool SF; Biosense Webster) facilitated by an electroanatomic mapping system (CARTO 3). The ablation catheter was first placed in the septal region of the right ventricular outflow tract where poor activation and pace maps were observed. The same catheter was then inserted in the coronary sinus but could only be advanced to the lateral mitral annulus region and consequently it was replaced by a 5 F multipolar catheter, which was successfully advanced out to the GCV/AIV junction. Activation mapping at this site showed a local ventricular signal of 15 ms pre-QRS with a near perfect pace mapping (97% concordance). Adjacent structures, such as the aortic-mitral continuity and the left coronary cusp (LCC) and right coronary cusp, were subsequently assessed with the LCC showing the second best activation (0 ms pre-QRS) and pace map (91% concordance) (Figure 1B and

Figure 1C). Next, a safe distance (> 10 mm) between the ablation catheter in the LCC and the left main coronary artery was confirmed by coronary angiography (Figure 2A). Ablation was then carried out in the LCC with power initially set to 30 W and maximum temperature to 45 °C, aiming for a minimum impedance drop of 10 Ω (Figure 2B). Power was eventually titrated up to 50 W, which promptly terminated the PVC. During follow-up, the patient showed no further PVC.

Given that the LV summit is situated proximal to several structures (LCC, right coronary cusp, the septal right ventricular outflow tract, aortic-mitral continuity, GCV/AIV junction), successful catheter ablation can be achieved from any of these structures (Figure 2C).^{1-3,5} Yamada et al.¹ reported successful ablation of LV summit VA within the GCV/AIV in 14 of 25 patients with earlier local ventricular activation in the GCV/AIV than in any other endocardial site. However, and as in our patient, ablation through the coronary venous system may not be possible due to difficulty in advancing the ablation catheter to the site of interest, the proximity of coronary arteries or the inability to achieve adequate power. Jauregui Abularach

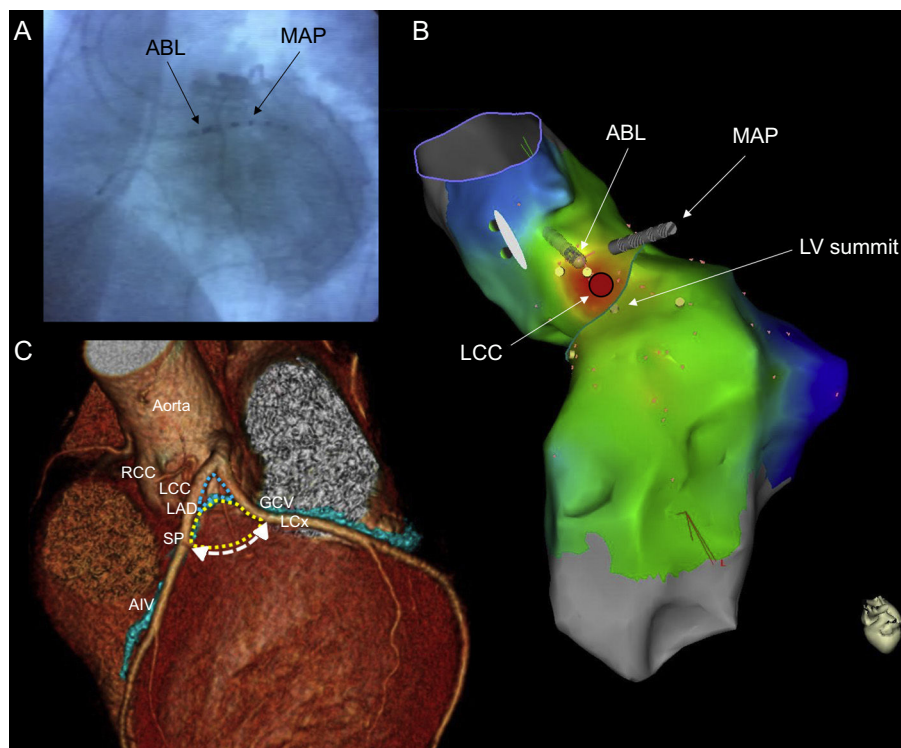


Figure 2. A: Left anterior oblique fluoroscopy view of the ABL catheter positioned at the LCC and the MAP catheter advanced out to the GCV/AIV junction. Coronary angiography revealed a safe distance between the ablation catheter and the major coronary vessels; B: Superior left lateral view of the CARTO 3 activation map showing the LV summit and the LCC where ablation was delivered (red disc); C: Computed tomographic image of the LV summit (reproduced with permission from Lin et al.⁵). ABL, ablation; AIV, anterior interventricular vein; GCV, great cardiac vein; LAD, left anterior descending coronary artery; LCC, left coronary cusp; LCx, left circumflex coronary artery; LV, left ventricular; MAP, mapping; RCC, right coronary cusp; SP, septal perforator.

et al.² reported successful ablation from the LCC in 9 of 16 patients who had VA that were mapped marginally closer to GCV/AIV, describing an aVL/aVR Q-wave ratio < 1.45 to be predictive of successful ablation from the LCC (aVL/aVR Q-wave ratio was 1.33 in our patient). Finally, when ablation from the endocardium or the coronary venous system fails, a percutaneous epicardial approach may be considered. In a study of 23 such patients, epicardial ablation was attempted in 14 patients, being successful in only 5 of them, and in the remaining 9 patients, the VA origin was in the inaccessible area in close proximity to the major coronary vessels.³

In summary, we present a patient with PVC from the LV summit with best activation and pace maps at the GCV/AIV junction. However, due to anatomical restrictions, ablation was carried out successfully from the LCC.

CONFLICTS OF INTEREST

M.A. Arias is an Associate Editor of *Revista Española de Cardiología*.

Finn Akerström,* Marta Pachón, Alberto Puchol, Irene Narváez, Luis Rodríguez-Padial, and Miguel A. Arias

Unidad de Arritmias y Electrofisiología Cardíaca, Servicio de Cardiología, Hospital Virgen de la Salud, Toledo, Spain

*Corresponding author:

E-mail address: finnakerstrom@gmail.com (F. Akerström).

REFERENCES

1. Yamada T, McElderry HT, Doppalapudi H, Okada T, Murakami Y, Yoshida Y, et al. Idiopathic ventricular arrhythmias originating from the left ventricular summit: anatomic concepts relevant to ablation. *Circ Arrhythm Electrophysiol.* 2010;3:616–23.
2. Jauregui Abularach ME, Campos B, Park KM, Tschabrunn CM, Frankel DS, Park RE, et al. Ablation of ventricular arrhythmias arising near the epicardial veins from the left sinus of Valsalva region: ECG features, anatomic distance, and outcome. *Heart Rhythm.* 2012;9:865–73.
3. Santangeli P, Marchlinski FE, Zado ES, Benhayon D, Hutchinson MD, Lin D, et al. Percutaneous epicardial ablation of ventricular arrhythmias arising from the left ventricular summit. Outcomes and electrocardiogram correlates of success. *Circ Arrhythm Electrophysiol.* 2015;8:337–43.
4. Gil-Ortega I, Pedrote-Martínez A, Fontenla-Cerezuela A. Spanish Catheter Ablation Registry. 14th Official Report of the Spanish Society of Cardiology Working Group on Electrophysiology and Arrhythmias (2014). *Rev Esp Cardiol.* 2015;68:1127–37.
5. Lin CY, Chung FP, Lin YJ, Chong E, Chang SL, Lo LW, et al. Radiofrequency catheter ablation of ventricular arrhythmias originating from the continuum between the aortic sinus of Valsalva and the left ventricular summit: Electrocardiographic characteristics and correlative anatomy. *Heart Rhythm.* 2016;13:111–21.

<http://dx.doi.org/10.1016/j.rec.2016.04.057>