

Table

Predictors of Arrhythmic Recurrence After Cryoballoon Ablation of Atrial Fibrillation

Variable	HR (95% CI)	P
Paroxysmal AF	0.899 (0.299-2.700)	.851
LA diameter	1.071 (0.959-1.197)	.221
LVEF	0.943 (0.863-1.031)	.199
Age	1.012 (0.963-1.064)	.641
AF duration	1.168 (1.035-1.318)	.012
Structural heart disease	0.859 (0.199-3.710)	.838
Ablation of atrial flutter combined with CBA	0.892 (0.322-2.476)	.825
CHA ₂ DS ₂ -VASc < 2	0.996 (0.332-2.989)	.994
Male sex	0.819 (0.273-2.458)	.819
Use of Artic Front Advance device [®]	0.454 (0.101-2.032)	.301
Number of applications	1.064 (0.824-1.372)	.633
Number of PVs isolated	0.192 (0.072-0.509)	.001
Anatomic variants of PV	1.545 (0.512-4.661)	.440

AF, atrial fibrillation; CBA, cryoballoon ablation; CI, confidence interval; HR, hazard ratio; LA, left atrial; LV, left ventricle; PV, pulmonary veins.

Statistical significance was set at $P < .05$.

new cryoballoon) to the left inferior pulmonary vein. The patient died 1 month after the procedure.

The learning curve for CBA as the treatment of choice for recurrent paroxysmal AF or short-lasting persistent AF in small-volume centers is steep, as indicated by the high initial short-term efficacy and fast decrease in fluoroscopy and procedure times ($P < .001$) in our series. The rates of sustained sinus rhythm with and without antiarrhythmic drugs and the incidence of phrenic paralysis and severe complications (3 out of 63 cases [4.8%]) appear to be similar to those of other series with a larger number of patients.³⁻⁵ Although the incidence of complications may seem high, it was driven mainly by transient phrenic paralysis. This complication was eliminated when we limited the application

time and minimum temperature reached ($P = .01$). Importantly, however, changes in the ablation parameters and the small number of patients in the series prevent affirmations about the steepness of the learning curve, particularly regarding the incidence of serious complications.

Julio Martí-Almor, Victor Bazan,* Ermengol Vallès, Begoña Benito, Miguel Eduardo Jauregui-Abularach, and Jordi Bruguera-Cortada

Unidad de Arritmias, Servicio de Cardiología, Hospital del Mar, Universidad Autónoma de Barcelona, Barcelona, Spain

*Corresponding author:

E-mail address: vbazan@hospitaldelmar.cat (V. Bazan).

Available online 2 June 2014

REFERENCES

- Ferrero A, Díaz-Infante E, Macías A. Registro español de ablación con catéter. XII Informe oficial de la Sección de Electrofisiología y Arritmias de la Sociedad Española de Cardiología (2012). *Rev Esp Cardiol*. 2013;66:983-92.
- Neumann T, Wojcik M, Berkowitsch A, Erkapic D, Zaltsberg S, Greiss H, et al. Cryoballoon ablation of paroxysmal atrial fibrillation: 5-year outcome after single procedure and predictors of success. *Europace*. 2013;15:1143-9.
- Packer DL, Kowal RC, Wheelan KR, Irwin JM, Champagne J, Guerra PG, et al. Cryoballoon ablation of pulmonary veins for paroxysmal atrial fibrillation: first results of the North American Arctic Front (STOP AF) pivotal trial. *J Am Coll Cardiol*. 2013;61:1713-23.
- Calkins H, Reynolds MR, Spector P, Sondhi M, Xu Y, Martin A, et al. Treatment of atrial fibrillation with antiarrhythmic drugs or radiofrequency ablation: Two systematic literature reviews and meta-analyses. *Circ Arrhythm Electrophysiol*. 2009;2:349-61.
- Cappato R, Calkins H, Chen SA, Davies W, Jesaka Y, Kalman J, et al. Updated worldwide survey on the methods, efficacy, and safety of catheter ablation for human atrial fibrillation. *Circ Arrhythm Electrophysiol*. 2010;3:32-8.

<http://dx.doi.org/10.1016/j.rec.2014.02.012>

Prognostic Value of the INTERHEART-cholesterol Risk Score in Patients Hospitalized for Chest Pain



Valor pronóstico de la escala INTERHEART-colesterol para pacientes que ingresan por dolor torácico

To the Editor,

Predicting the incidence of and/or mortality associated with ischemic heart disease is of crucial importance in public health and consequently a number of scoring systems have been developed to estimate the risk of this disease, such as the Framingham equation¹ or the SCORE chart.² In 2011, the investigators in the INTERHEART study described a specific scoring system to predict the incidence of acute infarction, with a variant based on both low-density and high-density lipoprotein cholesterol.³ The objective of our study was to analyze the prognostic value of the INTERHEART-cholesterol score in patients admitted to hospital for chest pain.

This score is based on a prospective observational registry of all the patients hospitalized consecutively for chest pain in a single cardiology department over a 19-month period. In all, 1312 consecutive patients were recruited, of which 1240 (94.5%) were included in the study, after exclusion of those whose analytical results were not available. The enrolled patients were classified according to a diagnosis of acute coronary syndrome (ACS) or

nonischemic chest pain. The INTERHEART-cholesterol score³ was calculated for each participant on the basis of age (> 55 years for men and > 65 years for women, 2 points), low-density lipoprotein cholesterol (77-116 mg/dL, 1 point; 177-150 mg/dL, 2 points; > 151 mg/dL, 5 points), high-density lipoprotein cholesterol (< 40 mg/dL, 2 points), tobacco use (ex-smoker, 2 points; smoker of 1-5 cigarettes/d, 2 points; smoker of 6-10 cigarettes/d, 4 points; smoker of 11-20 cigarettes/d, 7 points; smoker of > 20 cigarettes/d, 11 points), diabetes mellitus (7 points), and hypertension (6 points); the patients were divided into tertiles depending on their individual scores. After hospital discharge, the patients were followed up for at least 1 year.

The statistical analysis was carried out with SPSS 20.0 for Mac (SPSS Inc., Chicago, Illinois, United States). Categorical variables were evaluated with the chi-square test and continuous variables with Student's *t* test and analysis of variance (ANOVA). The survival analysis was performed using Cox proportional hazards regression by means of forward selection; for this analysis, we considered the lowest tertile as the reference variable and analyzed the variables not included in the INTERHEART score but having clinical implications for prognosis or those that obtained a P value $\leq .25$ in the univariate analysis. P values $< .05$ were considered to indicate statistical significance.

Of the 1240 patients studied, 467 (37.7%) had non-ST-segment elevation ACS, 189 (15.2%) had ST-segment elevation ACS, and 584 (47.1%) had nonischemic chest pain. The mean score

Table

General Characteristics of the Study Population Divided Into Tertiles According to the INTERHEART-cholesterol Risk Score

	Total	Tertile 1 (< 9.99)	Tertile 2 (10.0-14.99)	Tertile 3 (> 15)	P
Patients	1240	411 (33.1)	385 (31.0)	444 (35.8)	
Score, mean (SD)	11.74 (5.7)	5.52 (2.8)	11.23 (1.3)	17.93 (2.7)	$< .01$
Age, mean (SD), y	67.9 (13.1)	66.1 (15.0)	69.0 (13.0)	68.5 (11.0)	.02 ^a
Men, %	64.9	55.0	73.5	66.7	$< .01$
Diabetes mellitus, %	31.9	2.7	11.2	77.0	$< .01$
HT, %	67.6	31.1	78.4	91.9	$< .01$
Dyslipidemia, %	49.0	36.7	48.8	60.4	$< .01$
Smokers, %	24.5	16.3	20.8	35.1	$< .01$
History of ischemic heart disease, %	31.1	19.5	36.1	37.6	$< .01$
History of heart failure, %	3.7	2.2	4.4	4.5	.14
History of stroke, %	5.6	4.4	3.4	8.8	.01
Noncoronary chest pain, %	43.6	64.7	40.7	26.4	$< .01$
NSTEACS, %	39.7	21.2	42.5	54.2	$< .01$
STEACS, %	16.7	14.1	16.8	19.4	.14
LVEF, mean (SD), %	58.3 (10.6)	60.4 (8.5)	58.5 (10.2)	55.9 (12.4)	.01 ^b
Revascularization, %	40.5	25.5	41.8	53.7	$< .01$
Hemoglobin, mean (SD), mg/dL	13.2 (1.9)	13.5 (1.8)	13.3 (1.9)	12.9 (2.0)	$< .01$
Blood glucose, mean (SD), mg/dL	111.6 (38.5)	98.7 (19.6)	105.7 (32.1)	127.1 (48.5)	$< .01$
Creatinine, mean (SD), mg/dL	1.0 (0.4)	0.9 (0.3)	1.1 (0.4)	1.1 (0.6)	$< .01$
GFR, mean (SD), mL/min/1.72 m ²	76.8 (25.4)	81.6 (24.8)	76.2 (24.4)	73.8 (26.4)	$< .01$
Total cholesterol, mean (SD), mg/dL	165.8 (48.3)	169.3 (44.9)	164.3 (47.9)	164.7 (50.9)	.403
HDL-C, mean (SD), mg/dL	40.1 (13.4)	44.8 (15.0)	39.7 (12.9)	37.1 (11.5)	$< .01$
LDL-C, mean (SD), mg/dL	98.5 (50.2)	99.0 (33.2)	96.8 (35.3)	99.7 (69.3)	.753
Triglycerides, mg/dL	125.0 (95.0-167.0)	115.0 (90.0-149.0)	120.5 (92.0-162.0)	138.0 (106.0-185.0)	$< .01$
Statin at discharge, %	74.0	58.2	76.0	86.5	$< .01$
Acetylsalicylic acid at discharge, %	74.6	60.1	74.9	88.0	$< .01$
Clopidogrel at discharge, %	49.6	28.1	53.0	65.5	$< .01$
ACE inhibitor/ARB at discharge, %	63.5	40.6	70.6	76.8	$< .01$
Beta-blocker at discharge, %	65.3	52.1	65.8	77.1	$< .01$

ACE, angiotensin-converting enzyme; ARB, angiotensin receptor blocker; CP, chest pain; GFR, glomerular filtration rate; HDL-C, high-density lipoprotein cholesterol; HT, hypertension; LDL-C, low-density lipoprotein cholesterol; LVEF, left ventricular ejection fraction; NSTEACS, non-ST-segment elevation acute coronary syndrome; SD, standard deviation; STEACS, ST-segment elevation acute coronary syndrome.

^a Difference between tertile 1 and the other 2 tertiles.

^b Difference between tertile 3 and the other 2 tertiles.

Unless otherwise indicated, the data are expressed as No. (%) or median (standard deviation).

(standard deviation) with the INTERHEART-cholesterol scale was lower in the group with nonischemic chest pain than in the ACS group: 10.02 (5.42) vs 13.27 (5.48) ($P < .001$). When the score results were analyzed by tertiles, the higher the tertile, the higher the cardiovascular risk and incidence of a history of cardiovascular disease, and the lower the prevalence of nonischemic chest pain (Table).

A 1-year follow-up was achieved in 96% of the patients (mean, 453.7 days [152.2 days]). Going from the lowest to the highest tertile, we observed a clear pattern of increasing rates of all-cause mortality (4.8%, 10.0%, and 13.4%; $P < .01$), cardiovascular mortality (2.6%, 7.1%, and 11.1%; $P < .01$), and nonfatal infarction (6.1%, 16.8%, and 22.5%; $P < .01$). Cox regression multivariate analysis demonstrated that the lowest tertile (< 10.0) was independently associated with a better prognosis for all the complications studied (Figure); age and a history of heart failure were associated with a higher incidence of these complications.

The INTERHEART-cholesterol score was designed to provide a highly specific tool for predicting the incidence of ACS, but its

predictive power for ACS is low.³ This scoring system differs markedly from the Framingham score or the SCORE chart, which appears to make it useful in patients with chest pain. Its major advantage seems to lie in its ability to identify very low-risk patients, and our results provide evidence of its prognostic value after a hospital stay for chest pain.

The development of ACS is a multifactorial process that goes beyond the mere presence of cardiovascular risk factors.⁴ The identification of the determinants that lead to the destabilization of stable coronary lesions and cause ACS continues to be one of the great challenges in the knowledge of atherosclerosis. One of the major challenges in the knowledge of atherosclerosis continues to be the identification of the determinants that lead to the destabilization of stable coronary lesions and cause ACS. These determinants could be intrinsic characteristics of plaques⁵ or nonclassical factors.⁶

A limitation of this study is that the scoring system applied was designed for primary prevention in patients admitted to hospital for chest pain; however, this report is of interest because useful data such as those provided by the study are not available either in Spain or in Europe as a whole.

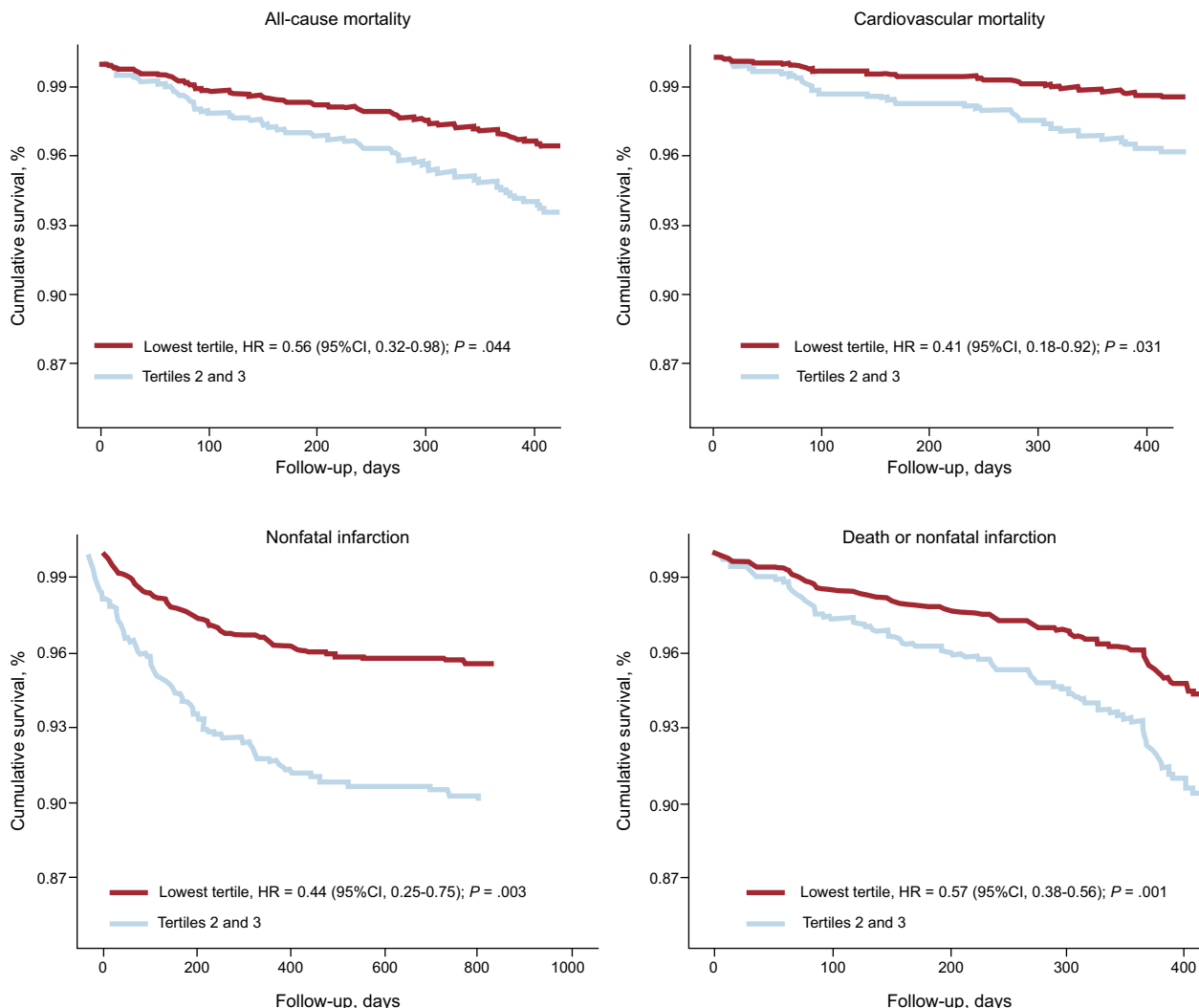


Figure. Adjusted Kaplan-Meier incidence curves of the endpoints evaluated during follow-up. CI, confidence interval; HR, hazard ratio.

In short, the INTERHEART-cholesterol score identifies patients at low risk for complications following a hospital stay for chest pain. Therefore, it could be used to identify patients who, although they may not require mandatory follow-up, could nevertheless benefit from less exhaustive monitoring.

Alberto Cordero,* Ramón López-Palop, Pilar Carrillo, Beatriz Miralles, María Dolores Masiá, and Vicente Bertomeu-Martínez

Departamento de Cardiología, Hospital Universitario de San Juan, San Juan de Alicante, Alicante, Spain

* Corresponding author:
E-mail address: acorderofort@gmail.com (A. Cordero).

Available online 29 May 2014

REFERENCES

- Marrugat J, Solanas P, D'Agostino R, Sullivan L, Ordovas J, Cordón F, et al. Estimación del riesgo coronario en España mediante la ecuación de Framingham calibrada. *Rev Esp Cardiol.* 2003;56:253-61.
- Sans S, Fitzgerald AP, Royo D, Conroy R, Graham I. Calibración de la tabla SCORE de riesgo cardiovascular para España. *Rev Esp Cardiol.* 2007;60:476-85.
- McGorrian C, Yusuf S, Islam S, Jung H, Rangarajan S, Avezum A, et al. Estimating modifiable coronary heart disease risk in multiple regions of the world: the INTERHEART Modifiable Risk Score. *Eur Heart J.* 2011;32:581-9.
- Crea F, Liuzzo G. Pathogenesis of acute coronary syndromes. *J Am Coll Cardiol.* 2013;61:1-11.
- Dégano IR, Elosua R, Kaski JC, Fernández-Bergés DJ, Grau M, Marrugat J. Estabilidad de la placa aterosclerótica y la paradoja del sur de Europa. *Rev Esp Cardiol.* 2013;66:56-62.
- Cordero A, Moreno-Arribas J, Bertomeu-González V, Agudo P, Miralles B, Masiá MD, et al. Los niveles bajos de colesterol HDL se asocian de forma independiente a enfermedad coronaria aguda en pacientes que ingresan por dolor torácico. *Rev Esp Cardiol.* 2012;65:319-25.

<http://dx.doi.org/10.1016/j.rec.2014.02.011>