

## REFERENCES

- Montalescot G, Sechtem U, Achenbach S, et al. 2013 ESC guidelines on the management of stable coronary artery disease: the Task Force on the management of stable coronary artery disease of the European Society of Cardiology. *Eur Heart J*. 2013; 34:2949-3003.
- Mateo I, Morillas P, Quiles J, et al. ¿Qué medida del grosor íntima-media carotídeo caracteriza mejor la carga aterosclerótica del paciente hipertenso: valor máximo o medio? *Rev Esp Cardiol*. 2011;64:417-420.
- Ahmadvazir S, Zacharias K, Shah BN, Pabla JS, Senior R. Role of simultaneous carotid ultrasound in patients undergoing stress echocardiography for assessment of chest pain with no previous history of coronary artery disease. *Am Heart J*. 2014; 168:229-236.
- Metz LD, Beattie M, Hom R, Redberg R, Grady D, Fleischman KE. The prognosis value of normal exercise myocardial perfusion imaging and exercise echocardiography: a meta-analysis. *J Am Coll Cardiol*. 2007;49:227-237.
- From AM, Kane G, Bruce C, Pelliikka PA, Scott C, McCully RB. Characteristics and outcomes of patients with abnormal stress echocardiograms and angiographically mild coronary artery disease (<50% stenoses) or normal coronary arteries. *J Am Soc Echocardiogr*. 2010;23:207-214.
- Peteiro J, Bouzas-Mosquera A, Brouillon J, et al. Outcome by exercise echocardiography in patients with low pretest probability of coronary artery disease. *J Am Soc Echocardiogr*. 2016;29:736-744.

<http://dx.doi.org/10.1016/j.rec.2016.12.032>

1885-5857/

© 2016 Sociedad Española de Cardiología. Published by Elsevier España, S.L.U. All rights reserved.

### Diagnostic Value of NT-proBNP for Early Identification of Chagas Cardiomyopathy in Non-endemic Areas



#### Valor diagnóstico del NT-proBNP para la detección precoz de cardiopatía chagásica en áreas no endémicas

#### To the Editor,

Chagas disease is the first cause of nonischemic heart disease in Latin America and is associated with considerable morbidity and mortality.<sup>1</sup> The prevalence of this condition has increased in Europe as a consequence of current migratory trends.<sup>2</sup> Once the heart disease is established in this condition, there is no benefit from treating the infection.<sup>3</sup> Hence, it is essential to achieve a prompt diagnosis to change the course and prognosis of the disease.

Natriuretic peptide analysis has shown diagnostic and prognostic value in several cardiomyopathies. Our aim was to achieve prompt detection of Chagas cardiomyopathy by analyzing the N-terminal pro-B-type natriuretic peptide (NT-proBNP), evaluating several echocardiographic parameters of diastolic dysfunction and systolic function, and determining the regional systolic shortening by myocardial strain measurement.

A prospective, observational study was carried out in 85 patients with positive serology for *Trypanosoma cruzi* between

January 2015 and June 2016. All patients underwent NT-proBNP determination by chemiluminescence immunoassay, electrocardiography (ECG), and transthoracic echocardiography (TTE). In patients with abnormalities, cardiac magnetic resonance (MR) imaging was additionally performed.

The statistical analysis used SPSS v.21. Correlations of NT-proBNP concentrations with the ejection fraction and diastolic dysfunction parameters (mainly the indexed atrial volume and the E/e' ratio) were analyzed using the Pearson test. The sensitivity and specificity of NT-proBNP for predicting Chagas cardiomyopathy was evaluated using a cutoff value of > 125 pg/mL, and the various echocardiographic parameters were compared after the patients were divided into 3 disease groups.

In our cohort, 95.3% were from Bolivia, 74.1% were women, and the mean age was 43 (range, 18-63) years. From the clinical viewpoint, 62.4% of the patients were asymptomatic. The most commonly reported symptom was palpitations in 25.9% of patients; only 9.5% were in New York Heart Association (NYHA) functional class  $\geq 2$ . All patients had normal renal function and none were receiving treatment for heart failure at the time of inclusion.

Patients were classified into 3 disease groups based on their characteristics: group 1 (indeterminate phase, positive serology with no abnormalities on ECG or TTE, n = 64); group 2 (2 or more of the ECG changes typically seen in Chagas disease, with normal TTE

#### Table

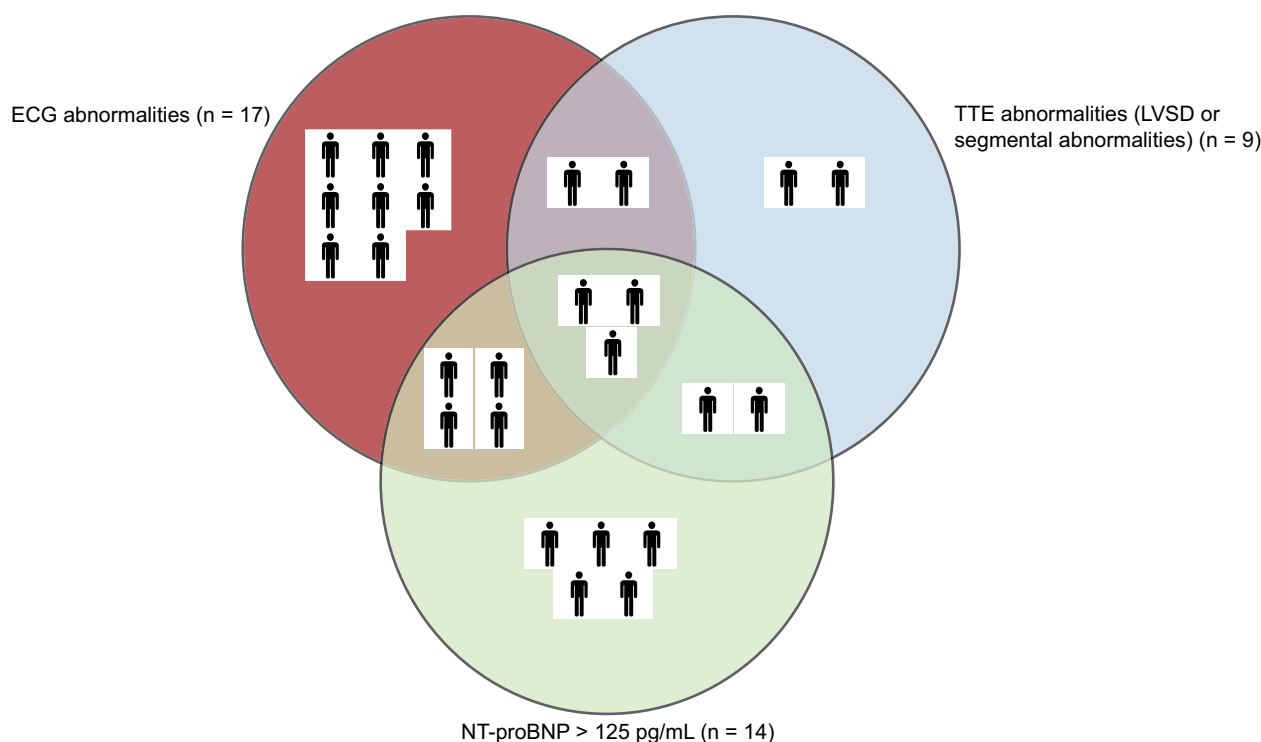
#### Main Variables by Groups

	Group 1	Group 2	Group 3	P <sup>a</sup>
Patients	64 (75.3)	12 (14.1)	9 (10.6)	
LVEF, %	67.4	66.9	49.3	< .001
Left ventricular end-diastolic volume (indexed), cm <sup>3</sup> /m <sup>2</sup>	48.9	51.2	57.0	.20
Left atrial end-diastolic volume (indexed), cm <sup>3</sup> /m <sup>2</sup>	26.3	24.5	31.3	.22
E/e' (lateral)	6.8	6.6	10.9	.02
E/e' (medial)	9.9	8.4	11.7	.14
NT-proBNP, pg/mL	42 [26.8-70.5]	84 [27.8-149.5]	126 [36.5-238.5]	< .01
NT-proBNP >125 pg/mL, %	7.8	33.3	55.6	< .001
Total longitudinal strain, % <sup>b</sup>	21.9	23.5	20.0	.047
Edema on MR STIR sequences	7 (14.3)	11 (36.4)	5 (80)	.07
Delayed enhancement on MR, %	0	18.2	60	.04

LVEF, left ventricular ejection fraction; NT-proBNP, N-terminal pro-B-type natriuretic peptide; MR, magnetic resonance; STIR, short tau inversion recovery. Values are expressed as No. (%) or median [interquartile range], unless otherwise indicated.

<sup>a</sup> Calculated by ANOVA for mean values and by the chi-square test for percentages.

<sup>b</sup> Refers to the total longitudinal strain value, calculated as the mean of systolic myocardial shortening values in the 4-, 2-, and 3-chamber views.



**Figure.** Biomarker, ECG, and echocardiography abnormalities in a population with a new diagnosis of Chagas disease. LVSD, left ventricular systolic diameter; ECG, electrocardiogram; TTE, transthoracic echocardiography; NT-proBNP, N-terminal pro-B-type natriuretic peptide.

findings,  $n = 12$ ), and group 3 (left ventricle dilatation, systolic dysfunction or segmental contractility abnormalities of the left or right ventricle on TTE;  $n = 9$ ) (Table). Patients with Chagas cardiomyopathy were those in groups 2 and 3.

NT-proBNP values showed significant correlations with left ventricular ejection fraction and end-diastolic volume ( $r = -0.48$  and  $0.54$  respectively; both,  $P < .001$ ) and with diastolic dysfunction parameters, such as left atrial volume, the medial  $E/e'$  ratio, and particularly, the lateral  $E/e'$  ratio ( $r = 0.50$ ,  $r = 0.62$ , and  $r = 0.83$ ;  $P < .001$  for the 3 parameters). The area under the ROC curve of NT-proBNP for detecting diastolic dysfunction (using the  $E/e'$  ratio) was 0.92. However, 73.7% of patients with Chagas cardiomyopathy had a normal diastolic filling pattern.

NT-proBNP values in our sample showed no relationship with the values obtained in the analysis of myocardial deformation. There were no significant differences in myocardial strain values between patients with heart disease (groups 2 and 3) and those without (group 1).

NT-proBNP level was  $> 125$  pg/mL in 9 of the 21 patients with Chagas cardiomyopathy (including abnormal TEE or ECG findings) (sensitivity, 42.9%). In group 1 (indeterminate phase), 7.8% of the patients had values above the reference range (specificity, 92.2%). The positive and negative predictive values of NT-proBNP alone for detecting Chagas cardiomyopathy were 64.3% and 83.1%, respectively. In some studies, the cutoff for women older than 55 years is  $> 150$  pg/mL; at this level there would be an even greater decrease in sensitivity. The overlapping of the various diagnostic tests is depicted in Figure.

In endemic regions with limited resources, screening is still based on ECG and chest radiography findings. If this approach had been used in our cohort, 44.4% (4 of 9) of patients who had normal

results on these tests, but had abnormal findings on TEE, would not have been diagnosed. By including NT-proBNP results, the diagnostic sensitivity would have improved. Only 22.2% (2 of 9) of patients would have been missed (50% relative reduction in false-negatives, although the number is small in absolute terms).

In patients in groups 2 and 3 who underwent cardiac MR imaging ( $n = 16$ ), the most common findings were edema on short tau inversion recovery (STIR) sequences (50%), late enhancement (31.3%), and aneurysms (12.5%).

There was no association between myocardial strain and edema on MR imaging, which casts doubts on the diagnostic value of strain in the diagnosis of early phases of the disease.<sup>4</sup>

The practical conclusion of this study is that NT-proBNP is not sufficiently sensitive or specific to enable prompt detection of cardiac disease in low-risk patients in nonendemic areas. We believe that combined evaluation with ECG and TEE is required to achieve a greater diagnostic yield in the early phases of the disease.

Pablo Merás,<sup>a</sup> Juan Caro,<sup>a</sup> Elena Trigo,<sup>b</sup> Javier Irazusta,<sup>a</sup> José Luis López-Sendón,<sup>a</sup> and Elena Refoyo<sup>a,\*</sup>

<sup>a</sup>Servicio de Cardiología, Hospital Universitario La Paz, Madrid, Spain

<sup>b</sup>Unidad de Enfermedades Tropicales, Servicio de Medicina Interna, Hospital Carlos III-La Paz, Madrid, Spain

\* Corresponding author:

E-mail address: [erefoyo@gmail.com](mailto:erefoyo@gmail.com) (E. Refoyo).

Available online 24 February 2017

REFERENCES

1. Jannin J, Villa L. An overview of Chagas disease treatment. *Mem Inst Oswaldo Cruz.* 2007;102(Suppl 1):95-97.
2. Schmunis GA. Epidemiology of Chagas disease in non-endemic countries: the role of international migration. *Mem Inst Oswaldo Cruz.* 2007;102(Suppl 1):75-85.
3. Morillo CA, Marin-Neto JA, Avezum A, et al. Randomized trial of benznidazole for chronic Chagas' cardiomyopathy. *N Engl J Med.* 2015;373:1295-1306.

4. Garcia-Alvarez A, Sitges M, Pinazo MJ, et al. Chagas cardiomyopathy: the potential of diastolic dysfunction and brain natriuretic peptide in the early identification of cardiac damage. *PLoS Negl Trop Dis.* 2010;4:e826.

<http://dx.doi.org/10.1016/j.rec.2016.12.010>  
1885-5857/

© 2016 Sociedad Española de Cardiología. Published by Elsevier España, S.L.U. All rights reserved.

**Prognostic Implications of Functional Mitral Regurgitation in Patients With Heart Failure and Reduced Ejection Fraction**



**Impacto de la insuficiencia mitral funcional en el pronóstico de pacientes con insuficiencia cardíaca y fracción de eyección reducida**

**To the Editor,**

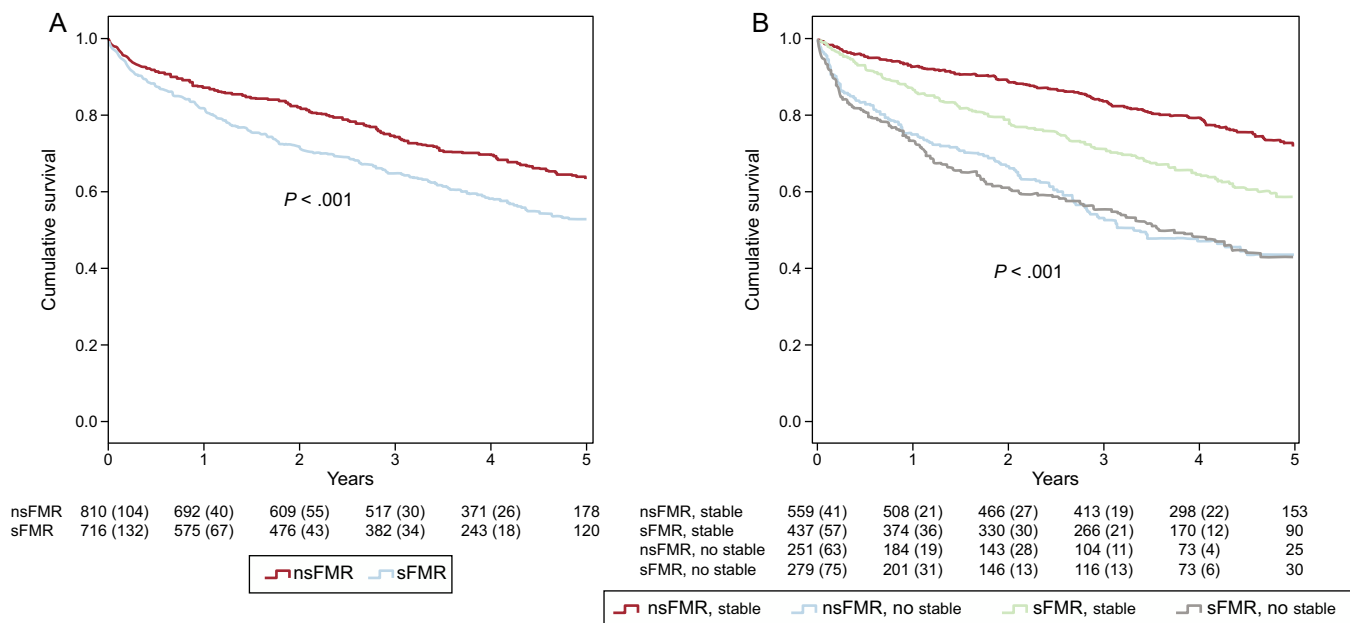
Functional mitral regurgitation (FMR) occurs in 20% to 30% of patients with heart failure (HF) and reduced left ventricular ejection fraction (LVEF).<sup>1,2</sup> In these patients, FMR increases left ventricular (LV) end-diastolic pressure, contributes to LV remodeling, increases pulmonary hypertension, and worsens right ventricular function, all of which are associated with poor prognosis in HF. The clinical course of FMR depends on the type of heart disease, although the factors that determine its onset and the treatment of choice remain unknown. Treatment options include cardiac resynchronization and transplantation, but in most patients with this condition, it is not cured.<sup>3</sup> Percutaneous mitral valve repair has comparable outcomes to surgery for organic mitral regurgitation with reasonable LVEF.<sup>4</sup> Observational studies indicate that percutaneous treatment is beneficial in FMR with

reduced LVEF. While randomized study results (ClinicalTrials.govNCT01772108) are awaited, it would be interesting to identify the patient profile that could benefit from this treatment.

We present the data on FMR from the Spanish HF Research Network (REDINSCOR). From 2007 to 2011, 2507 patients with symptomatic HF were recruited in 18 hospitals.<sup>5</sup> We selected patients with LVEF < 40% with no organic valve disease or hypertrophic cardiomyopathy. Patients were then divided according to whether they had significant FMR (sFMR) (grade II-IV) or nonsignificant FMR (nsFMR) (grade 0-I). The analyses were performed using SPSS 22 and STATA-13.<sup>6</sup>

The study included 1526 patients: most were male (78%) with a history of hypertension (65%) and overweight (body mass index, 28.4). Fifty-seven percent were in functional class III or IV with elevated natriuretic peptide levels despite optimal HF therapy (86% were receiving beta-blockers, 87% were receiving angiotensin-converting enzyme inhibitors or angiotensin II receptor antagonists, and 64% were receiving aldosterone antagonists). The etiology of ventricular dysfunction was mostly ischemic (57%). At the time of study inclusion, 530 patients (35%) had signs of decompensated HF.

Significant FMR was detected in 746 patients (47%). The group with sFMR had a higher frequency of left bundle branch block, left



**Figure.** Kaplan-Meier curves. A: prognosis was worse in patients with sFMR ( $P < .001$ ). B: patients with signs of decompensation (unstable) had lower survival independently of FMR severity. In stable patients, the presence of sFMR identified a group with intermediate prognosis ( $P < .001$ ). FMR, functional mitral regurgitation; nsFMR, nonsignificant functional mitral regurgitation; sFMR, significant functional mitral regurgitation.