

tion was comparable to that in Spain and, as expected, it had a relatively lower frequency of the oldest subpopulation since we excluded additional cardiovascular disease or risk factors.^{4,5} Additional exclusion of patients with renal disease did not change the main results substantially. Although some differences in parameters between normal and reference populations were statistically significant, they were generally small and not necessarily clinically relevant. Last, our limited sample size, especially the normal population, hampered wider stratification by age but nevertheless allowed for precision of estimates generally < 5%.

This report represents one step toward the clinical application of PWV and CASP, providing guidelines for assessing older patients' vascular status besides brachial systolic BP. However, further studies should obtain evidence for effective intervention on these parameters.

FUNDING

This work was supported by *Fondo de Investigación Sanitaria* (FIS) grants no. PI13/02321 and 16/01460 (*Instituto de Salud Carlos III* and FEDER/FSE) and CIBERESP. The funding agencies had no role in study design, data analysis, interpretation of results, manuscript preparation or in the decision to submit this manuscript for publication.

SUPPLEMENTARY MATERIAL



Supplementary material associated with this article can be found in the online version available at <https://doi.org/10.1016/j.rec.2017.11.011>.

Mercedes Sánchez-Martínez,^{a,b,◇} Juan J. Cruz,^{b,◇}
Auxiliadora Graciani,^b Esther López-García,^{b,c}
Fernando Rodríguez-Artalejo,^{b,c} and José R. Banegas^{b,*}

^aFacultad de Ciencias y Artes, Universidad Católica "Santa Teresa de Jesús", Ávila, Spain

^bDepartamento de Medicina Preventiva y Salud Pública, Facultad de Medicina, Universidad Autónoma de Madrid/IdiPAZ y CIBER en Epidemiología y Salud Pública (CIBERESP), Madrid, Spain
^cInstituto de Alimentación IMDEA (Instituto Madrileño De Estudios Avanzados), Campus de Excelencia Internacional, Universidad Autónoma de Madrid + Consejo Superior de Investigaciones Científicas (UAM + CSIC), Madrid, Spain

*Corresponding author:

E-mail address: joseramon.banegas@uam.es

◇Both authors contributed equally to this work. (J.R. Banegas).

Available online 7 December 2017

REFERENCES

1. Laurent S, Cockcroft J. *Central aortic blood pressure*. Issy-les-Moulineaux. France: Elsevier; 2008:35–90.
2. Mancia G, Fagard R, Narkiewicz K, et al. 2013 ESH/ESC Practice Guidelines for the Management of Arterial Hypertension. *Blood Press*. 2014;23:3–16.
3. Weiss W, Gohlisch C, Harsch-Gladisch C, Tölle M, Zidek W, van der Giet M. Oscillometric estimation of central blood pressure: validation of the Mobil-O-Graph in comparison with the SphygmoCor device. *Blood Press Monit*. 2012;17:128–131.
4. Reference Values for Arterial Stiffness' Collaboration. Determinants of pulse wave velocity in healthy people and in the presence of cardiovascular risk factors: 'establishing normal and reference values'. *Eur Heart J*. 2010;31:2338–2350.
5. Herbert A, Cruickshank JK, Laurent S, Boutouyrie P; Reference Values for Arterial Measurements Collaboration. Establishing reference values for central blood pressure and its amplification in a general healthy population and according to cardiovascular risk factors. *Eur Heart J*. 2014;35:3122–3133.
6. Banegas JR, Cruz JJ, Graciani A, et al. Impact of ambulatory blood pressure monitoring on reclassification of blood pressure prevalence and control. *J Clin Hypertens*. 2015;17:453–461.

<https://doi.org/10.1016/j.rec.2017.11.011>
1885–5857/

© 2017 Sociedad Española de Cardiología. Published by Elsevier España, S.L.U. All rights reserved.

Effect of Early Treatment With Ivabradine Plus Beta-blockers on Long-term Outcomes in Patients Hospitalized With Systolic Heart Failure



Resultados a largo plazo del tratamiento precoz con ivabradina más bloqueadores beta en pacientes hospitalizados por insuficiencia cardíaca sistólica

To the Editor,

Heart rate (HR) is a parameter with prognostic value in patients with heart failure (HF), reduced ejection fraction and sinus rhythm, showing an inverse relationship with cardiovascular outcomes.¹ The ESC Heart Failure guidelines^{2,3} included the achievement of a HR < 70 bpm and a specific drug for HR slowing (ivabradine) in their treatment algorithm.

This indication is based on the SHIFT study⁴ (stable chronic HF patients). However, in our recently published ETHIC-AHF study,⁵ we demonstrated the safety and efficacy of early coadministration of ivabradine and beta-blockers (IV + BB) during hospitalization in patients with acute systolic HF and

sinus rhythm. There are no other randomized data on ivabradine use in acute HF.

The ETHIC-AHF study, whose protocol and results at 4 months have been recently published,⁵ compared the strategy recom-

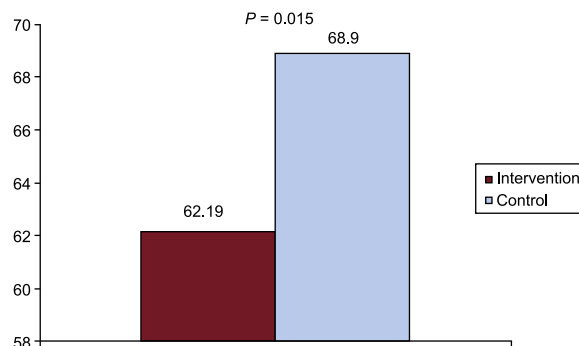


Figure 1. Heart rate in both groups at long-term follow-up.

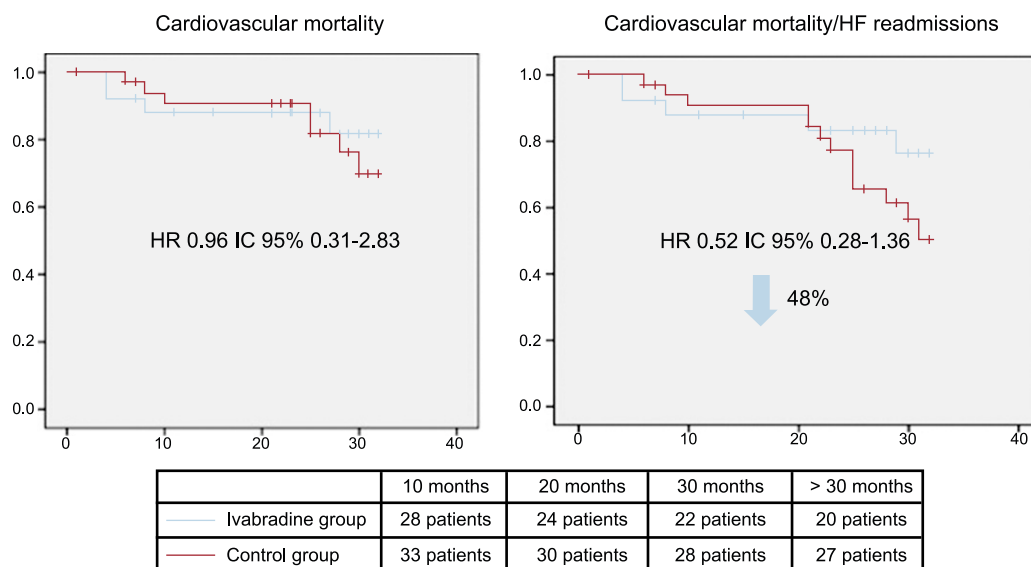


Figure 2. Rates of the primary endpoints (cardiovascular mortality and/or heart failure readmissions) and that of cardiovascular mortality in both groups at long-term follow-up. 95%CI, 95% confidence interval; HF, heart failure; HR, hazard ratio.

mended by guidelines vs that of early simultaneous administration of Iv + BB. The objective of the present study was to analyze the effect of this strategy on the long-term follow-up of these patients. Events during follow-up were analyzed by the Kaplan-Meier method and a Cox regression method was used for time to first event comparison. Analyses were adjusted for baseline HR.

Between November 2013 and April 2015, 71 patients were randomized: 33 to the intervention and 38 to the control group. Both groups were homogeneous in age, sex, blood pressure, HR, B-type natriuretic peptide levels and treatment at discharge. Patients in the intervention group had lower HR at 28 days and 4 months of discharge, greater left ventricular ejection fraction, lower B-type natriuretic peptide levels, and a trend to better functional class.

After a mean follow-up of 27 ± 11 months, patients randomized to the intervention group continued to have lower HR (62.19 ± 7.8 bpm vs 68.9 ± 10.5 bpm; $P = .015$, Figure 1). The proportion of patients taking BB was similar in both groups (94.7% vs 88.9%; $P = .49$), as was the percentage of patients receiving medium-high doses (> 5 mg/d of bisoprolol or > 25 mg/d of carvedilol), 38.9% vs 54.2%; $P = .56$. Mean dosages of bisoprolol and carvedilol were similar in both groups during follow-up. For bisoprolol: 3.8 ± 0.3 vs 3.9 ± 0.3 mg/d at discharge; 6.7 ± 0.9 vs 7.6 ± 0.7 mg/d at 4 months; 7.5 ± 0.7 vs 7.6 ± 0.7 mg/d at 1 year; and 7.4 ± 0.6 vs 7.5 ± 0.6 mg/d at the end of follow-up (intervention vs control groups). For carvedilol: 8.4 ± 1.2 vs 9.1 ± 1.3 mg/d at discharge; 20.3 ± 4.6 vs 27.8 ± 4.8 at 4 months; 25.2 ± 4.9 vs 28.6 ± 4.7 at 1 year; and 26.6 ± 5.1 vs 27.7 ± 4.8 mg/d at the end of follow-up. The proportion of patients taking ivabradine was also similar in both groups (68.4% vs 42.9%; $P = .085$), although more

patients were receiving 7.5 mg/12 h in intervention group (84.6% vs 10%; $P < .001$).

Left ventricular ejection fraction was higher in the intervention group at 4 (44.8 ± 14.4 vs $38.1 \pm 6.1\%$; $P = .039$), 12 (48.2 ± 17 vs $41.8 \pm 10\%$; $P = .002$), and 32 months (48.5 ± 15 vs $42 \pm 12\%$; $P = .1$). When we analyzed the incidence of major cardiovascular events, patients in the intervention group showed a trend to having lower rates of HF readmissions (18.8 vs 28.2%; $P = .1$), and a lower rate of the combined endpoint of HF readmissions and cardiovascular mortality (hazard ratio = 0.52; 95% confidence interval, 0.28-1.36; $P = .1$; Figure 2). In absolute numbers, 7 vs 13 patients had an event (HF readmission and/or mortality due to cardiovascular causes) beyond 4 months of follow-up. After a mean follow-up of 27 months, there were no severe drug-related adverse events.

These results show that early addition of Iv + BB in this context is safe in the short-term^{5,6} and that there was a potential prognostic benefit of this strategy in the long-term, since patients randomized to the Iv + BB strategy showed better HR control as early as 28 days after discharge, and a significant difference persisted in the long-term follow-up, despite the recommended up-titration of BB in both groups of patients. This was associated with a trend to lower HF readmissions and cardiovascular mortality rates. These results could not be reasonably attributed to differences in BB use, since the proportion of patients taking BB and other drugs was similar in both groups, as were the doses of these drugs.

We conclude that long-term follow-up analysis of the ETHIC-AHF study shows that early coadministration of Iv + BB during hospitalization due to acute systolic HF is feasible and safe, and permits better HR control from earlier stages after discharge, showing a trend to improve prognosis.

Francisco Hidalgo,* Francisco Carrasco, Juan C. Castillo,
and Manuel Anguita

*Departamento de Cardiología, Hospital Universitario Reina Sofía,
Córdoba, Spain*

* Corresponding author:

E-mail address: fjh1.87@gmail.com (F. Hidalgo).

Available online 17 January 2018

REFERENCES

1. Anguita M, Crespo MG, De Teresa E, Jiménez M, Alonso-Pulpón L, Muñoz J. Prevalence of Heart Failure in the Spanish General Population Aged Over 45 Years. *The PRICE Study*. *Rev Esp Cardiol*. 2008;61:1041–1049.
2. Mc Murray JJ, Adamopoulos S, Anker SD, et al. Developed in collaboration with the Heart Failure Association (HFA) of the ESC. ESC Guidelines for the diagnosis and

treatment of acute and chronic heart failure 2012: The task force for the diagnosis and treatment of acute and chronic heart failure 2012 of the European Society of Cardiology. *Eur Heart J*. 2012;33:1787–1847.

3. Ponikowski P, Voors AA, Anker SD, et al. 2016 ESC guidelines for the diagnosis and treatment of acute and chronic heart failure. *Eur Heart J*. 2016;37:2129–2200.
4. Swedberg K, Komajda M, Bohm M, et al. Ivabradine and outcomes in chronic heart failure (SHIFT): a randomised placebo-controlled study. *Lancet*. 2010;376:875–885.
5. Hidalgo FJ, Anguita M, Castillo JC, et al. Effect of early treatment with ivabradine combined with beta-blockers vs beta-blockers alone in patients hospitalized with heart failure and reduced left ventricular ejection fraction (ETHIC-AHF): A randomized study. *Int J Cardiol*. 2016;217:7–11.
6. Sargento L, Satendra M, Longo N, Lousada R, Dos Reis RP. Heart rate reduction with ivabradine in patients with acute decompensated systolic heart failure. *Am J Cardiovasc Drugs*. 2014;14:229–235.

<https://doi.org/10.1016/j.rec.2017.12.006>
1885-5857/

© 2017 Sociedad Española de Cardiología. Published by Elsevier España, S.L.U. All rights reserved.