

## Original article

## Analysis of Plasma Albumin, Vitamin D, and Apolipoproteins A and B as Predictive Coronary Risk Biomarkers in the REGICOR Study

Gabriel Vázquez-Oliva,<sup>a,b</sup> Alberto Zamora,<sup>b,c,d</sup> Rafel Ramos,<sup>b,e,f</sup> Isaac Subirana,<sup>g,h</sup> María Grau,<sup>d,g</sup> Irene R. Dégano,<sup>d,g,i</sup> Daniel Muñoz,<sup>j,k</sup> Montserrat Fitó,<sup>j,k</sup> Roberto Elosua,<sup>d,g,i</sup> and Jaume Marrugat<sup>d,g,\*</sup><sup>a</sup> Departamento de Cardiología, Fundación Althaia, Manresa, Barcelona, Spain<sup>b</sup> Facultad de Medicina, Universidad de Girona, Girona, Spain<sup>c</sup> Unidad de Riesgo Vascular, Hospital de Blanes, Corporación de Salud del Maresme y la Selva, Blanes, Girona, Spain<sup>d</sup> Centro de Investigación Biomédica en Red de Enfermedades Cardiovasculares (CIBERCV), Barcelona, Spain<sup>e</sup> Instituto Universitario de Investigación en Atención Primaria (IDIAP) Jordi Gol, Grupo de Investigación ISV, Unidad de Investigación en Atención Primaria, Girona, Spain<sup>f</sup> Atención Primaria, Instituto Catalán de Salud (ICS), Girona, Spain<sup>g</sup> Grupo de Epidemiología y Genética Cardiovascular, Grupo del Estudio REGICOR (REGistre Gironí del COR), IMIM (Instituto Hospital del Mar de Investigaciones Médicas), Barcelona, Spain<sup>h</sup> Centro de Investigación Biomédica en Red de Epidemiología y Salud Pública (CIBERESP), Barcelona, Spain<sup>i</sup> Universidad de Vic-Central de Cataluña (UVic-UCC), Vic, Barcelona, Spain<sup>j</sup> Grupo de Nutrición y Riesgo Cardiovascular, Grupo del Estudio REGICOR (REGistre Gironí del COR), IMIM (Instituto Hospital del Mar de Investigaciones Médicas), Barcelona, Spain<sup>k</sup> Centro de Investigación Biomédica en Red de Fisiopatología de la Obesidad y Nutrición (CIBEROBN), Barcelona, Spain

## Article history:

Received 28 July 2017

Accepted 8 January 2018

## Keywords:

Albumin

Vitamin D

Apolipoprotein A1

Apolipoprotein B

Risk functions

## ABSTRACT

**Introduction and objectives:** New biomarkers could improve the predictive capacity of classic risk functions. The aims of this study were to determine the association between circulating levels of apolipoprotein A1 (apoA1), apolipoprotein B (apoB), albumin, and 25-OH-vitamin D and coronary events and to analyze whether these biomarkers improve the predictive capacity of the Framingham-REGICOR risk function.

**Methods:** A case-cohort study was designed. From an initial cohort of 5404 individuals aged 35 to 74 years with a 5-year follow-up, all the participants who had a coronary event (n = 117) and a random group of the cohort (subcohort; n = 667) were selected. Finally, 105 cases and 651 individuals representative of the cohort with an available biological sample were included. The events of interest were angina, fatal and nonfatal myocardial infarction and coronary deaths.

**Results:** Case participants were older, had a higher proportion of men and cardiovascular risk factors, and showed higher levels of apoB and lower levels of apoA1, apoA1/apoB ratio, 25-OH-vitamin D and albumin than the subcohort. In multivariate analyses, plasma albumin concentration was the only biomarker independently associated with coronary events (HR, 0.73; P = .002). The inclusion of albumin in the risk function properly reclassified a significant proportion of individuals, especially in the intermediate risk group (net reclassification improvement, 32.3; P = .048).

**Conclusions:** Plasma albumin levels are inversely associated with coronary risk and improve the predictive capacity of classic risk functions.

© 2018 Sociedad Española de Cardiología. Published by Elsevier España, S.L.U. All rights reserved.

**Valor predictivo de la albúmina plasmática, la vitamina D y las apolipoproteínas A y B como biomarcadores de riesgo coronario en el estudio REGICOR**

## RESUMEN

**Introducción y objetivos:** La inclusión de biomarcadores en las funciones de riesgo clásicas puede mejorar la estimación del riesgo. Los objetivos del estudio son determinar la asociación entre las concentraciones de apolipoproteína A1 (apoA1), apolipoproteína B (apoB), albúmina y 25-OH-vitamina D circulantes y la incidencia de eventos coronarios y analizar si estos biomarcadores mejoran la capacidad predictiva de la función REGICOR.

**Métodos:** Estudio de cohorte de casos. De una cohorte inicial de 5.404 participantes con edades entre los 35 y los 74 años y 5 años de seguimiento, se seleccionó a todos los que presentaron un evento coronario (n = 117) y una subcohorte elegida al azar de 667 participantes. Finalmente, se incluyó a 105 casos y

## Palabras clave:

Albúmina

Vitamina D

Apolipoproteína A1

Apolipoproteína B

Funciones de riesgo

\* Corresponding author: Grupo del Estudio REGICOR (REGistre Gironí del COR), IMIM (Instituto Hospital del Mar de Investigaciones Médicas), Dr. Aiguader 88, 08003 Barcelona, Spain.

E-mail address: [jmarrugat@imim.es](mailto:jmarrugat@imim.es) (J. Marrugat).

651 participantes de la subcohorte con muestra biológica disponible. Los eventos de interés fueron la aparición de angina, infarto de miocardio mortal o no mortal y muerte por enfermedad coronaria.

**Resultados:** Los casos eran de más edad, tenían mayores proporciones de varones y factores de riesgo clásicos y concentraciones de apoB, y menores concentraciones de apoA1, cociente apoA1/apoB, 25-OH-vitamina D y albúmina que el grupo control. Al ajustar por los factores de riesgo clásicos, el único biomarcador que mantuvo la asociación con eventos coronarios fue la albúmina plasmática (HR = 0,73;  $p = 0,002$ ). Además, las concentraciones de albúmina permitieron reclasificar correctamente a un número significativo de participantes, especialmente en la categoría de riesgo moderado (mejora neta en la reclasificación = 32,3;  $p = 0,048$ ).

**Conclusiones:** La albúmina plasmática se asocia independiente e inversamente con el riesgo de eventos coronarios y mejora la capacidad predictiva de la función de riesgo REGICOR.

© 2018 Sociedad Española de Cardiología. Publicado por Elsevier España, S.L.U. Todos los derechos reservados.

## Abbreviations

ApoA1: apolipoprotein A1  
 ApoB: apolipoprotein B  
 NRI: net reclassification improvement

## INTRODUCTION

Tailoring the intensity of preventive interventions to individual needs requires the use of cardiovascular risk scores adapted to and validated in the target population.<sup>1,2</sup> Although established risk scores have been validated, they are limited by their low sensitivity, which results in a high proportion of coronary and cardiovascular events occurring in people classified as being at intermediate risk.<sup>3,4</sup> The inclusion of biomarkers in conventional risk scores could increase the precision of risk estimates.<sup>5</sup>

The various classes of biomarker that have been proposed and analyzed include genetic,<sup>6</sup> biochemical,<sup>7,8</sup> and imaging biomarkers.<sup>9</sup> Among the biochemical biomarkers, apolipoprotein A1 (apoA1), apolipoprotein B (apoB), and the ratio between them track cardiovascular risk and the relative levels of antiatherogenic and atherogenic lipoproteins.<sup>10</sup> Cardiovascular risk also shows a widely reported inverse association with plasma albumin,<sup>11</sup> which is also inversely related to oxidative and inflammatory status. Another biochemical marker is vitamin D, which also shows an inverse association with cardiovascular risk<sup>12</sup> and with several conventional cardiovascular risk factors.<sup>13</sup> However, few studies have analyzed the ability of these biomarkers to predict coronary events, either individually or in combination.

The aims of this study were as follows: *a*) to determine the associations of apoA, apoB, and albumin in plasma and vitamin D in serum with the incidence of cardiovascular events during the follow-up of a population cohort; and *b*) to examine whether these biomarkers improve the predictive function of the REGICOR risk score in a study population aged 35 to 74 years.

## METHODS

### Study Design and Participants

A case-cohort study was designed within the follow-up of the REGICOR (*Registre Glorí del COR*) population cohort study.<sup>14</sup> In REGICOR, a 6352-participant population cohort was recruited in 2005, with a response rate > 70%. Of these participants, 5404 were aged between 35 and 74 years and were free of cardiovascular disease at the time of inclusion. All participants were followed up between 2009 and 2013.

In line with the case-cohort study design, we included all participants who had a coronary event ( $n = 117$ ) together with a

random subcohort of participants included in the baseline evaluation at an approximate ratio of 1:6 ( $n = 667$ ). Of these participants, we selected for analysis those with an available biological sample (105 case participants and 651 subcohort participants). The incidence of the event of interest in the original 5404-participant sample was 2.7%; assuming a type I error rate of 5%, the case-cohort sample size ( $n = 756$ ) provides a statistical power of 80% for the statistically significant identification of a relative risk  $\geq 1.58$  per standard deviation increase in the biomarker. Statistical power was calculated using the *ccsize* function in the *gap* package in R. We also included 43 competing noncoronary cardiovascular events.

All participants were informed of the aims of the study and gave written consent. The study was approved by the local clinical research ethics committee.

### Biomarkers

Participants provided biological samples after a 10 to 14 hour fast. Once the blood was centrifuged, and after coagulation in the case of serum, samples of serum and EDTA (ethylenediaminetetraacetic acid) plasma were aliquoted and stored at  $-80^{\circ}\text{C}$  until analysis. Glucose, total cholesterol, and triglycerides were measured in serum by enzymatic methods, whereas high-density lipoprotein (HDL) cholesterol was measured directly (Roche Diagnostics; Basel, Switzerland) in a Cobas Mira Plus autoanalyzer (Roche Diagnostics). If the triglyceride concentration was  $< 300$  mg/dL, low-density lipoprotein cholesterol was estimated with the Friedewald equation.

Vitamin D was measured in serum by competitive ELISA for 25-hydroxy vitamin D (Immunodiagnostic Systems; Boldon, United Kingdom). Plasma albumin concentration was assayed by bromocresol green dye binding (ABX Diagnostics; Montpellier, France) and plasma apoA1 and apoB concentrations by immunoturbidimetric assay (ABX Diagnostics) in a Cobas Mira Plus autoanalyzer.

The variables analyzed in the Cobas Mira Plus autoanalyzer (albumin, apoA1, and apoB) were checked against external quality assurance standards from the Spanish Society of Clinical Chemistry (*Sociedad Española de Química Clínica*). Interassay variation coefficients for albumin, apoA1, apoB, and 25-OH-vitamin D were 3.19%, 3.37%, 3.21%, and 5.72%, respectively.

### Follow-up and Events of Interest

Various information sources were used during follow-up. Nonfatal events of interest were identified through regular structured telephone interviews and a re-evaluation visit, and fatal events were identified from official death records. Events of interest were the appearance of angina, fatal or nonfatal myocardial infarction, and coronary death.

Nonfatal events were validated by reviewing the medical records of participants reporting angina pectoris or a myocardial

infarction. Deaths due to coronary disease were identified according to ICD (International Classification of Diseases) codes ICD-9 410-414 and ICD-10 I20-I22, I24, I25. A committee categorized all events according to standard criteria. Angina pectoris was defined as the presence of symptoms accompanied by an objective demonstration of ischemia in the electrocardiogram or > 50% coronary stenosis by coronary angiography. Myocardial infarction was defined according to international criteria.<sup>15</sup>

Recorded competing cardiovascular events were noncoronary cardiovascular death and nonfatal cerebrovascular disease.

### Other Variables

Questionnaires and standard methods were used to determine conventional cardiovascular risk parameters<sup>14</sup>: systolic and diastolic blood pressure, total cholesterol, HDL cholesterol, smoking, and diet. Smokers were defined as participants who were active smokers or who had stopped smoking within the previous year. Diabetes was defined as baseline blood glucose  $\geq 126$  mg/dL or treatment with oral antidiabetic drugs or insulin. Cardiovascular risk was estimated with the REGICOR score validated for the Spanish population.<sup>3</sup>

### Statistical Analysis

Biomarkers of interest showing a nonnormal distribution were logarithmically transformed. Vitamin D was stratified into 3 bands widely used in the medical literature: < 30 nmol/L, 30–49 nmol/L, and  $\geq 50$  nmol/L.<sup>12</sup> Differences between the case population and subcohort in sociodemographic variables, risk factors, and biomarkers were determined using the method of Lin and Ying for case-cohort studies.<sup>16</sup> The relative risk of coronary disease associated with a 1 standard deviation increase in each biomarker of interest was estimated using the method proposed by Pintilie et al. to accommodate the existence of competing risks.<sup>17</sup> We developed 2 multivariate models, the first adjusted for age and sex and the second additionally adjusted for systolic and diastolic blood pressure, total cholesterol, HDL cholesterol, diabetes, and smoking status. Furthermore, each biomarker was analyzed separately; all biomarkers were subsequently included in the multivariate model, and only those showing a statistically significant association with the event of interest were maintained. All variables except for diabetes fulfilled the assumption of risk proportionality. We confirmed that stratification for diabetes did not significantly modify the magnitude of association between the biomarkers of interest and coronary events.

The net contribution of biomarkers to the predictive capacity of conventional risk factors was evaluated from the improvement in discrimination, determined by analyzing the difference in Harrell's C statistic adapted to case-cohort studies.<sup>18</sup> Proper reclassification was verified by estimating the categorical and continuous net reclassification improvement (NRI). NRI categories were defined using the standard cut-points for the 10-year risk of a coronary event in the Spanish population (5% and 10%).<sup>3</sup> The number of events at 10 years in each risk category was obtained by preparing event-free survival curves. The NRI confidence intervals to accommodate uncertainty in the estimates were calculated using bootstrap resampling techniques.<sup>19</sup> For the estimation of NRI in the intermediate risk group, we used the method proposed by Paynter and Cook to correct overestimation due to the use of a single risk category.<sup>20</sup>

Statistical analyses were conducted in R version 3.0.1 (R: a language and environment for statistical computing; the R Foundation for Statistical Computing, Vienna, Austria). We used the function developed by Pintilie et al. to accommodate the existence of competing risks in case-cohort studies<sup>17</sup> and wrote R code functions to calculate the C statistic for case-cohort studies.

## RESULTS

The subcohort included 13 participants with a coronary event and 11 with a competing noncoronary event. The baseline characteristics of the study population are presented in [Table 1](#). There were 105 case participants with coronary events, 43 with noncoronary cardiovascular events, and 627 subcohort participants free of coronary and other cardiovascular events at the end of follow-up. Compared with the event-free population, the case population with coronary disease was older and included a higher proportion of men, a higher prevalence of conventional risk factors, and a higher cardiovascular risk estimated with the REGICOR score. The case population also had higher levels than the event-free subcohort of apoB and lower values for apoA1, the apoA1:apoB ratio, 25-OH-vitamin D, and albumin ([Table 1](#)).

The cumulative incidence of coronary events after adjustment for competing risks is represented in [Figure](#). Separate analysis of each biomarker of interest showed that all were associated with the incidence of coronary events in the model adjusted for age and sex ([Table 2A](#), model 1). However, after adjustment for conventional risk factors, the only biomarkers maintaining an association with coronary events were the plasma concentrations of albumin and apoA1 ([Table 2A](#), model 2). In the analysis of all biomarkers in the same multivariate model, only albumin maintained a statistically significant association after adjusting for age, sex, and conventional risk factors ([Table 2B](#), model 2).

The inclusion of plasma albumin concentrations in the REGICOR risk score did not improve its discriminatory power ([Table 3](#)). However, risk reclassification analysis revealed improved risk category assignment for the case and subcohort populations. This improvement was statistically significant for continuous NRI and for NRI in individuals classified as being at intermediate risk (clinical NRI). The risk category improvement was marginally nonsignificant for categorical NRI in the whole sample ( $P = .051$ ) ([Table 3](#)). Reclassification of individuals from one risk category to another upon inclusion of albumin in the REGICOR score is shown in the [Table of the supplementary material](#).

## DISCUSSION

In this study, we found that plasma albumin concentration was inversely and independently associated with the risk of a coronary event. Moreover, the inclusion of plasma albumin improved the predictive capacity of the REGICOR score, thus improving risk category classification, especially of individuals with intermediate risk. The 25-OH-vitamin D, apoA1, and apoB concentrations and the apoA1:apoB ratio showed no independent association with the risk of coronary events.

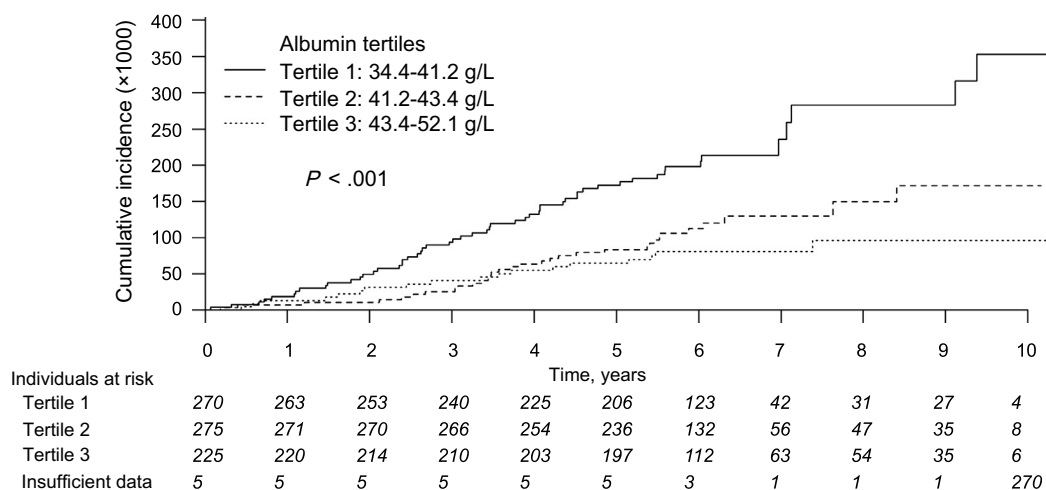
### Albumin and Cardiovascular Risk

The findings presented here reinforce the results of several studies analyzing the influence of albumin on coronary and cardiovascular risk and total mortality. A 1998 meta-analysis of data from 8 studies already confirmed the association between low albumin concentrations and an elevated risk of coronary disease.<sup>11</sup> This association was also later reported in large epidemiological studies, such as ARIC<sup>21</sup> and Framingham.<sup>22</sup> A recent study concluded that low albumin concentration explains 41% of the attributable population risk for a first acute myocardial infarction.<sup>23</sup> Low albumin concentration is also associated with cardiovascular diseases such as stroke<sup>24</sup> and with total cardiovascular risk.<sup>25</sup> Moreover, as far back as 1989, the British Regional Heart Study reported higher cardiovascular mortality in men with low systemic albumin concentrations.<sup>26</sup> These results have been

**Table 1**  
Study Population Characteristics Stratified for Coronary and Noncoronary Cardiovascular Events

	Event-free subcohort (n = 627)	Coronary disease (n = 105)	Noncoronary cardiovascular disease (n = 43)	P
Age, y	53.7 ± 10.6	61.1 ± 9.7	63.6 ± 8.5	< .001
Men	288 (45.9)	72 (68.6)	26 (60.5)	< .001
Tobacco smoking	132 (21.4)	40 (38.5)	8 (19.0)	< .001
Diabetes mellitus	80 (12.8)	33 (31.4)	13 (30.2)	< .001
Hypertension	99 (16.3)	39 (37.5)	16 (40.0)	< .001
Systolic blood pressure, mmHg	79.1 ± 9.7	137 ± 20.1	138 ± 17.8	< .001
Diastolic blood pressure, mmHg	125 ± 18.1	82.3 ± 11.5	82.1 ± 12.3	.013
Glucose, mg/dL	93 [86-102]	100 [90-125]	103 [88-114]	< .001
Total cholesterol, mg/dL	212 ± 43.6	227 ± 42.1	218 ± 42.9	< .001
LDL-C, mg/dL	138 (30.0)	150 (37.9)	140 (36.3)	.002
HDL-C, mg/dL	53.1 (13.1)	45.9 (15.1)	49.9 (11.9)	< .001
Triglycerides, mg/dL	93 [67-128]	123 [94-190]	123 [81-159]	< .001
Treatment for hypercholesterolemia	80 (12.8)	25 (23.8)	11 (25.6)	.004
Body mass index	27.2 ± 4.66	28.6 ± 4.73	28.9 ± 5.10	.012
REGICOR risk, %	3.76 ± 3.44	8.03 ± 5.6	6.91 ± 4.94	< .001
<b>Biomarkers of interest</b>				
ApoA1, g/L	1.44 ± 0.26	1.31 ± 0.27	1.42 ± 0.27	< .001
ApoB, g/L	1.05 ± 0.23	1.16 ± 0.22	1.18 ± 0.25	< .001
ApoA1:ApoB	1.44 ± 0.42	1.17 ± 0.34	1.24 ± 0.30	< .001
Albumin, g/L	42.2 ± 2.49	41.3 ± 2.59	41.7 ± 2.41	< .001
25-OH vitamin D, nmol/L	50.0 ± 16.5	45 ± 12.9	51.1 ± 17.8	.002
25-OH vitamin D < 30 nmol/L	59 (9.44)	12 (11.40)	8 (18.60)	.023
25-OH vitamin D 30-49 nmol/L	267 (42.7)	57 (54.3)	13 (30.2)	
25-OH vitamin D ≥ 50 nmol/L	299 (47.8)	36 (34.3)	22 (51.2)	

ApoA1, apolipoprotein A1; ApoB, apolipoprotein B; HDL-C, high-density lipoprotein cholesterol; LDL-C, low-density lipoprotein cholesterol. Data are expressed as No. (%), mean ± standard deviation, or median [interquartile range].



**Figure.** Cumulative incidence curves for coronary events after adjusting for the competing risk of noncoronary cardiovascular events. Insufficient data, plasma albumin data unavailable; 651 subcohort + 105 coronary events + 43 noncoronary cardiovascular events = 799; 799 – 13 coronary events and – 11 noncoronary cardiovascular events in the subcohort = 775.

confirmed in male participants in the Paris Health Study<sup>27</sup> and the National Health and Nutrition Examination Survey I,<sup>28</sup> but not in other studies.<sup>29</sup>

There is no consensus on whether albumin concentration is simply a nonspecific variable or is causally involved in cardiovascular disease.<sup>30</sup> However, the relationship could be explained by several biological properties of albumin: a) Albumin has antioxidant and anti-inflammatory properties and accounts for more than 50% of total plasma antioxidant activity due to its free-radical-binding sulfhydryl groups.<sup>31</sup> Moreover, albumin-bound bilirubin

inhibits lipid peroxidation,<sup>32</sup> and albumin interacts with factors that regulate the intensity of arterial inflammation.<sup>33</sup> b) Albumin transports free fatty acids and free cholesterol and participates in reverse cholesterol transport.<sup>34</sup> c) Albumin inhibits endothelial apoptosis and improves endothelial function.<sup>35</sup> Nevertheless, the association between albumin and cardiovascular risk appears not to be very specific, since low albumin concentrations are also associated with noncardiovascular death and cancer.<sup>36</sup>

In this study, we have provided the first evaluation of albumin as a predictive risk biomarker. We found that inclusion of plasma

**Table 2**  
Association Between Biomarkers of Interest (per Standard Deviation) and the Incidence of Coronary Events, Estimated With Different Approaches and Multivariate Models and Adjusting for Competing Risks

Variables	Model 1		Model 2	
	HR (95%CI)	P	HR (95%CI)	P
<i>A. Multivariate analysis considering each biomarker separately</i>				
ApoA1 (1 SD)	0.58 (0.44-0.75)	< .001	0.67 (0.45-0.98)	.041
ApoB (1 SD)	1.32 (1.12-1.57)	.001	1.03 (0.80-1.34)	.799
ApoA1:ApoB ratio (1 SD)	0.49 (0.37-0.65)	< .001	0.69 (0.45-1.05)	.083
25-OH vitamin D (1 SD)	0.71 (0.58-0.88)	.001	0.90 (0.73-1.11)	.334
Albumin (1 SD)	0.75 (0.61-0.91)	.005	0.73 (0.59-0.89)	.002
<i>B. Multivariate analysis including all biomarkers</i>				
ApoA1 (1 SD)	–	–	–	–
ApoB (1 SD)	–	–	–	–
ApoA1:ApoB ratio (1 SD)	0.47 (0.35-0.62)	< .001	–	–
25-OH vitamin D (1 SD)	0.72 (0.58-0.88)	.001	–	–
Albumin (1 SD)	0.71 (0.58-0.87)	.001	0.73 (0.59-0.89)	.002

ApoA1, apolipoprotein A1; ApoB, apolipoprotein B; SD, standard deviation; HR, hazard ratio; 95%CI, 95% confidence interval.

Model 1, adjusted for age and sex. Modelo 2, adjusted for age, sex, smoking, diabetes mellitus, systolic blood pressure, diastolic blood pressure, total cholesterol, and high-density lipoprotein cholesterol.

**Table 3**  
Improvement in the Predictive Capacity of the REGICOR Risk Score for Coronary Events Upon Inclusion of Plasma Albumin Concentration: Discrimination and Reclassification

Discrimination	C statistic (95%CI)	P
With classic risk factors	79.80 (75.82–83.79)	
With classic risk factors + albumin	79.94 (75.70–84.17)	
Difference	0.14 (–1.19 to 1.46)	0.841
Reclassification	Estimator (95%CI)	P
Continuous NRI	37.29 (6.25–67.00)	.018
Categorical NRI	13.79 (–0.08 to 27.66)	.051
Case patients	11.79 (–0.43 to 24.01)	.059
Control participants	2.00 (–0.47 to 4.47)	0.113
Clinical NRI	32.30 (0.29–64.31)	.048
Case patients	19.30 (–2.60 to 41.21)	.084
Control participants	13.00 (–2.04 to 28.04)	.090

95%CI, 95% confidence interval; NRI, net reclassification improvement.

albumin concentration in the REGICOR score improved the estimation of coronary risk and appropriately reclassified a significant proportion of the study population. The magnitude of the reclassification was higher than that observed with other biochemical biomarkers<sup>7</sup> or with genetic biomarkers,<sup>6</sup> and was similar to that obtained with intracoronary calcium.<sup>9</sup> These results support the usefulness of albumin as a predictive biomarker of coronary risk. Nevertheless, confirmation is needed in other cohort studies, which should also analyze the predictive capacity of simultaneously considering different types of biomarkers.

### Apolipoprotein A1/B Ratio and Cardiovascular Risk

The second biomarker analyzed in this study was the apoA1:apoB ratio. Several prospective studies have reported an association between the occurrence of coronary events and this ratio, sometimes expressed inversely as the apoB:apoA1 ratio.<sup>10,37</sup> In the INTERHEART study,<sup>38</sup> the apoB:apoA1 ratio was the biomarker associated with the highest population attributable risk, and apoB was identified as a more precise cardiovascular risk

biomarker than non-HDL-cholesterol.<sup>39</sup> In the present study, the apoA1:apoB ratio showed an inverse association with coronary risk, but this association disappeared after adjustment for conventional risk factors (total cholesterol and HDL cholesterol).

Given the lack of association with coronary risk, we did not analyze the influence of apoA1:apoB ratio on the predictive capacity of a conventional risk score. A previous study reported that inclusion of the apoA1:apoB ratio slightly improved the discriminatory capacity and reclassification of risk scores containing total cholesterol and HDL cholesterol.<sup>10</sup>

### Vitamin D and Cardiovascular Risk

Vitamin D is much more than a simple regulator of calcium and phosphorus metabolism, and is linked to many cardiovascular risk factors, including dyslipidemia, hypertension, and diabetes.<sup>40–42</sup> Nevertheless, the relationship between vitamin D concentration and coronary risk is highly controversial; although epidemiological studies indicate an association with lower cardiovascular risk,<sup>43</sup> vitamin D supplementation in experimental studies has not demonstrated a cardioprotective effect.<sup>44</sup> In the present study, the association of vitamin D concentration with reduced coronary risk disappeared after adjustment for conventional risk factors. Given the lack of an association with coronary events, we did not analyze the contribution of vitamin D concentration to the predictive capacity of a conventional risk score; however, where an association with cardiovascular risk has been observed, inclusion of vitamin D concentration did not improve risk prediction.<sup>43</sup>

### Strengths and Limitations

The strengths of this study include its prospective design and its population base, together with the evaluation of several biomarkers for their predictive association with coronary events.

Study limitations include the small number of coronary events, which limits the statistical power of the study. It should also be noted that vitamin D is subject to seasonal variations that may have influenced the results obtained.<sup>45</sup> However, re-evaluations took place at all times of the year, so a seasonal effect would seem unlikely.

## CONCLUSIONS

Plasma albumin concentration was inversely and independently associated with the risk of coronary events, and its inclusion improved the predictive capacity of the REGICOR risk score in the general population. Neither vitamin D concentration nor apoA1:apoB ratio showed an association with the incidence of coronary events independently of conventional risk factors. Larger population studies are needed to confirm these findings.

## ACKNOWLEDGMENTS

The authors gratefully acknowledge the contribution of the REGICOR study investigators and participants.

## FUNDING

This study was supported by the Spanish Ministry of Economy and Innovation through the Carlos III Health Institute and the European Regional Development Fund (*Red de Investigación Cardiovascular* RD12/0042, FIS 99/0655, FIS 94/0540, FIS 99/0013-01, FIS 99/9342, FIS P1020471, INTRASALUD P111/01801, *CIBER [Centro de Investigación Biomédica en Red] de Enfermedades Cardiovasculares, CIBER de Fisiopatología de la Obesidad y Nutrición, and CIBER de Epidemiología y Salud Pública*), a grant from the Spanish Society of Cardiology-Fundación Española del Corazón-Fuente Liviana 2011, and the Agència de Gestió d'Ajuts Universitaris i de Recerca (SGR 2014-1195). I.R. Degano received funding from the "la Caixa" RecerCaixa social program (RE087465). M. Grau was supported by a contract from the Carlos III Health Institute and the European Regional Development Fund (FIS CP12/03287).

## CONFLICTS OF INTEREST

None declared.

### WHAT IS KNOWN ABOUT THE TOPIC?

- Cardiovascular risk estimation is essential for defining the intensity of preventive intervention appropriate for each individual.
- Conventional risk scores have been validated but lack sensitivity.
- The inclusion of new biomarkers in risk scores could improve their predictive capacity.
- Potential biomarkers of interest are the circulating concentrations of albumin, apoA1, apoB, and 25-OH-vitamin D.

### WHAT DOES THIS STUDY ADD?

- Plasma albumin concentration was inversely and independently associated with the risk of coronary events.
- Inclusion of plasma albumin concentration in the REGICOR risk score improved its predictive capacity, resulting in improved classification, especially among those at intermediate risk.

## SUPPLEMENTARY MATERIAL



Supplementary material associated with this article can be found in the online version available at <https://doi.org/10.1016/j.rec.2018.01.027>

## REFERENCES

1. Piepoli MF, Hoes AW, Agewall S, et al. 2016 European Guidelines on cardiovascular disease prevention in clinical practice: The Sixth Joint Task Force of the European Society of Cardiology and Other Societies on Cardiovascular Disease Prevention in Clinical Practice. *Eur Heart J*. 2016;37:2315–2381.
2. Stone NJ, Robinson JG, Lichtenstein AH, et al. 2013 ACC/AHA guideline on the treatment of blood cholesterol to reduce atherosclerotic cardiovascular risk in adults: a report of the ACC/AHA Task Force on Practice Guidelines. *Circulation*. 2014;129:S49–S73.
3. Marrugat J, Vila J, Baena-Díez JM, et al. Relative validity of the 10-year cardiovascular risk estimate in a population cohort of the REGICOR study. *Rev Esp Cardiol*. 2011;64:385–394.
4. Jiménez Navarro MF. Comments on the 2016 ESC Guidelines on Cardiovascular Disease Prevention in Clinical Practice. *Rev Esp Cardiol*. 2016;69:894–899.
5. Hlatky MA, Greenland P, Arnett DK, et al. Criteria for evaluation of novel markers of cardiovascular risk: a scientific statement from the American Heart Association. *Circulation*. 2009;119:2408–2416.
6. Iribarren C, Lu M, Jorgenson E, et al. Clinical Utility of Multimarker Genetic Risk Scores for Prediction of Incident Coronary Heart Disease: A Cohort Study Among Over 51 Thousand Individuals of European Ancestry. *Circ Cardiovasc Genet*. 2016;9:531–540.
7. Blankenberg S, Zeller T, Saarela O, et al. Contribution of 30 biomarkers to 10-year cardiovascular risk estimation in 2 population cohorts: the MONICA, risk, genetics, archiving, and monograph (MORGAM) biomarker project. *Circulation*. 2010;121:2388–2397.
8. Fernández-Bergés D, Consuegra-Sánchez L, Peñafiel J, et al. Metabolic and Inflammatory Profiles of Biomarkers in Obesity, Metabolic Syndrome, and Diabetes in a Mediterranean Population. DARIOS Inflammatory Study. *Rev Esp Cardiol*. 2014;67:624–631.
9. Gepner AD, Young R, Delaney JA, et al. Comparison of Carotid Plaque Score and Coronary Artery Calcium Score for Predicting Cardiovascular Disease Events: The Multi-Ethnic Study of Atherosclerosis. *J Am Heart Assoc*. 2017;6:e005179.
10. Di Angelantonio E, Gao P, Pennells L, et al. Emerging Risk Factors Collaboration. Lipid-related markers and cardiovascular disease prediction. *JAMA*. 2012;307:2499–2506.
11. Danesh J, Collins R, Appleby P, et al. Association of fibrinogen, C-reactive protein, albumin, or leukocyte count with coronary heart disease: meta-analysis of prospective studies. *JAMA*. 1998;279:1477–1482.
12. Perna L, Schöttker B, Holleczer B, Brenner H. Serum 25-hydroxyvitamin D and incidence of fatal and nonfatal cardiovascular events: a prospective study with repeated measurements. *J Clin Endocrinol Metab*. 2013;98:4908–4915.
13. Muscogiuri G, Annweiler C, Duval G, et al. Vitamin D and cardiovascular disease: From atherosclerosis to myocardial infarction and stroke. *Int J Cardiol*. 2017;230:577–584.
14. Grau M, Subirana I, Elosua R, et al. Trends in cardiovascular risk factor prevalence (1995–2000–2005) in northeastern Spain. *Eur J Cardiovasc Prev Rehabil*. 2007;14:653–659.
15. Luepker RV, Apple FS, Christenson RH, et al. Case definitions for acute coronary heart disease in epidemiology and clinical research studies: a statement from the AHA Council on Epidemiology and Prevention; AHA Statistics Committee; World Heart Federation Council on Epidemiology and Prevention; the European Society of Cardiology Working Group on Epidemiology and Prevention; Centers for Disease Control and Prevention; and the National Heart, Lung, and Blood Institute. *Circulation*. 2003;108:2543–2549.
16. Lin D, Ying Z. Cox regression with incomplete covariate measurements. *J Am Stat Assoc*. 1993;88:1341–1349.
17. Pintilie M, Bai Y, Yun L, Hodgson DC. The analysis of case cohort design in the presence of competing risks with application to estimate the risk of delayed cardiac toxicity among Hodgkin lymphoma survivors. *Stat Med*. 2010;29:2802–2810.
18. Sanderson J, Thompson SG, White IR, Aspelund T, Pennells L. Derivation and assessment of risk prediction models using case-cohort data. *BMC Med Res Methodol*. 2013;13:113.
19. Steyerberg EW, Pencina MJ. Reclassification calculations for persons with incomplete follow-up. *Annals Intern Med*. 2010;152:195–196.
20. Paynter NP, Cook NR. A bias-corrected net reclassification improvement for clinical subgroups. *Med Decis Making*. 2013;33:154–162.
21. Nelson JJ, Liao D, Sharrett AR, et al. Serum albumin level as a predictor of incident coronary heart disease: the Atherosclerosis Risk in Communities (ARIC) Study. *Am J Epidemiol*. 2000;151:468–477.
22. Djousse L, Rothman KJ, Cupples LA, et al. Serum albumin and risk of myocardial infarction and all-cause mortality in the Framingham Offspring Study. *Circulation*. 2002;106:2919–2924.

23. Yang Q, He YM, Cai DP, Yang XJ, Xu HF. Risk burdens of modifiable risk factors incorporating lipoprotein (a) and low serum albumin concentrations for first incident acute myocardial infarction. *Sci Rep*. 2016;6:35463.
24. Xu WH, Dong C, Rundek T, Elkind MSV, Sacco RL. Serum Albumin Levels Are Associated With Cardioembolic and Cryptogenic Ischemic Strokes Northern Manhattan Study. *Stroke*. 2014;45:973–978.
25. Schalk BW, Visser M, Bremmer MA, Penninx BW, Bouter LM, Deeg DJ. Change of Serum Albumin and Risk of Cardiovascular Disease and All-Cause Mortality Longitudinal Aging Study Amsterdam. *Am J Epidemiol*. 2006;164:969–977.
26. Phillips A, Shaper AG, Whincup PH. Association between serum albumin and mortality from cardiovascular disease, cancer, and other causes. *Lancet*. 1989;2:1434–1436.
27. Darne B, Ducimetiere P, Guize L. Serum albumin and mortality. *Lancet*. 1990;335:350–351.
28. Gillum RF, Makuc DM. Serum albumin, coronary heart disease, and death. *Am Heart J*. 1992;123:507–513.
29. Law MR, Morris JK, Wald NJ, Hale AK. Serum Albumin and Mortality in the BUPA Study. *Int J Epidemiol*. 1994;23:38–41.
30. Gillum RF. Assessment of serum albumin concentration as a risk factor for stroke and coronary disease in African Americans and whites. *J Natl Med Assoc*. 2000;92:3–9.
31. Roche M, Rondeau P, Singh NR, Tarnus E, Bourdon E. The antioxidant properties of serum albumin. *FEBS Lett*. 2008;582:1783–1787.
32. Neuzil J, Stocker R. Free and albumin-bound bilirubin are efficient coantioxidants for  $\alpha$ -tocopherol, inhibiting plasma and low density lipoprotein lipid peroxidation. *J Biol Chem*. 1994;269:16712–16719.
33. Levitt DG, Levitt MD. Human serum albumin homeostasis: a new look at the roles of synthesis, catabolism, renal and gastrointestinal excretion, and the clinical value of serum albumin measurements. *Int J Gen Med*. 2016;9:229–255.
34. Sankaranarayanan S, De la Llera-Moya M, Drazul-Schrader D, Phillips MC, Kellner-Weibel G, Rothblat GH. Serum albumin acts as a shuttle to enhance cholesterol efflux from cells. *J Lipid Res*. 2013;54:671–676.
35. Zoellner H, Höfler M, Beckmann R, et al. Serum albumin is a specific inhibitor of apoptosis in human endothelial cells. *J Cell Sci*. 1996;109:2571–2580.
36. Phillips A, Shaper AG, Whincup PH. Association between serum albumin and mortality from cardiovascular disease, cancer, and other causes. *Lancet*. 1989;2:1434–1436.
37. Parish S, Offer A, Clarke R, et al. Lipids and Lipoproteins and Risk of Different Vascular Events in the MRC/BHF Heart Protection Study. *Circulation*. 2012;125:2469–2478.
38. Yusuf S, Hawken S, Ounpuu S, et al. Effect of potentially modifiable risk factors associated with myocardial infarction in 52 countries (the INTERHEART study): case-control study. *Lancet*. 2004;364:937–952.
39. Sniderman AD, Islam S, Yusuf S, McQueen MJ. Discordance analysis of apolipoprotein B and non-high density lipoprotein cholesterol as markers of cardiovascular risk in the INTERHEART study. *Atherosclerosis*. 2012;225:444–449.
40. Baz-Hecht M, Goldfine AB. The impact of vitamin D deficiency on diabetes and cardiovascular risk. *Curr Opin Endocrinol Diabetes Obes*. 2010;17:113–119.
41. Martins D, Wolf M, Pan D, et al. Prevalence of cardiovascular risk factors and the serum levels of 25-hydroxyvitamin D in the United States: data from the Third National Health and Nutrition Examination Survey. *Arch Intern Med*. 2007;167:1159–1165.
42. Forman JP, Giovannucci E, Holmes MD, et al. Plasma 25-hydroxyvitamin D levels and risk of incident hypertension. *Hypertension*. 2007;49:1063–1069.
43. Tunstall-Pedoe H, Woodward M, Hughes M, et al. MORGAM Investigators. Prime mover or fellow traveller: 25-hydroxy vitamin D's seasonal variation, cardiovascular disease and death in the Scottish Heart Health Extended Cohort (SHHEC). *Int J Epidemiol*. 2015;44:1602–1612.
44. Scragg R, Stewart AW, Waayer D, et al. Effect of Monthly High-Dose Vitamin D Supplementation on Cardiovascular Disease in the Vitamin D Assessment Study: A Randomized Clinical Trial. *JAMA Cardiol*. 2017;2:608–616.
45. Bonelli P, Buonocore R, Aloe R, Lippi G. Blood Sampling Seasonality as an Important Preanalytical Factor for Assessment of Vitamin D Status. *J Med Biochem*. 2016;35:113–117.