

Original article

Impact of renin-angiotensin system blockade on the prognosis of acute coronary syndrome based on left ventricular ejection fraction



Sergio Raposeiras-Roubín,^{a,*} Emad Abu-Assi,^a María Cespón-Fernández,^a Borja Ibáñez,^b José Manuel García-Ruiz,^b Fabrizio D'Ascenzo,^c Jose Paulo Simao Henriques,^d Jorge Saucedo,^e Berenice Caneiro-Queija,^a Rafael Cobas-Paz,^a Isabel Muñoz-Pousa,^a Stephen B. Wilton,^f José Ramón González Juanatey,^g Wouter J. Kikkert,^d Iván Núñez-Gil,^h Albert Ariza-Solé,ⁱ Xiantao Song,^j Dimitrios Alexopoulos,^k Christoph Liebetrau,^l Tetsuma Kawaji,^m Fiorenzo Gaita,^c Zenon Huczek,ⁿ Shao-Ping Nie,^o Yan Yan,^o Toshiharu Fujii,^p Luis Correia,^q Masa-aki Kawashiri,^r Sasko Kedev,^s Danielle Southern,^f Emilio Alfonso,^h Belén Terol,^h Alberto Garay,ⁱ Dongfeng Zhang,^j Yalei Chen,^j Ioanna Xanthopoulou,^k Neriman Osman,^l Helge Möllmann,^l Hiroki Shiomi,^m Francesca Giordana,^c Michal Kowara,ⁿ Krzysztof Filipiak,ⁿ Xiao Wang,^o Jing-Yao Fan,^o Yuji Ikari,^r Takuya Nakahayashi,^r Kenji Sakata,^r Masakazu Yamagishi,^r Oliver Kalpak,^s and Andrés Íñiguez-Romo^a

^a Servicio de Cardiología, Hospital Universitario Álvaro Cunqueiro, Vigo, Pontevedra, Spain

^b Centro Nacional de Investigaciones Cardiovasculares Carlos III, Madrid, Spain

^c Cardiology Department, San Giovanni Battista Molinette Hospital, Turin, Italy

^d Cardiology Department, University of Amsterdam, Academic Medical Center, Amsterdam, the Netherlands

^e Cardiology Department, NorthShore University Hospital, Chicago, Illinois, United States

^f Cardiology Department, Libin Cardiovascular Institute of Alberta, Calgary, Canada

^g Servicio de Cardiología, Hospital Clínico, Santiago de Compostela, A Coruña, Spain

^h Servicio de Cardiología, Hospital San Carlos, Madrid, Spain

ⁱ Servicio de Cardiología, Hospital Bellvitge, Barcelona, Spain

^j Cardiology Department, Anzhen Hospital, Beijing, China

^k Cardiology Department, University Patras Hospital, Patras, Greece

^l Cardiology Department, Kerckhoff Heart and Thorax Center, Frankfurt, Germany

^m Cardiology Department, University Graduate School of Medicine, Kyoto, Japan

ⁿ Cardiology Department, University Clinical Hospital, Warsaw, Poland

^o Cardiology Department, Beijing Anzhen Hospital, Capital Medical University, Beijing, China

^p Cardiology Department, Tokai University School of Medicine, Tokai, Japan

^q Cardiology Department, Hospital Sao Rafael, Salvador, Brazil

^r Cardiology Department, University Graduate School of Medicine, Kanazawa, Japan

^s Cardiology Department, University Clinic of Cardiology, Skopje, Macedonia

Article history:

Received 2 October 2018

Accepted 21 February 2019

Available online 17 May 2019

Keywords:

Angiotensin-converting enzyme inhibitors

Angiotensin receptor blockers

Acute coronary syndromes

Percutaneous coronary intervention

Mortality

ABSTRACT

Introduction and objectives: For patients with acute coronary syndrome (ACS) treated with percutaneous coronary intervention (PCI), it is unclear whether angiotensin-converting enzyme inhibitors (ACEI) or angiotensin receptor blockers (ARB) are associated with reduced mortality, particularly with preserved left ventricular ejection fraction (LVEF). The goal of this study was to determine the association between ACEI/ARB and mortality in ACS patients undergoing PCI, with and without reduced LVEF.

Methods: Data from the BleeMACS registry were used. The endpoint was 1-year all-cause mortality. The prognostic value of ACEI/ARB was tested after weighting by survival-time inverse probability and after adjustment by Cox regression, propensity score, and instrumental variable analysis.

Results: Among 15 401 ACS patients who underwent PCI, ACEI/ARB were prescribed in 75.2%. There were 569 deaths (3.7%) during the first year after hospital discharge. After multivariable adjustment, ACEI/ARB were associated with lower 1-year mortality, $\leq 40\%$ (HR, 0.62; 95%CI, 0.43–0.90; $P = .012$). The relative risk reduction of ACEI/ARB in mortality was 46.1% in patients with LVEF $\leq 40\%$, and 15.7% in patients with LVEF $> 40\%$ (P value for treatment-by-LVEF interaction = .008). For patients with LVEF $> 40\%$, ACEI/ARB was associated with lower mortality only in ST-segment elevation myocardial infarction (HR, 0.44; 95%CI, 0.21–0.93; $P = .031$).

Conclusion: The benefit of ACEI/ARB in decreasing mortality after an ACS in patients undergoing PCI is concentrated in patients with LVEF $\leq 40\%$, and in those with LVEF $> 40\%$ and ST-segment elevation myocardial infarction. In non-ST-segment elevation-ACS patients with LVEF $> 40\%$, further studies are needed to assess the prognostic impact of ACEI/ARB.

© 2019 Published by Elsevier España, S.L.U. on behalf of Sociedad Española de Cardiología.

SEE RELATED CONTENT:

<https://doi.org/10.1016/j.rec.2019.08.007>

* Corresponding author: Servicio de Cardiología, Hospital Universitario Álvaro Cunqueiro, Estrada Clara Campoamor 341, 36212 Vigo, Pontevedra, Spain.
E-mail address: raposeiras26@hotmail.com (S. Raposeiras-Roubín).

<https://doi.org/10.1016/j.rec.2019.02.012>

1885-5857/© 2019 Published by Elsevier España, S.L.U. on behalf of Sociedad Española de Cardiología.

Impacto del bloqueo del sistema renina-angiotensina en el pronóstico del síndrome coronario agudo en función de la fracción de eyección

RESUMEN

Palabras clave:

Inhibidores de la enzima de conversión de la angiotensina
Antagonistas del receptor de la angiotensina II
Síndrome coronario agudo
Intervención coronaria percutánea
Mortalidad

Introducción y objetivos: No está clara la asociación entre los inhibidores de la enzima de conversión de la angiotensina (IECA) o los antagonistas del receptor de la angiotensina II (ARA-II) y la mortalidad de los pacientes con síndrome coronario agudo (SCA) sometidos a intervención coronaria percutánea (ICP) con fracción de eyección del ventrículo izquierdo (FEVI) conservada. Nuestro objetivo es determinar dicha asociación en pacientes con FEVI conservada o reducida.

Métodos: Se analizaron datos procedentes del registro BleeMACS. El objetivo principal fue la mortalidad a 1 año. Se aplicaron ponderación por la probabilidad inversa del tiempo de supervivencia y ajustes por regresión de Cox, puntuación de propensión y variables instrumentales.

Resultados: De los 15.401 pacientes con SCA sometidos a ICP, se prescribieron IECA/ARA-II al 75,2%. Se produjeron 569 muertes (3,7%) durante el primer año tras el alta hospitalaria. Después del ajuste multivariado, los IECA/ARA-II se asociaron con menor mortalidad, pero solo en los pacientes con FEVI \leq 40% (HR = 0,62; IC95%, 0,43-0,90; $p = 0,012$). Con los IECA/ARA-II, la reducción del riesgo relativo de la mortalidad estimada fue del 46,1% en los pacientes con FEVI \leq 40% y del 15,7% en aquellos con FEVI $>$ 40% ($p_{\text{interacción}} = 0,008$). En los pacientes con FEVI $>$ 40%, los IECA/ARA-II se asociaron con menor mortalidad solo por infarto agudo de miocardio con elevación del segmento ST (HR = 0,44; IC95%, 0,21-0,93; $p = 0,031$).

Conclusiones: El beneficio de los IECA/ARA-II en mortalidad tras ICP por SCA se concentra en pacientes con FEVI \leq 40% y aquellos con FEVI $>$ 40% e infarto agudo de miocardio con elevación del segmento ST. Se precisan estudios contemporáneos que analicen el impacto de los IECA/ARA-II en pacientes con SCA sin elevación del segmento ST y FEVI $>$ 40%.

© 2019 Publicado por Elsevier España, S.L.U. en nombre de Sociedad Española de Cardiología.

Abbreviations

ACEI: angiotensin-converting enzyme inhibitors
ACS: acute coronary syndrome
ARB: angiotensin receptor blockers
DAPT: dual antiplatelet therapy
HF: heart failure
LVEF: left ventricular ejection fraction

INTRODUCTION

Angiotensin-converting enzyme inhibitors (ACEI) and angiotensin receptor blockers (ARB) are part of the 4 therapies that are considered evidence-based medications after acute coronary syndromes (ACS), along with dual antiplatelet therapy (DAPT), beta-blockers, and statins.^{1,2} However, the evidence on the benefit of ACEI/ARB comes from a clinical scenario that is very different from the current one, with a very low rate ($< 20\%$) of percutaneous coronary intervention (PCI) and treatment with DAPT and statins.^{3–7} With the exception of patients with reduced left ventricular ejection fraction (LVEF) $\leq 40\%$, where the evidence is large and consistent^{8–10}—complemented by trials conducted in the field of heart failure (HF)^{11,12}—, the evidence on the prognostic impact of ACEI/ARB in patients with LVEF $> 40\%$ treated with PCI, DAPT, and statins is scarce and also contradictory.^{13–16} Despite this obsolete and outdated evidence, clinical practice guidelines continue to favor the use of ACEI/ARB in all post-ACS patients, beyond patients with LVEF $\leq 40\%$.^{1,2}

Taking into account this “time gap” between the clinical trials and the current guideline recommendations, the availability of exploratory data analyzing whether the results of pre-PCI trials are still valid in the current era of PCI should be of great clinical value. In this study, we aimed to analyze the impact of post-ACS ACEI/ARB in patients undergoing PCI and treated according to current

recommendations, with high rates of DAPT, beta-blockers, and statins.

METHODS

Study design and population

The analyses were based on data from the BleeMACS registry. BleeMACS is a retrospective, observational, multicenter cohort registry involving 15 401 consecutive patients. The inclusion and exclusion criteria, data collection, and variables have been described previously.¹⁷ Briefly, eligible patients were all consecutive adult patients (≥ 18 years) discharged with a definitive diagnosis of ACS, defined according to clinical guidelines^{1,2} as evidence of significant coronary artery disease on coronary angiography (stenosis $\geq 50\%$ in left main coronary artery or $\geq 70\%$ in the rest of the coronary arteries) and who underwent in-hospital PCI, with follow-up data for 1 year. Participants were recruited from 15 hospitals from North and South America (Canada and Brazil), Europe (Germany, Poland, the Netherlands, Spain, Italy, and Greece), and Asia (China and Japan). Enrollment was conducted from November 2003 through June 2014. More information about the BleeMACS design and study population is shown in the supplementary data (Information about BleeMACS registry). The study protocol conforms to the ethics guidelines of the 1975 Declaration of Helsinki as reflected in a priori approval of the ethics committee of each center. The study was registered in ClinicalTrials.gov (NCT02466854).

Follow-up and outcomes

The primary outcome was all-cause mortality, with comparison of patients treated with ACEI/ARB at discharge vs those not treated. The prescription of ACEI/ARB was based on the clinical judgment of the treating physician. All patients were systematically followed up for 1 year to assess vital status, ascertained by trained research coordinators at each participating site. Data on vital status were

obtained from hospital and/or administrative data records, and/or by contacting the patients or their relatives by telephone, when necessary.

Statistical analyses

The statistical analysis was performed with SPSS version 24.0, R version 3.2.2, and Stata MP64 version 14. Baseline characteristics according to treatment with ACEI/ARB were described by using number and percentage for categorical data and standardized mean difference for continuous data, respectively. Differences in characteristics were assessed by using chi-square tests and 2-sample Student *t* tests. The association between ACEI/ARB exposure and 1-year death was studied in robust Cox proportional hazards models with adjustment for potential confounders at baseline. The multivariable model risk adjustment was performed with all variables associated with postdischarge mortality based on clinical plausibility or *P* value < .05 in the univariate Cox analyses (univariate cox analysis and [Table 1 of the supplementary data](#)). Because of important differences in key baseline characteristics depending on prescription of ACEI/ARB therapy ([Table 1](#)), we complemented this analysis using a propensity score (PS) analysis.

PS were estimated using a nonparsimonious multivariable logistic regression model, with ACEI/ARB therapy as the dependent variables and those characteristics that differed between patients treated and not treated with ACEI/ARB ([Table 1](#)) as covariates. Subsequent PS matching was performed to assemble a cohort in which all the measured covariates would be well balanced across the comparator group (additional details are presented in propensity score analysis, [Table 2](#) and [Figures 2–4 of the supplementary data](#)). In the PS-matched population (constituted by 2 groups of 3 765 patients with similar characteristics according to prescription of ACEI or not), the reduction in death rate was compared using a robust stratified Cox regression model. Survival-time inverse probability weighting propensity score analysis (IPW) was also used to evaluate the association between ACEI/ARB use and mortality. The effect of ACEI/ARB was graphically represented in Kaplan–Meier curves adjusted by IPW, to balance the covariate distribution between the treatment and control observations, and by those covariates associated with postdischarge mortality in the univariate Cox analyses, to further mitigate residual confounding in the survival modeling. We complemented the analysis with an augmented IPW (AIPW) to estimate the average treatment effects (ATEs), in a doubly robust method that combined both the properties of the regression-based estimator and the IPW estimator.

Table 1
Baseline characteristics according to prescription or not of ACEI/ARB at discharge

Variables	ACEI/ARB at hospital discharge		<i>P</i>
	Yes (n = 11 581; 75.2%)	No (n = 3820; 24.8%)	
Age, y	63.7 ± 12.6	63.5 ± 13.0	.410
Female sex, %	22.6	25.4	< .001
Region, %			< .001
Europe	66.7	59.7	
America	19.1	22.4	
Asia	14.2	17.9	
Year			< .001
2003–2006	19.9	29.9	
2007–2010	44.9	47.3	
2011–2015	35.2	22.8	
Diabetes mellitus, %	24.8	21.6	< .001
Hypertension, %	61.3	50.1	< .001
Dyslipidemia, %	53.7	49.1	< .001
Peripheral artery disease, %	5.9	5.9	.934
Prior myocardial infarction, %	12.1	11.6	.477
Prior heart failure, %	3.3	3.3	.991
Prior stroke, %	5.8	6.3	.241
Known malignant disease, %	5.7	7.0	.005
Unstable angina, %	13.0	14.5	.016
ST-segment elevation myocardial infarction, %	58.6	56.4	.014
Killip class ≥ II	13.8	12.5	.074
Left ventricular ejection fraction ≤ 40%, %	16.1	11.9	< .001
Hemoglobin at admission, g/dL	14.1 ± 1.8	13.9 ± 1.8	< .001
Creatinine at admission, mg/dL	0.9 ± 0.4	1.0 ± 0.7	< .001
Multivessel coronary disease, %	48.9	48.3	.302
Complete revascularization, %	62.0	58.6	< .001
Dual antiplatelet therapy, %	94.9	93.0	< .001
Oral anticoagulation, %	5.4	3.9	< .001
Beta-blockers, %	86.0	64.8	< .001
Statins, %	94.3	88.9	< .001

ACEI/ARB, angiotensin-converting enzyme inhibitors/angiotensin receptor blockers.

Table 2

Analyses to assess the prognostic impact of angiotensin-converting enzyme inhibitors/angiotensin receptor blockers on 1-year mortality

Population	Analysis	Complete cases	
Total population			
Cox regression	HR	95%CI	P
Univariate	0.617	0.518-0.734	< .001
Multivariable*	0.762	0.633-0.917	.004
Adjusted by IPW	0.777	0.645-0.935	.008
After PS matching	0.713	0.572-0.888	.004
AIPW	Coefficient	95%CI	P
ATE (risk difference)	-0.008	-0.015 to -0.001	.034
Instrumental variable	Coefficient	95%CI	P
Relative risk reduction	-0.234	-0.328 to -0.132	.001
Subgroups by LVEF			
LVEF ≤ 40			
Cox regression	HR	95%CI	P
Univariate	0.397	0.284-0.555	< .001
Multivariable*	0.620	0.428-0.899	.012
Adjusted by IPW	0.523	0.357-0.765	.001
After PS matching	0.417	0.262-0.665	.001
AIPW	Coefficient	95%CI	P
ATE (risk difference)	-0.026	-0.055 to 0.005	.076
Instrumental Variable	Coefficient	95%CI	P
Relative risk reduction	-0.461	-0.663 to -0.259	< .001
Subgroups by LVEF			
LVEF > 40			
Cox regression	HR	95%CI	P
Univariate	0.677	0.549-0.833	< .001
Multivariable*	0.809	0.650-1.007	.058
Adjusted by IPW	0.876	0.703-1.092	.239
After PS matching	0.838	0.652-1.077	.174
AIPW	Coefficient	95%CI	P
ATE (risk difference)	-0.005	-0.012 to 0.001	.121
Instrumental Variable	Coefficient	95%CI	P
Relative risk reduction	-0.157	-0.264 to -0.049	.004

95%CI, 95% confidence interval; AIPW, augmented inverse probability weighting; ATE, average treatment effect; CI, confidence interval; HR, hazard ratio; IPW, inverse probability weighting; LVEF, left ventricular ejection fraction; PS, propensity score.

* Adjustment for age, female sex, country, year, diabetes mellitus, hypertension, dyslipidemia, peripheral artery disease, prior myocardial infarction, prior heart failure, prior stroke, known malignant disease, unstable angina, ST-segment elevation myocardial infarction, Killip class ≥ II, left ventricular ejection fraction, hemoglobin at admission, creatinine at admission, multivessel coronary disease, complete revascularization, dual antiplatelet therapy, oral anticoagulation, beta-blockers, statins.

The ATE coefficient assesses the absolute risk difference in 1-year death rate between patients treated and not treated with ACEI/ARB. Given that propensity scoring adjusts for measured confounding only, an instrumental variable analysis with annual rates of each hospital for the prescription of guideline-indicated treatments (DAPT, beta-blockers, statins, and ACEI/ARB) as the instrument was used to further assess potential selection bias (more information in instrumental variable analysis and [Table 3 of the supplementary data](#)). The coefficient of instrumental variable analysis shows the relative risk reduction in death rate with ACEI/ARB. Analyses were undertaken for the overall ACS cohort and separately for cases with LVEF ≤ 40% and > 40% (the cutoff for LVEF of 40% was based on European guideline recommendations for acute coronary syndrome^{1,2}). In the group of patients with LVEF > 40%, we separately analyzed patients with ST-segment elevation myocardial infarction (STEMI) and high-risk conditions (HF, renal failure, diabetes

mellitus [DM], arterial hypertension) ([Figure 1](#)). These high-risk conditions were defined based on recommendations of European and American guidelines for treatment of ACS.^{1,2} An interaction test was carried out as part of the Cox regression models performed in the study to assess the treatment-by-subgroup interaction. A *P*-value < .05 was considered statistically significant.

Missing data

Missing data were handled by multiple imputations using the fully conditional specification method (an iterative Markov Chain Monte Carlo algorithm), generating 10 imputed datasets using all applicable adjustment variables and all outcome variables as predictors ([supplementary data, Multiple Imputation](#)). The effect of ACEI/ARB therapy on the mortality rate was computed separately in the 10 imputed data sets and then averaged over data sets using Rubin's combination rules (Imputed Datasets Analysis and [Tables 4-13 of the supplementary data](#)). Several sensitivity analyses were performed (additional details in Complete Case Analysis, [Tables 14-16 and Figures 5-10 of the supplementary data](#)).

RESULTS

Prescription of ACEI/ARB

ACEI/ARB were prescribed in 75.2% (n = 11 581) of the 15 401 patients. There were significant differences in baseline characteristics between patients with and without ACEI/ARB ([Table 1](#)). In particular, patients who received ACEI/ARB tended to be at higher ischemic risk (including diabetes, hypertension, and dyslipidemia) compared with those not receiving ACEI/ARB. Patients treated with ACEI/ARB had worse renal function, but higher LVEF values, than patients not treated with ACEI/ARB, and the concomitant use of DAPT, beta-blockers, and statins was more frequent with ACEI/ARB prescription.

Benefit of ACEI/ARB in the total ACS population

Of the entire cohort (N = 15 401), there were 569 deaths (3.7%) during the first year after hospital discharge. Unadjusted 1-year mortality was significantly lower in patients who received ACEI/ARB compared with those who did not (3.2% vs 5.1%, *P* < .001). After weighting and adjustment, using multivariable Cox analysis adjustment for those variables associated with mortality in the univariate analysis ([Table 1 of the supplementary data](#)), and for PS techniques (PS matching, IPW, and AIPW), treatment with ACEI/ARB continued to be associated with lower 1-year mortality ([Table 2](#)). Specifically, there was a significant absolute risk difference of 0.8% in 1-year postdischarge mortality between patients treated and not treated with ACEI/ARB, and a significant relative risk reduction of 1-year mortality of 23.4%, according to the AIPW regression adjustment and instrumental variable analysis, respectively ([Table 2](#)).

ACEI/ARB according to LVEF

Of the 2316 patients (15.0%) with LVEF ≤ 40%, 1861 (80.4%) were treated with ACEI/ARB. Of the 13 085 patients (85.0%) with LVEF > 40%, 9720 (74.3%) were treated with ACEI/ARB. One-year mortality was 6.9% (n = 161) and 3.1% (n = 409) in patients with and without LVEF ≤ 40%, respectively. Therapy with ACEI/ARB was associated with a higher mortality reduction with lower LVEF

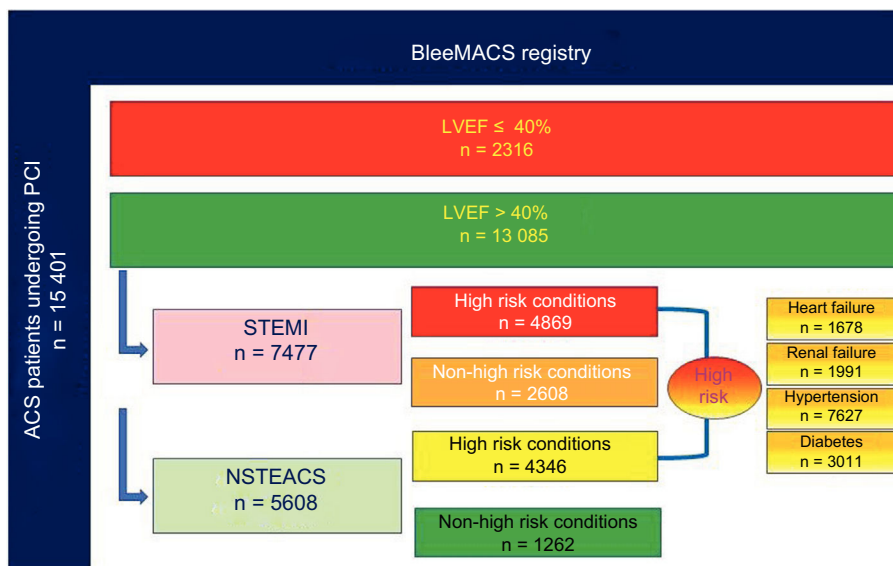


Figure 1. Study population according to LVEF (> 40% or ≤ 40%), type of ACS (STEMI or NSTEMI/ACS), and high-risk conditions (heart failure, renal failure, diabetes mellitus, hypertension). ACS, acute coronary syndrome; LVEF, left ventricular ejection fraction; NSTEMI/ACS, non-ST-segment elevation ACS; STEMI, ST-segment elevation myocardial infarction.

(Figure 2). ACEI/ARB was strongly associated with lower mortality in patients with LVEF ≤ 40% after weighting and adjustment for the different methods (Table 2, Figure 3), with an absolute and relative mortality reduction of 2.6% (*P* value for ATE according to AIPW regression adjustment = .076) and 46.1% (*P* value for instrumental variable analysis < .001), respectively. For patients with LVEF > 40%, ACEI/ARB therapy was not associated with lower mortality in the various Cox analyses (Table 2, Figure 3), or with the AIPW regression adjustment (relative risk reduction of 0.5%, 95%CI, -1.2% to 0.1%). However, the coefficient of instrumental variable analysis showed a significant relative risk reduction of 15.7% (95%CI, -26.4% to -4.9%). The interaction *P* value for treatment-by-LVEF was significant (.008), indicating that the clinical benefit of ACEI/ARB was concentrated in patients with LVEF ≤ 40%. These results (from the imputed data cohort) were

consistent with those observed in the case-complete cohort (Tables 14-16 and Figure 5-10 of the supplementary data).

Benefit of ACEI/ARB in STEMI and high-risk patients with LVEF > 40%

In the group of patients with LVEF > 40% (*n* = 13,085), 7477 (57.1%) had STEMI (Figure 3). In these patients with STEMI, a specific robust Cox analysis, adjusted by IPW and by those variables associated with mortality in the univariate analysis, showed a lower 1-year mortality in patients treated with ACEI/ARB vs those not treated with ACEI/ARB (HR 0.44; 95%CI, 0.21-0.93; *P* = .031), which was not observed in patients with non-ST-segment elevation ACS (NSTEMI/ACS) (Figure 4A). The interaction *P* value for treatment-by-ACS type was significant (.001), indicating that the clinical benefit of ACEI/ARB in patients with LVEF > 40% was observed only in patients with STEMI (not in those with

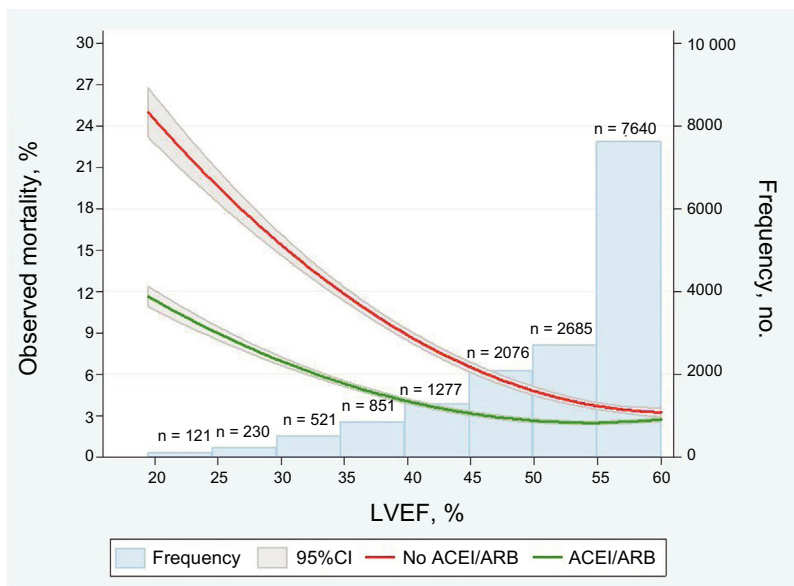


Figure 2. Unadjusted impact of ACEI or ARB at discharge on mortality reduction according to LVEF. 95%CI, 95% confidence interval; ACEI, angiotensin-converting enzyme inhibitors; ARB, angiotensin receptor blockers; LVEF, left ventricular ejection fraction.

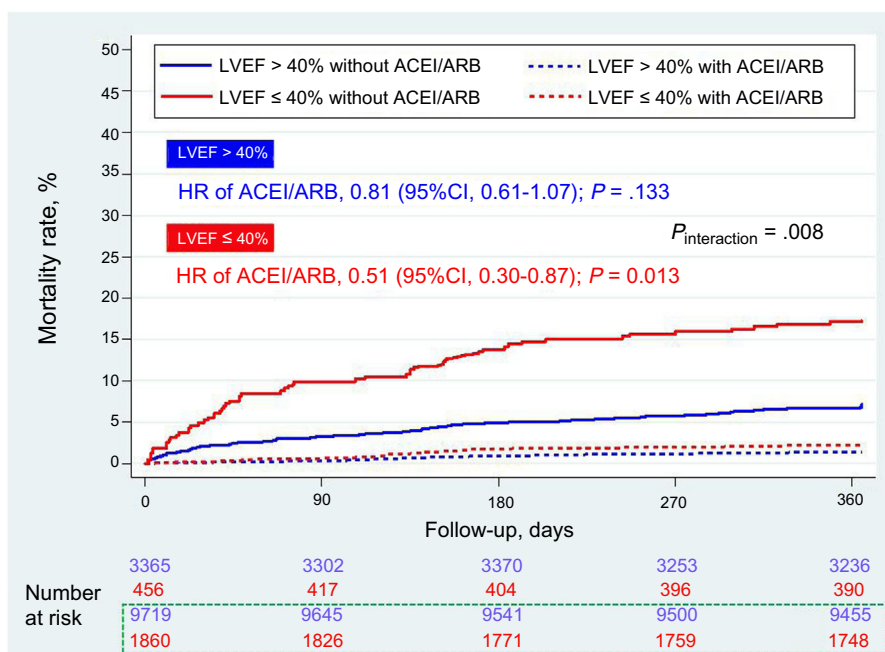


Figure 3. Adjusted survival Kaplan-Meier curves for the prescription of ACEI or ARB at discharge according to LVEF (left ventricular ejection fraction > 40% or ≤ 40%). 95%CI, 95% confidence interval; ACEI, angiotensin-converting enzyme inhibitors; ARB, angiotensin receptor blockers; LVEF, left ventricular ejection fraction. Numbers at risk. In blue patients with left ventricular ejection fraction > 40%, and in red patients with LVEF ≤ 40%. In the box with green dashed line, patients treated with ACEI/ARB.

NSTEACS). Of the total number of patients with LVEF > 40%, 1678 (12.8%) had a history of HF—defined as prior admission for HF, and/or Killip class > I at ACS admission, and/or de novo HF during ACS hospitalization—, 1991 (15.2%) had renal failure, defined as estimated glomerular filtrate rate by isotope dilution mass spectrometry (IDMS)—traceable Modification of the Diet in Renal Disease (MDRD) formula < 60 mL/min/1.73 m² at admission—, 3011 (20.0%) had DM, and 7627 (50.6%) had arterial hypertension. Of the subgroup of patients with LVEF > 40%, 9215 patients (61.1%) had at least 1 of these high-risk conditions. In this high-risk group, treatment with ACEI/ARB showed a trend to lower 1-year mortality (HR, 0.76; 95%CI, 0.55-1.05; *P* = .092) in comparison with the nonhigh-risk group (Figure 4B). However, the interaction *P* value for treatment-by-risk conditions was not significant (0.238), indicating that there are no differences in the clinical effect of ACEI/ARB in patients with LVEF > 40% by the presence or absence of high-risk conditions. The adjusted Kaplan-Meier curves for each high-risk condition are shown in Figures 11-14 of the supplementary data, together with the case-complete analysis (Tables 14-16 and Figures 5-10 of the supplementary data).

DISCUSSION

In this study, based on a large international registry of ACS patients undergoing PCI and treated according to current recommendations of ACS guidelines, we found a significant association of ACEI/ARB therapy with lower 1-year mortality. This association was centered on patients with LVEF ≤ 40% and with STEMI. ACEI/ARB also showed a trend to be associated with lower 1-year mortality in patients with HF, renal failure, DM, or hypertension. In NSTEMI patients without these high-risk conditions, we found no association of ACEI/ARB with lower death rate.

The benefit of ACEI/ARB in the setting of ACS has been probed in the thrombolysis era, with several favorable clinical trials^{3,5,7} and meta-analyses.¹⁸ However, there are 2 clinical trials, CONSENSUS

II⁶ and CCS-1⁴, with a thrombolysis rate of > 50%, that have not demonstrated a significant reduction in mortality at 6 months and 4 weeks, respectively, even in anterior infarction. In the current PCI era, there are several observational studies, with controversial results.^{13-16,19-22} A possible explanation for these discordant results lies in the different baseline characteristics of the ACS populations (eg, percentage of patients with LVEF ≤ 40%, HF, type of ACS, DM, hypertension, chronic kidney disease), together with the differences in invasive (PCI rate) and medical (DAPT, beta-blockers, and statin use) management. In this regard, Gunnell et al.²⁰ found no benefit in long-term mortality reduction by adding ACEI/ARB to medical therapy with beta-blockers and statins after an acute myocardial infarction treated with PCI. In our population, with all patients treated with PCI, and high rates of DAPT (> 90%), beta-blocker (> 80%), and statins (> 90%), we found a strong association of ACEI/ARB with lower 1-year mortality. However, our results differed according to LVEF. In patients with LVEF ≤ 40%, we found a substantial reduction in 1-year mortality with ACEI/ARB but not in patients with LVEF > 40%.

In ACS guidelines, ACEI/ARB are considered mandatory therapy in patients with LVEF ≤ 40%, with a class I recommendation and level of evidence A, unless contraindicated.^{1,2} This recommendation is based on 2 randomized clinical trials with postmyocardial infarction patients—the SAVE and TRACE trials^{8,9}—with 2231 and 1749 patients with reduced LVEF (≤ 40% for SAVE and ≤ 35% for TRACE trial) randomized to captopril or trandolapril vs placebo, respectively. The reduction in the relative risk of death was 19% in the SAVE trial (average of follow-up 42 months) and 22% in the TRACE trial (average follow-up 37 months), and these results are similar to those of HF trials with ACEI/ARB and reduced LVEF, such as the SOLVD and CHARM trials.^{11,12} However, in both trials, the percentage of patients treated with antiplatelet therapy was < 60% and that treated with beta-blockers was < 40%; there were no data about statin prescription, and only < 20% of patients underwent PCI. Our results extrapolate the benefit found in these 2 trials from the thrombolysis era to the contemporary PCI era, in a population treated according to current recommendations.

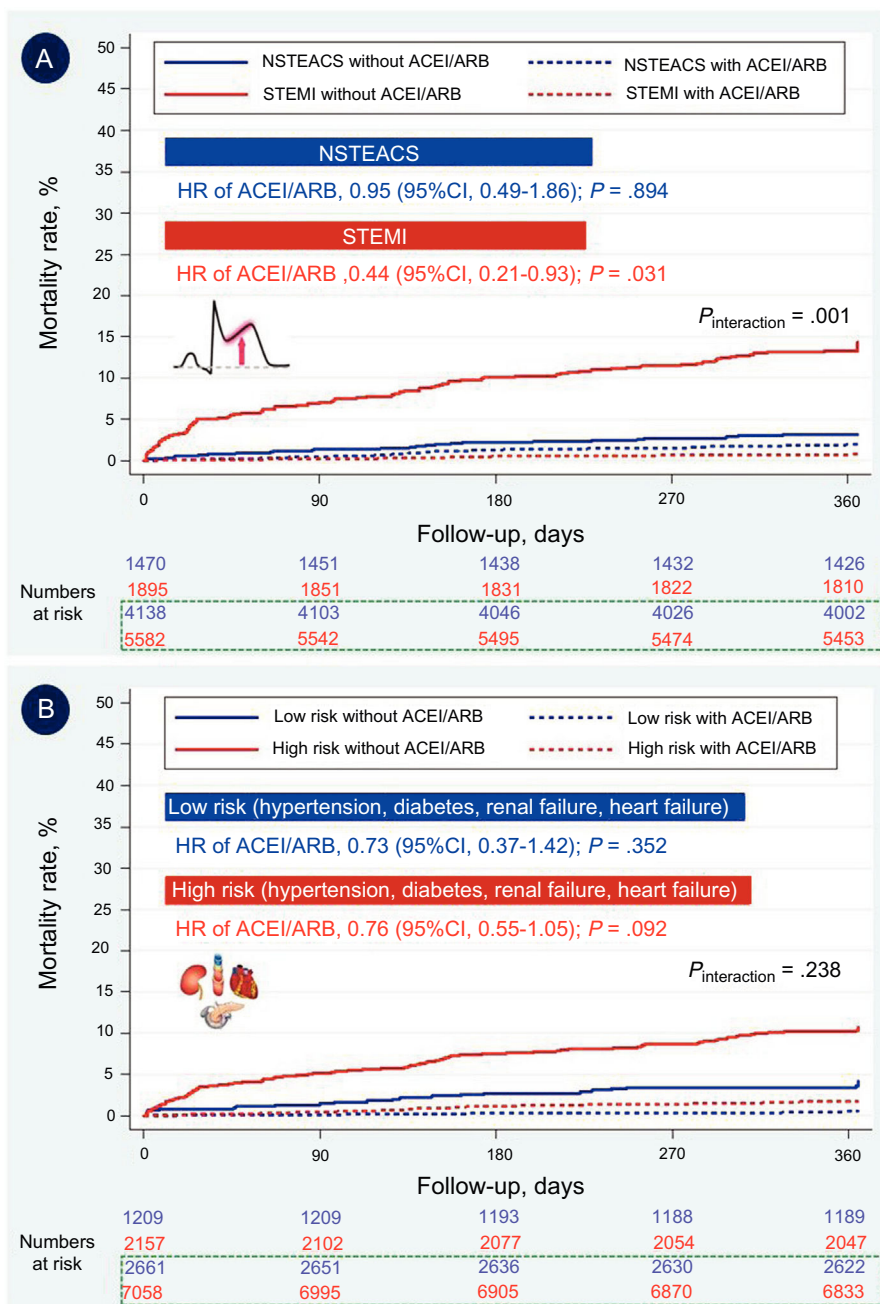


Figure 4. Adjusted survival Kaplan-Meier curves for the prescription of ACEI or ARB at discharge in patients with LVEF > 40%, according to: A) presence of STEMI or NSTEMACS; B) high-risk conditions (heart failure, renal failure, diabetes mellitus, hypertension). 95%CI, 95% confidence interval; ACEI, angiotensin-converting enzyme inhibitors; ARB, angiotensin receptor blockers; HR, hazard ratio; LVEF, left ventricular ejection fraction; NSTEMACS, non-ST-segment elevation acute coronary syndrome; STEMI, ST-segment elevation myocardial infarction.

In patients with LVEF > 40%, we found no overall or consistent benefit of ACEI/ARB. Although most of the adjusted analyses were not significant in those patients, the instrumental variable analysis showed a benefit of ACEI/ARB. This suggests that, in post-ACS patients with LVEF > 40%, it is not clear whether ACEI/ARB have a prognostic benefit in reducing mortality or not. Given the heterogeneity of this group of patients, prescription should be individualized according to each patient's characteristics. When we analyzed subgroups in patients with post-ACS LVEF > 40%, we observed a significant reduction in 1-year death risk only in STEMI patients, and a trend to lower mortality with ACEI/ARB in high-risk patients (with HF, renal failure, DM, or hypertension). To the best of our knowledge, there are no large specific studies that analyze

the role of ACEI/ARB in ACS patients with LVEF > 40%, beyond a contemporary small study.¹⁶ Parashar et al.¹⁶ analyzed the prognostic impact of ACEI/ARB in AMI patients with LVEF > 40% treated with PCI and glomerular filtration rate > 60 mL/min/1.73 m². These authors found no benefit in long-term mortality by using ACEI/ARB in patients undergoing primary PCI. In the setting of stable coronary artery disease with preserved LVEF, there are 3 well-powered clinical trials with contradictory results.^{23–25} The HOPE study showed a significant reduction in the 5-year death rate with ramipril.²⁵ Similar results were reported for the EUROPA trial with perindopril at 4 years.²³ In the PEACE trial,²⁴ 8290 patients with stable coronary artery disease and normal or near-normal LVEF were randomly assigned to receive trandolapril or placebo.

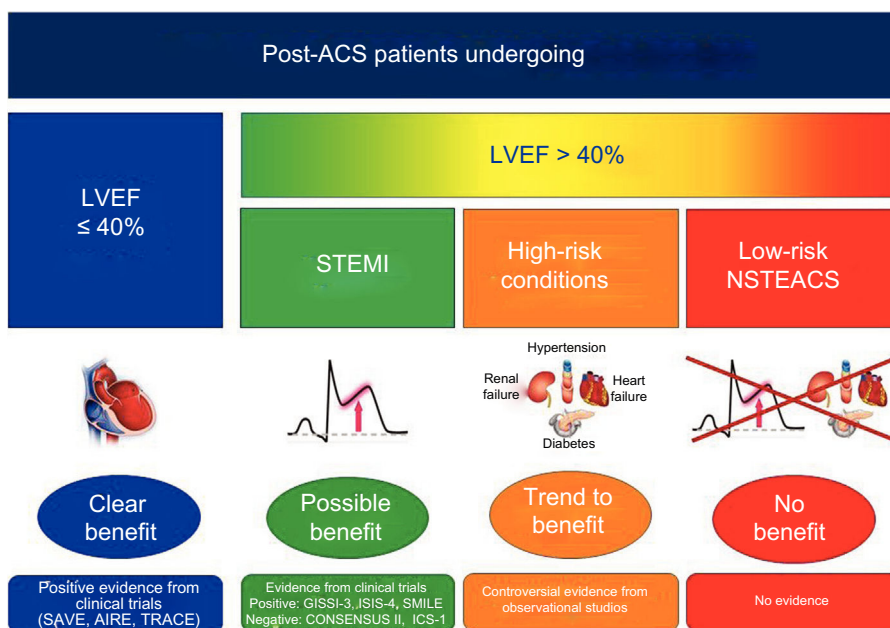


Figure 5. Evidence of ACEI or ARB after ACS in patients who underwent percutaneous coronary intervention. ACEI, angiotensin-converting enzyme inhibitors; ACS, acute coronary syndrome; ARB, angiotensin receptor blockers; LVEF, left ventricular ejection fraction; NSTEMACS, non-ST-segment elevation acute coronary syndrome; STEMI, ST-segment elevation myocardial infarction.

ACEI therapy was not associated with a lower death rate at 4.8 years. To interpret the predominantly negative findings of this study in the context of the positive reports from both HOPE and EUROPA, it is useful to compare the patient characteristics and the event rates in those 2 trials with those in the PEACE trial. At baseline, the patients in the PEACE trial had an average LVEF of 58%, and their average creatinine and cholesterol concentrations were normal.²⁴ Their average blood pressure at baseline was 133/78 mmHg, which was the level achieved with use of an ACE inhibitor in both HOPE and EUROPA.^{23,25} The patients in the PEACE trial also received more intensive risk factor management than did those in HOPE and EUROPA. At baseline, 70% of the patients (compared with 29% in HOPE and 56% in EUROPA) were receiving lipid-lowering therapy. Moreover, 72% of the patients in the PEACE trial, compared with 54% in EUROPA and 40% in HOPE, had undergone coronary revascularization before enrollment.^{23–25} It seems reasonable that this more aggressive strategy might have contributed to the lower risk of adverse events in the PEACE trial. Therefore, it is not surprising that with more intensive treatment of coronary artery disease and risk factor modification, adverse cardiovascular outcomes in patients assigned to placebo were substantially lower in PEACE than they were in the other 2 trials.

European ACS guidelines recommend (also as class 1 recommendation and level of evidence) the use of ACEI/ARB—even if LVEF is > 40%—in ACS patients with DM, HF, and hypertension^{1,2}; and American guidelines extended this recommendation to patients with stable chronic kidney disease. The recommendation of ACEI/ARB in STEMI patients is based on 3 clinical trials (GISSI-3 for lisinopril, ISIS-4 for catopril, and SMILE-1 for zofenopril,^{3,5,7} which showed a significant reduction in 6-week mortality (5 weeks in the ISIS-4 trial) with ACEI in patients with AMI (with and without LVEF > 40%). However, in these trials, there was no systematic use of PCI (0% in the SMILE trial, not reported in GISSI-3 or in ISIS-4, with > 70% of thrombolysis in both), with a very low rate of use beta-blockers (< 30%) and statins (< 10%).^{3,5,7} Similar to the PEACE trial, our results do not support the widespread use of ACEI/ARB in ACS patients with LVEF > 40%. However, we have specifically reported a benefit in STEMI patients with LVEF > 40%,

and a possible benefit in high-risk patients with LVEF > 40%. In low-risk patients with NSTEMACS and LVEF > 40%, we found no benefit of ACEI/ARB in reducing 1-year mortality. Nevertheless, most physicians worldwide continue to prescribe ACEI/ARB in all patients after ACS, often because of a tendency to therapeutic optimism. Based on our results and the controversial prior studies, we believe that patients with post-ACS LVEF ≥ 40% without high-risk conditions (no STEMI, no HF, no DM, no hypertension, no kidney disease) represent an interesting clinical scenario for the performance of a randomized clinical trial according to the current recommendations in ACS management (Figure 5).

Limitations

This study has some limitations. First, only patients who survived hospital stay were studied and, consequently, we did not investigate the role of in-hospital ACEI/ARB. Several investigators in the thrombolysis era have shown that the benefit of ACEI/ARB occurs during the first few days after ACS, suggesting that mechanisms other than benefits on the remodeling process may play a role.^{3,5,7} Second, the survival benefits of ACEI/ARB were compared based on medications at discharge. In addition, the prescription dose, long-term adherence, discontinuation, incidence of adverse events, and drug information after discharge were not available in the present study. Moreover, we do not have data about prior use of ACEI/ARB before hospital admission. Third, we did not differentiate between ACEI and ARB. Although several authors have shown that both ACEI and ARB show an equal benefit, other authors have reported marked differences between the 2 drugs,^{26,27} showing different long-term tolerance and adherence.²⁸ Fourth, our study included a selected and nonrandomized sample; in addition, although propensity scoring and instrumental variable analysis were adjusted for confounding by indication, and further adjustments were made for many additional confounders in the survival models, residual confounding is probable.

CONCLUSIONS

The benefit of ACEI/ARB in post-ACS patients is centered on those with LVEF \leq 40% and STEMI. In NSTEMI patients with LVEF $>$ 40%, further contemporary studies are needed to assess the long-term impact of ACEI or ARB in the modern PCI era in addition to other guideline-recommended cardiovascular drugs.

CONFLICTS OF INTEREST

None declared.

WHAT IS KNOWN ABOUT THE TOPIC?

- ACEI and ARB have shown a benefit in reducing mortality after an ACS in patients with LVEF \leq 40%. However, the benefit of these 2 therapies in ACS patients with LVEF $>$ 40% who have undergone percutaneous coronary revascularization has not been tested in clinical trials. Nevertheless, they are still recommended by clinical practice guidelines for patients with hypertension, diabetes, or renal dysfunction.

WHAT DOES THIS STUDY ADD?

- After an ACS treated with percutaneous coronary intervention, ACEI/ARB reduced mortality in patients with LVEF \leq 40%.
- In ACS patients with LVEF $>$ 40%, the benefit of ACEI was limited to STEMI patients.
- In NSTEMI with LVEF $>$ 40%, ACEI/ARB could be beneficial in patients with hypertension, diabetes, chronic kidney diseases, or HF.
- Further contemporary studies are needed to assess the long-term impact of ACEI and ARB in the modern era of percutaneous coronary revascularization.

APPENDIX. SUPPLEMENTARY DATA

Supplementary data associated with this article can be found in the online version, at <https://doi.org/10.1016/j.rec.2019.02.012>.

REFERENCES

- Ibanez B, James S, Agewall S, et al. 2017 ESC Guidelines for the management of acute myocardial infarction in patients presenting with ST-segment elevation: The Task Force for the management of acute myocardial infarction in patients presenting with ST-segment elevation of the European Society of Cardiology (ESC). *Eur Heart J*. 2018;39:119–177.
- Roffi M, Patrono C, Collet JP, et al. 2015 ESC Guidelines for the management of acute coronary syndromes in patients presenting without persistent ST-segment elevation: Task Force for the Management of Acute Coronary Syndromes in Patients Presenting without Persistent ST-Segment Elevation of the European Society of Cardiology (ESC). *Eur Heart J*. 2016;37:267–315.
- Gruppo Italiano per lo Studio della Sopravvivenza nell'infarto Miocardico. GISSI-3: effects of lisinopril and transdermal glyceryl trinitrate singly and together on 6-week mortality and ventricular function after acute myocardial infarction. *Lancet*. 1994;343:1115–1122.
- Liu L, Wang W, Pan X, et al. Oral captopril versus placebo among 13,634 patients with suspected acute myocardial infarction: interim report from the Chinese Cardiac Study (CCS-1). *Lancet*. 1995;345:686–687.
- Ambrosioni E, Borghi C, Magnani B. The effect of the angiotensin-converting-enzyme inhibitor zofenopril on mortality and morbidity after anterior myocardial infarction. The Survival of Myocardial Infarction Long-Term Evaluation (SMILE) Study Investigators. *N Engl J Med*. 1995;332:80–85.
- Swedberg K, Held P, Kjekshus J, Rasmussen K, Ryden L, Wedel H. Effects of the early administration of enalapril on mortality in patients with acute myocardial infarction. Results of the Cooperative New Scandinavian Enalapril Survival Study II (CONSENSUS II). *N Engl J Med*. 1992;327:678–684.
- Collins R, Peto R, Flather M, et al. ISIS-4 (Fourth International Study of Infarct Survival) Collaborative Group. ISIS-4: a randomised factorial trial assessing early oral captopril, oral mononitrate, and intravenous magnesium sulphate in 58,050 patients with suspected acute myocardial infarction. *Lancet*. 1995;345:669–685.
- Trandolapril Cardiac Evaluation (TRACE) Study Group/Kober L, Torp-Pedersen C, Carlsen JE, et al. A clinical trial of the angiotensin-converting-enzyme inhibitor trandolapril in patients with left ventricular dysfunction after myocardial infarction. *N Engl J Med*. 1995;333:1670–1676.
- Pfeffer MA, Braunwald E, Moye LA, et al. Effect of captopril on mortality and morbidity in patients with left ventricular dysfunction after myocardial infarction. Results of the survival and ventricular enlargement trial. The SAVE Investigators. *N Engl J Med*. 1992;327:669–677.
- Effect of ramipril on mortality and morbidity of survivors of acute myocardial infarction with clinical evidence of heart failure. The Acute Infarction Ramipril Efficacy (AIRE) Study Investigators. *Lancet*. 1993;342:821–828.
- Granger CB, McMurray JJ, Yusuf S, et al. Effects of candesartan in patients with chronic heart failure and reduced left-ventricular systolic function intolerant to angiotensin-converting-enzyme inhibitors: the CHARM-Alternative trial. *Lancet*. 2003;362:772–776.
- Investigators SOLVDL, Yusuf S, Pitt B, Davis CE, Hood WB, Cohn JN. Effect of enalapril on survival in patients with reduced left ventricular ejection fractions and congestive heart failure. *N Engl J Med*. 1991;325:293–302.
- Amann U, Kirchberger I, Heier M, et al. Effect of renin-angiotensin system inhibitors on long-term survival in patients treated with beta blockers and antiplatelet agents after acute myocardial infarction (from the MONICA/KORA Myocardial Infarction Registry). *Am J Cardiol*. 2014;114:329–335.
- González-Cambeiro MC, López-López A, Abu-Assi E, et al. Mortality benefit of long-term angiotensin-converting enzyme inhibitors or angiotensin receptor blockers after successful percutaneous coronary intervention in non-ST elevation acute myocardial infarction. *Rev Port Cardiol*. 2016;35:645–653.
- Milonas C, Jernberg T, Lindback J, Agewall S, Wallentin L, Steneström U. Effect of Angiotensin-converting enzyme inhibition on one-year mortality and frequency of repeat acute myocardial infarction in patients with acute myocardial infarction. *Am J Cardiol*. 2010;105:1229–1234.
- Parashar A, Agarwal S, Krishnaswamy A, et al. Renin-Angiotensin System Antagonists in Patients Without Left Ventricular Dysfunction After Percutaneous Intervention for ST-Segment Elevation Myocardial Infarction. *Am J Cardiol*. 2015;116:508–514.
- Raposeiras-Roubín S, Faxen J, Iniguez-Romo A, et al. Development and external validation of a post-discharge bleeding risk score in patients with acute coronary syndrome: The BleMACS score. *Int J Cardiol*. 2018;254:10–15.
- ACE Inhibitor Myocardial Infarction Collaborative Group. Indications for ACE inhibitors in the early treatment of acute myocardial infarction: systematic overview of individual data from 100,000 patients in randomized trials. ACE Inhibitor Myocardial Infarction Collaborative Group. *Circulation*. 1998;97:2202–2212.
- Nishino T, Furukawa Y, Kaji S, et al. Distinct survival benefits of angiotensin-converting enzyme inhibitors/angiotensin II receptor blockers in revascularized coronary artery disease patients according to history of myocardial infarction. *Circ J*. 2013;77:1242–1252.
- Gunnell AS, Einarsdóttir K, Sanfilippo F, Liew D, Holman CD, Briffa T. Improved long-term survival in patients on combination therapies following an incident acute myocardial infarction: a longitudinal population-based study. *Heart*. 2013;99:1353–1358.
- Evans M, Carrero JJ, Szummer K, et al. Angiotensin-Converting Enzyme Inhibitors and Angiotensin Receptor Blockers in Myocardial Infarction Patients With Renal Dysfunction. *J Am Coll Cardiol*. 2016;67:1687–1697.
- Batra G, Lindhagen L, Andell P, et al. Angiotensin-Converting Enzyme Inhibitors and Angiotensin Receptor Blockers Are Associated With Improved Outcome but Do Not Prevent New-Onset Atrial Fibrillation After Acute Myocardial Infarction. *J Am Heart Assoc*. 2017. <http://dx.doi.org/10.1161/JAHA.116.005165>.
- Fox KM. Efficacy of perindopril in reduction of cardiovascular events among patients with stable coronary artery disease: randomised, double-blind, placebo-controlled, multicentre trial (the EUROPA study). *Lancet*. 2003;362:782–788.
- Braunwald E, Domanski MJ, Fowler SE, et al. Angiotensin-converting-enzyme inhibition in stable coronary artery disease. *N Engl J Med*. 2004;351:2058–2068.
- Yusuf S, Sleight P, Pogue J, Bosch J, Davies R, Dagenais G. Effects of an angiotensin-converting-enzyme inhibitor, ramipril, on cardiovascular events in high-risk patients. *N Engl J Med*. 2000;342:145–153.
- Choi SY, Choi BG, Rha SW, et al. Angiotensin-converting enzyme inhibitors versus angiotensin receptor blockers in acute ST-segment elevation myocardial infarction patients with diabetes mellitus undergoing percutaneous coronary intervention. *Int J Cardiol*. 2017;249:48–54.
- Cheng J, Zhang W, Zhang X, et al. Effect of angiotensin-converting enzyme inhibitors and angiotensin receptor blockers on all-cause mortality, cardiovascular deaths, and cardiovascular events in patients with diabetes mellitus. *JAMA Intern Med*. 2014;174:773–785.
- Messerli FH, Bangalore S, Bavishi C, Rimoldi SF. Angiotensin-Converting Enzyme Inhibitors in Hypertension: To Use or Not to Use? *J Am Coll Cardiol*. 2018;71:1474–1482.