

## Original article

## Interleukin-5 levels are decreased in the plasma of coronary artery disease patients and inhibit Th1 and Th17 differentiation in vitro

Di Ye,<sup>a,b,c,◇</sup> Zhen Wang,<sup>a,b,c,◇</sup> Jing Ye,<sup>a,b,c,◇</sup> Menglong Wang,<sup>a,b,c,◇</sup> Jianfang Liu,<sup>a,b,c</sup> Yao Xu,<sup>a,b,c</sup> Huimin Jiang,<sup>a,b,c</sup> Jiangbin Chen,<sup>a,b,c</sup> and Jun Wan<sup>a,b,c,\*</sup><sup>a</sup> Department of Cardiology, Renmin Hospital of Wuhan University, Wuhan, China<sup>b</sup> Cardiovascular Research Institute, Wuhan University, Wuhan, China<sup>c</sup> Hubei Key Laboratory of Cardiology, Wuhan, China

## Article history:

Received 5 January 2019

Accepted 12 July 2019

Available online 6 September 2019

## Keywords:

Coronary artery disease

Inflammation

Interleukin-5

Th1 differentiation

Th17 differentiation

Regulatory T cell

## ABSTRACT

**Introduction and objectives:** Interleukin (IL)-5 is an anti-inflammatory cytokine that has been demonstrated to be involved in cardiovascular diseases, including aortic aneurysm and heart failure. This study aimed to investigate the involvement of IL-5 in coronary artery disease (CAD) and the possible mechanisms.

**Methods:** We analyzed IL-5 expression in human coronary artery specimens collected from CAD patients and deceased donors. Plasma IL-5, IL-17, and interferon- $\gamma$  levels in CAD patients were detected using ELISA kits, with samples from chest pain patients (non-CAD) as controls. Mouse CD4<sup>+</sup>T helper (Th) cells were separated, and the effect of IL-5 on Th1, regulatory T cell and Th17 differentiation and mRNA levels of their characteristic cytokines were detected using flow cytometry and reverse transcription-quantitative polymerase chain reaction, respectively.

**Results:** IL-5 was significantly decreased in the coronary plaque of CAD patients compared with the deceased donors group, and IL-5 was mainly derived from macrophages in the coronary artery plaque. Compared with the non-CAD group, plasma IL-5 levels in the CAD groups were significantly lower, and the sequence from high to low was stable angina pectoris, unstable angina pectoris, and acute myocardial infarction. Binary linear regression analysis showed that IL-5 was independently correlated with the occurrence of CAD. Recombinant mouse IL-5 treatment decreased Th1 and Th17 levels and mRNA expression of their characteristic cytokines in oxidized low-density lipoprotein-treated CD4<sup>+</sup>Th cells.

**Conclusion:** IL-5 levels were decreased in CAD patients and inhibited oxidized low-density lipoprotein Th1 and Th17 differentiation in vitro.

© 2019 Sociedad Española de Cardiología. Published by Elsevier España, S.L.U. All rights reserved.

Los niveles de interleucina-5 disminuyen en plasma de pacientes con enfermedad coronaria e inhiben la diferenciación *in vitro* de Th1 y Th17

## RESUMEN

**Introducción y objetivos:** La interleucina 5 (IL-5) es una citocina antiinflamatoria que se ha involucrado en las enfermedades cardiovasculares, incluidos los aneurismas aórticos y la insuficiencia cardíaca. El objetivo de este estudio es investigar el papel de la IL-5 en la enfermedad coronaria (EC) y sus posibles mecanismos.

**Métodos:** Se analizó la expresión de la IL-5 en muestras de arterias coronarias humanas de 17 pacientes con EC y donantes fallecidos. Además, se determinaron las concentraciones plasmáticas de IL-5, IL-17 e interferón gamma en pacientes con EC usando kits ELISA con muestras de pacientes con dolor torácico (sin EC) como controles. Se separaron las células murinas CD4<sup>+</sup>T helper (Th), y el efecto de la IL-5 en la diferenciación de Th1, célula T reguladora y Th17 y la cantidad de ARNm de sus citocinas características se determinaron mediante citometría de flujo y reacción en cadena de la polimerasa tras transcripción inversa respectivamente.

**Resultados:** La IL-5 disminuyó significativamente en las placas coronarias de los pacientes con EC comparados con el grupo de donantes fallecidos, y la IL-5 derivó fundamentalmente de los macrófagos de las placas de las arterias coronarias. Además, comparados con el grupo sin EC, las concentraciones plasmáticas de IL-5 en el grupo de EC fueron significativamente menores, y la secuencia de mayor a

## Palabras clave:

Enfermedad coronaria

Inflamación

Interleucina 5

Diferenciación de Th1

Diferenciación de Th17

Célula T reguladora

\* Corresponding author: Department of Cardiology, Renmin Hospital of Wuhan University, Cardiovascular Research Institute, 238 Jiefang Road, Wuhan 430060, China.

E-mail address: wanjun@whu.edu.cn (J. Wan).

◇ These authors contributed equally to this work.

menor fue angina estable, angina inestable e infarto de miocardio. El análisis de regresión lineal binaria mostró que la IL-5 se correlacionó independientemente con la aparición de la EC. Además, el tratamiento con IL-5 recombinante de ratón disminuyó los valores de Th1 y Th17 y la expresión del ARNm de sus citocinas características en lipoproteínas oxidadas de baja densidad tratadas con CD4<sup>+</sup>Th.

**Conclusiones:** Los valores de IL-5 disminuyeron en los pacientes con EC e inhiben la diferenciación *in vitro* de Th1 y Th17 inducida por lipoproteínas oxidadas de baja densidad.

© 2019 Sociedad Española de Cardiología. Publicado por Elsevier España, S.L.U. Todos los derechos reservados.

### Abbreviations

AMI: acute myocardial infarction

CAD: coronary artery disease

IL-5: Interleukin 5

SAP: stable angina pectoris

UAP: unstable angina pectoris

## INTRODUCTION

Coronary artery disease (CAD) is a common but severe cardiovascular disease and is the leading cause of morbidity and mortality worldwide. CAD is the further development of atherosclerosis, and its main pathological process is the activation of inflammatory reactions and the coagulation system.<sup>1</sup> A variety of inflammatory cells and cytokines contribute to the thinning of the fibrous cap and enlargement of the lipid core, thus promoting the formation and rupture of vulnerable plaques.<sup>2</sup>

Interleukins (IL) are inflammatory-related cytokines that play critical roles in the formation of atherosclerosis/CAD. IL-1 exerts inflammatory effects on macrophages, endothelial cells and vascular smooth muscle cells, whereas gene deletion of IL-1 $\beta$  or IL-1R decreases atherosclerotic lesion development.<sup>3</sup> Additionally, IL-6 is independently associated with the prevalence and severity of coronary atherosclerosis.<sup>4</sup> Moreover, IL-18 can increase lesion development through the enhancement of an inflammatory response involving interferon (IFN)- $\gamma$ -dependent mechanism,<sup>5</sup> whereas IL-10 is defined as a protective factor in both atherosclerotic lesion formation and stabilization.<sup>6</sup>

IL-5 is an anti-inflammatory cytokine mainly secreted by inflammatory cells, including T lymphocytes, mast cells, macrophages, and eosinophils.<sup>7,8</sup> IL-5 is widely known as a major factor in eosinophil growth, maturation and release from bone marrow. It has been noted that eosinophil counts were significantly increased in patients with vasospastic angina pectoris or CAD and the absolute number returned to normal after treatment.<sup>9,10</sup> IL-5 could prolong eosinophil survival and plays critical roles in orchestrating and amplifying allergic response in asthma and hypereosinophilic syndrome.<sup>11</sup> Moreover, Zhang et al.<sup>12</sup> found that excessive IL-5 production could heighten the risk of subsequent severe respiratory infections in children with an atopic family history. Compared with immunocompetent mice, IL-5(-/-) mice showed less activation of eosinophils in the lungs after parasitic infection.<sup>13</sup> Studies have demonstrated that IL-5 levels are elevated in patients with nonsmall cell lung cancer,<sup>14</sup> and IL-5 also plays a role in the antiretroviral therapy of AIDS.<sup>15</sup>

IL-5 was also demonstrated to be involved in cardiovascular diseases. Liu et al.<sup>16</sup> found that in allergic lung inflammation, plasma IL-5, IL-13 and transforming growth factor beta levels

dropped, while inflammatory cell and eosinophil accumulation increased; these authors also found that IL-5 and transforming growth factor beta levels were reduced in mice with pre-established abdominal aortic aneurysms. IL-5 was also decreased in patients with chronic heart failure.<sup>17</sup> Interestingly, it has been reported that asthmatic patients are at decreased risk of atherosclerosis, while plasma IL-5 is increased in patients with asthma.<sup>18</sup>

No data are available on IL-5 expression in CAD patients. Therefore, the aim of this study was to prospectively evaluate IL-5 expression in patients with CAD and explore possible mechanisms.

## METHODS

### Collection of human coronary specimens

Coronary artery tissue (n = 10) was collected from the coronary arteries of patients with CAD who underwent heart transplant surgery. The control samples (n = 7) were obtained from deceased donors who had had traffic accidents or strokes and were declared brain-dead by experienced clinicians. Donors had no history of cardiovascular disease, and the samples showed no signs of pathology. All the coronary tissues were collected by surgeons during heart transplant procedures at the People's Hospital of Guangxi Zhuang Autonomous Region (China). Written informed consent was obtained from families, and the study protocol was approved by the Medical Ethics Committee of the People's Hospital of Guangxi Zhuang Autonomous Region.

### Western blot

Coronary samples were lysed, and total protein was collected. After quantification using a bicinchoninic acid (BCA) Protein Assay Kit, 20  $\mu$ g protein were added to 12% sodium dodecyl sulfate polyacrylamide gel electrophoresis (SDS-PAGE) gel. The proteins were separated by electrophoresis and were then transferred to Immobilon-FL PVDF membranes. The membranes were blocked with 5% nonfat milk and incubated with anti-IL-5 antibody (Santa Cruz Biotechnology) and antiglyceraldehyde-3-phosphate dehydrogenase (GAPDH, Cell Signaling Technology) antibody at 4° C overnight, followed by incubation with secondary antibody at room temperature for 1 hour. The proteins were visualized and quantified using a 2-color infrared imaging system (Odyssey; LI-COR Biosciences). Protein expression levels were normalized to the GAPDH control.

### Reverse transcription-quantitative polymerase chain reaction

Total mRNA was collected after coronary tissue and cells were lysed using the TRIzol reagent. Then, complementary DNA (cDNA) was synthesized from 2  $\mu$ g of total mRNA using oligo

**Table 1**

Reverse transcription-quantitative polymerase chain reaction primers used

Gene	Forward primer(5'-3')	Reverse primer (5'-3')
IL-5 (human)	CCCACAAGTGCATTGGTGAA	CCTCAGACTCTCATTGGCTATCAG
IL-17 (human)	CTCTGTGATCTGGGAGGCAAA	CTCTTGCTGGATGGGGACA
IFN- $\gamma$ (human)	GCAGGTCAATCAGATGTAGCGG	TGTTCTTCTTGATGGTCTCCACAC
GAPDH (human)	TTGTCAAGCTCATTTCTGGT	TTACTCCTTGGAGGCCATGTA
IL-17 (mouse)	TCCAGAAGGCCCTCAGACTA	AGCATCTTCTCGACCCCTGAA
IFN- $\gamma$ (mouse)	ACTGGCAAAGGATGGTGAC	TGAGTCATTGAATGCTTGG
TBX21 (mouse)	ATTGGTTGGAGAGGAAGCGG	TGTGCACCTTCAAACCTT
IL-18 (mouse)	ATGCTTTCTGGACTCCTGCC	GTCTGGTCTGGGGTTCCTG
ROR $\gamma$ T (mouse)	CTGTCTGGGCTACCTACT	CCACTTGTCTGTTGCTGC
IL-23 (mouse)	AATAATGTGCCCGTATCCA	CATGGGGTATCAGGGAGTA
GAPDH (mouse)	AACCTTGGCATTTGGAAGG	CACATTGGGGTAGGAACAC

GAPDH, glyceraldehyde-3-phosphate dehydrogenase; IFN- $\gamma$ , interferon- $\gamma$ ; IL, interleukin; ROR $\gamma$ , retinoic acid receptor-related orphan receptor gamma; TBX21, T-box transcription factor.

(dT) primers and a reverse transcription kit according to the manufacturer's instructions. Polymerase chain reaction (PCR) amplifications were performed using a LightCycler 480 SYBR Green Master Mix (all from Roche). The primer sequences are listed in Table 1. The relative mRNA expression levels were measured and were normalized to GAPDH in the corresponding sample.

### Histological analysis

All the coronary samples were fixed with 4% neutral paraformaldehyde, and after being embedded in paraffin, the samples were cut into 5  $\mu$ m slices and mounted onto slides. Immunofluorescence staining was used to detect IL-5 expression in each sample. To determine the source of IL-5, double immunofluorescence staining with the anti-CD4 antibody, anti-CD68 antibody, and anti-IL-5 antibody was performed.

### Collection of human blood samples

We selected a whole new set of consecutive patients with chest pain who were suspected to have CAD at the People's Hospital of Guangxi Zhuang Autonomous Region from June 2016 to December 2017. All patients underwent coronary angiography. According to the clinical symptoms and the results of the coronary arteriogram and electrocardiogram, the patients were divided into 4 groups: a) Non-CAD (NCAD, n = 36) group. Inclusion criteria: chest pain was not accompanied by electrocardiogram changes, coronary stenosis, or coronary spasm when an intracoronary acetylcholine injection was given during coronary angiography; b) SAP group (n = 51). Inclusion criteria: typical exertion-induced chest discomfort associated with down-sloping or a horizontal ST-segment depression > 1 mm in an exercise test; c) UAP group (n = 44). Inclusion criteria: chest pain at rest with definite ischemic electrocardiographic changes: ST-segment changes and/or T-wave inversions, and d) Acute myocardial infarction (AMI, n = 29) group. Inclusion criteria: myocardial infarction confirmed by a significant rise in troponin I and creatine kinase MB levels.

The standard of grouping was based on a previous study by Lin et al.<sup>19</sup> We excluded patients who had had an AMI within the previous 3 months, or unstable angina pectoris within the previous

month.<sup>20</sup> We also excluded patients with evidence of significant concomitant diseases, in particular, hemodynamic valvular heart disease, cardiomyopathy, known malignant diseases, and febrile conditions.<sup>21</sup> The diagnosis was established by the clinicians with extensive clinical experience. Gensini scores were used to assess stenosis in the coronary arteries. The detailed algorithm of Gensini scores has been previously described in by Ye et al.<sup>22</sup>

The patients themselves or their families provided written informed consent, and the study protocol was approved by the Medical Ethics Committee of the People's Hospital of Guangxi Zhuang Autonomous Region.

### Measurement of plasma IL-5, IL-17, and IFN- $\gamma$

Blood samples were obtained upon patient arrival at the emergency unit. Blood samples were collected before coronary angiography was performed and before any treatment was provided. The time of onset for all patients was less than 6 hours. The samples were centrifuged at 4000  $\times$  g for 20 minutes and then the supernatants were collected and stored at -80 $^{\circ}$  C until the beginning of the experiments. The samples were removed from a -80 $^{\circ}$  C environment and then thawed at room temperature. Plasma IL-5 (R&D Systems), IL-17, and IFN- $\gamma$  (both from eBioscience) levels were determined using an enzyme-linked immunosorbent assay (ELISA) kit according to the manufacturer's instructions.

### Cell culture

Male adult C57BL/6 mice were anesthetized with 2% isoflurane, and the spleens were isolated. The splenic single cell suspension was prepared and cultured in RPMI 1640 (Gibco) complete culture medium. The Cluster of Differentiation 4 (CD4 $^{+}$ ) Th cells were positively selected using CD4 magnetic beads (Miltenyi Biotech) and an auto magnetic activated cell sorting separator.<sup>23</sup> After activation by anti-CD3 and anti-CD28 (both from eBioscience), the CD4 $^{+}$ Th cells were treated with oxidized low-density lipoprotein (50  $\mu$ g/mL, Servicebio) or recombinant mouse IL-5 (rIL-5, Genetex). Then the cells were cultured in a humidified CO $_2$  incubator with 5% CO $_2$  at 37 $^{\circ}$  C for 24 hours.<sup>24,25</sup>

## Th1 and Th17 measurement

The CD4<sup>+</sup>Th cells cultured above were collected and stained with FITC (fluorescein isothiocyanate) anti-CD4 (FITC-CD4). After treatment with fixation/permeabilization concentrate, the cells were stained with phycoerythrin (PE)-labeled anti-IFN- $\gamma$  (PE-IFN- $\gamma$ ) and PE-labeled anti-IL-17 (PE-IL-17). The isotype controls were included for compensation and to confirm antibody specificity. Th1 cells were defined as CD4<sup>+</sup>/IFN- $\gamma$ <sup>+</sup>, and Th17 cells were defined as CD4<sup>+</sup>/IL-17<sup>+</sup>. The cell stimulation cocktails and all of the flow cytometry antibodies were purchased from eBioscience and used according to the manufacturer's instructions.

## Statistical analysis

Plasma cytokine concentrations and clinical characteristics are expressed as medians (lower quartile to upper quartile) and were compared with the Mann-Whitney U test. The correlations between IL-17, IFN- $\gamma$ , clinical characteristics and IL-5 were analyzed using the Spearman correlation analysis. Simple linear regression analysis and subsequent binary linear regression analysis were used to determine whether IL-5 was an independent biomarker of CAD. The data from cell culture are expressed as mean  $\pm$  standard deviation and were compared with Student *t* tests. All data were analyzed with SPSS 23.0 software, and *P* < .05 was considered statistically significant.

## RESULTS

### Clinical characteristics of patients providing coronary tissue samples

Among the patients who provided coronary tissue, levels of cardiac troponin I (cTnI) and C-reactive protein (CRP) were significantly higher in the CAD groups than in the deceased donor group. No differences were found between the groups in other clinical characteristics, including age, sex, smoking, drinking, systolic blood pressure (SBP), fasting glucose (Glu), total

cholesterol (TC), triglycerides (TG), low-density lipoprotein (LDL), high-density lipoprotein (HDL), and diastolic blood pressure (DBP). Clinical data are listed in Table 2.

### Expression and source of IL-5 in human coronary tissue

IL-5 was significantly lower in the coronary plaque of CAD patients than in that of deceased donors (Figure 1A-B). Both CD4<sup>+</sup>Th cells and macrophages were the source of IL-5, of which the macrophages were the main source (Figure 1C-D).

### Clinical characteristics of patients providing blood samples

Levels of Glu, TC, SBP, LDL, CRP and cTnI were significantly lower in the NCAD group than in the other 3 groups. Other clinical characteristics, including age, sex, smoking and drinking, TG, HDL, and DBP, showed no obvious differences. None of the clinical characteristics was obviously different between SAP, UAP and AMI groups except SBP and cTnI. SBP and cTnI levels were highest in the AMI group, higher than in the UAP group, and were lowest in the SAP. Clinical data are listed in Table 3.

### Association between plasma cytokine levels and Gensini scores

The results of ELISA showed that IL-5 levels were gradually decreased in the NCAD, SAP, and UAP groups, whereas no differences were found between the UAP and AMI groups (Figure 2A). Both IL-17 and IFN- $\gamma$  levels gradually increased in the NCAD, SAP, UAP and AMI groups (Figure 2B-C). Spearman correlation analysis showed that IL-5 levels were negatively correlated with IL-17 levels and IFN- $\gamma$  levels in CAD patients (Figure 2D-E). In addition, IL-17 levels were positively correlated with IFN- $\gamma$  levels (Figure 2F).

The correlation between IL-5, IL-17, IFN- $\gamma$  levels and Gensini scores was detected to further determine whether the 3 cytokines are associated with the severity of CAD. The results showed that the Gensini score was positively correlated with IL-17 and IFN- $\gamma$  levels but was negatively correlated with IL-5 (Figure 2G-I).

**Table 2**  
Clinical characteristics in coronary tissue sample donors

Characteristic	Deceased donors	CAD	<i>P</i>
Sex, M/F	4/3	7/3	.585
Age, y	57 [50-62]	57 [50-69]	.732
Smoking <sup>a</sup>	1/6	4/6	.252
Drinking <sup>b</sup>	2/5	4/6	.628
Glu, mmol/L	5.3 [4.74-5.41]	5.60 [5.03-7.65]	.475
TG, mmol/L	1.38 [0.88-1.54]	2.29 [1.10-3.08]	.157
TC, mmol/L	4.18 [3.16-4.48]	4.03 [3.55-5.75]	.669
HDL, mmol/L	1.28 [0.91-1.59]	1.02 [0.77-1.21]	.161
LDL, mmol/L	1.89 [1.17-2.01]	2.33 [1.34-3.92]	.417
SBP, mmHg	111 [103-125]	121 [109-131]	.435
DBP, mmHg	85 [74-86]	84 [79-94]	.378
CRP, mg/L	0.41 [0.07-1.08]	7.18 [2.40-36.91]	.002
cTnI, ng/mL	0.024 [0.006-0.053]	0.55 [0.16-0.79]	.002

CAD, coronary artery disease; CRP, C-reactive protein; cTnI, cardiac troponin I; DBP, diastolic blood pressure; F, female; Glu, fasting glucose; HDL, high-density lipoprotein; LDL, low-density lipoprotein; M, male; SBP, systolic blood pressure; TC, total cholesterol; TG, total triglycerides.

Data are expressed as proportions or median [interquartile range].

<sup>a</sup> At least 1 cigarette per day for more than 6 months.

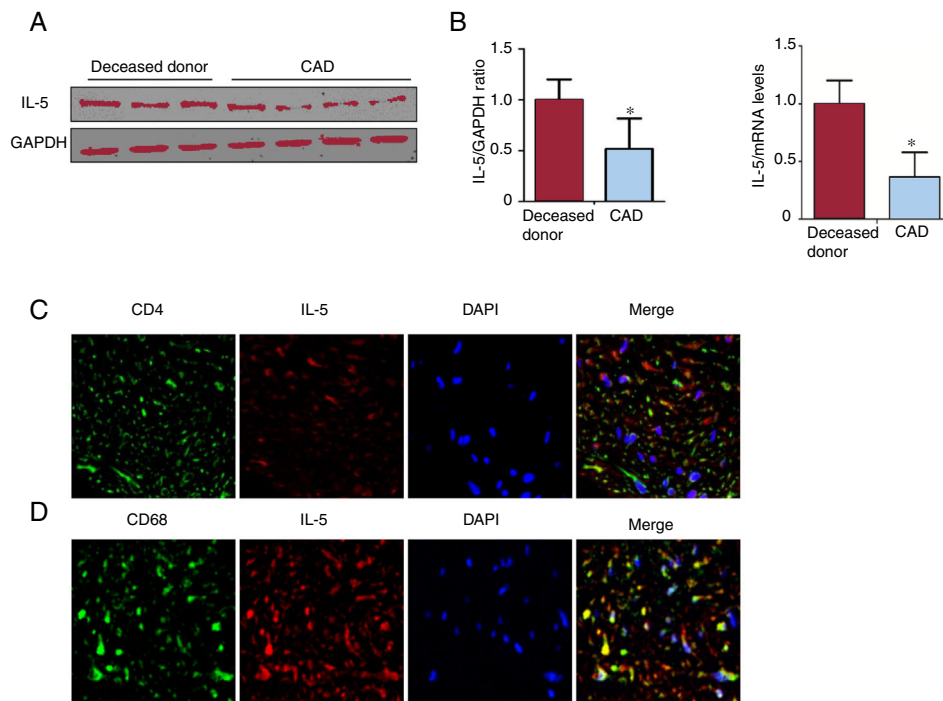
<sup>b</sup> Any type of alcoholic beverage at least once a week for more than 6 months.

### Simple and binary linear regression analyses

The results of the simple linear regression analysis showed that IL-5, IL-17, IFN- $\gamma$ , cTnI, TC, LDL, and Glu exhibited a trend toward a correlation with the prevalence of CAD (*P* < .05). Then, the 3 cytokines and 4 clinical characteristics were analyzed by binary linear regression analysis, and the results showed that IL-5 ( $\beta$  = -0.273, 95%CI, -0.455 to -0.091; *P* = .003), IL-17 ( $\beta$  = 0.228, 95%CI, 0.068 to 0.388; *P* = .006) and IFN- $\gamma$  ( $\beta$  = 0.232, 95%CI, 0.081 to 0.382; *P* = .003) were associated with the presence of CAD (as shown in Table 4).

### Effect of IL-5 on CD4<sup>+</sup>Th cell differentiation

The results of flow cytometry analysis showed that oxidized low-density lipoprotein treatment significantly increased both Th1 and Th17 percentages, while regulatory T cell (Treg) numbers decreased (Figure 3A-D). These effects could be reversed by rIL-5. The mRNA of the characteristic Th1 and Th17 cytokines, such as IFN- $\gamma$ , TBX21, IL-18, ROR $\gamma$ T, IL-17, and IL-23, showed a similar trend as the Th1 and Th17 cells, respectively (Figure 3E).



**Figure 1.** Expression and source of IL-5 in human coronary tissue. A The IL-5 levels in the coronary plaque of CAD patients and deceased donors were measured by western blotting. B. The IL-5 mRNA levels in these 2 groups were measured by RT-qPCR. C, D. The source of IL-5 was analyzed by double immunofluorescence staining in coronary tissue (400 ×). CAD, coronary artery disease; CD, cluster of differentiation; GAPDH, glyceraldehyde-3-phosphate dehydrogenase; IL, interleukin; RT-qPCR, reverse transcription-quantitative polymerase chain reaction. \*  $P < .05$ .

## DISCUSSION

In the present study, we found for the first time that IL-5 was decreased in the coronary plaque of CAD patients and that macrophages were the main source of IL-5. In addition, plasma IL-5 levels were negatively correlated with the presence and severity of CAD, and rIL-5 treatment significantly inhibited Th1 and Th17 differentiation *in vitro*.

Previous studies found a negative correlation between IL-5 and the presence of cardiovascular diseases. Ishigami et al.<sup>7</sup> reported that anti-IL-5 antibodies were positively associated with the development of atherosclerosis. IL-5 was also decreased in the patients with chronic heart failure, and decreased IL-5 levels were related to disease progression.<sup>17</sup> In Kawasaki disease, IL-5 levels were negatively correlated with the occurrence of coronary artery lesions.<sup>26</sup> However, IL-5 expression in CAD remains unknown; therefore, we measured IL-5 expression in the plasma and coronary plaques from CAD patients, and the results showed that IL-5 levels were significantly decreased. In addition, the results of the Gensini score showed that IL-5 levels were negatively associated with the extent of coronary stenosis.

Macrophages play a key role in the initiation and propagation of a variety of cardiovascular diseases, such as atherosclerosis,<sup>27</sup> hypertensive heart disease,<sup>28</sup> and heart failure.<sup>29,30</sup> Macrophages are closely related to CAD; objective evidence is that abundant macrophages were seen from ruptured plaque.<sup>31</sup> It has also been found that monocyte/macrophage-derived foam cells take up modified forms of LDL, thus contributing to atherogenesis.<sup>32</sup> Th cells were associated with atherosclerosis, and IL-5 has also been reported to be derived from Th2 cells.<sup>7,33</sup> Therefore, we further investigated the source of IL-5 in human coronary lesion tissue by performing double immunofluorescence staining with anti-CD68, anti-CD4, and anti-IL-5 antibodies. The results showed that both

the macrophages and Th cells were the source of IL-5 in human coronary plaques and that IL-5 was mainly expressed in macrophages.

IL-17 and IFN- $\gamma$ , the functional cytokines of Th1 and Th17, respectively, are the key factors in the chronic vascular inflammation typical of atherosclerosis.<sup>5,34,35</sup> Macrophage-specific overexpression of IL-5 can also attenuate atherosclerosis induced by high fat food in LDL receptor-deficient mice,<sup>36,37</sup> and an inverse association has been found between plasma IL-5 levels and carotid intima-media thickness.<sup>38</sup> Considering the anti-inflammatory role of IL-5 and the critical role of Th1/IFN- $\gamma$  and Th17/IL-17 on the progression of atherosclerosis/CAD, we also measured plasma IL-17 and IFN- $\gamma$  concentrations, and the results showed that both IL-17 and IFN- $\gamma$  were increased in CAD patients and were positively correlated with the Gensini score. However, Spearman's correlation analysis showed that IL-5 levels were negatively associated with IL-17 and IFN- $\gamma$ . Additionally, binary linear regression showed that IL-5 was negatively correlated with the presence of CAD. These data suggest that IL-5 may participate in CAD by regulating the secretion of inflammatory cytokines, such as IFN- $\gamma$  and IL-17.

Rupture of atherosclerotic plaque is the pathological basis of most vascular complications, such as cerebral infarction and myocardial infarction. The stabilization of plaque is mostly determined by plaque composition.<sup>39</sup> Stable plaques are mainly calcified and are more prone to rupture and fall off, while unstable plaques are mostly noncalcified. More and more inflammatory cells, such as CD3<sup>+</sup>T cells and CD68<sup>+</sup> macrophages, are recruited to the plaques and induce apoptosis of vascular smooth muscle cells, increasing plaque volume and the incidence of positive remodeling, finally resulting in the formation of vulnerable plaques.<sup>40,41</sup> IL-5 has been proven to play atheroprotective roles in atherosclerosis, to promote the differentiation of B-1 cells to secrete more

**Table 3**  
Clinical characteristics of patients providing blood samples

Characteristic	NCAD group	SAP group	UAP group	AMI group
Sex, M/F	20/16	29/22	31/13	20/9
Age, y	63 [53-71.25]	62 [53.5-70.5]	64 [58-73]	68 [57-74]
Smoking <sup>a</sup>	6 (16.7)	16 (31.4)	15 (34.1)	8 (27.6)
Drinking <sup>b</sup>	2 (5.6)	9 (17.6)	10 (22.7)	3 (10.3)
Killip class I/II/III/IV	—	—	—	22/5/2/0
Diabetes	4 (11.1)	17 (33.3)	11 (25.0)	12 (41.4)
Hyperlipidemia	14 (38.9)	20 (39.2)	18 (40.9)	13 (44.8)
Hypertension	15 (41.7)	35 (68.6)	33 (75.0)	23 (79.3)
Glu, (mmol/L)	5.06 [4.52-5.40]	5.29 [4.91-6.36] <sup>c</sup>	5.54 [4.95-6.86] <sup>c</sup>	6.16 [5.03-7.87] <sup>c,d</sup>
TG, mmol/L	1.38 [1.18-1.82]	1.64 [1.01-2.42]	1.28 [0.93-2.01]	1.44 [1.04-2.47]
TC, mmol/L	3.59 [3.18-4.34]	3.50 [4.17-5.14] <sup>c</sup>	4.40 [3.76-5.13] <sup>c</sup>	4.78 [3.83-5.44] <sup>c</sup>
HDL, mmol/L	1.06 [0.87-1.28]	1.01 [0.88-1.26]	1.00 [0.90-1.23]	0.90 [0.75-1.15]
LDL, mmol/L	1.85 [1.36-2.19]	2.13 [1.72-2.90] <sup>c</sup>	2.21 [1.52-2.59] <sup>c</sup>	2.48 [1.81-3.21] <sup>c</sup>
SBP, mmHg	136 [113-154]	135 [120-149] <sup>c</sup>	144 [125.75-158.50] <sup>c,d</sup>	151 [138-162.5] <sup>c,d,e</sup>
DBP, mmHg	80 [71-87.5]	82 [74-90]	81 [73.25-89.75]	90 [84-95] <sup>c</sup>
CRP, mg/L	0.83 [0.28-1.89]	1.95 [0.32-9.14] <sup>c</sup>	2.57 [0.55-11.32] <sup>c</sup>	3.66 [0.51-16.98] <sup>c</sup>
cTnI, ng/mL	0.038 [0.006-0.087]	0.426 [0.009-3.320] <sup>c</sup>	2.32 [0.055-13.150] <sup>c,d</sup>	20.75 [13.277-26.905] <sup>c,d,e</sup>
<b>Medication</b>				
Oral ypoglycemics	3 (8.3)	8 (15.7)	10 (22.7)	9 (32.1)
Insulin	2 (5.6)	5 (9.8)	4 (9.1)	4 (14.3)
Aspirin	10 (27.8)	18 (35.3)	16 (36.4)	12 (41.4)
Clopidogrel	0 (0)	10 (19.6)	9 (20.5)	7 (24.1)
Ticagrelor	0 (0)	0 (0)	7 (15.9)	8 (27.6)
Nitrates	13 (36.1)	32 (62.7)	29 (65.9)	10 (34.5)
Statin	11 (30.6)	16 (31.4)	13 (29.5)	11 (37.9)
ACEI/ARB	12 (33.3)	20 (39.2)	14 (31.8)	12 (42.9)
Beta-blockers	9 (25.0)	17 (33.3)	15 (34.1)	10 (34.5)
CCB	8 (22.2)	19 (37.3)	18 (40.9)	11 (37.9)
Diuretic	2 (5.6)	2 (3.9)	3 (6.8)	2 (7.1)

ACEI, angiotensin-converting enzyme inhibitor; AMI, acute myocardial infarction; ARB, angiotensin receptor blocker; CCB, calcium channel blocker; CRP, C-reactive protein; cTnI, cardiac troponin I; DBP, diastolic blood pressure; Glu, fasting glucose; F, female; HDL, high-density lipoprotein; LDL, low-density lipoprotein; M, male; NCAD, non-coronary artery disease; SAP, stable angina pectoris; SBP, systolic blood pressure; TC, total cholesterol; TG, total triglycerides; UAP, unstable angina pectoris. Data are expressed as proportions, No. (%), or median [interquartile range].

<sup>a</sup> At least 1 cigarette per day for more than 6 months.

<sup>b</sup> Any type of alcoholic beverage at least once a week for more than 6 months.

<sup>c</sup>  $P < .05$  vs NCAD group.

<sup>d</sup>  $P < .05$  vs SAP group.

<sup>e</sup>  $P < .05$  vs UAP group.

T15/E06 antibody, which can block oxidized low-density lipoprotein uptake by macrophages and reduce the formation of foam cells.<sup>42</sup> In this study, we found plasma IL-5 levels were lower in acute coronary syndrome patients than in patients with stable angina pectoris. This indicates that IL-5 was also related to the stabilization of coronary lesion plaques.

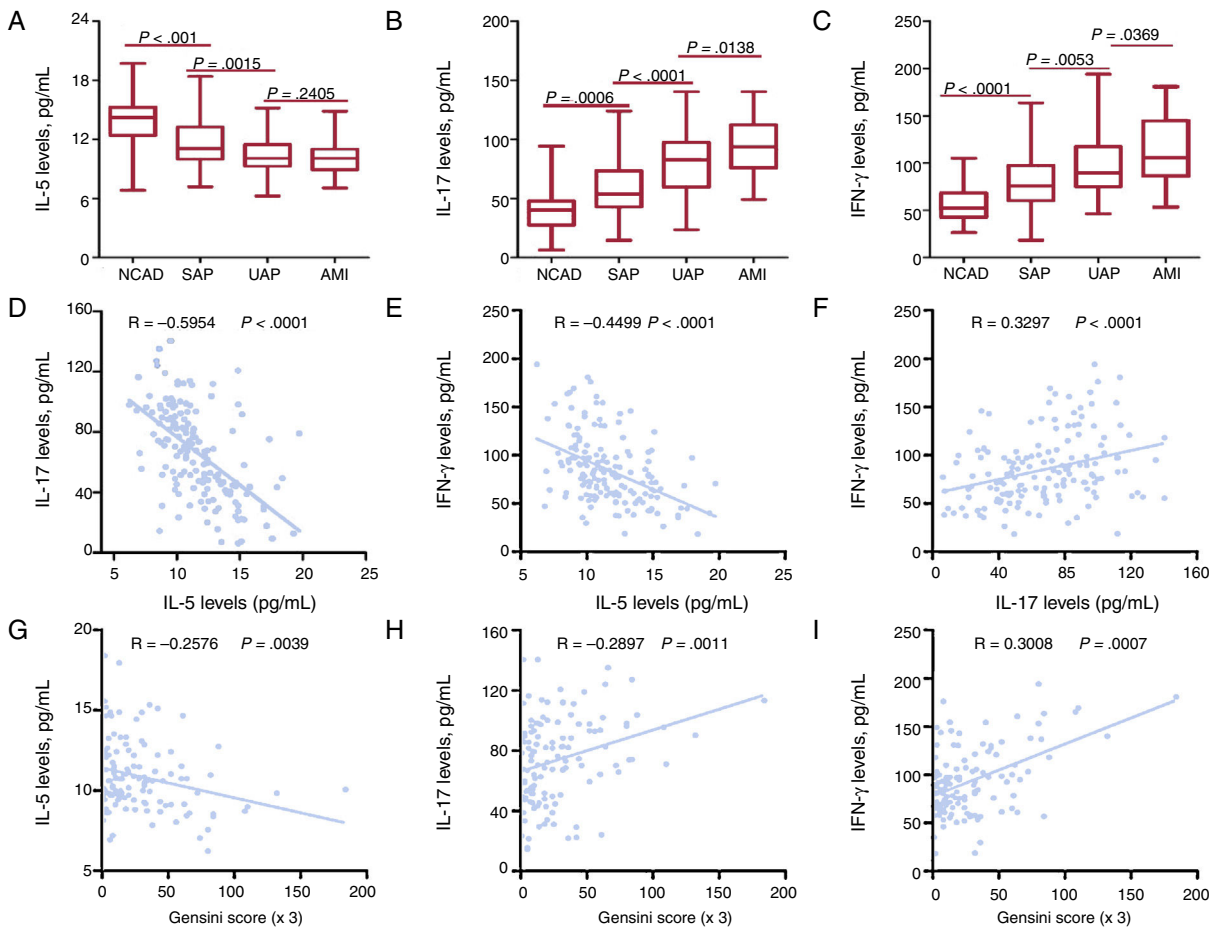
Previous studies showed that a changed ratio of Th1/Th2 lymphocytes is correlated with the development of atherosclerosis/CAD.<sup>43,44</sup> Forkhead box P3 + Tregs are the key players in maintaining immune homeostasis by responding to environmental cues to permit or suppress inflammation.<sup>45</sup> In addition, both Th1/Treg and Th17/Treg levels are elevated in CAD patients and animal atherosclerosis models.<sup>45,46</sup> These pieces of evidence demonstrated that Th1/Th2 and Th17/Treg imbalance plays a critical role in the development of atherosclerosis/CAD.

Considering the leading role of Th1, Th17 and Treg, and to further explore the mechanisms of IL-5 participating in

atherosclerosis/CAD, we investigated the effect of IL-5 on Th1, Th17 and Treg differentiation in vitro. The results showed that rIL-5 treatment inhibited Th1 and Th17 differentiation, as well as the mRNA levels of their related cytokine. These data suggest that IL-5 plays a protective role in the atherosclerosis environment.

### Study limitations

First, an animal experimental model of ischemic heart disease or infarction is needed to show the deleterious effect of IL-5KO or the beneficial effect of IL-5 stimulation in vivo. Second, our sample size is insufficient, and more patients are needed to validate our results. Third, the study participants enrolled from the hospital may have caused selection bias because inpatients are generally considered to have a more severe disease state. Finally, there was a lack of follow-up visits for CAD patients.

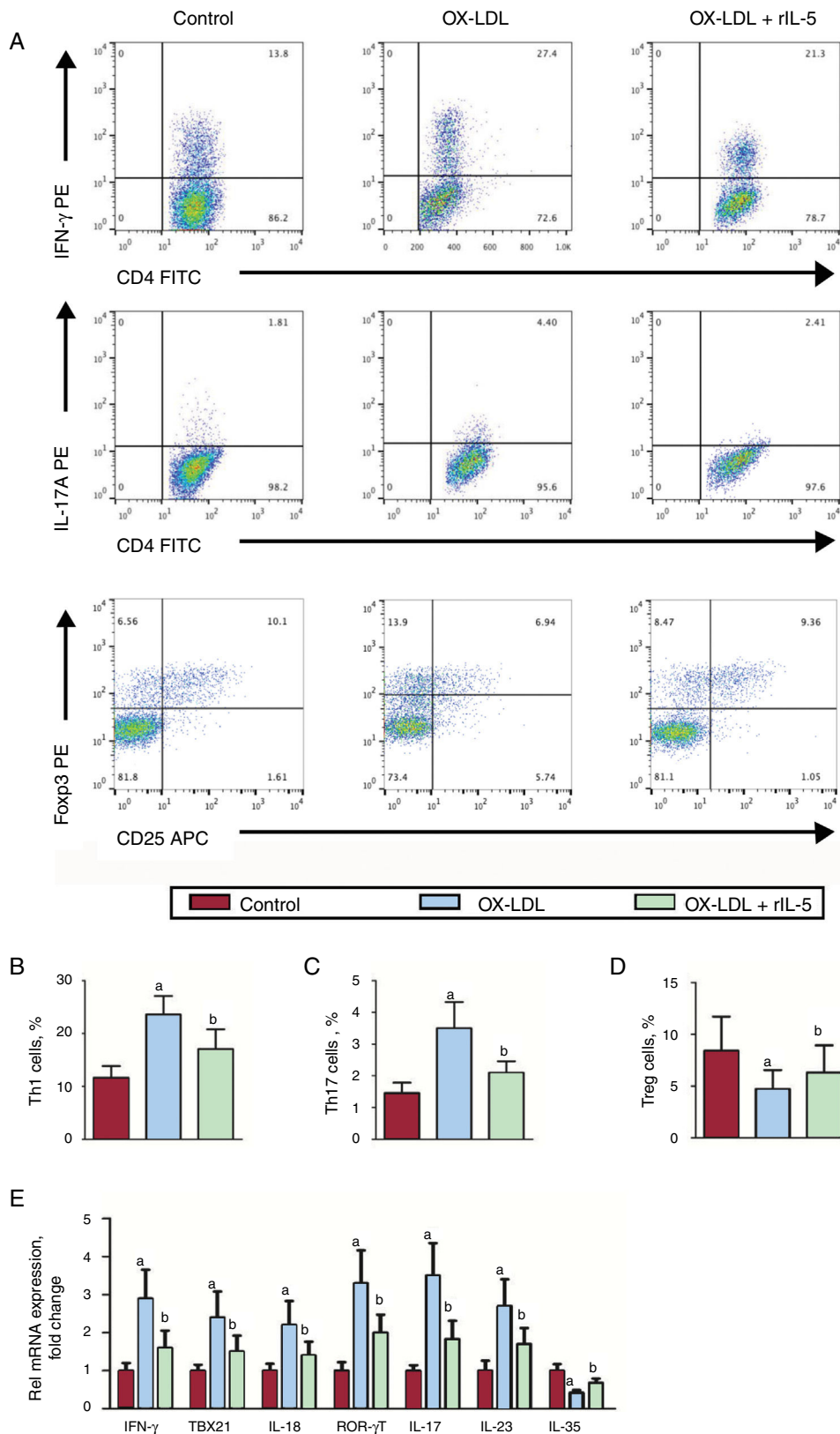


**Figure 2.** Cytokines in CAD patients. Plasma IL-5 (A), IL-17 (B), and IFN- $\gamma$  (C) concentrations in the NCAD and CAD groups. Correlations between IL-5 (D), IL-17 (E) and IFN- $\gamma$  levels (F). Correlations between Gensini Score and plasma IL-5 (G), IL-17 (H) and IFN- $\gamma$  (I) levels. AMI, acute myocardial infarction; CAD, coronary artery disease; IFN- $\gamma$ , interferon- $\gamma$ ; IL, interleukin; NCAD, non-CAD; SAP, stable angina pectoris; UAP, unstable angina pectoris.

**Table 4**  
Variables associated with the presence of coronary artery disease

Variables	Simple linear			Binary linear		
	$\beta$	95%CI	P	$\beta$	95%CI	P
IL-5	-0.528	-0.662 to -0.395	.000	-0.273	-0.455 to -0.091	.003
IL-17	0.470	0.331 to 0.609	.000	0.228	0.068 to 0.388	.006
IFN- $\gamma$	0.445	0.305 to 0.586	.000	0.232	0.081 to 0.382	.003
cTnI	0.300	0.150 to 0.450	.000	0.017	-0.132 to 0.166	.822
TC	0.286	0.136 to 0.437	.000	0.000	-0.147 to 0.146	.998
LDL	0.265	0.113 to 0.416	.001	0.047	-0.094 to 0.189	.510
Glu	0.250	0.036 to 0.402	.021	0.001	-0.143 to 0.145	.992
Sex	0.077	-0.079 to 0.234	.331			
Age	0.118	-0.038 to 0.274	.137			
Smoking	0.137	-0.018 to 0.293	.083			
Drinking	0.075	-0.082 to 0.232	.346			
TG	0.049	-0.108 to 0.206	.535			
CRP	0.141	-0.015 to 0.296	.076			

95%CI, 95% confidence interval; IL, interleukin; IFN- $\gamma$ , interferon- $\gamma$ ; CRP, C-reactive protein; cTnI, cardiac troponin I; Glu, fasting glucose; LDL, low-density lipoprotein; TC, total cholesterol; TG, total triglycerides.



**Figure 3.** Effect of IL-5 on Th1, Th17 and Treg differentiation in vitro. (A). Th1 and Th17 cells were identified among CD4<sup>+</sup>Th cells based on their expression of CD4<sup>+</sup>IFN- $\gamma$ <sup>+</sup> and CD4<sup>+</sup>IL-17<sup>+</sup>, respectively. The Th1 (B), Th17 (C) and Treg (D) levels in control, OX-LDL and OX-LDL + rIL-5 groups. (E). The IFN- $\gamma$ , TBX21, IL-18, ROR- $\gamma$ T, IL-17, IL-23 and IL-35 mRNA levels in the 3 groups were measured by RT-qPCR. CD, cluster of differentiation; IFN- $\gamma$ , interferon- $\gamma$ ; IL, interleukin; OX-LDL, oxidized low-density lipoprotein; PE, phycoerythrin; rIL-5, recombinant mouse IL-5; RoR $\gamma$ , retinoic acid receptor-related orphan receptor gamma; RT-qPCR, reverse transcription-quantitative polymerase chain reaction; TBX, T-box transcription factor; Th, T helper cells; Treg, regulatory T cell. <sup>a</sup>*P* < .05 vs control group. <sup>b</sup>*P* < .05 vs OX-LDL group.



## CONCLUSIONS

This study is the first to demonstrate a strong negative association between CAD and plasma IL-5 levels. The possible mechanism is that IL-5 attenuates atherosclerosis/CAD by inhibiting inflammation. In summary, we found that IL-5 is negatively associated with the presence of CAD, and inhibits Th1 and Th17 differentiation in vitro.

## CONFLICTS OF INTEREST

None declared.

## WHAT IS KNOWN ABOUT THE TOPIC?

- Although there are many methods to help diagnose CAD, specific plasma markers are still needed for low-risk patients and convenience, especially for patients unable to undergo coronary angiography. The association between IL-5 levels and CAD remains unclear.

## WHAT DOES THIS STUDY ADD?

- In patients with an established diagnosis of CAD, we found that plasma IL-5 levels were decreased and IL-5 was negatively associated with proinflammatory cytokines.
- Recombinant IL-5 inhibited oxidized low-density lipoprotein-induced Th1 and Th17 differentiation in vitro.
- Inflammation is associated with the development of atherosclerosis/CAD, and Th1 and Th17 have been proven to be 2 important immune cells that promote the development of atherosclerosis/CAD. In our study, IL-5 inhibited oxidized low-density lipoprotein-induced Th1 and Th17 differentiation. This suggests that the occurrence of atherosclerosis/CAD may be related to an inability to effectively inhibit Th1 and Th17 differentiation caused by IL-5 deficiency, thus amplifying inflammation. IL-5 will definitely be helpful for the prevention and treatment of atherosclerosis/CAD in clinical practice.

## REFERENCES

1. Khera AV, Kathiresan S. Genetics of coronary artery disease: discovery, biology and clinical translation. *Nat Rev Genet.* 2017;18:331–344.
2. Li Q, Kuang Y, Qiu J, Zhang X, Ruan Y, Li Z. The correlation between plasma tissue factor and interleukin 18 and their significance in patients with acute coronary syndrome. *Cardiovasc Toxicol.* 2015;15:276–282.
3. Kamari Y, Shaish A, Shemesh S, et al. Reduced atherosclerosis and inflammatory cytokines in apolipoprotein-E-deficient mice lacking bone marrow-derived interleukin-1 alpha. *Biochem Biophys Res Commun.* 2011;405:197–203.
4. Simon TG, Trejo M, McClelland R, et al. Circulating Interleukin-6 is a biomarker for coronary atherosclerosis in nonalcoholic fatty liver disease: Results from the Multi-Ethnic Study of Atherosclerosis. *Int J Cardiol.* 2018;259:198–204.
5. Whitman SC, Ravisankar P, Daugherty A. Interleukin-18 enhances atherosclerosis in apolipoprotein E(-/-) mice through release of interferon-gamma. *Circ Res.* 2002;90:E34–E38.
6. Mallat Z, Besnard S, Duriez M, et al. Protective role of interleukin-10 in atherosclerosis. *Circ Res.* 1999;85:e17–e24.
7. Ishigami T, Abe K, Aoki I, et al. Anti-interleukin-5 and multiple autoantibodies are associated with human atherosclerotic diseases and serum interleukin-5 levels. *FASEB J.* 2013;27:3437–3445.
8. Xu J, Ehrman B, Graham LM, Eagleton MJ. Interleukin-5 is a potential mediator of angiotensin II-induced aneurysm formation in apolipoprotein E knockout mice. *J Surg Res.* 2012;178:512–518.
9. Umemoto S, Suzuki N, Fujii K, et al. Eosinophil counts and plasma fibrinogen in patients with vasospastic angina pectoris. *Am J Cardiol.* 2000;85:715–719.
10. Nadimi AE, Ahmadi J, Mehrabian M. Peripheral eosinophil count and allergy in patients with coronary artery disease. *Acta Med Indones.* 2008;40:74–77.
11. Takatsu K, Kouro T, Nagai Y. Interleukin 5 in the link between the innate and acquired immune response. *Adv Immunol.* 2009;101:191–236.
12. Zhang G, Rowe J, Kusel M, et al. Interleukin-10/interleukin-5 responses at birth predict risk for respiratory infections in children with atopic family history. *Am J Respir Crit Care Med.* 2009;179:205–211.
13. Hall LR, Mehlotra RK, Higgins AW, Haxhim MA, Pearlman E. An essential role for interleukin-5 and eosinophils in helminth-induced airway hyperresponsiveness. *Infect Immun.* 1998;66:4425–4430.
14. Zaynagetdinov R, Sherrill TP, Gleaves LA, et al. Interleukin-5 Facilitates Lung Metastasis by Modulating the Immune Microenvironment. *Cancer Res.* 2015;75:1624–1634.
15. Akilimali NA, Chang CC, Muema DM, et al. Plasma But Not Cerebrospinal Fluid Interleukin 7 and Interleukin 5 Levels Pre-Antiretroviral Therapy Commencement Predict Cryptococcosis-Associated Immune Reconstitution Inflammatory Syndrome. *Clin Infect Dis.* 2017;65:1551–1559.
16. Liu CL, Wang Y, Liao M, et al. Allergic Lung Inflammation Aggravates Angiotensin II-Induced Abdominal Aortic Aneurysms in Mice. *Arterioscler Thromb Vasc Biol.* 2016;36:69–77.
17. Cappuzzello C, Di Vito L, Melchionna R, et al. Increase of plasma IL-9 and decrease of plasma IL-5, IL-7, and IFN-gamma in patients with chronic heart failure. *J Transl Med.* 2011;9:28.
18. Lasser EC, Berry C, Kortman K. Diminished atherosclerotic arterial calcifications in asthma. A possible role for elevated endogenous heparin-like material. *Allergy.* 1987;42:549–552.
19. Lin Y, Huang Y, Lu Z, et al. Decreased Plasma IL-35 Levels Are Related to the Left Ventricular Ejection Fraction in Coronary Artery Diseases. *PLoS One.* 2012;7:e5249012.
20. Inoue T, Komoda H, Nonaka M, Kameda M, Uchida T, Node K. Interleukin-8 as an independent predictor of long-term clinical outcome in patients with coronary artery disease. *Int J Cardiol.* 2008;124:319–325.
21. Schlitt A, Blankenberg S, Yan D, et al. Further evaluation of plasma sphingomyelin levels as a risk factor for coronary artery disease. *Nutr Metab (Lond).* 2006;3:5.
22. Ye J, Wang M, Xu Y, et al. Sestrins increase in patients with coronary artery disease and associate with the severity of coronary stenosis. *Clin Chim Acta.* 2017;472:51–57.
23. Li Y, Zhang C, Wu Y, et al. Interleukin-12p35 deletion promotes CD4 T-cell-dependent macrophage differentiation and enhances angiotensin II-induced cardiac fibrosis. *Arterioscler Thromb Vasc Biol.* 2012;32:1662–1674.
24. Yin L, Wu X, Gong Y, et al. OX-LDL up-regulates the vascular endothelial growth factor-to-pigment epithelium-derived factor ratio in human retinal pigment epithelial cells. *Curr Eye Res.* 2011;36:379–385.
25. Ohmatsu H, Humme D, Gonzalez J, et al. IL-32 induces indoleamine 2,3-dioxygenase<sup>CD1c</sup> dendritic cells and indoleamine 2,3-dioxygenase<sup>CD163</sup> macrophages: Relevance to mycosis fungoides progression. *Oncoimmunology.* 2017;6:e1181237.
26. Kuo H, Wang C, Liang CD, et al. Association of lower eosinophil-related T helper 2 (Th2) cytokines with coronary artery lesions in Kawasaki disease. *Pediatr Allergy Immunol.* 2009;20:266–272.
27. Collot-Teixeira S, Martin J, McDennott-Roe C, Poston R, McGregor JL. CD36 and macrophages in atherosclerosis. *Cardiovasc Res.* 2007;75:468–477.
28. Kain D, Amit U, Yagil C, et al. Macrophages dictate the progression and manifestation of hypertensive heart disease. *Int J Cardiol.* 2016;203:381–395.
29. Sager HB, Hulsmans M, Lavine KJ, et al. Proliferation and Recruitment Contribute to Myocardial Macrophage Expansion in Chronic Heart Failure. *Circ Res.* 2016;119:853–864.
30. Fujii K, Shibata M, Nakayama Y, et al. A heart-brain-kidney network controls adaptation to cardiac stress through tissue macrophage activation. *Nat Med.* 2017;23:611–622.
31. Amaki T, Suzuki T, Nakamura F, et al. Circulating malondialdehyde modified LDL is a biochemical risk marker for coronary artery disease. *Heart.* 2004;90:1211–1213.
32. Yamada Y, Doi T, Hamakubo T, Kodama T. Scavenger receptor family proteins: roles for atherosclerosis, host defence and disorders of the central nervous system. *Cell Mol Life Sci.* 1998;54:628–640.
33. Taleb S. Inflammation in atherosclerosis. *Arch Cardiovasc Dis.* 2016;109:708–715.
34. Taleb S, Tedgui A, Mallat Z. IL-17 and Th17 cells in atherosclerosis: subtle and contextual roles. *Arterioscler Thromb Vasc Biol.* 2015;35:258–264.
35. Eid RE, Rao DA, Zhou J, et al. Interleukin-17 and interferon-gamma are produced concomitantly by human coronary artery-infiltrating T cells and act synergistically on vascular smooth muscle cells. *Circulation.* 2009;119:1424–1432.
36. Chen Y, Duan Y, Kang Y, et al. Activation of Liver X Receptor Induces Macrophage Interleukin-5 Expression. *J Biol Chem.* 2012;287:43340–43350.
37. Zhao W, Lei T, Li H, et al. Macrophage-specific overexpression of interleukin-5 attenuates atherosclerosis in LDL receptor-deficient mice. *Gene Ther.* 2015;22:645–652.
38. Sämpi M, Ukkola O, Päivänsalo M, Kesäniemi YA, Binder CJ, Hörkö S. Plasma Interleukin-5 Levels Are Related to Antibodies Binding to Oxidized Low-Density Lipoprotein and to Decreased Subclinical Atherosclerosis. *J Am Coll Cardiol.* 2008;52:1370–1378.

39. Oka T, Yamamoto H, Ohashi N, et al. Association between epicardial adipose tissue volume and characteristics of non-calcified plaques assessed by coronary computed tomographic angiography. *Int J Cardiol.* 2012;161:45–49.
40. Geng YJ, Henderson LE, Levesque EB, Muszynski M, Libby P. Fas is expressed in human atherosclerotic intima and promotes apoptosis of cytokine-primed human vascular smooth muscle cells. *Arterioscler Thromb Vasc Biol.* 1997;17:2200–2208.
41. Burke AP, Kolodgie FD, Farb A, Weber D, Virmani R. Morphological predictors of arterial remodeling in coronary atherosclerosis. *Circulation.* 2002;105:297–303.
42. Li X, Cao X, Zhang X, et al. MEK1/2 inhibitors induce interleukin-5 expression in mouse macrophages and lymphocytes. *Biochem Biophys Res Commun.* 2016;473:939–946.
43. Cheng X, Chen Y, Xie JJ, et al. Suppressive oligodeoxynucleotides inhibit atherosclerosis in ApoE(-/-) mice through modulation of Th1/Th2 balance. *J Mol Cell Cardiol.* 2008;45:168–175.
44. Xie JJ, Wang J, Tang TT, et al. The Th17/Treg functional imbalance during atherogenesis in ApoE(-/-) mice. *Cytokine.* 2010;49:185–193.
45. Butcher MJ, Filipowicz AR, Waseem TC, et al. Atherosclerosis-Driven Treg Plasticity Results in Formation of a Dysfunctional Subset of Plastic IFN $\gamma$  + Th1/Tregs. *Circ Res.* 2016;119:1190–1203.
46. Cheng X, Yu X, Ding YJ, et al. The Th17/Treg imbalance in patients with acute coronary syndrome. *Clin Immunol.* 2008;127:89–97.