

tion of SCBs, HV prolongation is > 100 ms or if second or third degree infranodal AVB occurs,^{3,5} as was the case in our patient.

It has been demonstrated that SCBs can be safely used in pharmacological challenge tests, although they might trigger ventricular arrhythmias or transient AVB, particularly in patients with prior atrioventricular or intraventricular conduction abnormalities.^{5,6} To prevent the onset of AVB, most authors recommend terminating pharmacological challenge when QRS widening $> 30\%$ is observed.⁶ To date, the conduction abnormalities described resulting from use of group Ic antiarrhythmic agents (flecainide, propafenone) have been transient, with a maximum duration in line with the half-life of the drug (≈ 6 hours in the case of flecainide, but possibly as long as 58 hours in patients with chronic kidney disease).

In the case presented here, it is notable that AVB occurred during the flecainide test with no prior QRS widening despite being infranodal (indicating that AVB in this case was probably intrahisian). Also of note is that AVB was permanent and not transient, as reported in previous literature, with the need for a permanent pacemaker.

In short, we believe that flecainide unmasked a disorder in the His-Purkinje system as the cause of the syncope. This case, therefore, highlights the question of whether a pharmacological challenge test with SCBs should be performed in cases of syncope of unknown cause with prolonged QRS but < 120 ms (incomplete block of the left or right branch, hemiblocks) to uncover abnormalities of His-Purkinje conduction as the cause of syncope.

Raquel Luna-López, Tomás Datino,* María Ángeles Espinosa, Francisco Fernández-Avilés, and Ángel Arenal

Servicio de Cardiología, Hospital General Universitario Gregorio Marañón, Instituto de Investigación Sanitaria del Hospital General Universitario Gregorio Marañón, CIBERCV, Universidad Complutense de Madrid, Madrid, Spain

*Corresponding author:

E-mail address: tomas.datino@gmail.com (T. Datino).

Available online 17 October 2019

REFERENCES

1. Brignole M, Moya A, de Lange FJ, et al. 2018 ESC Guidelines for the diagnosis and management of syncope. *Eur Heart J*. 2018;39:1883–1948.
2. Somani R, Krahn AD, Healey JS, et al. Procainamide infusion in the evaluation of unexplained cardiac arrest: From the Cardiac Arrest Survivors with Preserved Ejection Fraction Registry (CASPER). *Heart Rhythm*. 2014;11:1047–1054.
3. Tonkin AM, Heddle WF, Tornos P. Procainamide administration during electrophysiology study—utility as a provocative test for intermittent atrioventricular block. *Aust N Z J Med*. 1978;8:594–602.
4. Martí-Almor J, Cladellas M, Bazán V, et al. Nuevos predictores de evolución a bloqueo auriculoventricular en pacientes con bloqueo bifascicular. *Rev Esp Cardiol*. 2010;63:400–408.
5. Roca-Luque I, Francisco-Pasqual J, Oristrell G, et al. Flecainide versus procainamide in electrophysiological study in patients with syncope and wide QRS duration. *JACC Clin Electrophysiol*. 2019;5:212–219.
6. Rolf S, Bruns HJ, Wichter T, et al. The ajmaline challenge in Brugada syndrome: Diagnostic impact, safety, and recommended protocol. *Eur Heart J*. 2003;24:1104–1112.

<https://doi.org/10.1016/j.rec.2019.06.016>
1885-5857/

© 2019 Sociedad Española de Cardiología. Published by Elsevier España, S.L.U. All rights reserved.

Sheathless transaxillary transcatheter aortic valve implantation using the Portico valve system. Initial experience of a real-world “Heart Team”



Implante sin introductor de válvula Portico por acceso transaxilar. Experiencia inicial de un «equipo multidisciplinario» real

Transcatheter aortic valve implantation (TAVI) is indicated in

patients with severe aortic stenosis with an intermediate or high surgical risk or who are deemed inoperable.^{1,2} Transfemoral access is the most common route, but is not always possible if the patient has peripheral vascular disease. Alternative routes have been proposed, not always with good associated outcomes.³ With transaxillary access, there is a shorter distance from the puncture of the aortic annulus, which potentially enhances control during implantation. The left axillary artery is used more often because it allows better coaxial alignment of the device and the aortic annulus, but it is more fragile than the common femoral artery and is noncompressible. The possibility of performing TAVI with a highly-flexible valve that can be advanced in tortuous arteries, such as the Portico (Abbott Vascular; Santa Clara, California, USA), with a sheathless introduction⁴ and therefore reduced diameter, could reduce vascular complications and allow its use in smaller arteries.

The clinical guidelines¹ advocate a multidisciplinary Heart Team, although in reality the roles of the cardiac surgeon (CS) and interventional cardiologist (IC) vary, depending on the hospital.

The aim of our study was to describe our experience with the Portico self-expanding valve implanted using a sheathless technique via a transaxillary route, in which both the CS and the IC actively participated in decision-making before and during implantation.

We carried out a retrospective study with clinical follow-up. The primary objectives were the success of the intervention and the complication rate.

The study was conducted between March 2017 and December 2018. It included 29 patients with severe aortic stenosis who were being considered for TAVI but who had inadequate transfemoral access due to vessel diameter < 6 –6.5 mm, calcification, or severe tortuosity, but feasible transaxillary access (vessel diameter > 5 mm, absence of calcification and arterial tortuosity and an angle between the subclavian artery and the aorta of $\geq 60^\circ$). The procedure was conducted in a fully equipped operating room with 2 CSs and 2 ICs present. Under general anesthetic, a 4–6 cm incision was made below and parallel to the left clavicle. The pectoralis major was dissected in the direction of its fibers, the clavipectoral fascia was opened and the pectoralis minor was exposed and retracted laterally. Taking special care of the brachial plexus, surgical cut-down exposed the axillary artery (figure 1A), which was sutured with a purse-string suture (figure 1B). The artery was

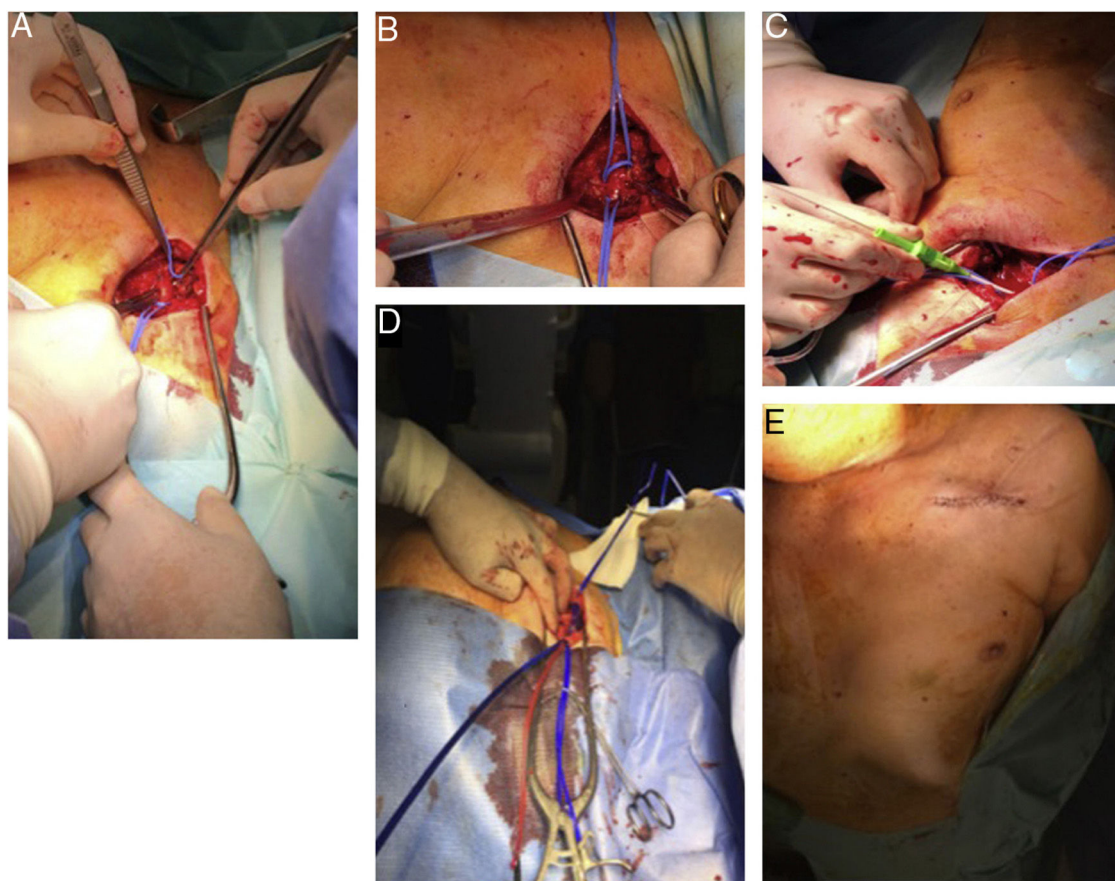


Figure 1. A: cut-down to expose the right axillary artery. B: purse-string suture of the axillary artery. C: 6-Fr sheath in the axillary artery after puncture. D: Portico valve in the axillary artery delivered without a sheath, using an extra support guidewire. E: closure of the surgical wound.

punctured distal to the suture edge, and a 6-Fr sheath was introduced (figure 1C). An AL-1 diagnostic catheter was then advanced across the aortic valve, and a Safari extra support guidewire was introduced. The 6-Fr sheath was changed to a 14-Fr sheath. Aortic valvuloplasty was performed in indicated cases, the sheath was removed, and the Portico valve was introduced directly without a sheath over the Safari guidewire (figure 1D). Valve implantation was performed according to standard procedures. If postdilatation was required, the delivery system was changed for the 14-Fr sheath. When the valve had been implanted, and after ensuring hemostasis, the surgical wound was closed (figure 1E).

The patients' characteristics at baseline and follow-up at 30 days are shown in table 1.

This is the largest series in the literature and describes our experience with TAVI using sheathless implantation of the Portico valve via transaxillary access, with the active participation of both CSs and ICs. A series on sheathless implantation of the Portico system via transfemoral access has been published,⁵ with outcomes similar to ours, but our patients were somewhat more complex, as they were not suitable for femoral access. Our data demonstrate that this is a safe procedure, with very few vascular complications, with only 1 case of arterial dissection without compromised flow and with conversion to transaortic access. This

is relevant because the patients in this series had an axillary artery diameter smaller than that recommended for the standard Portico technique (6 mm), and as the procedure was performed without a sheath, it was possible to implant the valve via smaller arteries (as small as 5 mm or even slightly less if there was no arterial calcification). For this procedure, a good study of the axillary artery, a good surgical technique and experience in the implantation of this valve are essential.

A series on fully percutaneous transaxillary access has also been published.⁶ This requires a very precise use of the closure devices and a protection guidewire; use of a surgical technique simplifies this. Stenting was still performed in a considerable number of cases (11%), with 2% requiring vascular reintervention that would be avoided or solved quickly with surgical access.

In conclusion, our series indicates that sheathless implantation of the self-expanding Portico valve is feasible and safe when there is a good previous study of the axillary artery and good surgical technique that reduces the risk of vascular complications. In addition, it allows the procedure to be performed in arteries of < 6 mm diameter, thus broadening the scope of the types of patients who may be offered this procedure. Furthermore, the presence of the CS during the procedure allows rapid action to be taken should any potentially fatal complications arise.

Table 1

Characteristics at baseline and 30-day follow-up

Patients, n	29
Age, y	82 ± 3.98
Male sex, %	37.9
Hypertension, %	100
Grade I-II/III-IV dyspnea, %	47.6/52.4
Diabetes mellitus, %	72.7
Hyperlipidemia, %	90.5
Chronic kidney disease, %	20.6
Obstructive pulmonary disease, %	13.6
Previous pacemaker, %	17.2
Valve-in-valve, %	10.3
Previous coronary disease, %	51.7
Previous stroke, %	10.3
Mean axillary artery diameter, mm	5.7 ± 0.63
Katz Index = 0, %	51.7
Society of Thoracic Surgeons Score	3.13 ± 1.62
EuroSCORE	15.45 ± 11.83
EuroSCORE II	3.61 ± 2.7
Follow-up at 30 days	
Death	0
Myocardial infarction	0
Minor stroke	0
Major stroke	1 (3.44)
Conversion to transaortic access	1 (3.44)
New pacemaker implant	4 (13.79)
Acute renal failure	4 (13.79)
Valve embolization	1 (3.44)
Minor vascular complication	1 (3.44)
Major vascular complication	0
Aortic paravalvular leak > grade II	1 (3.44)
Procedure success, %	100
Device success, %	97.1

CONFLICTS OF INTEREST

J.F. Díaz Fernández is a proctor for the Portico valve.

Rosa María Cardenal Piris,^{a,*} Omar Araji Tiliani,^b
José Francisco Díaz Fernández,^a Nuria Miranda Balbuena,^b
Antonio Gómez Menchero,^a and José Miguel Barquero Aroca^b

^aUnidad de Cardiología Intervencionista, Servicio de Cardiología,
Hospital Juan Ramón Jiménez, Huelva, Spain

^bServicio de Cirugía Cardiovascular, Hospital Universitario
Virgen Macarena, Sevilla, Spain

* Corresponding author:

E-mail address: rcpiris@gmail.com (R.M. Cardenal Piris).

Available online 4 November 2019

REFERENCES

- Baumgartner H, Falk V, Bax JJ, et al. 2017 ESC/EACTS Guidelines on the management of valvular heart disease. *Eur Heart J*. 2017;38:2739–2791.
- Pasala TKR, Ruiz CE. El TAVI como primera opción en la estenosis aórtica grave: ¿quimera o realidad? *Rev Esp Cardiol*. 2018;71:141–145.
- Chandrasekhar J, Hibbert B, Ruel M, Lam BK, Labinaz M, Glover C. Transfemoral vs non-transfemoral access for transcatheter aortic valve implantation: a systematic review and meta-analysis. *Can J Cardiol*. 2015;31:1427–1438.
- Bruschi G, Colombo P, Botta L, et al. Portico sheathless transcatheter aortic valve implantation via distal axillary artery. *Ann Thorac Surg*. 2017;103:e175–e177.
- Taramasso M, Denegri A, Kuwata S, et al. Feasibility and safety of transfemoral sheathless Portico aortic valve implantation: preliminary results in a single center experience. *Catheter Cardiovasc Interv*. 2018;91:533–539.
- Schäfer U, Deuschl F, Schofer N, et al. Safety and efficacy of the percutaneous transaxillary access for transcatheter aortic valve implantation using various transcatheter heart valves in 100 consecutive patients. *Int J Cardiol*. 2017;232:247–254.

<https://doi.org/10.1016/j.rec.2019.07.016>
1885-5857/

© 2019 Sociedad Española de Cardiología. Published by Elsevier España, S.L.U. All rights reserved.

A new mutation affecting the converter region of the beta-myosin heavy chain related to hypertrophic cardiomyopathy with poor prognosis



Nueva mutación de la región conversora de la cadena pesada de la beta-miosina relacionada con miocardiopatía hipertrófica de mal pronóstico

To the Editor,

Hypertrophic cardiomyopathy (HCM) is an autosomal dominant disorder and is the most common heritable cardiomyopathy.¹ Although several mutations have been related to HCM with poor prognosis, the prognostic value of specific mutations in HCM remains controversial. Genetic variants in the β -myosin heavy

chain encoded by *MYH7* involving the so-called “converter region” have been associated with early disease and higher rates of transplant and malignant arrhythmias.² The converter domain extends from Phe-709 to Arg-777 and is believed to be a key element of the actomyosin complex where elastic distortion occurs.

We describe a family with a previously undescribed genetic variant in the converter region in *MYH7* (c.2212A > C; p.Ser738Arg). The index case is a 42-year-old woman diagnosed with HCM when she was 24 years old and who was admitted to the cardiology ward due to heart failure. An echocardiogram showed severe biventricular systolic dysfunction. Although she received specific treatment for heart failure (table 1), at the age of 45 years she required a heart transplant.